

SOUTH DEVON

R E V I E W





CELEBRATING OUR 35TH YEAR BREEDING SOUTH DEVON CATTLE

Fullblood breeding
stock available
Private Treaty

Emphasis on
maternal traits

Utilization of
performance data
from the beginning

Capturing carcass
and ultrasound data
for 21 years



RANDY & SHARON CAMPBELL
(573) 782-3418 • (573) 694-0179 • rscampbell1984@gmail.com

Selling 20 TOP PERFORMING MJB SOUTH DEVON BULLS

At Midland – April 4, 2024 – Columbus, Montana



MJB PROGRESS 328L

Lot #822 • Reg. #222153 • Born: 3/15/23 • 5/8 DS 1/4 AN 1/8 SM
 Sire: NICHOLS PROGRESS DSJ038
 BW: 83 • Adj WW: 783 • WDA: 3.22 • ADG: 3.24
 BW: +2.2 • WW: +88 • YW: +138 • Milk: +18



MJB PROGRESS 399L

Lot #824 • Reg. #222155 • Born: 4/14/23 • 3/4 DS 1/4 AN
 Sire: NICHOLS PROGRESS DSJ038
 BW: 81 • Adj WW: 742 • WDA: 3.29 • ADG: 3.15
 BW: +1.2 • WW: +87 • YW: +134 • Milk: +20



MJB CAPTIVATED 341L

Lot #808 • Reg. #222141
 Born: 3/26/23 • 1/2 DS 1/4 AN 1/8 AR 1/8 XX
 Sire: NICHOLS UNTOUCHED DSG030
 BW: 90 • Adj WW: 698 • WDA: 3.12 • ADG: 3.02

| | | | |
|------|-----|-----|------|
| BW | WW | YW | Milk |
| -0.2 | +63 | +91 | +23 |



MJB LACROSSE 352L

Lot #817 • Reg. #222150
 Born: 3/30/23 • 3/4 DS 1/4 AN
 Sire: MJB NFL 953G
 BW: 92 • Adj WW: 767 • WDA: 3.27 • ADG: 3.33

| | | | |
|------|-----|------|------|
| BW | WW | YW | Milk |
| +2.2 | +79 | +123 | +18 |



MJB LACROSSE 419L

Lot #810 • Reg. #222143
 Born: 4/26/23 • 3/4 DS 1/8 AN 1/8 SA
 Sire: MJB NFL 953G
 BW: 73 • Adj WW: 722 • WDA: 3.1 • ADG: 2.97

| | | | |
|------|-----|------|------|
| BW | WW | YW | Milk |
| -0.1 | +69 | +109 | +20 |

They are sired by Nichols Progress SDJ038, one of the very top performing South Devon bulls ever.
 BW: 86 • Adj. WW: 894 • WW Ratio: 129 • Adj. YW: 1535 • BW: +2.7 • WW: +93 • YW: +147 • Milk +14

Selling by Private Treaty

Our Best Spring Cow Calf Pairs

We would like to sincerely thank all of our buyers, bidders & supporters over the past 40 plus years



www.MJBCattle.com

JIM AND MARY BROWN
 BOX 259
 LODGE GRASS, MONTANA 59050

JIM - (406) 679-0309 CELL
MATT - (406) 679-1796 CELL

Advertiser Directory

| | |
|--|------------------------|
| Bar/E Cattle Co..... | 30 |
| C/N Ranch..... | 49 |
| CS Livestock/Walnut Grove Farm..... | 42 |
| Dahl Land & Cattle LLP..... | 36 |
| Diamond Plus Cattle | 36 |
| DLCC Ranch..... | 10 & Inside back cover |
| DLCC Kooper 56K | 66 |
| Elkington Polled Herefords & South Devon | 42 |
| Gnech Farms..... | 30 |
| Hoxie Hill Farms | 30 |
| JVM Cattle Company | 36 |
| K&M Cattle | 63 |
| Midland Bull Test..... | 35 |
| MJB Ranch | 3 |
| NASDA Jr Association - Jr Nationals..... | 11 |
| Northern States South Devon Association | 49 |
| Nichols Farms..... | Back cover |
| Popken South Devon | 45 |
| Showboat Cattle Co./Showboat Media Co. | 49 |
| Triple Crown South Devons..... | Inside front cover |
| Valley Hill Farm | 34 |

Staff

Lynn Giess..... Editor
Sherry Doubet NASDA Registry

ON THE COVER: Jaxson Van Haur, Valier, MT

Editorial Design by Shannon Krueger, Allegro Creative LLC, Abilene, KS



@2024 North American South Devon Association. All rights reserved. Reproduction without permission from the North American South Devon Association is prohibited. The North American South Devon Association is not responsible for claims made by Advertisers in The South Devon Review. The North American South Devon Association is not responsible for unsolicited materials. Contributors are invited to submit photographs and manuscripts pertaining to South Devon cattle and their producers. Preference is given to material accompanied by photographs (300 dpi). All material and photographs are subject to editing and revisions.

Please send address changes to:
North American South Devon Association, PO Box 850, Big Horn, WY 82833.

Published annually by the North American South Devon Association dedicated to the promotion and improvement of breeding, feeding and marketing South Devon cattle.



12



16

| | |
|---------------------------------|----|
| From the President..... | 6 |
| 2024 Board of Directors | 7 |
| Committee Appointments..... | 7 |
| News & Notes | 8 |
| In Remembrance | 46 |
| Faces & Places | 48 |
| 2024 Membership Directory | 50 |
| 2024 Sire Summary..... | 53 |

Contents

| | |
|----|--|
| 12 | Don & Linda Harvey & Family 2024 Commercial Producer of the Year |
| 14 | Gnech Farms 2024 Seedstock Producer of the Year |
| 16 | New Zealand World South Devon Society Conference & Tour |
| 18 | Modern Seedstock Marketing Changes to how we interpret genetic merit |
| 20 | South Devon Excel Feed efficiency tests and carcass competitions |
| 22 | Evaluating Your Philosophy Genetic Selection |
| 26 | Peyton Volkman 2024 Youth Heifer Recipient |
| 27 | Iowa State Fair |
| 29 | MN Beef Expo |
| 31 | Going for the Gold in Ringgold 2023 Junior Nationals |
| 37 | 51st National Show National Western Stock Show |
| 43 | Northern International Livestock Exposition |

Working Together for Growth

South Devon breeders know the value of working together. Collaborating opens doors to new and better markets, and helps secure the future for the next generation. It also grows interest in the breed from cattlemen worldwide.

Those same benefits emerge when breeders work with industry-leading companies, including International Genetic Solutions (IGS). South Devon producers receive the most accurate and timely EPDs ever provided for the breed, including Genomic Enhanced EPDs. The science team at IGS continues to develop new indexes to benefit the breed. At the recent NASDA board meeting, board members unanimously approved the use of the API (All-Purpose Index) dollars per cow exposed under an all-purpose scenario and the Terminal Index (TI), dollars per cow exposed under a terminal-sire scenario.

Today the North American South Devon Association and South Devon producers, continue to use all available tools to promote and demonstrate that South Devon cattle are “The Profitable English Outcross”.

Once again, to remain sustainable in the cattle industry, the role of South Devon producers, now and into the future is to collect and provide all data to the association. By gathering all of this data, will lead to the South Devon breed having increasingly precise EPDs and accurate information to offer our buyers.

As you will read in this issue, South Devon have recently had a strong presence in feed efficiency tests and carcass competitions. This year, I would like to applaud those breeders who take the time to enter the competitions and provide the results to the association. Even if you are not part of a competition and receive your carcass data after harvest, it is important to provide it to the association. The more data that is received, the more accurate the carcass EPD will be.

Pulling together and growing as an association, gives us a better opportunity to face the challenges of an ever-changing beef industry and continue to produce a quality product.



There are several events scheduled for 2024 that breeders can attend and participate in, including the Junior National, to be held in Holton, Kansas, the Northern International Livestock Exposition, Iowa State Fair and the Minnesota Beef Expo. Participation is needed for several of the events to stay viable. I encourage everyone to take the time to participate and promote your herd at these sanctioned events.

Members are also offering quality genetics privately and through the Midland Bull Test

Sale, Wisconsin Beef Improvement Bull Test, DLCC Ranch, Nichols Farms, Elkington production sale and other sales across the country. I would encourage you all to attend, participate and support the events.

The South Devon family came together at the recent 51st National Show in Denver, Colorado. Members and exhibitors made the breed proud, by displaying a high-quality set of cattle. Congratulations to all the juniors, parents, exhibitors and winners for their dedication to the breed. The banquet and benefit auction, was very well-attended, and supporters showed up to support the juniors and exhibitors. Special thanks to Hayse Livestock for purchasing pick of the Harvey family heifer calves to benefit the North American South Devon Junior Association.

We have lost several important and loved individuals in the South Devon family this past year. Their stories are recognized and honored in this issue.

When we work together with cattle industry partners and members of our South Devon family, who share our values and our commitment to the breed, we all succeed. Let's continue finding ways to create connections that empower the South Devon breed.

Sincerely,

Dar Giess

NASDA President

2024 BOARD OF DIRECTORS

Dar Giess, President

33424 183rd Street, Pierz, MN 56364
(320) 249-2130 • dlccranch@outlook.com

Kurt Nelson, Vice President

W5137 290th Avenue, Bay City, WI 54723
(715) 594-3805 • knnfarmswi@gmail.com

Joel Popken, Treasurer

33360 220th Street, Swanville, MN 56382
(320) 547-2202 • jpopken@wisper-wireless.com

Dr. Dale Alumbaugh

193 SW 52nd Avenue, Trenton, MO 64683
(660) 359-7808 • farmer6th@live.com

Stephen Elmore

1235 W Mt. Gilead CH Rd., Clinton, NC 28328
(910) 385-6200 • sandbelmore@centurylink.net

Lane Giess

5406 Second Avenue, Timnath, CO 80547
(320) 293-1647 • lane.giess@gmail.com

Gino Gnech

20990 Morelock Road, Malin, OR 97632
(530) 905-0817 • jackigneche@yahoo.com

Jared Mumm

1717 Division Street, Commerce, TX 75428
(208) 308-5785 • jared.mumm@yahoo.com

Mike Steinlicht

16764 North Cedar Road, Valley Falls, KS 66088
(785) 224-8860 • m_steinlicht@yahoo.com

Jordan Vander Molen

1186 133rd Street, Pella, IA 50219
(641) 521-9917 • jordanjvm@gmail.com

Mike Vanden Berg

55 Ward Road, Hammond, NY 13646
(315) 744-4273 • mapleallis@gmail.com

Wyatt Lawrence

12147 293rd Avenue, Princeton, MN 55371
(763) 242-2804 • wyattherf99@gmail.com

COMMITTEE APPOINTMENTS

Executive

Steve Elmore, Dar Giess, Kurt Nelson, Joel Popken

Finance

Joel Popken, Chairman, Dr. Dale Alumbaugh, Kurt Nelson

Rules & Ethics

Steve Elmore, Chairman, Dr. Dale Alumbaugh, Dar Giess, Joel Popken, Mike Vanden Berg

Show, Sales & Events

Dar Giess, Chairman, Lane Giess, Gino Gnech, Wyatt Lawrence, Jared Mumm, Kurt Nelson, Joel Popken, Jordan Vander Molen

Donation Heifer Program

Jordan Vander Molen, Chairman, Gino and Emma Gnech, Nettie Nelson, Mike Vanden Berg, Tayler Vander Molen

Membership & Junior Programs

Stephanie Steinlicht, Chairman, Ciera Steinlicht, Co-Chairman, Wyatt Lawrence, Lynn Giess, Gino Gnech, Jared Mumm, Mike Steinlicht, Charles Terry, Jordan Vander Molen

Performance, Carcass, IGS Programs

Lane Giess, Chairman, Steve Elmore, Dar Giess, Jared Mumm, Joel Popken, Mike Vanden Berg

Breed Improvement & Promotion

Kurt Nelson, Chairman, Jim Brown, Lane Giess, Lynn Giess, Gino Gnech, Wyatt Lawrence, Jared Mumm, Mike Steinlicht, Mike Vanden Berg

NASDA Registry Office

Sherry Doubet

PO Box 850, Big Horn, WY 82833
Phone: 303-770-3130 • Fax: 303-770-9302
info@southdevon.com

NASDA Communications

Lynn Giess

33424 183rd Street, Pierz, MN 56364
southdevon_lynn@outlook.com • 320-250-9121
www.southdevon.com

NASDA BOARD OF DIRECTORS MEETING HIGHLIGHTS

- Voted to adopt the All-Purpose Index (API), dollars per cow exposed under an all-purpose scenario and the Terminal Index (TI), dollars per cow exposed under a terminal-sire scenario.
- Established a committee to handle the yearly donation heifer program. Jordan Vander Molen will be the chair. Also serving on the committee, Gino and Emma Gnech, Nettie Nelson and Mike Vanden Berg.
- Changed the fee structure to a flat fee of \$15 per head, regardless of the percentage of the animal.

NEWLY ELECTED TO THE NASDA BOARD

Jordan Vander Molen, Pella, Iowa, Wyatt Lawrence, Princeton, Minnesota and Mike Vanden Berg, Hammond, New York. Thank you to Jim Brown, Lodge Grass, Montana, Keith Elkington, Idaho Falls, Idaho and Carroll Nelson, Big Timber, Montana for your service to the North American South Devon Association.

JUNIOR ASSOCIATION ELECTS LEADERSHIP

The North American South Devon Junior Association elected leadership at the 2023 Junior National held in Mount Ayr, Iowa. Newly elected board members include: Jillian Kniep, Mount Ayr, IA, president; Emma Gnech, Malin, OR, vice president; Ciera Steinlicht, Valley Falls, KS, secretary. Directors: Layle McClenathan, Brooklyn, IA; Lauren Zaabel, Kellogg, IA; Chace Terry, Winchester, KS; Addie Kelm, Waseca, MN and Savannah Anderson, Wellsburg, IA.

DNA REQUIREMENTS

The North American South Devon Association requires all South Devon sires to have a low-density genotype on file with the NASDA office on all sires of 2024 calves.

DNA SERVICES

All DNA services and supplies must be coordinated through the North American South Devon Association office. A NASDA, DNA Cattle Testing and Summary Form is available on the NASDA website and must be submitted with all samples. DNA samples should be submitted to NASDA, PO Box 850, Big Horn, WY 82333 and the testing form e-mailed to info@southdevon.com.



2024 NASDA Board of Directors: pictured from left to right, front row: Joel Popken, Mike Steinlicht, Jordan Vander Molen and Dr. Dale Alumbaugh. Back: Lane Giess, Wyatt Lawrence, Gino Gnech, Kurt Nelson and Dar Giess. Not pictured: Mike Vanden Berg, Steve Elmore and Jared Mumm.



2024 NASDJA Board of Directors: pictured from left to right: Jillian Kniep, Emma Gnech, Addison Kelm, Ciera Steinlicht and Layle McClenathan.

BODY CONDITION SCORES (BCS)

In order to calculate more accurate indexes, NASDA is encouraging members to record body condition scores and cow weights. The Beef Improvement Federation has recommended guidelines and best practices and the best time to record a BCS is at weaning. A .50 rebate will be given by NASDA to members for each BCS turned in.

LETTER M FOR 2024

The year-letter animal identification letter for 2024 is "M" and will be followed by "N" in 2025.

2024 CALENDAR HIGHLIGHTS

MIDLAND BULL TEST

April 4

Columbus, Montana
midlandbulltest.com

DLCC RANCH ANNUAL SALE

April 20

Pierz, Minnesota
dlccranch.com

NASDJA 'JUNIOR NATIONAL'

June 26-29

Holton, Kansas
southdevon.com

IOWA STATE FAIR

August 9-12

Des Moines, Iowa
iowastatefair.org

NILE SOUTH DEVON & POUNDMAKER SHOW

October 11-19

Billings, Montana
thenile.org

MINNESOTA BEEF EXPO JUNIOR SHOW

October 17-20

St. Paul, Minnesota
mnbeefexpo.com

52nd NATIONAL SOUTH DEVON SHOW

January 2-6, 2025

Denver, Colorado
nationalwestern.com

NICHOLS FARMS BULL SALE

January 25, 2025

Bridgewater, Iowa
www.nicholsfarms.biz

MEMBERSHIP

The active adult membership fee is \$100 annually. The active annual junior membership fee is \$20. Please note if you are planning to participate in a NASDA sponsored open or junior show, you must be a member in good standing with the association. Juniors will be required to pay junior dues to participate in the upcoming Junior National in Holton, Kansas.

BEEF QUALITY ASSURANCE (BQA)

The National BQA Program has placed a high priority on animal-handling issues and developed a variety of resources for producers working to improve. Online BQA self-assessment tools are available for cow/calf, stocker and feedlot producers. Find these tools and other information about the BQA program as www.BQA.org.

YOUTH EXPERIENCE APPLICATIONS

The deadline for the 2025 NASDA Youth Experience heifer application is November 8, 2024. Juniors interested in applying for the heifer can visit the junior page at www.southdevon.com. The 2025 heifer is being donated by Hoxie Hill Farms, Hammond, New York.

WORLD SOUTH DEVON SOCIETY UPDATE

The 2023 World South Devon Society Tour and Conference was hosted by the New Zealand South Devon Society, November 15-30. Representatives from the U.S., Canada, South Africa, Australia and the United Kingdom

participated. Highlights of the conference: newly elected to the World Society Board of Directors: President, Richard Camp, United Kingdom; Vice President, Fraser McKenzie, New Zealand and Secretary, Teresa Walker, Canada. The youth ambassador program will be continued. Travis Moniz, the U.S. junior who travelled to New Zealand with the program, drew high praise from Brian Thomson, who said he was a very impressive and dedicated young man. The next World Tour and Conference will be held in the United Kingdom in 2026.

SEEDSTOCK & COMMERCIAL PRODUCER OF THE YEAR NOMINATIONS

Nominations for Seedstock and Commercial Producer of the Year awards are due December 1. Nomination forms can be found on the NASDA website, under Forms. E-mail completed nominations to southdevon_lynn@outlook.com.

CLINT KNIEP SCHOLARSHIP

A scholarship has been created to honor the life of Clint Kniep, Mount Ayr, Iowa. Juniors who are active members of the North American South Devon Junior Association will be eligible to apply for a \$500 scholarship. The Clint Kniep Memorial Scholarship will be presented to a junior member for continuing education or to build and maintain a South Devon herd. Application forms can be found on the NASDA Junior Page. Deadline to apply is November 8, 2024. The scholarship will be awarded at the 2025 National Show.

NEWS & NOTES

IOWA STATE FAIR

The 2024 Iowa State Fair South Devon events are August 9-12. The junior show will be held August 11 at 1 p.m. and the open show will be held the next day, August 12, at

the same time. The junior event will include a heifer and bull show, followed by showmanship. Entries are due July 1. For more information, contact Jordan Vander Molen, 641-521-9917.

ELKINGTON 45TH ANNUAL PRODUCTION SALE

The Elkington Bros. Polled Hereford and South Devon 45th Annual Production Sale was held February 3, 2023 in Idaho Falls, Idaho. Twenty South Devon bulls averaged \$3947. Top-selling bull, EBS Elker Sleep On 305K, a March 12, 2022 son of EBS Elker 1121 sold to Owen Ranch, Montana for \$7000. Bob Slagowski of Wyoming selected EBS Elker Performer 311K, a March 12, 2022 son of EBS Elker Machine 419E for \$5400. Five South Devon heifers averaged \$2250. The top-seller, EBS Miss Elker Supreme 310K, a March 2022 daughter of EBS Elker Machine 419E sold for \$2400 to Keith Larsen of Utah.

NASDA PUBLICATION ACCEPTING PHOTOS

The NASDA South Devon Review is looking for cover, editorial and advertising photos. Categories to consider: cattle in different environments, pasture, feedlot, show and sale; people working with cattle; industry-related events; and general ranch photos. Photos should strongly represent the principals and focus of the South Devon association. Vertical or horizontal format is acceptable. NASDA will pay \$100 for photos used on the cover of the South Devon Review and \$50 for those used in South Devon articles. Photos received by NASDA are assumed to be released by the photographer and permission given to NASDA and the South Devon Review for use. Send high-resolution photos to southdevon_lynn@outlook.com.

Selling Full Interest and Full Possession
April 20, 2024 • At the Ranch, Pierz, Minnesota

KADILLAC JACK



2024 National Champion South Devon Bull
Birthdate: 9/17/22 * Reg. #220621
Sire: DLCC Debut 88D * Dam: DLCC Claire 98C

LINCOLN



2024 National Champion South Devon Female
Birthdate: 3/31/23 * Reg. #221924
Sire: DLCC Gold Dust 64G * Dam: DLCC Dory 100D

Don't Miss this Once in a Lifetime Opportunity

**WORKING CATTLE
THAT COMPETE**

DLCC RANCH
SOUTH DEVONS | POUNDMAKERS | NAVIGATORS
www.DLCCRanch.com

CHAMPION GENETICS

NORTH AMERICAN

SOUTH DEVON

junior association

JUNIOR NATIONAL SHOW & LEADERSHIP CONFERENCE

June 26-29, 2024

HOLTON, KANSAS

CONTACTS:

STEPHANIE OR CIERA STEINLIGHT

785 / 640-0586

STEPHANIESTEINLIGHT@GMAIL.COM

LODGING:

SUPER 8 833-669-1047

RED ROOF INN 844-203-6221

AREA ACRES CABINS

MIKE 785 / 226-2889

CINDI 785 / 640-9161

ENTRY DEADLINE:

MAY 1, 2024

FORMS CAN BE FOUND AT:

[HTTP://SOUTHDEVON.COM/JUNIORS.HTML](http://southdevon.com/juniors.html)

T-shirt sizes need to be emailed
or texted to Stephanie or Ciera
by May 15.

TENTATIVE SCHEDULE OF EVENTS:

WEDNESDAY, JUNE 26

8A-6P MOVE IN & SET UP BARN &
STALLS

THURSDAY, JUNE 27

ALL CATTLE IN PLACE BY 8AM

8AM BREAKFAST

9AM EXHIBITOR MEETING &
ELECTION OF OFFICERS

930 AMBASSADOR INTERVIEWS

10AM CHECK IN OF POSTERS,
PHOTOGRAPHY, ETC.

1030AM COMPETITIONS BEGIN

(SPEECH, MARKETING)

NOON LUNCH

1PM QUIZ BOWL

3PM AG OLYMPICS

5PM CATTLE TO TIE OUTS

6PM DINNER & SPEAKER

FRIDAY, JUNE 28

8AM BREAKFAST

9AM GROUP & STATE PHOTOS

10AM OPENING CEREMONIES &
INTRODUCTION OF AMBASSADORS

1030AM BRED AND OWNED SHOW
(HEIFERS, BULLS, STEERS)

FOLLOWED BY SHOWMANSHIP

NOON LUNCH

2PM BARNYARD GAMES

5PM CATTLE TO TIE OUTS

6PM DINNER & SPEAKER

SATURDAY, JUNE 29

8AM BREAKFAST

10AM DEDICATION

1030AM PUREBRED & OWNED
FEMALE SHOW

FOLLOWED BY BACKDROP PHOTOS

NOON LUNCH

3PM AWARDS CEREMONY

5PM DINNER

6-10PM DANCE / KARAOKE

HOSTED BY THE KANSAS SOUTH DEVON FAMILIES

Don & Linda Harvey & Family

ARBELA, MISSOURI

By Hannah Gill



Accepting the 2024 Commercial Producer of the Year award at the National South Devon Show in Denver, the Harvey family, pictured from left to right: Emma Harvey, 2023 Missouri Cattlemen's Association Beef Queen, Linda and Don Harvey and NASDA Ambassador, Ciera Steinlicht.

Old fashioned values are what drives Don Harvey as he works the generational family farm that he was raised on near Memphis, Missouri. After serving in World War II, Don's father bought the farm neighboring Don's grandparents in 1949 and when Don got out of the Navy in 1974 after being drafted in 1969, he came home and rented 220 acres and started farming with his parents. Following suit, in 2007 after serving five years in the Marine Corps and two tours of duty in Iraq and Afghanistan, Don's son, Brian, also returned to Missouri and rented a neighboring farm.

Today, Don and his wife of 54 years, Linda, and alongside Brian and wife, Ashley, farm corn and soybeans and run cattle on 2,000 acres. After almost 30 years of crossing South Devon bulls over the original Angus cow herd that he bought from his father, Don is being recognized as the 2024 South Devon Commercial Producer of the Year.

Don was introduced to South Devon cattle in 1995 when his neighbor, Arlo Trueblood, showed him some South Devon bulls.

"I went with him one day to go get some bulls from Bill Kuntz, it's a couple hour drive, he was one of the original people who brought South Devons to this country back in the early seventies, and anyway I brought a bull home and that's how I got started," Don says.

He was drawn in by the big calves that he was seeing, and even more enticed to try the breed after seeing their docile temperament.

"The disposition and stayability are at the top of the list for me," Don says.

After Kuntz passed away, the Missouri farmers were tempted to quit crossing with South Devons, there were so many Angus and Simmental breeders within an hour drive, but they liked the breed so well that they started sourcing their bulls from Jordan Vander Molen, JVM Cattle Company in Iowa, and later on Dar Giess, DLCC Ranch in Minnesota.

"I'm having to drive a little farther to get them, but if those guys stay in it, we'll keep buying the cattle," he says.

Before South Devon, the Harveys originally purebred Angus cowherd was influenced by some Hereford, Simmental, Charolais and Gelbvieh. For the last 30 years, the herd has seen mainly South Devon bulls with a few Angus here and there to keep some hybrid vigor from crossbreeding.

"I'm probably 80 percent South Devon or more now," Don says. "They're black and red so you can't tell what's what anymore, but it's been a really good cross what the South Devon has done. They're really nice cattle and they're docile, that's probably my favorite thing about them."

EPDs changed the game for Don's herd, long gone are the days of choosing bulls simply from their phenotype.

"Now you look at a bull and you know everything about him, of course you don't give two thousand dollars for him anymore either," Don says. "I always look at the

spread, a positive birthweight, 70 to 80 pounds, with a high yearling weight. Any time you can get a 70-pound calf to wean 750 pounds, you've got a heck of a deal going. The weaning weight is okay, but I always look for that yearling weight and if they've got a low docility score, I just almost always look them over. No one needs to be getting hurt around cattle and you can breed that right into them faster than you can breed it out of them."

The Harveys background all of their calves for 45 to 80 days, depending on the time of year, and typically sell them when they are between 700 to 750 pounds.

"If you've got small cattle, you're just not going to get top price because they're wanting to feed these calves to 1,400, 1,500 pounds or bigger," Don says. "I sold some about a month ago that were 800 pounds and that's what I really like to do, 800-pound calves are really good money right now."

Just like his bull dealers, Don's choice of sale barn is a little bit further away than the sale barns that might be more convenient, closer to home, but he is loyal to the sale barns he started with over 30 years ago, those old-fashioned values that drive his farm and cattle operations.

"I don't jump around," he says. "People know your herd and they know your name and they know what you've always done. There's a lot of trust in cattle. I really enjoy meeting all the people in the cattle business." ❖

"They're really nice cattle and they're docile, that's probably my favorite thing about them."

Don Harvey
Arbela, Missouri



Don Harvey and grandsons, Landon and Brooks attend to a new calf on the Harvey ranch in Arbela, Missouri.

For the past 30 years, the Harvey herd has seen mainly South Devon bulls, with a few Angus to keep hybrid vigor from crossbreeding.



Gnech Farms

MALIN, OREGON

By Hannah Gill

In southern Oregon, close to the California border, in the shadow of the Mount Shasta volcano, Gnech Farms raises registered South Devon and South Devon composite cattle along-side a normally successful hay operation, recently diminished by the Klamath Basin Water Crisis.

The Klamath Basin, high desert and surrounded by mountains, is ideal for row crops and hay production, however the fight for water rights has begun to impact how many cows and how much hay the Gnech's, who are being awarded as the 2024 South Devon Seedstock Producers of the Year, are able to produce there on the farm.

"With that being said, we are extremely thankful for the cattle producers that have become like family to us," Jacki says, noting that in Oregon, they are pretty far from most of the South Devon producers that they have gotten to know since becoming involved with the breed. "From the endless phone calls and long trips from Oregon, we have found our people."

When faced with drought recently, the Gnech's were forced to feed hay to their cows year-round. When hay

was limited and hay prices were high, the farm was forced to consider selling half of their cattle.

"That's the thing about the South Devon people," Jacki says. "When we were talking to Jordan Vander Molen, we talked about genetics, we talked about bulls, we talked about our family, what's happening in our lives, and he said he has extra pasture."

For the Gnech's, being able to retain their genetics that they have been working years towards was huge. Gino and Jacki Gnech started their own herd from Jacki's father's Red Angus herd in the late 1980s. After they moved to the Oregon border, to a place where they hoped to expand their cattle herd and farming operation, they were introduced to Dar Giess and bought their first South Devon heifer ten years ago. It was their docility, material traits and feed efficiency that made the breed stand out to the Gino and Jacki, but they also felt like it would be an excellent environment to raise their daughters in. South Devon crossed with Red Angus and Salers have become a staple in their breeding program and the resulting Poundmakers are versatile enough to go in any direction.

"Our goal was always to raise our own genetics and for them to be successful," Jacki says. "There's nothing more rewarding than seeing our own genetics raise elite offspring, receiving the champion slap in the show ring."

In 2017, they received just that with Beefcake, a bull out of the first female that they bought from DLCC, one of their first South Devon offspring, winning Champion Poundmaker Bull at the National Western Stock Show. In 2023, Beefcake sired both the Champion South Devon and Champion Poundmaker females at the NWSS.

"We never would have imagined that Gnech Farms breeding would accomplish this," Jacki says.

That same year, they also won Champion Junior and Open South Devon Bull and Champion Junior Poundmaker Bull at the Northern International Livestock Expo and this year, the Champion Poundmaker Female at the



The Gnech Family donated the 2020 Youth Experience Heifer to Shelby Krebs, pictured from left to right: Emma, Gino, Jacki and Hanna.



Emma Gnech, wins both the 2024 Junior and Open Poundmaker female show with a daughter of EGR Beefcake.

“There’s nothing more rewarding than seeing our own genetics raise elite offspring, receiving the champion slap in the show ring.”

Jacki Gnech
Malin, Oregon

NWSS was bred and raised by Gnech Farms, though shown by Ciera Steinlicht.

“There is nothing better than seeing other cattle breeders trust our genetics and do well with them,” Jacki says.

They keep their cattle herd around 70 cows, allowing them to only keep the best of the best purebreds, striving to continually improve their genetic line. Their selection process is based on phenotype from the ground up, culling the cattle that are structurally incorrect and keeping the ones that prove necessary for growth. They sell show calves in the fall, typically through private treaty but they are starting to sell some through Midland Bull Test.

Since facing the water crisis, the Gnech Farms has expanded into California where water is more plentiful, but the Gnech’s will always be thankful for the help they received from their South Devon family when they were faced with letting go of their genetics.

“We’re working through it, we’ve had to make adjustments and we’re basically dry land farming now, but it’s just that kind of people in this association that are willing to help you and go out on that limb with you,” Jacki says. “Our South Devon relationships saved us.” ❖



Jaylene Young, Jacki, Gino and Emma Gnech, Gnech Farms, Malin, OR.

NEW ZEALAND HOSTS *World South Devon Society Conference and Tour*

By Bob & Karen Eicher, U.S. Delegates



Bob & Karen Eicher

The majority of our tour group of 40 was from the United Kingdom, with representatives from Australia, South Africa and Canada.

NOVEMBER 15-30, 2023

15 After enjoying the first of our daily fantastic breakfast buffets we boarded our luxurious bus for a short drive to the New Zealand Agricultural Show where the top attraction for our group was the cattle show. At 4:00 p.m. we were whisked away to the charming Flaming Rabbit restaurant for a delightful evening on their patio. We met the owners who proudly featured South Devon beef.

16 We met up with Fraser McKenzie and our bus and driver, Diane. They both entertained us with local lore and points of interest as we made our way to Rosehill South Devon for morning tea with Alister and Jeanette Maxwell. They run cows and sheep on 700 acres of gently rolling hills. From there we continued into the foothills of the snowcapped mountain range to Lake Tekapo where two optional tours were available in the evening.

17 We visited a Salmon Farm on a glacier fed stream and had a wonderful demonstration on how to filet our salmon. We continued to Lake Wakatipu where we were transferred by boat to downtown Queenstown. In the evening, we enjoyed an exhilarating gondola ride to a wonderful mountain peak restaurant buffet overlooking the Lake and Queenstown.



2023 World Tour Participants

18 We boarded TSS Earnslaw, a 1912 vintage steamship for a cruise over to Walter Peak Station where we enjoyed a BBQ lunch. This was followed by an incredible 4WD Coach tour of a sprawling Mt. Nicholas Station where they graze cattle and sheep in mountain pastures.

19 Found us on a boat heading out through Milford Sound to the Majestic Tasman Sea, spotting some penguins along the way. Leaving the boat, we traveled to Lake Te Anau and overnight accommodations.

20 We made our way to Wainuka South Devon where Fraser and his wife Sandra graciously showed us their farm and cattle. This was followed by a stop at Java South Devon where Steven and Julia Eden showed us their operation. We continued to our hotel where a sumptuous buffet awaited us. All our hotels were first class and comfortable!

21 We continued our scenic drive to Pinzridge South Devon, the home of Bridget, Ross and Jackson Lowry, where we enjoyed a hearty lunch. From there our journey took us to Loch Lomond South Devon where Brian and Ann Thomson, our hosts joined us for the remainder of the tour and Brian became our tour director. Dinner that evening was at the Outram Rugby Club, sponsored by Silver Fern Farms and Loch Lomond South Devon. Silver Fern Farms markets NZ beef, lamb and venison through the internet.

22 On our way back to Christchurch we visited Duntroon Farms hosted by Andrew Black who runs a dual-purpose dairy, marketing milk and calves for beef. Following that we visited Hewson Farms, a large-scale arable property near Christchurch where the terrain is level and they raise potatoes, onions, wheat and rye grass as well as vegetable seed such as carrots, kale and beetroot.

23 We stopped at Snowview South Devon run by Murray and Dene Wason. After an informative introduction to their program, we continued on to Burtergill South Devon, where we were hosted by Richard and Denise Van Asch. Richard also established



Aschwood Black South Devons



World South Devon Conference Delegates and Speakers, pictured from left to right: John Miller (South Africa), Betty Sampson (Canada), Robert Eicher (USA), Jo Scott (Targeted Breeding), Daniel Absolom (Rissington Cattle), Mervyn Rowe (United Kingdom), Brian Thomson (New Zealand), Richard Camp (United Kingdom) and Daphne Lines (Australia).

Aschwood Black South Devons, separate from Burtergill, to develop black genetics. We enjoyed viewing their impressive homestead and their cattle and were treated to a magnificent BBQ lunch. Reluctantly we had to leave and return to Christchurch, where we boarded a flight for Wellington, The Capital and site of our conference November 24-25.

26 Our first stop was the Southward Car Museum to explore a fascinating collection of classic automobiles. From there we motored north to Rosewood South Devon where we met Christine and Kevin Eagle and we learned about their operation.

27 We set out through the hills to Kaimoa South Devon, home of Mark Eagle, President of the NZ South Devon Cattle Society. The outstanding cattle and picturesque farm topped off with a delicious lunch, made for a most memorable morning. We then continued to a
(Continued on page 18)

(Continued from page 17)

peak overlooking Hawkes Bay and our dinner destination Craggy Range Winery. Leaving our scenic vantage point, we were delivered to our hotel to check in. We then took a short drive to the winery where we were treated to an elegant sit-down meal of three courses and local wines, a rare treat after all the delicious buffets. It was an evening to remember.

28 We spent a leisurely morning, hitting the road in the afternoon for Chipinga South Devon where Caroline Smith proudly introduced us to her unique operation. From there we left the hills for Lake Taupo where we checked in to our hotel and were then treated to a delightful dinner cruise and memorable evening on the water.

29 We found ourselves wrapped up in Maori Culture at Rotorua, an area of geothermal activity. We were also treated to an authentic Maori meal, cooked underground using hot stones, after a very interesting cultural performance.

30 We enjoyed a tour of Peter Jackson's Hobbiton Village used to film The Hobbit Film Series. The afternoon was spent touring the world renown Hamilton Gardens near Auckland.

This was a very well-organized and smartly run tour in a beautiful country and the people we met were very gracious and hospitable. Thank you to the New Zealand South Devon Society for their hospitality.



Snowview South Devons

MODERN SEEDSTOCK MARKETING

Must Be Better

*By Lane Giess, ASA Director of Commercial
& Nontraditional Data Programs*

If we take a trip down memory lane, we can remember a day when marketing seedstock could be described as simple compared to today. We would mail a sale catalog with the date and time of our auction, inside would have general information about our breeding program and then we would list the lots of animals for sale. Each lot's information would contain a couple of key pieces of information; birthdate, pedigree, adjusted weights, and ratios among other things. We used this information as the premise for describing genetic value among our offering. And at the time all of the separate sources of information were important and useful tools.

You could even say before modern genetic evaluations, ratios and adjusted weights were the best tools available to describe genetic merit. And before those, pedigree knowledge and visual performance appraisal were the best tools available to determine the genetic merit of individual animals. No doubt, our understanding of genetic merit has advanced since these times.

As I page through various current sale catalogs, I have to ask the question, are they any clearer, or easy to decipher than what's been printed in years past? My answer would be no, and in fact, I might even argue they are more confusing now than ever before and not for the reason you might think.

Modern sale catalogs that still print adjusted weights, ratios, and raw ultrasound scan results are full of contradicting pieces of information. Why? Because we know these observations describe more the performance of the animal itself and less what that parent animal may pass on to its progeny.

Ratios, adjusted weights, and raw scan data are indications of merit from an observed phenotype (BW, WW, Marbling etc.). However, as all animal breeders know,

an animal's phenotype is influenced by multiple factors - including how they were managed. Can future progeny inherit good management? No.

Then why do ratios, adjusted weights, and raw data still permeate most sale catalogs printed today?

As a seedstock breeder myself I get it. The success of every seedstock operation is dependent on two things; 1) a sound and reliable breeding program designed to improve the profitability of our customers, and 2) the ability to market those animals to stay financially sound in our business.

It's the responsibility of every seedstock producer to maximize genetic progress and improve the economic profitability of beef production. But in a difficult market and volatile business environment, marketing our livestock is vital to our bottom line.

We choose to print outdated tools like ratios and weights for inherently selfish reasons and reasons only magnifying our inability to educate on true genetic tools like EPDs.

The bottom line is, EPDs are better indicators for genetic merit than anything else available to seedstock breeders. They are more confusing, yes, but they are much more accurate and effective tools of making genetic improvements for a trait than anything else available. Science is not always understood, but in the case of EPDs, there is no debate among animal breeders and progressive producers. They work!

"The bottom line is, EPDs are better indicators for genetic merit than anything else available to seedstock breeders."

Lane Giess

ASA Director of Commercial & Nontraditional Data Programs

Modern sale catalogs still printing the outdated tools of ratios, actual weights and raw data are only adding to the difficulty of educating commercial cattlemen and are ultimately hurting your bottom line by introducing confusion and contradicting information.

In a world of "the customer is always right" I get, some are going to demand seeing these pieces of information and for those customers, I'd suggest a separate location to print what they are looking for such as your website or as a supplement sheet rather than printing in a catalog.

This conversation is one many will disagree with, but I think as the beef industry is scrutinized and the market becomes more competitive, I think it is clear the direction seedstock breeders must take mandates a change in how animals are marketed and how we educate our consumer. ❖

Reprinted with permission from The Register





South Devon Excel

IN FEED EFFICIENCY TESTS AND CARCASS COMPETITIONS

By Hannah Gill

A South Devon steer won the carcass competition at the New Mexico Beef Feeder Contest.

"I think we've found the right cross and adaptability to our environment."

Don Martinez
El Rito, New Mexico

Luck comes when proper preparation meets opportunity, so it's no surprise that in the last couple of years, South Devon breeders are having what some might call good luck while selling their cattle on the grid, retaining ownership through the end and feeding out their own cattle, or entering their animals in carcass and feed efficiency competitions.

Todd Weber sells his South Devon crossbred steers on the grid, but always keeps some back to take to the local locker plant for his family and local customers.

"Every year they keep telling me the beef keeps getting better and better," he says. It's only been eight years now that he has been using South Devon bulls, but the quality product is noticeable the further along they go. "We've just been trying to get our carcass quality and feed efficiency up, those are the traits we've been going after."

The carcass consistency has been huge for Weber, who typically feeds his own calves, although last year he couldn't see how a profit could be made

with high input costs so they sold calves as feeders, but hope to get back to feeding them at the ranch this year.

"It's been so long since we've not had some South Devons in there, but they've just done quite well for us," he says. "Their disposition is really good and we don't have a whole lot of feet problems anymore, we used to fight that in our feedlot, so they're just better cattle that you don't have a lot of problems with."

It's been over ten years now since Jeff Parr and his wife switched from dairy farming to beef cattle and they don't regret the choice at all, recently switching from using a local sale barn to selling their calves on the grid as well.

"We've taken eighteen head over to Upper Iowa Beef and they've all dressed out almost 64 percent hanging weight," Parr says. "Of the eighteen, I think we had eleven Prime, the rest high Choice and one Choice so they're grading really well."

The Parrs have a commercial herd that they cross South Devon bulls over, retaining all their heifers to keep growing the herd. Steers are

finished on a stuffer, shell corn and pellets. Recently, they've started using genomic testing to see where they're at and what areas the herd could use improvement in.

"We're really happy with where we're going now," Parr says. "From what I've heard from other people selling on the grid, we're getting some pretty good numbers, so we're just using the genomic testing to focus on maintaining and improving."

Using data to make decisions on the ranch is John Grande's bread and butter, he's been collecting data on his commercial Angus-Simmental-South Devon herd in Montana since the late 1990s. Over the last 20 plus years, he's learned that there's a difference between collecting data for it to sit in a shoebox and collecting actual, usable information.

"By actually working with International Genetic Solutions and getting everything in their database, that helps us transform this," he says. "We're developing the actual expected progeny differences on the

cattle and that's a tool that we can use a lot more than just raw data."

Not only does the information benefit Grande's end product, but it helps the seedstock producers he works with as well as the industry as a whole.

"The key is, obviously, you have to follow through to the packer," Grande says. "It's always a challenge, balancing what we want for terminal performance to get a feeder calf to gain well and efficiently in the feed yard, then hang a carcass that's going to get a score and good yield grade, with breeding the cow that's going to work for us on the ranch."

Thanks to the data he has seen, Grande knows that using crossbred cattle has brought the best balance between the two, and it was that balance between terminal and maternal traits that drew Grande to South Devon cattle so many years ago.

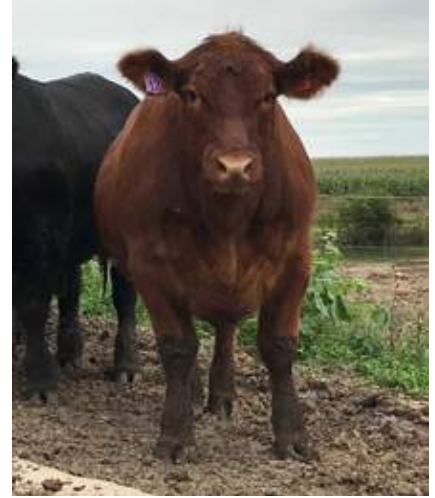
For Don Martinez, a seventh-generation rancher who recently won a carcass competition in New Mexico with a South Devon composite

steer, it was the maternal traits that drew him to the breed.

"We wanted to bring our cows down in size, get a little bit more milk and we liked the docility," he says. "Our region is pretty rough terrain for gathering, so we needed an efficient, docile cow."

When an opportunity arose to enter a competition, they took it. The steer that they entered into the New Mexico Beef Feeder Contest actually belonged to Martinez's daughter. After being weaned in October, the steer had until March to weigh 850 pounds, which he did easily with no health issues. After he was delivered to the test site, he gained 4 pounds per day to weigh 1,300 pounds by the target date. At the packer, the carcass graded choice, but what shocked Martinez the most was how tender it was.

"We've fed some out before, but we wanted to find out where we stood with our calves as far as feed efficiency and carcass quality," Martinez says. "We knew some of



South Devon-sired steers grade Prime and High Choice at Parr Farms, Ferryville, Wisconsin.

that for ourselves, but now we have the validity to it through a bonafide test with some other breeds. I think we've found the right cross and adaptability to our environment."

In an entirely different environment, Cassidy Flynn started her own little herd of South Devon cattle on her parent's 600 head commercial Angus ranch in Montana. Now four years in, she decided to donate a steer last year to the Montana State University Steer-A-Year program where it was up against some of the top ranches in the region and she came away with the Best Feed Efficiency award.

With her small herd, Cassidy either keeps the heifers for her own or sells them to her dad, who says they make really great mothers, feeds the steers until they're about 20 months, then sells them to her customer base. Though she is only 17 years old right now, her future plans include a cold storage license and to have beef on hand to sell.

"I think having these statistics behind her animals is huge," says her mother, Becky Flynn. "We knew they were good, but knowing that it costs money to finish a steer but that he's got really good reports on how efficient he is, that's a great choice for the consumer and for her." ❖



Todd Weber, Blockton, Iowa speaks highly of the carcass consistency of his South Devon-composite steers.

EVALUATING YOUR PHILOSOPHY OF *Genetic Selection*

2024 UPDATE

By Dr. Eric Mousel, Ph.D., University of Minnesota Extension

The type of bulls selected to contribute to a genetic program is one of the most important decisions cow-calf operators will make. These decisions will set the direction of the cowherd and the calf crop for many years to come. However, it may not be a real surprise to learn that the majority of bulls purchased in the U.S. cattle industry are selected primarily based on visual attributes rather than for traits that contribute to long-term profitability at the cow-herd level. Even with more relevant (and sometimes irrelevant) data available on any potential sire from a reputable seed stock program than ever before; the propensity for many producers to select bulls almost entirely based on visual appraisal hasn't really changed much over the years.

Why is this the case you might ask? It is probably a multi-faceted answer to that question, but the central theme likely revolves around some variation of the supposition that most cow-calf producers do not really have a guiding philosophy when it comes to their genetic program. They may select specifically for calving ease or something similar; but other than that, they generally are very vague on what exactly they are breeding for. Similarly, cow-calf producers that maybe do have a

specific thing they are breeding for may not have a very good grasp on how to achieve the specific target they are trying to hit, or simply do not have the discipline to repeatedly select for those specific criteria, to the exclusion of all of the 'noise'.

As a related tangent, there are an alarming number of cow-calf operators that do have a guiding philosophy to their breeding program, but the philosophy itself may not, in reality, be achieving the results they believe that it does. As an example, every year I have a significant number of producers call about mid-summer looking for 'anything with a set of nuts' or 'something that will make a live calf'. The underlying philosophy here is a suggestion that genetics do not matter to the bottom line and long-term success of a cowherd and thus there is a resistance to invest any capital in replacement breeding stock. Every time I encounter this philosophy, I can't help but to seriously challenge this thought process, based simply on the fact that in today's calf market, at the average cost of running a cow, every calf that weans off at less than 500 lbs. is a money loser.

That is a sobering statistic as the average weaning weight of calves in Cow Country USA is only slightly over 500 lbs. So, without a sales pitch for fancy bulls or this, or that, or the other; simple mathematics dictates that commercial cow operators with this philosophy do in fact, need more than a set of testicles and will require more than simply a live calf. It is important to remember that the genetics of those calves will need to offset not only the percentage of calves that don't make it to a breakeven weight, but also to cover the cost of the cows that never produced a calf due to failure to breed or death loss at calving or before weaning.

I think it is a good idea for any cow-calf operator to evaluate their breeding philosophy from time to time

"I think it is a good idea for any cow-calf operator to evaluate their breeding philosophy from time to time and a good place to start this process is to think about what the end point is for that particular program."

Dr. Eric Mousel, Ph.D.

University of Minnesota Extension



MVM Yukon, Walnut Grove Farm, Valley Falls, Kansas

and a good place to start this process is to think about what the end point is for that particular program. Most cow-calf operators in Cow Country USA sell their calves at weaning. However, it is still surprising to me to hear the number of producers that sell their calves at weaning, and these are the good operators, that place a very high value on selecting for marbling. The genetic potential to marble is a singular trait that the cow-calf producer that sells at weaning DOES NOT get paid for...ever. So why then are there so many cow-calf operators that select for marbling you might ask? I suspect that the biggest reason is because their seedstock supplier told them it was critical that they select for marbling and lo and behold THEIR seedstock supplier has the best bulls for marbling in the land! Of course I am not suggesting the marbling potential is a trait that never should be selected for by cow calf operators, but as a primary selection point it is a little out of place for an outfit that routinely sells calves at weaning. There just isn't a conduit in the market place at this time that will force buyers to reward producers for this type of potential. That may change in the near future, but it is not in place yet.

The point is, that when evaluating the end point of a breeding program, the operator needs to look at whether they sell at weaning, background calves, retain replacement heifers, retain calves in the feedyard or finish themselves, or retain through slaughter, etc. The economically relevant traits that should be selected for will largely be determined by this end point.

The next point of evaluation for most cow-calf operators is thinking about 'what do I need a cow to do to keep this program where it needs to be'? There are many, many things that will contribute to this question however, at a minimum I think we can all agree that these four things will be the base requirements for any cow herd to accomplish in order to main long-term profitability:

| | | |
|---|-------------------------------|----------------|
| 1 | Have a live calf | (Fertility) |
| 2 | Rebreed | (Fertility) |
| 3 | Wean a calf over 500 lb. | (Productivity) |
| 4 | Repeat this at least 12 times | (Longevity) |

So the question then becomes, what criteria should be selected for to achieve these four targets? There are probably a multitude of things that will contribute to achieving these targets, however, I think Tom Lasater of the Beefmaster breed of cattle fame probably put it most succinctly in the Lasater Philosophy of Breeding Cattle that a cow outfit need only to select for the six essentials to achieve a focus on long-term profitability in the cow business:

| | | | |
|---|-------------|---|--------------|
| 1 | Disposition | 4 | Fertility |
| 2 | Weight | 5 | Conformation |
| 3 | Hardiness | 6 | Milk |

Additionally, other icons of cattle breeding such as Jan Bonsma of South Africa have placed tremendous emphasis on other selection considerations such as fleshing ability, muscling, masculinity, hair coat quality, and parasite resistance as key contributors to profitability. Any number of additional criteria could be named and selected for, but the breeder must keep in mind that the more selection points made for a program, the more disciplined the breeder has to be in finding and evaluating replacement breeding stock.

Another key component of breeding philosophy that I think should at least be considered by any outfit is whether crossbreeding can help achieve the goals set for the program. After the wave of exotic breeds that entered the U.S. beef industry in the 1960's and '70's, it probably is no real surprise that the national cow herd is now mostly straight-bred Angus. However, it also should be no surprise then that cow productivity (weaning weights) has gone up very little since the time that we largely quit crossbreeding beef cattle. The heterosis afforded by crossing two different breeds and thus recovering the accumulated inbreeding depression found in all straight breeds, is the only real boost in production the average cow-calf operator is going to get. The real decision should probably be based on whether the goals of the program are to capture the individual heterosis as a result of that first cross of parents of different breeds or can the full maternal heterosis; where crossbred cows are mated to a third breed, be netted.

Individual heterosis has been shown to provide about an 8% boost in performance. Maternal heterosis on the other hand will provide an additional 15% boost in production. Heterosis is accumulative, so when both individual and maternal heterosis are captured in a breeding program, a whopping 23% boost in production can result from a solid crossbreeding strategy. I am not sure I could find a cow-calf operator in the country that wouldn't take a 23% boost in production with little to no additional investment.

Now, I know you are thinking to yourself, 'well, I only have 50 cows, how on earth can I crossbreed very effectively'? In fact, there are several ways in which a smaller herd can quickly capture the tremendous benefits from crossbreeding. There are several rotating breed systems that can be employed as well as the use of composite breeds. Once upon a time, it was fun to talk about using composite breeds in a crossbreeding program, but the reality was that a solid composite seed stock program was a pretty rare thing. But now, almost everyone reading this can probably name at least two or three composite seedstock producers in their region. Two, three, and four breed composites are no longer very hard to find. Of course, a tremendous amount of discipline must be exercised when crossbreeding with composites, but they are out there and there is a tremendous amount of data available from reputable programs on these types of sires.

How much is too much?

The final thing that invariably comes up is 'How much should I spend for bulls? This is a very open-ended question, and I don't necessarily have a very definitive answer for it. However, there are a couple of benchmarks I think a commercial outfit can use to evaluate what they should be spending for bulls. My dad always used to say, 'The cost of running a good bull is about the same as the cost of running bad bulls. You can pay for it on the front end or the back end, but you'll pay for it either way.' I suppose in a way, he was probably right. I like to look at it from a little different angle. Many outfits I have talked to cannot get their minds around how a commercial cow outfit can routinely spend \$6,000 - \$7,000 on bulls. I put the following table together to illustrate the cost of seed stock bulls on a cost per cow basis to help buyers get a little better idea of the true economics of bulls.

The far-left column of the table is the purchase price at the point of sale which ranges from \$3,000 - \$9,000. The 2nd column is the salvage value of that bull. I arbitrarily took 1,850 lbs. x \$1.10/lb. There is nothing magical about this figure, it is just an approximation and will vary widely from outfit to outfit. The third column is the net cost of using the bull (Price paid – salvage). The fourth column is an estimation of the number of cows a bull will breed in its lifetime. I figured this by taking an average rotation of 4 years on a breeding bull; 25 cows as a yearling and 35 cows as an adult. This comes out to roughly 130 total females bred in his lifetime. Column 5 is simply the net cost per cow per year of using that bull (Net cost/Cows bred per lifetime).

Estimated net cost per cow per year of bulls at different purchases prices.

From the table, you can see that the net cost per cow per year of a bull that brought \$7,000 on a sale is just a shade under \$40/cow/year. It seems to me that most commercial outfits kind of have that \$30-\$40/cow in mind when they think about genetic value. Where does that come from? I'm not entirely sure, but many of us have heard the old mark of 'the value of 4 feeder steers' as a proxy for what bulls should be bringing. Well, if you



MJB Ranch, Lodge Grass, Montana

do the math on 4 feeder steers right now, that's about \$6,500, which in those terms should be the average cost of bull. On a net cost per cow per year basis, \$7,000 to \$10,000 is not much of a stretch for an outfit that wants slightly above average bulls. I'm not suggesting commercial outfits should go out and spend \$7,000 to \$10,000 on bulls, I'm just pointing out the likely philosophical thinking behind this phenomenon. When you break purchase price down to a net cost per cow per year, 'expensive' bulls all of the sudden look much more reasonable. ❖

| PRICE PAID | SALVAGE | NET COST | COWS BRED PER LIFETIME | NET COST/COW/ YEAR |
|------------|---------|----------|------------------------|--------------------|
| \$3000 | \$2035 | \$965 | 130 | \$7.42 |
| \$4000 | \$2035 | \$1965 | 130 | \$15.11 |
| \$5000 | \$2035 | \$2965 | 130 | \$22.80 |
| \$6000 | \$2035 | \$3965 | 130 | \$30.50 |
| \$7000 | \$2035 | \$4965 | 130 | \$38.19 |
| \$8000 | \$2035 | \$5965 | 130 | \$45.88 |
| \$9000 | \$2035 | \$6965 | 130 | \$53.57 |

2024 NORTH AMERICAN
SOUTH DEVON ASSOCIATION

Youth Heifer Recipient

PEYTON VOLKMAN

Peyton Volkman, Cut Bank, Montana is the 2024 recipient of the North American South Devon Association youth experience heifer, donated by C/N Ranch, Carroll & Carole Nelson, Big Timber, Montana.

Peyton completed an application detailing his skills, ability and desire to raise, care for and learn about the breed. He shared his goals and experience in the 4-H market beef project and submitted two letters of recommendation as to his character and ability to care for the heifer. "I looked into the breed, what they'd need to live a good life and thought they'd fit well here," he said. "I was interested in the breed."

"I was really excited. I was pretty stoked to hear I won," Peyton said. He plans to AI his heifer this spring with hopes of raising a replacement heifer or 4-H steer for the Marias Fair and adding her to his growing herd of cows.

"Peyton has a willingness to learn and desire to learn more about the beef cattle industry and livestock production. He consistently attends any beef cattle related workshop or training related to livestock judging," said Kari Lewis, Glacier County extension agent. Whether it's calving cows, vaccinating calves, shipping, seeding, spraying, haying, or harvesting, Peyton is an integral part of all the facets of production on his family's ranch.

"I'm interested in learning about the South Devon breed precisely because, in northern Montana, we sometimes have very rough conditions, and the South Devon breed would do better in this climate than some other breeds. I would also like to meet other breeders associated with the South Devon breed," he said. "With the South Devon being a high-marbling breed, I will raise her steer calf as a 4-H calf and keep her heifers for replacement heifers." ♦



Left: Peyton Volkman with his heifer, CCN Montana Lovely L6. Right: Heifer donor, Carroll Nelson, C/N Ranch accepts the award for the 2024 recipient, Peyton Volkman.



"I'm interested in learning about the South Devon breed precisely because, in northern Montana, we sometimes have very rough conditions, and the South Devon breed would do better in this climate than some other breeds."

Peyton Volkman

Youth Heifer Recipient

Cut Bank, Montana



Dallas Hill, the 2023 Youth Heifer Recipient, along with Shiloh Neal, past NASDJA board member, pictured, prepared and presented the heifer at the 2024 NWSS. Emma Gnech, Malin, Oregon worked with the heifer from October through January to prepare her for the show. Also pictured, Ray Hill (left) and the donor of the heifer, Carroll Nelson, C/N Ranch, Big Timber, MT (right).

2023

Iowa State Fair

DES MOINES, IOWA



Champion Bull

JVM Kryptonite 251K

Sire: MMM Untouchable W810 – BD: 2/22/22

JVM Cattle Company, Pella, IA



Reserve Champion Bull

JVM Luigi 350L

Sire: JVM Easton 750E – BD: 2/24/23

JVM Cattle Company, Pella, IA



Champion Female

JVM Delilah 601D

Sire: KNN Country Boy 15A – BD: 3/10/16

JVM Cattle Company, Pella, IA



Reserve Champion Female

FC Katalina 3K

Sire: MJB Dillon 689D – BD: 3/4/22

Fick Cattle, Maiden Rock, WI



Champion Poundmaker Bull

FC SM Kingston K3

Sire: KNN Undenied 4H – BD: 9/14/22

Fick Cattle, Maiden Rock, WI



Reserve Champion Poundmaker Bull

WF Lil John 1L

Sire: JVM Easton 750E – BD: 2/16/23

White-Feela Farms, Wadena, MN



Champion Poundmaker Female

WGF Reba

Sire: WGF Chilly Pepper – BD: 3/2/22

Layle McClenathan, Brooklyn, IA



Reserve Champion Poundmaker Female

WF Latte 8L

White-Feela Farms, Wadena, MN

SHOWMANSHIP

PEEWEE

Champion

Trice Vander Molen

Reserve

Brexton Vander Molen

JUNIOR

Champion

Lane Kitzmann

Reserve

Payson Witt

INTERMEDIATE

Champion

Ciera Steinlicht

Reserve

Jace Peterson

SENIOR

Champion

Lauren Zaabel

Reserve

Layle McClenathan



Champion Beef Herdsman
Nederhoff Cattle Company
Wellsburg, IA

JUNIOR SHOW

CHAMPION FEMALE

WGF Karen
Ciera Steinlicht, Valley Falls, KS

RESERVE CHAMPION FEMALE

JVM Delilah 601D
Trice Vander Molen, Pella, IA

CHAMPION POUNDMAKER FEMALE

WGF Bellini
Jillian Kniep, Mount Ayr, IA

RESERVE CHAMPION POUNDMAKER FEMALE

SRA Rainbow Princess Lilly
Nederhoff Cattle Company, Wellsburg, IA

CHAMPION BULL

JVM Luigi 350L
Trice Vander Molen, Pella, IA

CHAMPION POUNDMAKER BULL

SRA Rose's Copper Kovu
Nederhoff Cattle Company, Wellsburg, IA

2023

MN Beef Expo

ST. PAUL,
MINNESOTA



Grand Champion Female

WF Karisma 2K
Sire: WF Wishful Thinking – BD: 2/8/22
Brady Mitchell, Detroit Lakes, MN



Reserve Champion Female

RP Kenna 33K
Sire: RP Hondo – BD: 4/3/22
Megan Fellbaum, Swanville, MN

Bar/E Cattle Co. South Devon

2017 Seedstock Producer of the Year



Congratulations Nicole Kibler
2017 NASDA Youth Experience
Heifer Recipient of
Bar E Teddy
donated by Bar/E Cattle Co.



Heifers For Sale

Steve & Barbara Elmore

1235 W. Mt. Gilead Church Rd.
Clinton, N.C. 28328
Cell: 910-385-6200
sandbelmore@centurylink.net

HOXIE HILL FARMS

Your Source for South Devon Genetics in the Northeast



BULLS AND FEMALES FOR SALE

Mike VandenBerg
55 Ward Road, Hammond, NY 13646
(315) 744-4273 • mapleallis@gmail.com

**2023 SEEDSTOCK
PRODUCER OF THE YEAR**



**Contact us for any
questions and info!**



Emma- 530-925-9101
Jacki- 541-371-0085
Gino-530-905-0817



Add us on Facebook!



**Selling April 4th at the
Midland Bull Test! Take
advantage of these
genetically elite bulls!
With added width and
dimension, yet great EPDs
for any ranchers needs.**

Going for the Gold in Ringgold

June 28-July 2, 2023



2023 NASDJA Junior National Participants



2023 Junior National Show Golden Pitchfork
Kansas



2023 Junior National Show Dedication
White Farms, Wadena, Minnesota



Special Honors

*People's Choice Herdsman, Layle McClenathan
Heartland Challenge, Lauren Zaabel
Herdsman of the Year, Jillian Kniep*



Impromptu Speech

*Pee wee, Fletcher Owen
Junior, Owen Kelm
Intermediate, Chace Terry
Senior, Lauren Zaabel*



Marketing

*Pee wee, Oakley Yarwood
Junior, Owen Kelm
Intermediate, Chace Terry
Senior, Lauren Zaabel*



Photo

*Pee wee, Fletcher Owen
Junior, Brooke Anderson
Intermediate, Chace Terry
Senior, Jillian Kniep*



Poster

*Pee wee, Oakley Yarwood
Junior, Owen Kelm
Intermediate, Chace Terry
Senior, Jillian Kniep*



Premier Breeder & Exhibitor
Ciera Steinlicht



Prepared Speech

*Pee wee, Trice Vander Molen
Intermediate, Ciera Steinlicht
Senior, Lauren Zaabel*



Quiz Bowl

*Pee wee, Oakley Yarwood
Junior, Laura Axness
Intermediate, Ciera Steinlicht
Senior, Lauren Zaabel*



Champion Showmanship

Peewee, Trice Vander Molen

Junior, Laura Axness

Intermediate, Ciera Steinlicht

Senior, Lauren Zaabel



Reserve Showmanship

Peewee, Oakley Yarwood

Junior, Owen Kelm

Intermediate, Addison Kelm

Senior, Jillian Kniep



Champion Female

WGF Karen

Sire: WGF Hondo – BD: 4/8/22

Ciera Steinlicht, Valley Falls, KS



Reserve Champion Female

JVM Jezibelle 145J

Sire: TLC Newt 945W – BD: 10/8/21

Jillian Kniep, Mount Ayr, IA



Champion Poundmaker Female

KNN Katness 10H

Sire: DLCC Energizer 87E – BD: 3/26/20

Oakley Yarwood, Bay City, WI



Reserve Champion Poundmaker Female

WGF Bellini

Sire: WGF Chilly Pepper – BD: 2/19/22

Jillian Kniep, Mount Ayr, IA



Champion Cow-Calf Pair

JVM Delilah 601D & JVM Luigi 350L

Sire: KNN Country Boy 15A – BD: 3/10/16

Sire of Calf: JVM Easton 750E – BD: 2/24/23

Trice Vander Molen, Pella, IA



Champion Bull

Rose's Copper Kovu

Sire: JVM Easton 750E – BD: 3/30/22

Savannah Anderson, Wellsburg, IA



HOST:

The Kniep Family

SPONSORS:

- Hulett and Sons Auto Salvage
- DLCC Ranch
- Bill McCleerey
- Ringgold County Cattlemen's
- Creston Automotive
- Northern States South Devon Association
- Sadler Cattle Company
- KNN Farms
- Shiflett Farms
- LT Farms
- Cowboy Twist Pretzels
- Grave's Forestry
- Willy's Restaurant & Bar
- Donna & Keith Moore
- G & I Feed & Grain
- Wyffels Seed
- Mount Ayr Inn & Suites
- Greenman Rentals
- Farm Bureau
- Podium Ink
- Hoffman Design
- Ringgold County Fair Board
- Kelm BBQ
- Kevin & Amy Kelm
- Casey's
- Daughton Farms
- Scott & Tracy Giles
- Brown Farms
- Mount Ayr FFA
- Mount Ayr School Construction Class
- Jacob Novak
- Hayse Farms
- HK South Devon
- Roberts Transportation
- Nichols Farms

Valley Hill FARM

Semen Available on FC Renegade 5G

— FOR MORE INFORMATION CONTACT —

Valley Hill Farm
Todd Leonard
715-338-1382

LAB Livestock
Lance A Brantner
651-214-9918

tdleonard@live.com • Ellsworth, Wisconsin

EARN UP TO

\$100

FOR YOUR

South Devon photos!

The North American South Devon Association and the South Devon Review are seeking outstanding photos that showcase South Devon, Poundmakers and South Devon composites.

Submit photos to
southdevon_lynn@outlook.com.



YOUR SOURCE FOR SOUTH DEVON GENETICS IN THE WEST

Midland Bull Test

THE FINAL SORT

April 4, 2024

5 Age-Advantaged South Devon Bulls
24 South Devon Yearling Bulls



ROYAL KLONDIKE RBG 206K * LOT 828

2023 Champion High Indexing and
High Efficiency South Devon Bull
MBT 121 * EFF Ratio 115



CHAMPION JUNIOR CONSIGNOR

Wiley Fanta, Royal Beef Genetics, Starbuck, MN

Bulls are measured for Performance, Efficiency, Maternal and Carcass
Semen Tested, Carcass Ultra-sounded, Screened for Soundness and Disposition
BVD-PI Tested Negative, Tested for efficiency (RFI) and Feed Conversion

2024 CONSIGNORS

MJB Ranch
406-679-0309

Thompson Land
& Cattle Company
801-391-8989

Gnech Farms
541-371-0085

Mallett Ranch
512-556-1021



Bulls,
Females,
Embryos
and Semen
available
year-round
from the
top genetics
in the breed.



JVM JOURNEY 102J

**JORDAN, TAYLER,
TRICE & BREXTON
VANDER MOLEN**

1186 133rd St.
Pella, Iowa 50219
(641) 521-9917
jordanjvm@gmail.com



Like our Facebook page at JVM Cattle Company

South Devon

Enhancing Heterosis



Diamond Plus Cattle

6161 56th Avenue SE | Gackle, ND 58442

David Presler | 701-320-6934
super_dave_03@hotmail.com

Roger & Judy Presler | 701-485-3505
dakotadpc@daktel.com

It's almost turn-out time. Are you prepared?

Our bulls are ready to go to work!



PRIVATE TREATY

50 Red Angus & South Devon Bulls

Dahl Backgrounding Facility, Streeter, ND

Call (701) 269-2351 for a showing

- Semen Tested, Ready to Work
- Registered
- Good Selection
- Calving Ease and Performance
- Convenient, No-Crowd Bull Shopping

Visit our website for listing:
www.dahlcattle.com



NATIONAL WESTERN STOCK SHOW
2024
Parade of Champions
DENVER, COLORADO



Champion Bull

DLCC Cadillac Jack 229K

Sire: DLCC Debut 88D – BD: 9/17/22

DLCC Ranch, Pierz, MN



Reserve Champion Bull

JVM Legendary 352L

Sire: JVM Easton 750E – BD: 3/12/23

JVM Cattle Company, Pella, IA



Champion Female

DLCC Lincoln 77L

Sire: DLCC Gold Dust 64G – BD: 3/31/23

DLCC Ranch, Pierz, MN



Reserve Champion Female

WF Lulu 14L

Sire: WF Wishful Thinking – BD: 7/3/23

White Farms, Wadena, MN



Champion Poundmaker Bull

DLCC Kooper 56K • Sire: DLCC Fate 56F – BD: 2/23/21
DLCC Ranch, Pierz, MN, Hoxie Hill Farms, Hammond, NY,
C/N Ranch, Big Timber, MT



Reserve Champion Poundmaker Bull

JVM Landslide 360L
Sire: JVM Easton 750E – BD: 3/17/23
JVM Cattle Company, Pella, IA



Champion Poundmaker Female

EGR Karisma 96K
Sire: JVM EGR Hollister 075H – BD: 12/15/22
Ciera Steinlicht, Valley Falls, KS



Reserve Champion Poundmaker Female

JVH Ms Lucy 36L
Sire: BC Progress 315U – BD: 3/9/23
Jaxson Van Haur, Valier, MT



Champion Junior Heifer

WGF Karen
Sire: WGF Hondo – BD: 4/8/22
Ciera Steinlicht, Valley Falls, KS
Sponsored by: KNN Farms, Bay City, WI



Reserve Champion Junior Heifer

JVM Khloe 203K
Sire: JVM Easton 750E – BD: 3/4/22
Lauren Zaabel, Kellogg, IA
Sponsored by: Popken South Devon, Swanville, MN



Champion Poundmaker Junior Heifer

ELS Princess of Fury 39K • Sire: VCR 711E Convoy 41H –
BD: 4/2/22 • Lindsey Strauch, Fairchild, WI
Sponsored by: White Farms, Wadena, MN



Reserve Champion Poundmaker Junior Heifer

EGR Karisma 96K
Sire: JVM EGR Hollister 075H – BD: 12/15/22
Ciera Steinlicht, Valley Falls, KS
Sponsored by: H & K Farms, Waseca, MN



**GOLDEN
COMB
AWARD
WINNER**

Bethany Strauch
Fairchild, WI

Sponsored by:
DLCC Ranch,
Pierz, MN

Special Honors

Premier Breeder & Exhibitor

DLCC Ranch
Pierz, MN

SHOWMANSHIP



Champion Senior Showman

Emma Gnech, Malin, OR
Sponsored by: Boone Hawley, Severn, MD

Reserve Champion Senior Showman

Addison Kelm, Waseca, MN
Sponsored by: Hayse Farms, Maryville, MO



Champion Junior Showman

Lindsey Strauch, Fairchild, WI
Sponsored by: Lane & Kate Giess, Timnath, CO

Reserve Champion Junior Showman

Jaxson Van Haur, Valier, MT
Sponsored by: Alumbaugh Farms, Trenton, MO

Scenes

FROM THE
2024 NATIONAL SHOW



Boone Hawley & Megan Fellbaum



Megan Fellbaum



Ciera Steinlicht



Jillian Kniep



Dallas Hill



Dar Giess



Emma Gnech





Leah Giess



Jaxson Van Haur



Lane Giess



Addison Kelm



Madison Holtz



Chace Terry

Thank You

SPONSORS & SUPPORTERS
OF THE 2024 BENEFIT AUCTION

SPECIAL THANKS:

Don & Linda Harvey, for donating pick of their heifer calves to benefit the North American South Devon Junior Association and to Hayse Farms, Maryville, MO for purchasing the pick.



Elkington

Polled Herefords & South Devon

CONTACT

Keith Elkington (Home)
208-523-2286
(Cell) 208-521-1774

Layne Elkington
(Cell) 208-681-0765

Brent Elkington (Home)
208-523-6461

Eric Elkington
(Cell) 208-881-4014

Range raised Polled Hereford and South Devon Cattle
Raised at High Elevation in the Deserts of Eastern Idaho
(annual precipitation 12 inches a year).

Bred to thrive on sparse feed with the need to travel for water.

We sell 25 to 30 range-raised coming two-year-old bulls on the first Friday in February every year and 5 to 10 bred heifers.

We are a short distance from Jackson Hole Wyoming and Yellowstone National Park. We invite you to come and visit if you are in the area. We will show you the cattle and take you fishing.



EBS ELKER 1121 642A

- A red South Devon bull that is moderate and thick with tremendous depth.
- We love the calves out of this bull. They are long, smooth and super thick. They are great!
- Owned with David Corker in Australia.

EBS ELKER EZCALVER 156H (217891)

- Calving ease sire with semen available. 1500 straws have been sold commercially and never touched a calf.

SAVE THE DATE

Annual Sale
February 7, 2025

**Semen Available
\$30/straw**

WGF Hondo



WGF Divina



WGF Karen



Jr. Get of Sire NWSS 2023



CS Livestock

Ciera Steinlicht
Valley Falls, Kansas



Mike, Stephanie & Ciera Steinlicht
Valley Falls, Kansas
785/224-8860



NORTHERN INTERNATIONAL LIVESTOCK EXPOSITION

2023

Parade of Champions

BILLINGS, MONTANA

**Champion Bull***EGR Leroy Brown 101**Sire: JVM Easton 750E – BD: 1/24/23**Emma Gnech, Malin, OR***Reserve Champion Bull***DLCC Kadillac Jack 229K**Sire: DLCC Debut 88D – BD: 9/17/22**DLCC Ranch, Pierz, MN***Champion Female***JVM Khloe 203K**Sire: JVM Easton 750E – BD: 3/4/22**JVM Cattle Company, Pella, IA***Reserve Champion Female***FC Katalina 3K**Sire: MJB Dillon 689D – BD: 3/4/22**Fick Cattle, Maiden Rock, WI*



Champion Poundmaker Bull

DLCC Kooper 56K • Sire: DLCC Fate 56F – BD: 3/16/22
DLCC Ranch, Pierz, MN; C/N Ranch, Big Timber, MT &
Hoxie Hill Farms, Hammond, NY



Reserve Champion Poundmaker Bull

FC SM Kingston K3
Sire: KNN Undenied 4H – BD: 9/14/22
Fick Cattle, Maiden Rock, WI



Champion Poundmaker Female

EGR Karisma 96K
Sire: JVM Hollister 075H – BD: 12/15/22
Emma Gnech, Malin, OR



Reserve Champion Poundmaker Female

TML Broadway Girl 224K
Sire: JVM Easton 750E – BD: 3/2/22
Travis Moniz, Princeton, CA



Champion Junior Heifer

EGR Karisma 96K
Sire: JVM Hollister 075H – BD: 12/15/22
Emma Gnech, Malin, OR



Reserve Champion Junior Heifer

TML Broadway Girl 224K
Sire: JVM Easton 750E – BD: 3/2/22
Travis Moniz, Princeton, CA



Champion Junior Bull

EGR Leroy Brown 101

Sire: JVM Easton 750E – BD: 1/24/23

Emma Gnech, Malin, OR



Reserve Champion Junior Bull

EGR Longmire 75K

Sire: EGR Beefcake – BD: 12/16/22

Emma Gnech, Malin, OR



You can view or purchase our quality South Devon Genetics at the National Show and Private Treaty.

**2024 Calves Sired By
DLCC Gold Medal 104G and
KNN Franks Red Hot 9K**

Looking Towards the Future

**Semen, Bulls Bred and
Open Females for Sale**

Joel or Robert Popken

33360 220th Street • Swanville, MN 56382

(320) 547-2202 • popkensouthdevon@outlook.com

IN REMEMBRANCE

Dorothy "Dottie" Dahl

1938-2023



Dorothy "Dottie" Dahl, 95, of Gackle, North Dakota died Monday, August 21, 2023 at the Jamestown Regional Medical Center. They say behind every good man is an even better woman. A quiet and patient soul content to stand in the shadows and let others shine. That woman

was Dottie. A wife. A mother. A sister. A grandmother. A true and genuine friend. For 66 years, she was the woman behind her beloved husband and cowboy John

(Jack) Dahl. She spent years taking care of four children, helping on the ranch known as Dahl Land and Cattle Company and feeding the cowboy crew as they worked to make hay or work the herd.

Dottie lived a life of service to her community. She was a long-time member of Emmanuel Lutheran Church, a Sunday school teacher, member of the choir, chairperson of the Cradle Role, member of Homemakers club, 4-H leader and Girl Scout, Cub Scout and Boy Scout leader. She was also actively involved in the cattle industry as a member of the North Dakota Cattlewomen where she held a variety of offices.

J. David "Dave" Nichols

1938-2023

One of the greats in the cattle industry Dave Nichols, of Bridgewater Iowa, died November 4th and what a legacy he built.

Nichols, 84, was a well-known advocate for the livestock industry. He was one of the few remaining from the first generation of performance pioneers from the 1950s that blazed a path for a new type of beef industry that was based on science and objective selection. He was also the last living member of the very first Beef Improvement Federation board from 1968. They were responsible for pulling all aspects of the industry together to standardize performance terminology, techniques and processes. During his 70-year career breeding seedstock, Dave never took his eyes off the horizon, always looking for new technology and the chance to participate in research that would move both Nichols Farms and the beef industry forward. As the largest seedstock operation in the Midwest, Nichols Farms has sold industry changing genetics throughout the country, as well as in 30 other countries. Genetics that include three purebred lines, Angus, Simmental and South Devon. Composite lines are then produced, Simmental x Angus, South Devon x Angus and a three-way composite using Angus, South Devon and Simmental.

Dave was a devoted American patriot, he made it clear that decisions he made would be based on what was good for the country first, second what was best for the industry, and third, what was best for the individual breeds he was involved with.

With the passing of J. David Nichols, the industry lost a unique legend, and his family, friends, the Nichols Farm crew and his community lost a pillar. He is survived by children: Fletcher and Jennifer, sister-in-law and partner in Nichols Farms Lillian, sister, Edy Hill, brother-in-law Lans Gibbs and two grandchildren.



Jack Weston Hanson

1944 - 2024

Jack Weston Hanson passed away peacefully at home on January 13, 2024, three weeks after his family had gathered to celebrate his 80th birthday.

Jack was born and raised on his family's farm in Grafton, North Dakota. After graduating from the University of North Dakota, he married his high school sweetheart, Barbara Daley and moved to Washington, D.C. to attend law school at George Washington University. After completing his law degree, Jack and his family returned to the Midwest,



settling initially in St. Paul, Minnesota, where Jack launched his 50-year career as a corporate lawyer. In addition to his legal practice, Jack for many years operated a farming and ranching partnership in central

Minnesota. Horseshoe Lake Farms grew to become one of the largest breeders of South Devon cattle in the U.S. Jack was active in the North American South Devon Association and served on its board. He and his family spent summers traveling and exhibiting all over the central and western U.S. Jack leaves behind a sizable collection of awards, banners and trophies from those years.

Jack is survived by his wife of 58 years, Barbara, children, Heather (David) Anderson, Amber (Mike) Paddock, Danika Babcock, Melanie (Mike) Hyland and Tanner (Michelle) Hanson and eleven grandchildren.

Clint Kniep

1968 - 2024

Clint was passionate about many things, but at the top of the list was his wife Shaun of 25 years and his two daughters, Jillian and Tessa.

His world were his girls and he would do anything to make them happy. Shopping trips, watching endless plays when Shaun was directing, trips to Good Vibes with Tessa, cattle shows with Jillian, watching games with Jillian or movies with Shaun and taking her out to eat. He coached the girls in t-ball and basketball and was the loudest one cheering in the stands. He was a fierce competitor, but an even fiercer advocate. Clint was always there for them all. His love was big and the hole he has left is enormous. Clint passed away January 16, 2024.



A graduate of Southwestern Community College, he taught art and coached basketball and baseball. He played slow pitch softball, league basketball and golf. Later, he worked as an engineer for Burlington Northern Santa Fe Railroad.

He was instrumental in planning and organizing the 2023 North American South Devon Association Junior National and Leadership Conference in Mount Ayr, Iowa. He has been a "Show Dad" at numerous shows, once again cheering and supporting his family.

He is survived by his wife Shaun, daughters Jillian and Tessa, mother Donna and Keith Moore, sisters Diane Long and Karla (Nic) Denney, father-in-law Preston Hayse, brother-in-law Peter Hayse (Sally) and many extended family members and friends who became family.

FACES & PLACES



Abe Fick, Maiden Rock, WI accepts congratulations from the judge at the 2023 Iowa State Fair.



Pete Hayse, Maryville, MO purchased pick of the Harvey family's heifer calves at the 2024 National banquet in Denver, CO to benefit the North American South Devon Junior Association.



Addison Kelm, Waseca, MN concentrates on the judge during the 2023 junior showmanship competition at the Iowa State Fair.

Trice Vander Molen, Pella, IA exhibits his calf at the Iowa State Fair.



Emma and Jacki Gnech, Malin, OR congratulate Mike Steinlicht, Valley Falls, KS at the 2024 National Show.

Send us a pic! Submit your high-resolution photos for consideration to southdevon_lynn@outlook.com.

Our champion-quality herd of South Devons has an exceptional foundation based on 28 years of carefully chosen high-quality maternal traits crossed with outstanding bulls.





DLCC Kooper - Denver Grand Champion 2024
*Semen available



Kooper's Dam - C/N's CCN Destiny D108
Denver Reserve Grand Champion 2017



DLCC Grandeur
*Semen available

C/N Grandeur calves for sale at DLCC 4/20/24



C/N Ranch
Carroll & Carole Nelson
Big Timber, Montana
406-690-8731 | cnelson@midrivers.com

Northern States


SOUTH DEVON ASSOCIATION

The NSSDA welcomes all South Devon and cattle enthusiasts. The NSSDA is passionate about the breed and diligently works on junior involvement, connecting seedstock producers with commercial cattlemen and promoting the breed as a viable outcross.

FOR MORE INFORMATION CONTACT:

Joel Popken, President
(320) 547-2202, jpopken@gmail.com

Nettie Nelson, Secretary
(715) 594-3805, knnfarmswi@gmail.com



JOIN US IN 2024

WBIA Bull Test
Platteville, WI, April 6

DLCC Ranch Bull Sale
Pierz, MN, April 20

NASDJA Junior National
Holton, KS, June 26-June 29


Bob Popken's 90th Birthday
Swanville, MN, August 3

Minnesota State Fair
St. Paul, MN, August 22


NSSDA Field Day
Swanville, MN, September 7

MN Beef Expo
St. Paul, MN, October 17-20


Congratulations Megan Fellbaum, Swanville, MN - 2023 Winner of the MYBEP South Devon Heifer. Provided by Whispering Spruce Farm, Miltons, MN and donated by NSSDA members.



MR COPPER SAMPSON 508C #208902



SBCC HICKORY 0156 #218531



SHOWBOAT CATTLE CO.

Efficient Grass-Raised Outcross Genetics
Semen available on several outcross bulls stored at KABSU for immediate delivery.

Charles, Lauren & Chace Terry
Winchester, KS (785) 224-9565
boat@showboatco.com

CANADIAN GENETICS FROM SAMPSON MCGREGOR AVAILABLE IN THE U.S.

SHOWBOAT Media Co.

LAUREN TERRY
Professional Livestock Photography
showboatmediaco.com • (785) 231-9424

California**TM LIVESTOCK**

BRIAN, JO & TRAVIS MONIZ
6990 NORMAN ROAD
PRINCETON, CA 95970
OUTLAWRODEO@GMAIL.COM

Colorado**DOUBLE RL CATTLE COMPANY**

5180 HIGHWAY 62
RIDGWAY, CO 81432
970-626-5485
LAURA@RRLRANCH.COM
HERD PREFIX: DRL

DEBBIE GRAY

14499 RAPID CREEK ROAD
HOTCHKISS, CO 81419-9438
970-872-9373
HERD PREFIX: DBM

LANE & KATE GIESS

5406 SECOND AVENUE
TIMNATH, CO 80547
320-293-1647
HERD PREFIX: DLCC

Idaho**ELKINGTON BROS & SONS**

KEITH ELKINGTON
5080 EAST SUNNYSIDE RD
IDAHO FALLS, ID 83406
208-523-2286
EPHRBULLS@HOTMAIL.COM
HERD PREFIX: EBS

Iowa**G & S SOUTH DEVONS**

GARY MILLER
63777 GALVESTON ROAD
ATLANTIC, IA 50022
712-243-5098
HERD PREFIX: GS

GEM SOUTH DEVONS

DR. BARBARA HARRE
13150 106 AVE
DAVENPORT, IA 52804
563-381-2294
BHARRE@AOL.COM
HERD PREFIX: GEM

HILL CREST SOUTH DEVONS

SHARON & SHAWN VAN WYK
401 460TH AVE
GRINNELL, IA 50112
641-593-6674
VANWYKWOODBLED@IOWATELECOM.NET
HERD PREFIX: EVW

JVM CATTLE COMPANY

JORDAN & TAYLER VANDER MOLEN
1186 133RD STREET
PELLA, IA 50219
641-521-9917
JORDANJVM@GMAIL.COM
HERD PREFIX: JVM

KUNTZ & SONS

4082 170TH STREET
BROOKLYN, IA 52211
641-522-7179
HERD PREFIX: SLF

LOWER GROVE FARM
1518 168TH STREET
NEW SHARON, IA 50207
641-780-9928
TERPYJR@GMAIL.COM
HERD PREFIX: WISR

MAR-BET FARM

MARTY & BETTY VANDER MOLEN
1186 133RD STREET
PELLA, IA 50219
641-594-4280
MARBET@NETINS.NET

NEDERHOFF CATTLE COMPANY

AUSTIN & VICTORIA NEDERHOFF
710 MONROE STREET
WELLSBURG, IA 50680
319-939-3323
NEDERHOFFCATTLECOMPANY@GMAIL.COM
HERD PREFIX: NCC

NICHOLS FARMS LTD

2188 CLAY AVE
BRIDGEWATER, IA 50837
641-369-2829
NICHOLS@NICHOLSFARMS.BIZ
HERD PREFIX: DS

Kansas**SHOWBOAT CATTLE COMPANY**

CHARLES TERRY
13266 WELLMAN RD
WINCHESTER, KS 66097-9718
785-224-9565
BOAT@SHOWBOATCO.COM
HERD PREFIX: SBCC

WALNUT GROVE FARM

MIKE & STEPHANIE STEINLICHT
16764 NORTH CEDAR ROAD
VALLEY FALLS, KS 66608
785-224-8860
GARRETTANDCO2000@YAHOO.COM
HERD PREFIX: WGF

Kentucky**WINDY CREEK FARMS**

MARK HAYNES
317 FOX CHASE DRIVE
ELIZABETHTOWN, KY 42701
270-769-1383
MARK@GOLDSTARREALTYKY.COM
HERD PREFIX: KSP

Massachusetts**THE KOEBKE FAMILY**

JIM & KRISANNE KOEBKE
33 KOEBKE ROAD
DUDLEY, MA 01571
508-245-7984
AMERADAHOLSTEINS@CHARTER.NET
HERD PREFIX: JKK

Minnesota**ALAINA CHUTE**

36468 405TH LANE
AITKIN, MN 56431
218-670-0194
AJCHUTEI@GMAIL.COM
HERD PREFIX: AJC

DLCC RANCH

DAR & LYNN GIESS
33424 183RD STREET
PIERZ, MN 56364
320-249-2130
DLCCRANCH@OUTLOOK.COM
HERD PREFIX: DLCC

DLCC WHIPLASH SYNDICATE

LYNN GIESS
33424 183RD STREET
PIERZ, MN 56364
DLCCRANCH@OUTLOOK.COM

J BOONE HAWLEY

33424 183RD STREET
PIERZ, MN 56364

J2 FARMS

AMANDA JOHNSON
41639 JIVARO STREET NW
OGILVIE, MN 56358
736-645-7997
AMJOHN816@GMAIL.COM
HERD PREFIX: JT

K & M CATTLE

MATT & KINDRA WAYRYNEN
31936 STATE HWY 65
MCGREGOR, MN 55760
218-839-0396
WAYRYNENK@GMAIL.COM
HERD PREFIX: KMC

WYATT LAWRENCE

12147 293RD AVENUE NW
PRINCETON, MN 55371
463-389-0625
WYATTHERF99@GMAIL.COM
HERD PREFIX: WLLC

MAPLE RIDGE FARM

MATTHIAS J NOVAK
8155 380TH AVE
HILLMAN, MN 56338
320-355-2129
NOVAKFARMS@ICLOUD.COM
HERD PREFIX: MRF

MARTIN CATTLE

JOSEPH & STACI MARTIN
46492 CANNON RIVER ROAD
WATERVILLE, MN 56096
612-644-0240
STACIT80@GMAIL.COM

2024 MEMBERSHIP DIRECTORY

JOEL POPKEN

33360 220TH STREET
SWANVILLE, MN 56382
320-547-2202
JPOPKEN@GMAIL.COM
HERD PREFIX: JP

R P FARMS

ROBERT POPKEN
33360 220TH STREET
SWANVILLE, MN 56382
320-547-2202
HERD PREFIX: RP

SADLER CATTLE COMPANY

GAIL JOHNSON & JIM SADLER
21140 SAINT FRANCIS BLVD
ANOKA, MN 55303
612-581-8706
GAIL_JOHNSON@YAHOO.COM
HERD PREFIX: SCC

MITCHELL SIMS

24862 YORK ROAD
HUTCHINSON, MN 55350
320-583-1403
KIMBLOCK@CO.MCLEOD.MN.US
HERD PREFIX: DD

THOMPSON LAND & CATTLE COMPANY

JACE & VEARL THOMPSON
6629 100 STREET SW
MOTLEY, MN 56466
801-391-8989
THEBRICK25@GMAIL.COM
HERD PREFIX: TLC

TWO STEP SYNDICATE

33424 183RD STREET
PIERZ, MN 56364
320-249-2130

WARPAINT RANCH

JOHN SCHMITZ
16450 117TH AVENUE 10
MAPLE GROVE, MN 55369
JPSCHMITZ1961@AOL.COM

WHISPERING SPRUCE FARM

TRAVIS & CONNIE SCHLOSSER
16312 CR #3 NE
MILTONA, MN 56364
218-943-4318
TRAVISCONNIE@MIDWESTINFO.NET
HERD PREFIX: WS

WHITE FARMS

EMILEE WHITE
40649 CO HWY 19
WADENA, MN 56482
218-639-6941
WEMILEE15@GMAIL.COM
HERD PREFIX: WF

Missouri

ALUMBAUGH FARMS

DALE V AND TERESA M ALUMBAUGH
193 SW 52ND AVE
TRENTON, MO 64683
660-654-0496
ALUMBAUGHFARMS@GMAIL.COM
HERD PREFIX: DA

CLEMONS CATTLE COMPANY

JOHN CLEMONS
23290 FAIR PLAY, MO 65649
417-399-4959
HERD PREFIX: CCC

BILLIE G CULP

20532 QUAIL ROAD
NEOSHO, MO 64850
417-628-3847
BGCULP@LERU.NET
HERD PREFIX: BGC

DIAMOND S DEVONS

PATRICK & MYRA SWYERS
33 COUNTRY ROAD 4055
SALEM, MO 65560
573-739-1161
SWYERSM@HOTMAIL.COM
HERD PREFIX: DSD

TRIPLE CROWN SOUTH DEVON FARM

RANDALL J CAMPBELL
4114 STATE RT U
RUSSELLVILLE, MO 65074
573-782-3418
RSCAMPBELL1984@GMAIL.COM
HERD PREFIX: TC

Montana

BIG COUNTRY BEEF GENETICS

LEO MCDONNELL & JIM BROWN
BOX 259
LODGE GRASS, MT 59050
406-639-2569
AMSALERS@AOL.COM
HERD PREFIX: BC

LEO MCDONNELL JR

W-2 RANCH
13 BULL DRIVE
COLUMBUS, MT 59019
406-433-5597
HERD PREFIX: LM

MJB RANCH

JIM & MARY BROWN
BOX 259
LODGE GRASS, MT 59050
406-639-2569
AMSALERS@AOL.COM
HERD PREFIX: MJB

MIDLAND BULL TEST

5 BULL DRIVE
COLUMBUS, MT 59019
406-322-5597
BULLS@MIDLANDBULLTEST.COM

CARROLL & CAROLE NELSON

150 HOWIE ROAD
BIG TIMBER, MT 59011
406-690-8731
CNELSON@MIDDRIVERS.COM
HERD PREFIX: CCN

Nebraska

LEAH GIESS

4721 N 133RD PLAZA #1223
OMAHA, NE 68164
HERD PREFIX: DLCC

WILSON RANCH

BLAINE G WILSON
2676 213TH TRAIL
LAKESIDE, NE 69351
308-762-6026
BWLSRANCH@GMAIL.COM
HERD PREFIX: BW

New York

HOXIE HILL FARMS

MIKE VANDENBERG
55 WARD ROAD
HAMMOND, NY 13646
315-744-4273
HERD PREFIX: HHF

North Carolina

BAR/E CATTLE COMPANY

D STEPHEN ELMORE
1235 W MT GILEAD CH ROAD
CLINTON, NC 28328
910-385-6200
SANDBELMORE@CENTURYLINK.NET
HERD PREFIX: DSE

North Dakota

DAHL LAND & CATTLE CO

JEFF DAHL
6442 55TH AVE SE
GACKLE, ND 58442
701-485-3206
JLDAHL@DAKTEL.COM
HERD PREFIX: DLC

DIAMOND PLUS CATTLE

ROGER & DAVID PRESLER
6161 56TH AVE SE
GACKLE, ND 58442
701-485-3505
DAKOTADPC@DAKTEL.COM
HERD PREFIX: DPC

JALLO STOCK FARM

WAYNE & NATHAN JALLO
12253 55TH ST NE
FORDVILLE, ND 58231
701-384-6153
WJALLO@POLARCOMM.COM
HERD PREFIX: JSF

JOHN KUCHERA

15350 COUNTY ROAD 10
WYNDMERE, ND 58081
701-439-2152
JKUCHERA@RRT.NET
HERD PREFIX: KL

Oklahoma

BOLLENBACH CATTLE COMPANY
A SCOTT BOLLENBACH
RR 1 BOX 5-A
KINGFISHER, OK 73750
405-375-5440
SCOTTBOLLENBACH@PLDI.NET
HERD PREFIX: SB

Oregon

GNECH FARMS
20990 MORELOCK ROAD
MALIN, OR 97632
541-371-0085
JACKIGNECH@YAHOO.COM
HERD PREFIX: GJG

South Dakota

GOLDHORN FARM
DONALD GOLDHORN
45454 183RD STREET
CASTLEWOOD, SD 57223
605-237-6277
DGOLDHORN@YAHOO.COM
HERD PREFIX: GF

Texas

MIKE & CONNIE MALLET
10602 N HWY 281
LAMPASAS, TX 76550
512-556-1021
MMCMALLET@OUTLOOK.COM
HERD PREFIX: MOM

JARED MUMM
1717 DIVISION STREET
COMMERCE, TX 75428
JARED.MUMM@YAHOO.COM
HERD PREFIX: SIG

Vermont

CIOFFI CATTLE COMPANY
KYLE CIOFFI
31 CLYDE ALLEN DRIVE
ST. ALBANS, VT 05478
802-935-5781
KLCIOFFI@YAHOO.COM

Washington

X-E STOCK RANCH
LEE & CONNIE ENGELHARDT
8354 RD 16 NE
MOSES LAKE, WA 98837
509-766-0161
XESOUTHDEVON@ADESSAOFFICE.COM
HERD PREFIX: XE

Wisconsin

LANCE A BRANTNER
N4524 710TH ST
ELLSWORTH, WI 54011
651-214-9918
HERD PREFIX: LAB

ROBERT EICHER
3092 CO ROAD E
GLENWOOD, WI 54013
715-265-4075

ABE & RENEE FICK
W2331 70TH AVE
MAIDEN ROCK, WI 54750
715-495-1956
AFCATTLE1@YAHOO.COM
HERD PREFIX: FC

HIDDEN PARADISE RANCH
DEVIN HADORN-PAPKE
S8020 HILLVIEW ROAD
EAU CLAIRE, WI 54701
715-878-4088
HPCATTLE.COM
DEVIN@JOHNSONLITHO.COM

KNN FARMS
KURT & NETTIE NELSON
W5137 290TH AVENUE
BAY CITY, WI 54723
715-594-3805
KNNFARMSWI@GMAIL.COM
HERD PREFIX: KNN

VALLEY HILL FARM
TODD LEONARD
N4524 710 STREET
ELLSWORTH, WI 54011
715-273-4520
TDLEONARD@LIVE.COM
HERD PREFIX: VHF

ZIMMER LAND & LIVESTOCK
CODY ZIMMER
N2701 COUNTY ROAD D
BAY CITY, WI 54723
715-590-2124
HERD PREFIX: ZLL

Wyoming

NORTH AMER SOUTH DEVON ASSOC
PO BOX 850
BIG HORN, WY 82833
303-770-3130
INFO@SOUTHDEVON.COM
WWW.SOUTHDEVON.COM

WYOMING SOUTH DEVONS
PO BOX 72
MANVILLE, WY 82227

International

DIAMOND M SOUTH DEVON
ELSIE BEDDOES
BOX 389
DUCHESS AB CANADA T0J 020
403-566-2467
DMRRANCHING@GMAIL.COM
HERD PREFIX: DMS

HLUSEK FARMS, INC.
ADAM & HEIDI HLUSEK
1089 CHIMNEY VALLEY ROAD
WILLIAMS LAKE, BC CANADA V2G 4W5
604-853-1958
HLUSEKFARMS@GMAIL.COM
HERD PREFIX: HLU

SAMPSON MCGREGOR STOCK FARM
RALPH MCGREGOR & B G SAMPSON
BOX 6769
BONNYVILLE, AB CANADA T9N 2H2
780-826-7077
SMS@XPLOARNET.COM
HERD PREFIX: SMS

MISSOURI COTEAU CATTLE COMPANY
GARY JONES
BOX 38
CRANE VALLEY, SK, CANADA, SOH 1B0
306-631-6274
JONESRANCH@LIVE.CA

2023 HALLMARK DAMS

The North American South Devon Association in continuing efforts to stress performance and productivity, recognizes the superior females of the breed, the Hallmark Dams. To identify these cows, emphasis was placed on early puberty, breeding, early calving and superior production over time. A Hallmark Dam is the standard by which all South Devon cows can be judged.

Hallmark Dams Criteria

1. Dams must have weaned a calf born since January 1, 2023.
2. Dams must be at least 50 percent South Devon and have had a minimum of three calves.
3. The maximum age for a dam to have had her first calf is 30 months of age.
4. A maximum calving interval of 395 days.
5. Every calf produced must have weaning records submitted.
6. A progeny average 205-day adjusted weaning weight ratio of at least 105.

The following list recognizes 46 South Devon cows bred and owned by 11 South Devon breeders. The first table lists each individual Hallmark Dam and her current owner. The table on page 54 shows the 33 sires of these distinguished dams, while the last table lists all breeders of these Hallmark Dams. Once a dam reaches this status she will continue to be recorded in the database as a Hallmark Dam.

| Owner Dam's Name | No. Calves | Avg. 205-Ratio | Calving Interval | Owner Dam's Name | No. Calves | Avg. 205-Ratio | Calving Interval |
|---|---------------|-------------------|---------------------|--|---------------|-------------------|---------------------|
| BIG COUNTRY BEEF GENETICS, LODGE GRASS, MT | | | | KNN FARMS, BAY CITY, WI | | | |
| MJB LUCKY CHARM 9673G (1/2 Blood) | 3 | 114.0 | 385 | KNN IKEA 3F (Fullblood) | 4 | 108.8 | 372 |
| DAHL LAND & CATTLE CO, GACKLE, ND | | | | KNN KIA RIO 9F (Fullblood) | 4 | 111.0 | 362 |
| DLC MISS RYDER 950G (Fullblood) | 3 | 107.0 | 369 | KNN DAPHNE 30Z (Fullblood) | 10 | 109.1 | 364 |
| DLC MS SHILO 956G (Fullblood) | 3 | 110.3 | 376 | CARROLL & CAROLE NELSON, BIG TIMBER, MT | | | |
| DLC MR ROMEO 436 (Purebred) | 8 | 107.9 | 365 | CCN MONTANA GENESIS G8 (1/2 Blood) | 3 | 105.7 | 366 |
| DLCC RANCH, PIERZ, MN | | | | NICHOLS FARMS LTD, BRIDGEWATER, IA | | | |
| DLCC GIDGET 49G (1/2 Blood) | 3 | 108.3 | 378 | NFL BLACKBIRD DSC003 (1/2 Blood) | 7 | 109.6 | 368 |
| DLCC GINGER 7G (1/2 Blood) | 3 | 112.0 | 369 | JOEL POPKEN, SWANVILLE, MN | | | |
| DLCC GOLDBLOCKS 34G (1/2 Blood) | 3 | 109.3 | 377 | JP FOXTROT 82F (Fullblood) | 4 | 105.8 | 370 |
| DLCC GWEN 31G (Fullblood) | 3 | 106.7 | 364 | R P FARMS, SWANVILLE, MN | | | |
| DLCC BOWS 16F (1/2 Blood) | 4 | 105.3 | 371 | RP GINA 14G (Fullblood) | 3 | 105 | 371 |
| DLCC GEMMA 36F (1/2 Blood) | 4 | 117.5 | 369 | RP FLINT 02F (3/4 Blood) | 4 | 111.8 | 375 |
| DLCC MANDI 76F (Fullblood) | 4 | 107.8 | 361 | RP72E (Fullblood) | 5 | 106 | 373 |
| DLCC BELINDA ANN 69E (Fullblood) | 5 | 105.2 | 369 | SHOWBOAT CATTLE CO, WINCHESTER, KS | | | |
| DLCC BELMONT 49E (Purebred) | 5 | 111.6 | 368 | SBCC LMT EUPHORIA 7148 (Fullblood) | 5 | 106.2 | 391 |
| DLCC COCOA 65E (Fullblood) | 5 | 105.6 | 349 | TRIPLE CROWN SOUTH DEVON FARM, RUSSELLVILLE, MO | | | |
| DLCC EMMA LEE 32E (Fullblood) | 5 | 111.0 | 371 | TC GAZE 910G (Fullblood) | 3 | 107.7 | 357 |
| DLCC EVITA 20E (Fullblood) | 5 | 111.2 | 370 | TC GOOD LOOKIN' 916G (Fullblood) | 3 | 105.3 | 383 |
| CCN MONTANA DESTINY D108 (1/2 Blood) | 6 | 105.7 | 379 | TC DARLIN' 634D (Fullblood) | 6 | 108.2 | 377 |
| DLCC BISCUIT 18D (Fullblood) | 6 | 105.2 | 375 | TC DREAMY 661D (Fullblood) | 6 | 106.2 | 373 |
| DLCC DORY 100D (1/2 Blood) | 6 | 109.2 | 363 | TC CAMPBELL 523C (Fullblood) | 7 | 109.6 | 366 |
| DLCC HARMONY 61D (Fullblood) | 6 | 105.0 | 365 | TC BARBIE 430B (Fullblood) | 8 | 131.4 | 366 |
| DLCC LOOP 72D (Fullblood) | 6 | 111.5 | 369 | CIMARRON CLIMAX 302A (Fullblood) | 9 | 105.9 | 364 |
| DLCC ROSE 69D (Fullblood) | 6 | 113.8 | 365 | TC APACHE (Fullblood) | 9 | 105.4 | 371 |
| DLCC SYDNEY 73D (Fullblood) | 6 | 105.5 | 365 | TC ZONE (Fullblood) | 10 | 106.4 | 367 |
| DLCC LOOP 19B (Fullblood) | 8 | 105.9 | 362 | TC YEARN (Fullblood) | 11 | 109.9 | 367 |
| DLCC SIERRA 92Y (Fullblood) | 11 | 111.9 | 366 | TC YES (Fullblood) | 11 | 107.4 | 374 |

2023 HALLMARK BREEDERS

BIG COUNTRY BEEF GENETICS, LODGE GRASS, MT 1
 BOLLENBACH CATTLE COMPANY, KINGFISHER, OK 1
 DAHL LAND & CATTLE CO, GACKLE, ND..... 3
 DLCC RANCH, PIERZ, MN 21
 KNN FARMS, BAY CITY, WI..... 3
 CARROLL & CAROLE NELSON, BIG TIMBER, MT 2

NICHOLS FARMS LTD, BRIDGEWATER, IA 1
 JOEL POPKEN, SWANVILLE, MN 1
 R P FARMS, SWANVILLE, MN 3
 SHOWBOAT CATTLE CO, WINCHESTER, KS 1
 TRIPLE CROWN SOUTH DEVON FARM, RUSSELLVILLE, MO 10

2023 HALLMARK SIRES

| Sire's Name | Reg. Number | Percentage | No. Dams | Sire's Name | Reg. Number | Percentage | No. Dams |
|------------------------|-------------|-------------|----------|---------------------------|-------------|-------------|----------|
| CIMARRON REBEL 738T | 192356 | (Purebred) | 3 | DLCC COPY CAT 69C | 208807 | (Fullblood) | 1 |
| DLCC DEBUT 88D | 210912 | (Fullblood) | 3 | DLCC MANHATTAN 33Z | 201588 | (Purebred) | 1 |
| DLCC DODGE CITY 78Y | 200720 | (Purebred) | 3 | DLCC WHIPLASH 1Y | 199722 | (Purebred) | 1 |
| MMM UNTOUCHABLE W810 | 199405 | (Purebred) | 3 | GUM HILL RED 530 | 208776 | (Fullblood) | 1 |
| DLCC BATTLECRY 27B | 206340 | (Fullblood) | 2 | KNN MIDWEST 20D | 210364 | (Purebred) | 1 |
| DLCC BELMONT 25B | 206413 | (Fullblood) | 2 | KNN RANGER 37T | 193165 | (Purebred) | 1 |
| DLCC CHECKERS 12C | 208860 | (Fullblood) | 2 | LCOC LUCKY CHARM X091C | 213663 | (3/4 Blood) | 1 |
| DLCC TWO STEP 84B | 205508 | (Purebred) | 2 | LCOC TRINITY JO64B | 210338 | (3/4 Blood) | 1 |
| TC XPLOSION | 198811 | (Fullblood) | 2 | LEACHMAN ACCELERATE X166D | 213673 | (3/4 Blood) | 1 |
| 9 MILE FRANCHISE 6305 | 213626 | (3/4 Blood) | 1 | MJB ROMEO 337Z | 201824 | (Purebred) | 1 |
| CIMARRON AVENGER 135Y | 203209 | (Fullblood) | 1 | MJB SHUR LOC 106S | 188977 | (Fullblood) | 1 |
| CIMARRON BOLD OKIE 20X | 200992 | (Fullblood) | 1 | SBCC CHARISMA 5119 | 208947 | (Fullblood) | 1 |
| CIMARRON FOREMOST 320A | 204509 | (Fullblood) | 1 | TC DIRECTION 652D | 210664 | (Fullblood) | 1 |
| CIMARRON SUPERIOR 442 | 125263 | (Fullblood) | 1 | TC YADIER | 200213 | (Fullblood) | 1 |
| CIMARRON TRIUMPH 705T | 192390 | (Fullblood) | 1 | X-E DEPUTY D908 | 211556 | (Fullblood) | 1 |
| DLC MR SHILO 164 | 210079 | (Fullblood) | 1 | X-E MR OZ D713 | 210703 | (Fullblood) | 1 |
| DLC RIDER 5100 | 208061 | (Purebred) | 1 | | | | |

PERCENTILE CHARTS

ALL SIRES

| | CED | BW | WW | YW | Milk | MWW | CEM | REA | MARB | FAT | CWT | DOC | STAY |
|-----|------|------|----|-----|------|-----|------|-------|------|-------|-------|-----|------|
| 5% | 15.4 | -2.3 | 83 | 131 | 27 | 61 | 7.9 | 0.63 | 0.1 | -0.07 | 12.3 | 17 | 22 |
| 10% | 14.8 | -1.9 | 74 | 123 | 21 | 56 | 6.8 | 0.62 | 0.1 | -0.07 | 11.2 | 16 | 21 |
| 15% | 12.5 | -1.3 | 72 | 113 | 19 | 55 | 6.0 | 0.55 | 0.1 | -0.08 | 3.3 | 15 | 20 |
| 20% | 12.0 | -0.5 | 70 | 110 | 18 | 52 | 5.4 | 0.50 | 0 | -0.08 | -0.1 | 15 | 19 |
| 25% | 11.4 | 0.1 | 68 | 105 | 18 | 49 | 5.0 | 0.47 | 0 | -0.08 | -4.7 | 14 | 18 |
| 30% | 11.0 | 0.3 | 67 | 101 | 16 | 48 | 4.7 | 0.45 | -0.1 | -0.09 | -6.8 | 13 | 17 |
| 35% | 10.3 | 0.5 | 64 | 98 | 16 | 47 | 4.4 | 0.38 | -0.1 | -0.09 | -10.0 | 13 | 17 |
| 40% | 10.1 | 0.6 | 62 | 94 | 16 | 46 | 3.9 | 0.34 | -0.1 | -0.09 | -11.4 | 13 | 16 |
| 45% | 9.7 | 0.8 | 61 | 93 | 15 | 44 | 3.7 | 0.33 | -0.2 | -0.09 | -11.8 | 12 | 16 |
| 50% | 9.3 | 1.0 | 60 | 90 | 14 | 43 | 3.1 | 0.29 | -0.2 | -0.10 | -14.3 | 12 | 15 |
| 55% | 8.9 | 1.3 | 58 | 86 | 13 | 41 | 2.8 | 0.26 | -0.2 | -0.10 | -15.6 | 12 | 15 |
| 60% | 8.7 | 1.4 | 57 | 83 | 13 | 39 | 2.4 | 0.25 | -0.2 | -0.10 | -16.7 | 11 | 15 |
| 65% | 8.3 | 2.0 | 56 | 81 | 12 | 38 | 2.2 | 0.22 | -0.2 | -0.10 | -18.5 | 11 | 15 |
| 70% | 7.9 | 2.1 | 53 | 80 | 11 | 37 | 1.9 | 0.18 | -0.3 | -0.11 | -21.7 | 11 | 14 |
| 75% | 7.4 | 2.4 | 51 | 76 | 10 | 36 | 0.9 | 0.14 | -0.3 | -0.11 | -22.9 | 10 | 13 |
| 80% | 6.8 | 2.5 | 49 | 72 | 9 | 36 | 0.1 | 0.09 | -0.3 | -0.12 | -24.6 | 10 | 13 |
| 85% | 6.1 | 2.9 | 47 | 71 | 7 | 34 | -0.7 | 0.02 | -0.3 | -0.12 | -26.0 | 8 | 12 |
| 90% | 5.1 | 3.4 | 43 | 63 | 3 | 32 | -1.4 | -0.08 | -0.4 | -0.12 | -30.9 | 7 | 12 |
| 95% | 4.2 | 4.4 | 41 | 58 | 0 | 27 | -3.8 | -0.15 | -0.4 | -0.13 | -34.0 | 5 | 9 |

PERCENTILE CHARTS

ALL DAMS

| | CED | BW | WW | YW | Milk | MWW | CEM | REA | MARB | FAT | CWT | DOC | STAY |
|-----|------|------|----|----|------|-----|------|------|------|-------|-------|-----|------|
| 5% | 7.7 | -1.7 | 64 | 97 | 25 | 53 | 13.9 | 0.53 | 0.3 | -0.01 | 19.8 | 14 | 19 |
| 10% | 6.9 | -0.9 | 60 | 89 | 23 | 49 | 13.0 | 0.48 | 0.2 | -0.04 | 14.7 | 13 | 18 |
| 15% | 6.4 | -0.4 | 57 | 83 | 22 | 47 | 12.4 | 0.44 | 0.1 | -0.05 | 8.5 | 12 | 16 |
| 20% | 6.0 | 0 | 54 | 79 | 21 | 45 | 12.0 | 0.41 | 0 | -0.07 | 1.9 | 11 | 16 |
| 25% | 5.6 | 0.4 | 52 | 74 | 21 | 43 | 11.6 | 0.38 | 0 | -0.08 | -2.9 | 11 | 15 |
| 30% | 5.1 | 0.7 | 50 | 70 | 20 | 42 | 11.2 | 0.36 | -0.1 | -0.08 | -6.0 | 10 | 14 |
| 35% | 4.6 | 0.9 | 47 | 67 | 19 | 40 | 10.8 | 0.35 | -0.1 | -0.09 | -9.3 | 10 | 13 |
| 40% | 4.2 | 1.2 | 45 | 63 | 19 | 39 | 10.3 | 0.34 | -0.1 | -0.09 | -12.0 | 9 | 12 |
| 45% | 3.8 | 1.4 | 43 | 60 | 18 | 38 | 9.9 | 0.33 | -0.2 | -0.10 | -14.5 | 9 | 12 |
| 50% | 3.3 | 1.6 | 41 | 57 | 17 | 37 | 9.5 | 0.32 | -0.2 | -0.10 | -16.4 | 9 | 11 |
| 55% | 2.9 | 1.9 | 40 | 53 | 17 | 36 | 9.1 | 0.31 | -0.2 | -0.10 | -18.2 | 8 | 10 |
| 60% | 2.5 | 2.1 | 38 | 50 | 16 | 35 | 8.7 | 0.30 | -0.2 | -0.11 | -19.8 | 8 | 10 |
| 65% | 2.1 | 2.4 | 36 | 47 | 15 | 34 | 8.3 | 0.28 | -0.2 | -0.11 | -21.2 | 8 | 9 |
| 70% | 1.7 | 2.7 | 34 | 44 | 14 | 33 | 7.8 | 0.27 | -0.2 | -0.11 | -22.5 | 7 | 8 |
| 75% | 1.2 | 3.0 | 32 | 41 | 13 | 32 | 7.4 | 0.25 | -0.3 | -0.11 | -23.5 | 7 | 7 |
| 80% | 0.6 | 3.3 | 30 | 37 | 12 | 30 | 6.8 | 0.22 | -0.3 | -0.12 | -24.6 | 7 | 6 |
| 85% | -0.1 | 3.7 | 28 | 33 | 11 | 29 | 6.2 | 0.19 | -0.3 | -0.12 | -25.8 | 6 | 4 |
| 90% | -0.9 | 4.4 | 25 | 29 | 9 | 27 | 5.3 | 0.14 | -0.3 | -0.12 | -27.1 | 6 | 4 |
| 95% | -2.4 | 5.3 | 21 | 23 | 7 | 24 | 3.9 | 0.06 | -0.3 | -0.12 | -28.9 | 5 | 3 |

NON-PARENT

| | CED | BW | WW | YW | Milk | MWW | CEM | REA | MARB | FAT | CWT | DOC | STAY |
|-----|------|------|----|-----|------|-----|-----|------|------|-------|-------|-----|------|
| 5% | 14.5 | -2.2 | 81 | 125 | 23 | 59 | 7.3 | 0.61 | 0.4 | -0.03 | 26.5 | 16 | 21 |
| 10% | 13.3 | -1.5 | 76 | 117 | 22 | 56 | 6.5 | 0.53 | 0.3 | -0.04 | 18.2 | 15 | 20 |
| 15% | 12.6 | -1.0 | 72 | 112 | 21 | 55 | 5.9 | 0.49 | 0.2 | -0.05 | 14.3 | 14 | 19 |
| 20% | 12.1 | -0.7 | 70 | 107 | 20 | 53 | 5.5 | 0.46 | 0.2 | -0.06 | 11.2 | 14 | 18 |
| 25% | 11.7 | -0.4 | 68 | 104 | 20 | 52 | 5.2 | 0.43 | 0.1 | -0.06 | 8.1 | 13 | 18 |
| 30% | 11.3 | -0.2 | 66 | 102 | 19 | 51 | 4.8 | 0.41 | 0.1 | -0.07 | 5.0 | 13 | 17 |
| 35% | 11.0 | 0 | 65 | 99 | 18 | 50 | 4.5 | 0.39 | 0 | -0.07 | 2.5 | 13 | 17 |
| 40% | 10.7 | 0.2 | 63 | 97 | 18 | 49 | 4.2 | 0.37 | 0 | -0.08 | -0.3 | 13 | 17 |
| 45% | 10.4 | 0.4 | 62 | 95 | 17 | 48 | 3.9 | 0.35 | 0 | -0.08 | -2.6 | 12 | 16 |
| 50% | 10.1 | 0.6 | 61 | 93 | 17 | 47 | 3.6 | 0.33 | -0.1 | -0.08 | -4.4 | 12 | 16 |
| 55% | 9.9 | 0.8 | 60 | 90 | 16 | 46 | 3.3 | 0.31 | -0.1 | -0.09 | -6.8 | 12 | 15 |
| 60% | 9.5 | 1.0 | 59 | 88 | 15 | 45 | 3.0 | 0.28 | -0.1 | -0.09 | -8.8 | 12 | 15 |
| 65% | 9.3 | 1.2 | 57 | 86 | 15 | 44 | 2.7 | 0.26 | -0.1 | -0.09 | -11.4 | 11 | 15 |
| 70% | 9.0 | 1.4 | 56 | 84 | 14 | 43 | 2.5 | 0.23 | -0.2 | -0.09 | -13.5 | 11 | 14 |
| 75% | 8.6 | 1.6 | 55 | 81 | 13 | 42 | 2.2 | 0.20 | -0.2 | -0.10 | -15.6 | 11 | 14 |
| 80% | 8.3 | 1.9 | 53 | 79 | 12 | 40 | 1.9 | 0.17 | -0.2 | -0.10 | -18.4 | 10 | 13 |
| 85% | 7.8 | 2.3 | 51 | 76 | 11 | 39 | 1.6 | 0.13 | -0.2 | -0.10 | -20.6 | 10 | 13 |
| 90% | 7.2 | 2.7 | 49 | 72 | 10 | 37 | 1.1 | 0.07 | -0.2 | -0.11 | -23.5 | 9 | 12 |
| 95% | 6.3 | 3.3 | 45 | 64 | 7 | 34 | 0.4 | 0 | -0.3 | -0.11 | -26.9 | 8 | 11 |

2024 SIRE SUMMARY - MAIN LISTING

| Name | DOB | % | #Herds | CED | BW | WW | YW | Milk | MWW | CEM | Marb | CW | Fat | REA |
|--|---------|----|----------------------|-------------|--|-----------|------------------------|-----------|-----------|-------------|-------------|--------------|--------------|--------------|
| Reg# | H/P/S | | #Dcalves | Acc | Acc | Acc | Acc | Acc | | Acc | Acc | Acc | Acc | Acc |
| Color | | | Sire | | | | Dam | | | | | | | |
| Breeder | | | | | Owner(s) | | | | | | | | | |
| BC GARTH 11G | | | 2 | 6.8 | 2.3 | 73 | 127 | 13 | 49 | 0.5 | -0.2 | 13.6 | -0.10 | 0.57 |
| 216999 | 10/1/19 | FB | 0 | 0.44 | 0.49 | 0.45 | 0.43 | 0.14 | | 0.21 | 0.35 | 0.37 | 0.29 | 0.35 |
| BLK | POLLED | | MJB EXTRA 77IE | | | | BC AMELIA 6645D | | | | | | | |
| BIG COUNTRY BEEF GENETICS LODGE GRASS MT | | | | | BIG COUNTRY BEEF GENETICS LODGE GRASS MT | | | | | | | | | |
| BC PROGRESS 315U | | | 17 | 6.1 | 1.3 | 74 | 131 | 19 | 56 | 5.0 | -0.1 | -7.0 | -0.12 | 0.33 |
| 194458 | 1/28/08 | FB | 266 | 0.67 | 0.85 | 0.81 | 0.79 | 0.69 | | 0.59 | 0.68 | 0.70 | 0.62 | 0.67 |
| BLK | POLLED | | MJB ROMEO 125R | | | | BC SASSY 6714S | | | | | | | |
| BIG COUNTRY BEEF GENETICS LODGE GRASS MT | | | | | BIG COUNTRY BEEF GENETICS LODGE GRASS MT; TRIPLE M INCORPORATED CLINTON NC | | | | | | | | | |
| BGC P2E | | | 1 | 11.7 | 2.0 | 63 | 86 | 16 | 47 | 3.7 | 0.1 | -14.6 | -0.12 | 0.34 |
| 212550 | 2/27/17 | PB | 0 | 0.45 | 0.52 | 0.49 | 0.48 | 0.16 | | 0.18 | 0.27 | 0.37 | 0.25 | 0.32 |
| RED | POLLED | | TLC DEETZ 9012 | | | | BGC SIB | | | | | | | |
| BILLIE G CULP NEOSHO MO | | | | | BILLIE G CULP NEOSHO MO | | | | | | | | | |
| CIMARRON AVENGER 135Y | | | 5 | 5.2 | 2.9 | 65 | 97 | 10 | 43 | -4.2 | -0.4 | -14.3 | -0.10 | 0.17 |
| 203209 | 3/9/11 | FB | 58 | 0.34 | 0.76 | 0.72 | 0.71 | 0.45 | | 0.37 | 0.24 | 0.39 | 0.17 | 0.29 |
| RED | POLLED | | CIMARRON CARUSO 923W | | | | CIMARRON SAVANAH 538R | | | | | | | |
| BOLLENBACH CATTLE COMPANY KINGFISHER OK | | | | | MJB RANCH LODGE GRASS MT | | | | | | | | | |
| CIMARRON REBEL 738T | | | 1 | 12.9 | 0.6 | 60 | 93 | 4 | 34 | 6.7 | -0.4 | -16.7 | -0.12 | 0.41 |
| 192356 | 2/22/07 | PB | 139 | 0.26 | 0.61 | 0.53 | 0.54 | 0.42 | | 0.24 | 0.20 | 0.35 | 0.18 | 0.31 |
| RED | POLLED | | MJB ROUNDUP 208R | | | | CIMARRON BELLE 362N | | | | | | | |
| BOLLENBACH CATTLE COMPANY KINGFISHER OK | | | | | BRIKEN FARMS LLC JEFFERSON CITY MO | | | | | | | | | |
| CIMARRON REBEL 941W | | | 4 | 7.3 | 2.2 | 64 | 96 | 16 | 48 | 8.4 | -0.3 | -16.1 | -0.13 | 0.22 |
| 198091 | 2/17/09 | PB | 113 | 0.43 | 0.67 | 0.60 | 0.61 | 0.50 | | 0.41 | 0.29 | 0.41 | 0.23 | 0.36 |
| BLK | POLLED | | MJB ROUNDUP 208R | | | | CIMARRON PLAYMATE 136L | | | | | | | |
| BOLLENBACH CATTLE COMPANY KINGFISHER OK | | | | | MJB RANCH LODGE GRASS MT; NICHOLS FARMS LTD BRIDGEWATER IA | | | | | | | | | |
| CIMARRON SUPERIOR 442 | | | 29 | 7.9 | 1.5 | 57 | 94 | 15 | 44 | 1.4 | 0.1 | -26.0 | -0.06 | -0.08 |
| 125263 | 3/27/94 | FB | 1017 | 0.81 | 0.89 | 0.84 | 0.85 | 0.81 | | 0.69 | 0.67 | 0.70 | 0.60 | 0.66 |
| RED | POLLED | | CIMARRON RULER 815 | | | | CIMARRON SUNSET 935 | | | | | | | |
| BOLLENBACH CATTLE COMPANY KINGFISHER OK | | | | | WAYNE DOHE LINCOLN KS | | | | | | | | | |
| CIRCLE S 61X | | | 7 | 15.4 | -4.0 | 6 | 2 | 20 | 22 | 4.1 | -0.3 | -25.4 | -0.12 | 0.22 |
| 110060 | 3/8/88 | FB | 115 | 0.33 | 0.73 | 0.67 | 0.67 | 0.50 | | 0.36 | 0.13 | 0.19 | 0.10 | 0.23 |
| RED | POLLED | | LEACHMAN DEVON 828T | | | | LEACHMAN JH S873 | | | | | | | |
| CIRCLE S RANCH COMPANY THREE FORKS MT | | | | | WILLIAM L MCCLEEREY MANVILLE WY | | | | | | | | | |
| COTEAU BEAVER SUNRISE 510 | | | 1 | 12.1 | 1.9 | 47 | 74 | 3 | 27 | 3.7 | -0.2 | -10.9 | -0.11 | 0.32 |
| 203370 | 2/24/12 | PB | 41 | 0.29 | 0.62 | 0.59 | 0.57 | 0.40 | | 0.27 | 0.03 | 0.26 | 0.01 | 0.22 |
| RED | POLLED | | HHSD BEAVER 1ST | | | | COTEAU SUNRISE 85 | | | | | | | |
| DIAMOND PLUS CATTLE GACKLE ND | | | | | DIAMOND PLUS CATTLE GACKLE ND | | | | | | | | | |
| DLC BLACKFOOT LAD 226 | | | 1 | 11.6 | 1.0 | 62 | 93 | 17 | 48 | 5.3 | -0.1 | -7.4 | -0.09 | 0.39 |
| 214210 | 4/20/18 | FB | 2 | 0.28 | 0.51 | 0.49 | 0.50 | 0.20 | | 0.21 | 0.12 | 0.29 | 0.10 | 0.21 |
| BLK | POLLED | | MJB BLACKFOOT 546C | | | | DLC MS HUDSON 406 | | | | | | | |
| DAHL LAND & CATTLE CO GACKLE ND | | | | | DAHL LAND & CATTLE CO GACKLE ND | | | | | | | | | |
| DLC MR BLACKFOOT 300 | | | 2 | 12.0 | 0.8 | 51 | 80 | 21 | 47 | 6.1 | 0.1 | 1.9 | -0.08 | 0.26 |
| 212830 | 4/1/17 | PB | 3 | 0.56 | 0.70 | 0.65 | 0.64 | 0.21 | | 0.27 | 0.40 | 0.46 | 0.34 | 0.43 |
| BLK | POLLED | | MJB BLACKFOOT 546C | | | | DLC LEGEND LASS 423 | | | | | | | |
| DAHL LAND & CATTLE CO GACKLE ND | | | | | MJB RANCH LODGE GRASS MT | | | | | | | | | |
| DLC ROYAL LAD 1139 | | | 8 | 16.8 | -0.3 | 57 | 90 | 27 | 56 | 8.8 | -0.1 | -10.5 | -0.08 | 0.31 |
| 200031 | 5/7/11 | FB | 146 | 0.52 | 0.79 | 0.71 | 0.71 | 0.54 | | 0.44 | 0.23 | 0.36 | 0.20 | 0.27 |
| RED | POLLED | | DLC BLACK LAD 60W | | | | DLC ROCKETTE 803U | | | | | | | |
| DAHL LAND & CATTLE CO GACKLE ND | | | | | MJB RANCH LODGE GRASS MT; ELKINGTON BROS & SONS IDAHO FALLS ID; DLCC RANCH PIERZ MN; | | | | | | | | | |
| DLC SHILO LAD 112 | | | 1 | 5.0 | 3.9 | 73 | 111 | 14 | 51 | -1.3 | -0.1 | 4.0 | -0.10 | 0.36 |
| 212810 | 4/17/17 | FB | 8 | 0.23 | 0.54 | 0.52 | 0.52 | 0.24 | | 0.22 | 0.07 | 0.25 | 0.06 | 0.20 |
| RED | SCURRED | | DLC SHILO LAD 1100 | | | | DLC MISS LEGACY 317 | | | | | | | |
| DAHL LAND & CATTLE CO GACKLE ND | | | | | DAHL LAND & CATTLE CO GACKLE ND | | | | | | | | | |
| DLCC BELMONT 25B | | | 7 | 8.5 | 1.0 | 73 | 123 | 18 | 54 | 0.9 | -0.2 | -11.2 | -0.10 | 0.27 |
| 206413 | 3/24/14 | FB | 32 | 0.37 | 0.55 | 0.50 | 0.52 | 0.36 | | 0.28 | 0.31 | 0.39 | 0.26 | 0.34 |
| BLK | POLLED | | DLCC WHIPLASH 1Y | | | | DLCC MANDI 2X | | | | | | | |
| LEAH GIESS PIERZ MN | | | | | MISSOURI COTEAU CATTLE CO CRANE VALLEY SK CANADA | | | | | | | | | |

2024 SIRE SUMMARY - MAIN LISTING

| Name | Reg# | DOB | % | #Herds | CED | BW | WW | YW | Milk | MWW | CEM | Marb | CW | Fat | REA |
|-----------------------------|---------|-------|---|--|-------------|-------------|-----------|-----------------------|-----------|-----------|-------------|-------------|--------------|--------------|--------------|
| | | | | #Dcalves | Acc | Acc | Acc | Acc | Acc | | Acc | Acc | Acc | Acc | Acc |
| | Color | H/P/S | | Sire | | | | Dam | | | | | | | |
| | Breeder | | | Owner(s) | | | | | | | | | | | |
| DLCC BLACK ENUF 127J | | | | 54 | 5.1 | -0.3 | 41 | 62 | 16 | 36 | -3.8 | -0.3 | -32.1 | -0.08 | 0.18 |
| 169690 | 5/15/99 | PB | | 515 | 0.71 | 0.81 | 0.75 | 0.76 | 0.68 | | 0.52 | 0.45 | 0.54 | 0.38 | 0.52 |
| BLK | POLLED | | | MAPLE LEAF EBONY IIF | | | | DLCC TILLY 67E | | | | | | | |
| DLCC RANCH PIERZ MN | | | | JOEL POPKEN SWANVILLE MN; DLCC RANCH PIERZ MN; TRIPLE M INCORPORATED CLINTON NC | | | | | | | | | | | |
| DLCC CADET 4C | | | | 1 | 7.7 | 3.4 | 58 | 81 | 10 | 39 | 2.3 | 0 | -27.7 | -0.08 | 0.11 |
| 208409 | 2/22/15 | PB | | 12 | 0.29 | 0.56 | 0.53 | 0.52 | 0.29 | | 0.22 | 0.17 | 0.31 | 0.14 | 0.26 |
| RED | POLLED | | | DLCC ADMIRAL 12A | | | | DLCC MAMMY 46A | | | | | | | |
| LEAH GIESS PIERZ MN | | | | DIAMOND PLUS CATTLE GACKLE ND | | | | | | | | | | | |
| DLCC CHECKERS 12C | | | | 6 | 8.8 | 0.1 | 53 | 80 | 12 | 38 | 4.7 | 0.2 | -20.0 | -0.09 | 0.07 |
| 208860 | 3/17/15 | FB | | 28 | 0.51 | 0.62 | 0.60 | 0.57 | 0.29 | | 0.28 | 0.40 | 0.44 | 0.33 | 0.40 |
| RED | POLLED | | | DLCC ADMIRAL 12A | | | | DLCC POPPY 108Z | | | | | | | |
| LEAH GIESS PIERZ MN | | | | R P FARMS SWANVILLE MN | | | | | | | | | | | |
| DLCC COPY CAT 69C | | | | 7 | 10.0 | 0.5 | 61 | 98 | 8 | 38 | 2.7 | 0.1 | -10.0 | -0.09 | 0.07 |
| 208807 | 4/9/15 | FB | | 44 | 0.40 | 0.64 | 0.60 | 0.61 | 0.39 | | 0.30 | 0.31 | 0.39 | 0.25 | 0.35 |
| BLK | POLLED | | | DLCC DODGE CITY 78Y | | | | DLCC TOPAZ 20Y | | | | | | | |
| DLCC RANCH PIERZ MN | | | | LEACHMAN CATTLE OF CO FT COLLINS CO; DLCC RANCH PIERZ MN | | | | | | | | | | | |
| DLCC COWBOY JO 81C | | | | 13 | 14.5 | -1.8 | 55 | 85 | 9 | 36 | 4.8 | -0.1 | -7.8 | -0.05 | 0.06 |
| 208816 | 4/21/15 | FB | | 28 | 0.58 | 0.69 | 0.64 | 0.66 | 0.35 | | 0.32 | 0.45 | 0.47 | 0.35 | 0.41 |
| RED | POLLED | | | DLCC DODGE CITY 78Y | | | | DLCC KATARINA 67Z | | | | | | | |
| DLCC RANCH PIERZ MN | | | | LEACHMAN CATTLE OF CO FT COLLINS CO; DLCC RANCH PIERZ MN | | | | | | | | | | | |
| DLCC CROSSFIRE 67C | | | | 1 | 8.4 | 2.4 | 75 | 111 | 18 | 55 | 3.4 | 0.1 | 11.3 | -0.09 | 0.16 |
| 208406 | 4/9/15 | FB | | 24 | 0.29 | 0.59 | 0.55 | 0.58 | 0.36 | | 0.26 | 0.17 | 0.33 | 0.14 | 0.25 |
| RED | POLLED | | | DLCC DODGE CITY 78Y | | | | DLCC CLAIRE 50W | | | | | | | |
| LANE GIESS PIERZ MN | | | | DAHL LAND & CATTLE CO GACKLE ND; DLCC RANCH PIERZ MN | | | | | | | | | | | |
| DLCC DEBUT 88D | | | | 3 | 11.8 | -0.7 | 71 | 101 | -6 | 30 | 2.9 | 0.4 | -1.5 | -0.09 | -0.12 |
| 210912 | 4/12/16 | FB | | 35 | 0.55 | 0.74 | 0.70 | 0.70 | 0.39 | | 0.38 | 0.48 | 0.52 | 0.37 | 0.47 |
| BLK | POLLED | | | DLCC DODGE CITY 78Y | | | | DLCC BINDI 71X | | | | | | | |
| DLCC RANCH PIERZ MN | | | | DLCC RANCH PIERZ MN | | | | | | | | | | | |
| DLCC DERBY 64D | | | | 8 | 6.4 | 2.3 | 53 | 55 | -1 | 25 | 1.9 | 0.1 | -39.0 | -0.09 | 0.01 |
| 210507 | 4/2/16 | FB | | 33 | 0.55 | 0.75 | 0.67 | 0.69 | 0.42 | | 0.36 | 0.40 | 0.49 | 0.33 | 0.43 |
| RED | POLLED | | | DLCC DODGE CITY 78Y | | | | DLCC TOPAZ 20Y | | | | | | | |
| DLCC RANCH PIERZ MN | | | | DLCC RANCH PIERZ MN; DON & LINDA HARVEY ARBELA MO | | | | | | | | | | | |
| DLCC DODGE CITY 78Y | | | | 12 | 10.6 | 0.4 | 68 | 100 | 1 | 35 | 3.7 | 0.2 | 2.0 | -0.07 | 0 |
| 200720 | 4/22/11 | PB | | 110 | 0.54 | 0.76 | 0.72 | 0.72 | 0.55 | | 0.42 | 0.45 | 0.52 | 0.38 | 0.45 |
| BLK | POLLED | | | SBCC WOMANIZER 9137 | | | | DLCC PERFECT ENUF 28W | | | | | | | |
| LANE GIESS PIERZ MN | | | | DLCC RANCH PIERZ MN; LEACHMAN CATTLE OF CO FT COLLINS CO | | | | | | | | | | | |
| DLCC DURANGO 26Z | | | | 5 | 7.3 | 2.0 | 59 | 101 | 26 | 56 | 0.5 | 0 | -13.7 | -0.10 | 0.55 |
| 202828 | 3/30/12 | PB | | 10 | 0.37 | 0.61 | 0.56 | 0.56 | 0.32 | | 0.27 | 0.29 | 0.38 | 0.24 | 0.34 |
| BLK | POLLED | | | DLCC SHUR LOC 99W | | | | DLCC MANDI 55U | | | | | | | |
| DLCC RANCH PIERZ MN | | | | DLCC RANCH PIERZ MN; WATINGA WILLALOOKA AUSTRALIA; LEACHMAN CATTLE OF COLORADO WELLINGTON CO; NICHOLS FARMS LTD BRIDGEWATER IA | | | | | | | | | | | |
| DLCC ENERGIZER 87E | | | | 1 | 3.3 | 2.1 | 60 | 82 | 11 | 41 | -0.1 | 0.1 | -21.7 | -0.08 | -0.15 |
| 213025 | 4/9/17 | FB | | 16 | 0.48 | 0.57 | 0.52 | 0.52 | 0.24 | | 0.25 | 0.33 | 0.42 | 0.29 | 0.37 |
| RED | POLLED | | | DLCC MANHATTAN 33Z | | | | DLCC POPPY 108Z | | | | | | | |
| LEAH GIESS PIERZ MN | | | | KNN FARMS BAY CITY WI; DLCC RANCH PIERZ MN | | | | | | | | | | | |
| DLCC FATE 56F | | | | 4 | 9.3 | -0.1 | 68 | 103 | 7 | 41 | 1.8 | 0.1 | -14.5 | -0.08 | -0.31 |
| 214816 | 3/25/18 | PB | | 5 | 0.53 | 0.59 | 0.54 | 0.54 | 0.30 | | 0.31 | 0.42 | 0.45 | 0.36 | 0.42 |
| RED | POLLED | | | DLCC DODGE CITY 78Y | | | | DLCC FANCY PANTS 103Y | | | | | | | |
| DLCC RANCH PIERZ MN | | | | SCOTCHLANDS FARM ARMSTRONG BC BC; NINE MILE RANCH WALLA WALLA WA; DLCC RANCH PIERZ MN | | | | | | | | | | | |
| DLCC GOLD DUST 64G | | | | 8 | 7.5 | 2.5 | 91 | 139 | 11 | 56 | 2.0 | 0.6 | 20.4 | -0.07 | 0.47 |
| 216262 | 3/29/19 | FB | | 2 | 0.52 | 0.72 | 0.67 | 0.66 | 0.22 | | 0.28 | 0.51 | 0.55 | 0.45 | 0.50 |
| BLK | POLLED | | | DLCC DEBUT 88D | | | | DLCC LOOP 19B | | | | | | | |
| DLCC RANCH PIERZ MN | | | | DLCC RANCH PIERZ MN | | | | | | | | | | | |
| DLCC GOLD MEDAL 104G | | | | 2 | 9.9 | 0.5 | 68 | 105 | 16 | 49 | 2.2 | 0 | -2.7 | -0.08 | -0.30 |
| 216296 | 4/16/19 | FB | | 5 | 0.52 | 0.60 | 0.57 | 0.56 | 0.28 | | 0.27 | 0.38 | 0.50 | 0.33 | 0.42 |
| BLK | POLLED | | | DLCC EVEREST 50E | | | | DLCC CLAIRE 12B | | | | | | | |
| LANE GIESS PIERZ MN | | | | R P FARMS SWANVILLE MN; DLCC RANCH PIERZ MN | | | | | | | | | | | |

2024 SIRE SUMMARY - MAIN LISTING

| Name | DOB | % | #Herds | CED | BW | WW | YW | Milk | MWW | CEM | Marb | CW | Fat | REA |
|--------------------------------------|---------|----|---|-------------|-------------|-----------|--------------------------|-----------|-----------|-------------|-------------|--------------|--------------|--------------|
| Reg# | Color | | #Dcalves | Acc | Acc | Acc | Acc | Acc | Acc | Acc | Acc | Acc | Acc | Acc |
| Breeder | H/P/S | | Sire | | | | Dam | | | | | | | |
| Owner(s) | | | | | | | | | | | | | | |
| DLCC GRANDEUR 42G | | | 4 | 15.3 | -1.7 | 67 | 109 | 17 | 51 | 5.2 | -0.1 | -5.1 | -0.07 | -0.10 |
| 216237 | 3/25/19 | FB | 2 | 0.49 | 0.60 | 0.55 | 0.56 | 0.20 | | 0.23 | 0.39 | 0.42 | 0.32 | 0.38 |
| RED | POLLED | | DLCC COWBOY JO 81C | | | | DLCC PERFECT 9A | | | | | | | |
| DLCC RANCH PIERZ MN | | | CARROLL & CAROLE NELSON BIG TIMBER MT; DLCC RANCH PIERZ MN | | | | | | | | | | | |
| DLCC HOMESTEADER 140H | | | 2 | 12.7 | -1.9 | 49 | 71 | 7 | 32 | 2.3 | -0.1 | -24.6 | -0.07 | -0.07 |
| 217737 | 5/5/20 | FB | 0 | 0.46 | 0.53 | 0.48 | 0.49 | 0.23 | | 0.27 | 0.37 | 0.42 | 0.32 | 0.39 |
| BLK | POLLED | | DLCC DEBUT 88D | | | | DLCC BELINDA 14B | | | | | | | |
| DLCC RANCH PIERZ MN | | | 9-R RANCH GOODLAND MN; DLCC RANCH PIERZ MN | | | | | | | | | | | |
| DLCC HOO DOO 26H | | | 2 | 8.9 | -0.5 | 51 | 79 | 14 | 39 | 2.3 | -0.2 | -30.9 | -0.08 | 0.09 |
| 217633 | 3/16/20 | FB | 0 | 0.50 | 0.60 | 0.54 | 0.53 | 0.16 | | 0.23 | 0.35 | 0.41 | 0.29 | 0.39 |
| RED | POLLED | | MD EFFORTLESS 2E | | | | DLCC PUNCH 11F | | | | | | | |
| DLCC RANCH PIERZ MN | | | DLCC RANCH PIERZ MN | | | | | | | | | | | |
| DLCC PATRIOT 51Y | | | 13 | 9.1 | 1.1 | 57 | 79 | 17 | 46 | 3.9 | -0.3 | -18.2 | -0.11 | 0.48 |
| 200723 | 4/4/11 | PB | 53 | 0.36 | 0.63 | 0.60 | 0.59 | 0.40 | | 0.32 | 0.26 | 0.35 | 0.20 | 0.32 |
| RED | POLLED | | DLCC SHUR LOC 99W | | | | DLCC GEMMA 104W | | | | | | | |
| LANE GIESS PIERZ MN | | | MJB RANCH LODGE GRASS MT | | | | | | | | | | | |
| DLCC SHUR LOC 99W | | | 27 | 6.7 | 2.6 | 52 | 81 | 9 | 36 | 0 | -0.2 | -22.9 | -0.11 | 0.29 |
| 196653 | 4/14/09 | | 200 | 0.60 | 0.80 | 0.75 | 0.74 | 0.59 | | 0.45 | 0.63 | 0.62 | 0.49 | 0.58 |
| BLK | POLLED | | MJB SHUR LOC 106S | | | | VPG KEYSHA 047K | | | | | | | |
| DLCC RANCH PIERZ MN | | | DLCC RANCH PIERZ MN; LEACHMAN CATTLE OF CO FT COLLINS CO | | | | | | | | | | | |
| DLCC STOCKMAN 39C | | | 7 | 9.0 | 0.7 | 83 | 125 | 5 | 47 | 5.4 | -0.2 | 8.7 | -0.09 | 0.47 |
| 207902 | 3/27/15 | PB | 19 | 0.39 | 0.60 | 0.57 | 0.58 | 0.32 | | 0.28 | 0.32 | 0.41 | 0.27 | 0.35 |
| BLK | POLLED | | MMM UNTOUCHABLE W810 | | | | DLCC PROMISE 40U | | | | | | | |
| DLCC RANCH PIERZ MN | | | DLCC RANCH PIERZ MN; JARED MUMM COMMERCE TX; MISSOURI COTEAU CATTLE CO CRANE VALLEY SK CANADA | | | | | | | | | | | |
| DLCC SURE THING 34P | | | 9 | 8.2 | 0.3 | 61 | 94 | 16 | 46 | -1.4 | 0.1 | -15.6 | -0.07 | -0.13 |
| 181632 | 4/1/04 | | 120 | 0.52 | 0.70 | 0.63 | 0.65 | 0.57 | | 0.46 | 0.42 | 0.51 | 0.37 | 0.47 |
| BLK | POLLED | | DLCC SURE-ENUF | | | | DLCC PERFECT ENUF 4M | | | | | | | |
| DLCC RANCH PIERZ MN | | | DLCC RANCH PIERZ MN | | | | | | | | | | | |
| DLCC SURE-ENUF | | | 35 | 12.2 | -1.9 | 43 | 69 | 15 | 37 | 3.3 | -0.2 | -44.0 | -0.13 | 0.24 |
| 174528 | 5/6/02 | FB | 606 | 0.73 | 0.87 | 0.80 | 0.81 | 0.77 | | 0.65 | 0.69 | 0.73 | 0.63 | 0.68 |
| BLK | POLLED | | DLCC BLACK ENUF 127J | | | | DLCC MANDI 18K | | | | | | | |
| DLCC RANCH PIERZ MN | | | R P FARMS SWANVILLE MN; MJB RANCH LODGE GRASS MT; DLCC RANCH PIERZ MN | | | | | | | | | | | |
| DLCC TWO STEP 84B | | | 13 | 2.5 | 4.4 | 70 | 105 | 14 | 49 | -6.2 | -0.5 | -22.8 | -0.13 | 0.63 |
| 205508 | 5/12/14 | PB | 59 | 0.32 | 0.62 | 0.59 | 0.59 | 0.39 | | 0.24 | 0.24 | 0.37 | 0.21 | 0.33 |
| RED | POLLED | | DLCC SHUR LOC 99W | | | | DLCC DANCER 141T | | | | | | | |
| LANE GIESS PIERZ MN | | | DLCC RANCH PIERZ MN | | | | | | | | | | | |
| DPC DALLAS PROGRESS D302 | | | 1 | 5.0 | 3.1 | 70 | 117 | 16 | 50 | 0.1 | -0.3 | -4.7 | -0.12 | 0.50 |
| 212318 | 2/28/16 | FB | 2 | 0.24 | 0.53 | 0.52 | 0.48 | 0.24 | | 0.20 | 0.15 | 0.26 | 0.14 | 0.23 |
| RED | POLLED | | BC PROGRESS 315U | | | | COTEAU DALLAS SKY A812 | | | | | | | |
| DIAMOND PLUS CATTLE GACKLE ND | | | DIAMOND PLUS CATTLE GACKLE ND | | | | | | | | | | | |
| DPC DALLAS SKYLINE D812 | | | 1 | 8.4 | 1.3 | 48 | 71 | 10 | 34 | -1.0 | -0.4 | -11.8 | -0.11 | 0.55 |
| 212279 | 2/26/16 | FB | 0 | 0.22 | 0.52 | 0.51 | 0.47 | 0.21 | | 0.17 | 0.07 | 0.23 | 0.06 | 0.17 |
| RED | POLLED | | LJB T. C. DALLAS | | | | COTEAU SKYLINE U612 | | | | | | | |
| DIAMOND PLUS CATTLE GACKLE ND | | | DIAMOND PLUS CATTLE GACKLE ND | | | | | | | | | | | |
| EBS ELKER 1121 642A | | | 1 | 9.4 | 2.3 | 53 | 73 | 0 | 26 | 2.6 | -0.2 | -31.2 | -0.10 | 0.26 |
| 203524 | 3/3/13 | FB | 34 | 0.25 | 0.56 | 0.48 | 0.51 | 0.26 | | 0.23 | 0.18 | 0.31 | 0.14 | 0.29 |
| RED | POLLED | | DLC LEGACY 1121 | | | | EBS IDA 507T | | | | | | | |
| ELKINGTON BROS & SONS IDAHO FALLS ID | | | ELKINGTON BROS & SONS IDAHO FALLS ID | | | | | | | | | | | |
| EBS ELKER MACHINE 419E | | | 1 | 10.1 | 2.0 | 67 | 102 | 0 | 34 | 3.3 | -0.2 | -17.3 | -0.10 | 0.34 |
| 214269 | 3/7/17 | FB | 10 | 0.27 | 0.54 | 0.45 | 0.48 | 0.20 | | 0.21 | 0.18 | 0.32 | 0.14 | 0.25 |
| RED | POLLED | | EBS ELKER 1121 642A | | | | EBS MISS ELKER 1121 880B | | | | | | | |
| ELKINGTON BROS & SONS IDAHO FALLS ID | | | ELKINGTON BROS & SONS IDAHO FALLS ID | | | | | | | | | | | |
| GUM HILL RED 530 | | | 9 | 10.2 | 3.2 | 57 | 81 | 11 | 40 | 6.0 | -0.4 | -3.2 | -0.12 | 0.11 |
| 208776 | 3/17/09 | FB | 74 | 0.33 | 0.61 | 0.57 | 0.59 | 0.40 | | 0.27 | 0.23 | 0.35 | 0.17 | 0.27 |
| RED | POLLED | | GUM HILL B41 | | | | GUM HILL Y046 | | | | | | | |

2024 SIRE SUMMARY - MAIN LISTING

| Name | Reg# | DOB | % | #Herds | CED | BW | WW | YW | Milk | MWW | CEM | Marb | CW | Fat | REA |
|---------------------------------|---------|---------|----|----------------------|-------------|-------------|-----------|---|-----------|-----------|-------------|-------------|--------------|--------------|-------------|
| | | | | #Dcalves | Acc | Acc | Acc | Acc | Acc | | Acc | Acc | Acc | Acc | Acc |
| | Color | H/P/S | | Sire | | | | Dam | | | | | | | |
| | Breeder | | | | | | | Owner(s) | | | | | | | |
| HS E PLURBIS UNUM | | | | 14 | 9.7 | 0.6 | 47 | 72 | 14 | 37 | -2.2 | -0.3 | -24.4 | -0.1 | 0.38 |
| 190982 | | 1/4/07 | | 28 | 0.29 | 0.56 | 0.46 | 0.43 | 0.32 | | 0.27 | 0.11 | 0.26 | 0.07 | 0.22 |
| RED | | SCURRED | | DLC ROYAL LAD 21 | | | | MJB PRIMA 7506G | | | | | | | |
| THREE CEDARS FARM DENMARK TN | | | | | | | | SHOWBOAT CATTLE CO WINCHESTER KS; TENNESSEE RIVER MUSIC INC FT PAYNE AL; JVM CATTLE COMPANY PELLA IA; | | | | | | | |
| JVM EASTON 750E | | | | 19 | 9.0 | 0.3 | 54 | 83 | 10 | 37 | -1.2 | -0.2 | -22.9 | -0.09 | 0.45 |
| 211759 | | 4/28/17 | FB | 11 | 0.54 | 0.65 | 0.57 | 0.54 | 0.14 | | 0.26 | 0.37 | 0.39 | 0.32 | 0.40 |
| BLK | | POLLED | | HILL CREST 465B | | | | JVM ZELLA 203Z | | | | | | | |
| JVM CATTLE COMPANY PELLA IA | | | | | | | | JVM CATTLE COMPANY PELLA IA | | | | | | | |
| JVM EDGE 753E | | | | 4 | 7.4 | 2.5 | 56 | 84 | 19 | 47 | -0.2 | -0.3 | -5.9 | -0.08 | 0.47 |
| 213244 | | 3/12/17 | PB | 17 | 0.46 | 0.50 | 0.48 | 0.48 | 0.20 | | 0.19 | 0.28 | 0.36 | 0.26 | 0.34 |
| BLK | | POLLED | | JVM ZEKE 252Z | | | | TLC NAVY 1889B | | | | | | | |
| JVM CATTLE COMPANY PELLA IA | | | | | | | | LANCE A BRANTNER ELLSWORTH WI | | | | | | | |
| JVM FLYNN 853F | | | | 2 | 12.5 | 0.4 | 60 | 90 | 29 | 59 | 5.7 | -0.2 | 11.7 | -0.09 | 0.60 |
| 214382 | | 3/20/18 | PB | 5 | 0.49 | 0.61 | 0.56 | 0.56 | 0.18 | | 0.21 | 0.35 | 0.41 | 0.30 | 0.35 |
| BLK | | POLLED | | MJB DILLON 689D | | | | TLC NAVY 2019B | | | | | | | |
| JVM CATTLE COMPANY PELLA IA | | | | | | | | JVM CATTLE COMPANY PELLA IA | | | | | | | |
| JVM ZEKE 252Z | | | | 8 | 8.9 | 0.6 | 44 | 65 | 13 | 35 | -0.7 | -0.2 | -19.0 | -0.10 | 0.47 |
| 202601 | | 5/4/12 | PB | 27 | 0.32 | 0.55 | 0.47 | 0.43 | 0.26 | | 0.21 | 0.11 | 0.26 | 0.09 | 0.28 |
| RED | | POLLED | | HS E PLURBIS UNUM | | | | MAPLE LEAF IRIS IIN | | | | | | | |
| JVM CATTLE COMPANY PELLA IA | | | | | | | | JVM CATTLE COMPANY PELLA IA | | | | | | | |
| KNN ALL-IN 1H | | | | 3 | 11.1 | -1.9 | 41 | 58 | 16 | 36 | 2.5 | -0.2 | -34.0 | -0.11 | 0.18 |
| 217434 | | 2/12/20 | FB | 0 | 0.49 | 0.58 | 0.52 | 0.50 | 0.09 | | 0.22 | 0.32 | 0.35 | 0.28 | 0.33 |
| BLK | | POLLED | | JVM EASTON 750E | | | | KNN KEA 2F | | | | | | | |
| KNN FARMS BAY CITY WI | | | | | | | | DLCC RANCH PIERZ MN; KNN FARMS BAY CITY WI | | | | | | | |
| KNN FINAL DRAFT 2H | | | | 3 | 14.8 | -3.2 | 41 | 63 | 16 | 36 | 4.6 | -0.2 | -27.2 | -0.08 | 0.28 |
| 217435 | | 2/14/20 | FB | 0 | 0.44 | 0.50 | 0.45 | 0.44 | 0.10 | | 0.20 | 0.31 | 0.35 | 0.27 | 0.33 |
| RED | | POLLED | | JVM EASTON 750E | | | | KNN IKEA 3F | | | | | | | |
| KNN FARMS BAY CITY WI | | | | | | | | KNN FARMS BAY CITY WI | | | | | | | |
| KNN KENO 28S | | | | 8 | 11.3 | 3.1 | 46 | 71 | 20 | 43 | 4.7 | -0.2 | -17.5 | -0.12 | 0.29 |
| 188557 | | 5/15/06 | PB | 31 | 0.24 | 0.55 | 0.45 | 0.41 | 0.30 | | 0.20 | 0.11 | 0.19 | 0.10 | 0.18 |
| RED | | POLLED | | RSC GLACIER 108 | | | | DLCC KEYSHA 15IN | | | | | | | |
| KNN FARMS BAY CITY WI | | | | | | | | KNN FARMS BAY CITY WI | | | | | | | |
| KNN MARSHALL 8G | | | | 2 | 11.0 | 2.0 | 43 | 60 | 12 | 33 | 3.7 | -0.4 | -12.3 | -0.11 | 0.45 |
| 215372 | | 3/18/19 | FB | 0 | 0.45 | 0.51 | 0.47 | 0.46 | 0.16 | | 0.23 | 0.33 | 0.39 | 0.29 | 0.36 |
| RED | | POLLED | | KNN MIDWEST 20D | | | | KNN KIZA 3Z | | | | | | | |
| KNN FARMS BAY CITY WI | | | | | | | | KNN FARMS BAY CITY WI | | | | | | | |
| KNN RANGER 37T | | | | 8 | 11.1 | -2.3 | 34 | 50 | 16 | 33 | 8.1 | -0.1 | -24.9 | -0.10 | 0.02 |
| 193165 | | 5/17/07 | PB | 127 | 0.41 | 0.68 | 0.62 | 0.60 | 0.45 | | 0.33 | 0.13 | 0.33 | 0.08 | 0.29 |
| BLK | | POLLED | | DLCC OPEN RANGE 3R | | | | KNN RUBEE DANCER 25R | | | | | | | |
| KNN FARMS BAY CITY WI | | | | | | | | KNN FARMS BAY CITY WI | | | | | | | |
| KNN UNDENIED 4H | | | | 2 | 10.3 | 0.4 | 63 | 92 | 15 | 46 | 4.4 | -0.3 | 1.2 | -0.10 | 0.40 |
| 217428 | | 3/1/20 | FB | 0 | 0.46 | 0.50 | 0.47 | 0.47 | 0.20 | | 0.26 | 0.34 | 0.39 | 0.31 | 0.38 |
| BLK | | POLLED | | MMM UNTOUCHABLE W810 | | | | KNN KEYZ 9E | | | | | | | |
| KNN FARMS BAY CITY WI | | | | | | | | KNN FARMS BAY CITY WI | | | | | | | |
| L-7 461Z | | | | 11 | 4.7 | 6.2 | 64 | 93 | 13 | 44 | -4.6 | -0.1 | -22.9 | -0.12 | 0.26 |
| 113890 | | 4/5/90 | FB | 465 | 0.39 | 0.79 | 0.72 | 0.73 | 0.65 | | 0.52 | 0.29 | 0.39 | 0.22 | 0.35 |
| RED | | HORNED | | PMS MR UNIVERSE 137U | | | | PMS MISS IDAHO GEM 104U | | | | | | | |
| PAUL M SIEVERT RIVER FOREST IL | | | | | | | | LEO MCDONNELL JR COLUMBUS MT; MJB RANCH LODGE GRASS MT | | | | | | | |
| LEACHMAN BLK MARBLE 913A | | | | 9 | 7.4 | 5.2 | 52 | 71 | 13 | 39 | 4.7 | -0.3 | -22.5 | -0.11 | 0.24 |
| 116117 | | 4/2/91 | PB | 66 | 0.34 | 0.68 | 0.63 | 0.64 | 0.46 | | 0.34 | 0.19 | 0.28 | 0.14 | 0.24 |
| BLK | | POLLED | | CHR 9S | | | | MISS PICK 224P | | | | | | | |
| LEACHMAN CATTLE CO BILLINGS MT | | | | | | | | LEACHMAN CATTLE CO BILLINGS MT | | | | | | | |
| LEACHMAN FULLCHARGE 907A | | | | 16 | 15.1 | 1.1 | 57 | 81 | 4 | 32 | 7.9 | -0.3 | -13.3 | -0.12 | 0.52 |
| 116114 | | 3/29/91 | FB | 595 | 0.54 | 0.84 | 0.80 | 0.81 | 0.72 | | 0.58 | 0.40 | 0.49 | 0.32 | 0.44 |
| RED | | POLLED | | LJB TURBO CHARGER | | | | LEACHMAN JH S859 | | | | | | | |
| LEACHMAN CATTLE CO BILLINGS MT | | | | | | | | LEACHMAN CATTLE CO BILLINGS MT; MJB RANCH LODGE GRASS MT | | | | | | | |

2024 SIRE SUMMARY - MAIN LISTING

| Name | Reg# | DOB | % | #Herds | CED | BW | WW | YW | Milk | MWW | CEM | Marb | CW | Fat | REA |
|------------------------------------|---------|-------|---|---|-------------|-------------|-----------|--------------------------|-----------|-----------|------------|-------------|--------------|--------------|-------------|
| | | | | #Dcalves | Acc | Acc | Acc | Acc | Acc | | Acc | Acc | Acc | Acc | Acc |
| | Color | H/P/S | | Sire | | | | Dam | | | | | | | |
| | Breeder | | | Owner(s) | | | | | | | | | | | |
| MD EFFORTLESS 2E | | | | 10 | 10.1 | -1.3 | 51 | 80 | 11 | 37 | 2.4 | -0.2 | -21.7 | -0.07 | 0.27 |
| 216095 | 3/27/17 | FB | | 9 | 0.45 | 0.59 | 0.52 | 0.53 | 0.24 | | 0.24 | 0.20 | 0.38 | 0.16 | 0.31 |
| RED | POLLED | | | DLCC COWBOY JO 81C | | | | KNN STRAWBERRY 38C | | | | | | | |
| MARVIN AND DENISE MUMM KIMBERLY ID | | | | MARVIN AND DENISE MUMM KIMBERLY ID; DLCC RANCH PIERZ MN; LONN CAMPBELL MCINTOSH SD | | | | | | | | | | | |
| MJB BLACK OUT 476B | | | | 2 | 7.7 | -0.6 | 69 | 111 | 14 | 49 | 0.8 | -0.1 | 14.2 | -0.09 | 0.48 |
| 205655 | 3/19/14 | FB | | 8 | 0.29 | 0.64 | 0.57 | 0.57 | 0.30 | | 0.28 | 0.25 | 0.35 | 0.17 | 0.29 |
| BLK | POLLED | | | MMM UNTOUCHABLE W810 | | | | MJB NIKKI 8613U | | | | | | | |
| MJB RANCH LODGE GRASS MT | | | | MJB RANCH LODGE GRASS MT | | | | | | | | | | | |
| MJB COOL 548C | | | | 2 | 8.7 | -0.3 | 58 | 88 | 19 | 48 | 0.9 | -0.2 | -6.8 | -0.10 | 0.57 |
| 208541 | 3/4/15 | FB | | 4 | 0.35 | 0.61 | 0.56 | 0.56 | 0.32 | | 0.27 | 0.26 | 0.36 | 0.20 | 0.31 |
| BLK | POLLED | | | MJB SWAGGER 330Z | | | | MJB NIKKI 8613U | | | | | | | |
| MJB RANCH LODGE GRASS MT | | | | MISSOURI COTEAU CATTLE CO CRANE VALLEY SK CANADA | | | | | | | | | | | |
| MJB DILLON 689D | | | | 7 | 9.4 | 2.5 | 72 | 115 | 25 | 61 | 5.1 | -0.1 | 12.3 | -0.10 | 0.63 |
| 209901 | 3/7/16 | FB | | 12 | 0.53 | 0.65 | 0.57 | 0.56 | 0.29 | | 0.30 | 0.38 | 0.45 | 0.32 | 0.41 |
| BLK | POLLED | | | MJB SWAGGER 330Z | | | | MJB YURI 1666Y | | | | | | | |
| MJB RANCH LODGE GRASS MT | | | | CIERA STEINLICHT VALLEY FALLS KS; JVM CATTLE COMPANY PELLA IA; MJB RANCH LODGE GRASS MT | | | | | | | | | | | |
| MJB EXTRA 77IE | | | | 2 | 5.3 | 0.6 | 62 | 106 | 12 | 43 | 1.0 | -0.3 | -0.1 | -0.12 | 0.65 |
| 212167 | 3/10/17 | FB | | 13 | 0.37 | 0.69 | 0.64 | 0.62 | 0.32 | | 0.31 | 0.33 | 0.39 | 0.27 | 0.34 |
| BLK | POLLED | | | MJB COUNTRY COOL 535C | | | | MJB NIKKI 8613U | | | | | | | |
| MJB RANCH LODGE GRASS MT | | | | MJB RANCH LODGE GRASS MT | | | | | | | | | | | |
| MJB PROGRESS 892F | | | | 1 | 7.3 | 1.1 | 78 | 130 | 22 | 61 | 2.9 | 0 | 11.2 | -0.08 | 0.18 |
| 213833 | 3/22/18 | PB | | 0 | 0.49 | 0.54 | 0.52 | 0.53 | 0.25 | | 0.28 | 0.42 | 0.43 | 0.38 | 0.42 |
| BLK | POLLED | | | BC PROGRESS 315U | | | | MJB PERFECT 0582X | | | | | | | |
| MJB RANCH LODGE GRASS MT | | | | MJB RANCH LODGE GRASS MT | | | | | | | | | | | |
| MJB SHUR LOC 106S | | | | 13 | 8.3 | 1.3 | 49 | 76 | 13 | 37 | 2.8 | 0 | -41.3 | -0.11 | 0.25 |
| 188977 | 1/24/06 | FB | | 162 | 0.48 | 0.75 | 0.69 | 0.71 | 0.56 | | 0.42 | 0.35 | 0.46 | 0.29 | 0.41 |
| RED | POLLED | | | DLCC SURE-ENUF | | | | MJB PROMISE 4550P | | | | | | | |
| MJB RANCH LODGE GRASS MT | | | | DLCC RANCH PIERZ MN; MJB RANCH LODGE GRASS MT | | | | | | | | | | | |
| MMM UNTOUCHABLE W810 | | | | 22 | 11.4 | -0.5 | 69 | 102 | 18 | 52 | 7.2 | -0.2 | 10.5 | -0.10 | 0.63 |
| 199405 | 8/27/09 | PB | | 368 | 0.66 | 0.84 | 0.80 | 0.80 | 0.67 | | 0.55 | 0.54 | 0.63 | 0.47 | 0.56 |
| BLK | POLLED | | | DLCC ASTOUND 48S | | | | BRANDY CREEK 68J | | | | | | | |
| TRIPLE M INCORPORATED CLINTON NC | | | | MJB RANCH LODGE GRASS MT; TRIPLE M INCORPORATED CLINTON NC | | | | | | | | | | | |
| NFL BLACK JACK DSD051 | | | | 1 | 10.9 | 1.4 | 67 | 107 | 19 | 52 | 5.0 | -0.2 | -11.5 | -0.14 | 0.66 |
| 210781 | 3/30/16 | FB | | 24 | 0.62 | 0.76 | 0.68 | 0.66 | 0.36 | | 0.34 | 0.60 | 0.61 | 0.53 | 0.58 |
| BLK | POLLED | | | MJB BLACK JACK 424B | | | | NFL CHELSEA DSB013 | | | | | | | |
| NICHOLS FARMS LTD BRIDGEWATER IA | | | | NICHOLS FARMS LTD BRIDGEWATER IA | | | | | | | | | | | |
| NFL PROGRESS DSB014 | | | | 3 | 7.9 | 1.6 | 83 | 132 | -3 | 39 | 8.2 | -0.3 | 11.7 | -0.11 | 0.20 |
| 206246 | 3/28/14 | PB | | 45 | 0.64 | 0.80 | 0.75 | 0.73 | 0.51 | | 0.46 | 0.67 | 0.68 | 0.59 | 0.65 |
| BLK | POLLED | | | BC PROGRESS 315U | | | | NICHOLS BEVERLY | | | | | | | |
| NICHOLS FARMS LTD BRIDGEWATER IA | | | | NICHOLS FARMS LTD BRIDGEWATER IA | | | | | | | | | | | |
| NFL UNTOUCHABLE DSC042 | | | | 1 | 10.5 | 0.9 | 70 | 110 | 16 | 51 | 6.0 | 0.1 | 3.3 | -0.09 | 0.13 |
| 208337 | 3/21/15 | FB | | 9 | 0.51 | 0.63 | 0.57 | 0.58 | 0.29 | | 0.30 | 0.34 | 0.44 | 0.28 | 0.39 |
| BLK | POLLED | | | MMM UNTOUCHABLE W810 | | | | NICHOLS PERFECTION Z909 | | | | | | | |
| NICHOLS FARMS LTD BRIDGEWATER IA | | | | NICHOLS FARMS LTD BRIDGEWATER IA | | | | | | | | | | | |
| NICHOLS BLACK JAC DSH024 | | | | 3 | 9.8 | 0.9 | 76 | 117 | 27 | 65 | 5.4 | -0.3 | -16.5 | -0.11 | 0.68 |
| 217505 | 3/21/20 | FB | | 0 | 0.41 | 0.54 | 0.49 | 0.50 | 0.19 | | 0.21 | 0.19 | 0.37 | 0.16 | 0.35 |
| BLK | POLLED | | | NFL BLACK JACK DSD051 | | | | MMM LADY B802 | | | | | | | |
| NICHOLS FARMS LTD BRIDGEWATER IA | | | | DLCC RANCH PIERZ MN | | | | | | | | | | | |
| NICHOLS DS DSG050 | | | | 1 | 8.8 | 2.9 | 61 | 90 | 32 | 62 | 5.4 | -0.3 | -11.4 | -0.10 | 0.14 |
| 215517 | 4/20/19 | FB | | 7 | 0.44 | 0.49 | 0.45 | 0.47 | 0.20 | | 0.21 | 0.33 | 0.38 | 0.29 | 0.35 |
| BLK | POLLED | | | NICHOLS DS A406 | | | | NICHOLS PERFECTION Z915 | | | | | | | |
| NICHOLS FARMS LTD BRIDGEWATER IA | | | | NICHOLS FARMS LTD BRIDGEWATER IA | | | | | | | | | | | |
| NICHOLS PROGRESS DSJ038 | | | | 1 | 6.3 | 2.7 | 93 | 147 | 14 | 61 | 4.5 | -0.1 | 26.8 | -0.08 | 0.62 |
| 219463 | 3/29/21 | PB | | 0 | 0.43 | 0.51 | 0.46 | 0.47 | 0.20 | | 0.22 | 0.38 | 0.40 | 0.32 | 0.36 |
| BLK | POLLED | | | NFL PROGRESS DSF030 | | | | NFL MISS UNIVERSE DSD090 | | | | | | | |
| NICHOLS FARMS LTD BRIDGEWATER IA | | | | MJB RANCH LODGE GRASS MT | | | | | | | | | | | |

2024 SIRE SUMMARY - MAIN LISTING

| Name | DOB | % | #Herds | CED | BW | WW | YW | Milk | MWW | CEM | Marb | CW | Fat | REA |
|---|---------|----|--|-------------|-------------|-----------|-----------------------|-----------|-----------|-------------|-------------|--------------|--------------|--------------|
| Reg# | | | #Dcalves | Acc | Acc | Acc | Acc | Acc | | Acc | Acc | Acc | Acc | Acc |
| Color | H/P/S | | Sire | | | | Dam | | | | | | | |
| Breeder | | | | | | | Owner(s) | | | | | | | |
| NICHOLS UNTOUCHABLE DSH019 | | | 2 | 5.9 | 2.4 | 87 | 131 | 18 | 61 | 3.1 | 0 | -3.1 | -0.08 | 0.48 |
| 217475 | 3/18/20 | PB | 0 | 0.54 | 0.69 | 0.55 | 0.55 | 0.18 | | 0.24 | 0.18 | 0.42 | 0.15 | 0.38 |
| BLK | POLLED | | NFL UNTOUCHABLE DSC042 | | | | NFL PERFECTION DSC069 | | | | | | | |
| NICHOLS FARMS LTD BRIDGEWATER IA | | | NICHOLS FARMS LTD BRIDGEWATER IA | | | | | | | | | | | |
| SR 8R | | | 2 | 4.2 | 4.4 | 63 | 81 | 12 | 43 | -2.9 | -0.3 | -25.7 | -0.13 | 0.35 |
| 11380 | 4/16/83 | FB | 21 | 0.21 | 0.56 | 0.53 | 0.54 | 0.32 | | 0.20 | 0.03 | 0.17 | 0.01 | 0.13 |
| MXD | HORNED | | MFL SUPER 4H | | | | MFL TULIP 4F | | | | | | | |
| FLYING TRIANGLE/SCHAFFER D. NORTH PLATTE NE | | | FLYING TRIANGLE/SCHAFFER D. NORTH PLATTE NE | | | | | | | | | | | |
| TC CASSANOVA 517C | | | 1 | 18.5 | -5.2 | 43 | 59 | 16 | 38 | 6.8 | -0.2 | -33.0 | -0.08 | 0.26 |
| 208380 | 2/13/15 | FB | 21 | 0.45 | 0.69 | 0.61 | 0.59 | 0.33 | | 0.28 | 0.36 | 0.44 | 0.30 | 0.41 |
| RED | POLLED | | CIMARRON FOREMOST 320A | | | | TC UDDERLY PERFECT | | | | | | | |
| TRIPLE CROWN SOUTH DEVON FARM RUSSELLVILLE MO | | | TRIPLE CROWN SOUTH DEVON FARM RUSSELLVILLE MO | | | | | | | | | | | |
| TC DESIGN 671D | | | 1 | 17.5 | 0.2 | 59 | 94 | 9 | 38 | 7.2 | -0.6 | -11.5 | -0.12 | 0.63 |
| 210646 | 4/5/16 | FB | 0 | 0.47 | 0.54 | 0.46 | 0.45 | 0.19 | | 0.21 | 0.34 | 0.39 | 0.31 | 0.36 |
| RED | POLLED | | TC BUCKAROO 412B | | | | TC ANN | | | | | | | |
| TRIPLE CROWN SOUTH DEVON FARM RUSSELLVILLE MO | | | RANDY SEIDEL LOHMAN MO | | | | | | | | | | | |
| TC DOMINO 662D | | | 1 | 15.1 | -2.1 | 53 | 73 | 18 | 44 | 4.8 | -0.1 | -28.5 | -0.08 | 0.19 |
| 210638 | 3/16/16 | FB | 0 | 0.48 | 0.57 | 0.48 | 0.48 | 0.18 | | 0.22 | 0.33 | 0.38 | 0.28 | 0.37 |
| RED | POLLED | | CIMARRON FOREMOST 320A | | | | TC ZONE | | | | | | | |
| TRIPLE CROWN SOUTH DEVON FARM RUSSELLVILLE MO | | | HF SEIDEL LOHMAN MO | | | | | | | | | | | |
| TC FABIO 823F | | | 1 | 8.2 | 3.6 | 71 | 113 | 3 | 39 | 3.1 | -0.4 | -15.3 | -0.11 | 0.70 |
| 214139 | 2/6/18 | FB | 5 | 0.27 | 0.58 | 0.51 | 0.50 | 0.21 | | 0.19 | 0.16 | 0.30 | 0.13 | 0.26 |
| RED | POLLED | | TC BUCKAROO 412B | | | | TC UPPER CRUST | | | | | | | |
| TRIPLE CROWN SOUTH DEVON FARM RUSSELLVILLE MO | | | TRIPLE CROWN SOUTH DEVON FARM RUSSELLVILLE MO | | | | | | | | | | | |
| TC JACKPOT 1109J | | | 1 | 3.7 | 4.2 | 62 | 95 | 21 | 52 | -1.7 | -0.1 | -18.5 | -0.10 | 0.51 |
| 218891 | 2/3/21 | FB | 0 | 0.51 | 0.55 | 0.52 | 0.51 | 0.30 | | 0.30 | 0.40 | 0.43 | 0.36 | 0.42 |
| RED | POLLED | | CIMARRON SUPERIOR 442 | | | | TC TINA | | | | | | | |
| TRIPLE CROWN SOUTH DEVON FARM RUSSELLVILLE MO | | | TRIPLE CROWN SOUTH DEVON FARM RUSSELLVILLE MO | | | | | | | | | | | |
| TC JACKSON 109J | | | 1 | 11.8 | 0.2 | 69 | 98 | 12 | 47 | 4.0 | -0.2 | -16.7 | -0.10 | 0.37 |
| 218534 | 2/5/21 | FB | 0 | 0.46 | 0.53 | 0.48 | 0.48 | 0.15 | | 0.20 | 0.28 | 0.36 | 0.26 | 0.34 |
| RED | SCURRED | | TC GUNSLINGER 922G | | | | CIMARRON CLIMAX 302A | | | | | | | |
| TRIPLE CROWN SOUTH DEVON FARM RUSSELLVILLE MO | | | TRIPLE CROWN SOUTH DEVON FARM RUSSELLVILLE MO | | | | | | | | | | | |
| TC JUSTICE 122J | | | 1 | 18.1 | -4.0 | 44 | 65 | 9 | 31 | 7.9 | -0.4 | -22.7 | -0.08 | 0.33 |
| 218540 | 2/13/21 | FB | 0 | 0.43 | 0.50 | 0.46 | 0.45 | 0.16 | | 0.20 | 0.34 | 0.37 | 0.30 | 0.36 |
| RED | POLLED | | TC CASSANOVA 517C | | | | TC GLAMOUR GIRL 919G | | | | | | | |
| TRIPLE CROWN SOUTH DEVON FARM RUSSELLVILLE MO | | | TRIPLE CROWN SOUTH DEVON FARM RUSSELLVILLE MO; HF SEIDEL LOHMAN MO | | | | | | | | | | | |
| TLC GENERAL PATTON | | | 4 | 10.3 | -1.3 | 48 | 76 | 18 | 42 | 2.1 | 0.1 | -22.3 | -0.05 | -0.15 |
| 209702 | 5/5/15 | FB | 0 | 0.44 | 0.49 | 0.47 | 0.47 | 0.18 | | 0.22 | 0.34 | 0.38 | 0.30 | 0.36 |
| BLK | POLLED | | DLCC ADMIRAL 12A | | | | TLC DAISY DUKE 3802 | | | | | | | |
| THOMPSON LAND & CATTLE CO. MOTLEY MN | | | THOMPSON LAND & CATTLE CO. MOTLEY MN | | | | | | | | | | | |
| TLC NEWT 945W | | | 2 | 9.6 | 0.7 | 56 | 85 | 29 | 57 | 2.2 | 0 | -6.4 | -0.09 | 0.18 |
| 201772 | 5/17/09 | PB | 42 | 0.28 | 0.56 | 0.46 | 0.49 | 0.36 | | 0.22 | 0.12 | 0.26 | 0.09 | 0.24 |
| BLK | POLLED | | TLC AUGUSTUS 22 | | | | TLC TANDI 645S | | | | | | | |
| THOMPSON LAND & CATTLE CO. MOTLEY MN | | | THOMPSON LAND & CATTLE CO. MOTLEY MN | | | | | | | | | | | |
| X-E DEPUTY D908 | | | 5 | 12.3 | 1.3 | 59 | 88 | 9 | 38 | 4.0 | -0.4 | -11.4 | -0.09 | 0.34 |
| 211556 | 2/7/16 | FB | 34 | 0.54 | 0.68 | 0.62 | 0.65 | 0.35 | | 0.27 | 0.41 | 0.44 | 0.33 | 0.36 |
| RED | POLLED | | GUM HILL RED 530 | | | | X-E MISS LEO W908 | | | | | | | |
| X-E STOCK RANCH MOSES LAKE WA | | | DLCC RANCH PIERZ MN | | | | | | | | | | | |

2024 SIRE SUMMARY - GENETIC INDICATOR LISTING

| Name | Reg# | DOB | % | #Herds | CED | BW | WW | YW | Milk | MWW | CEM | Marb | CW | Fat | REA |
|--------------------------------------|----------|-------|---|--|-------------|-------------|-----------|-------------------------|-----------|-----------|------------|-------------|--------------|--------------|--------------|
| | Color | H/P/S | | #Dcalves | Acc | Acc | Acc | Acc | Acc | | Acc | Acc | Acc | Acc | Acc |
| | Breeder | | | Sire | | | | Dam | | | | | | | |
| Owner(s) | | | | | | | | | | | | | | | |
| DLC BLACKFOOT 232G | | | | 1 | 12.7 | -1.0 | 45 | 76 | 26 | 49 | 7.5 | -0.1 | -13.9 | -0.10 | 0.16 |
| 216451 | 4/8/19 | FB | | 0 | 0.23 | 0.42 | 0.41 | 0.43 | 0.15 | | 0.16 | 0.05 | 0.21 | 0.04 | 0.15 |
| BLK | POLLED | | | DLC BLACK FOOT 307 | | | | DLC MS ROMEO 745 | | | | | | | |
| DAHL LAND & CATTLE CO GACKLE ND | | | | DAHL LAND & CATTLE CO GACKLE ND | | | | | | | | | | | |
| DLCC FURY 46F | | | | 1 | 13.1 | 0 | 53 | 83 | 13 | 39 | 5.3 | -0.1 | -12.6 | -0.09 | 0.18 |
| 214811 | 3/18/18 | FB | | 5 | 0.24 | 0.42 | 0.37 | 0.40 | 0.21 | | 0.17 | 0.17 | 0.24 | 0.13 | 0.21 |
| BLK | POLLED | | | DLCC COPY CAT 69C | | | | DLCC KATARINA 67Z | | | | | | | |
| DLCC RANCH PIERZ MN | | | | HIDDEN PARADISE RANCH EAU CLAIRE WI | | | | | | | | | | | |
| DLCC HARRISON 31H | | | | 1 | 12.2 | -1.0 | 82 | 133 | 14 | 55 | 7.0 | 0 | 17.6 | -0.08 | 0.60 |
| 217638 | 3/18/20 | FB | | 0 | 0.23 | 0.43 | 0.38 | 0.39 | 0.18 | | 0.16 | 0.16 | 0.24 | 0.14 | 0.20 |
| BLK | POLLED | | | DLCC STOCKMAN 39C | | | | RP CAVE 62C | | | | | | | |
| DLCC RANCH PIERZ MN | | | | KNN FARMS BAY CITY WI; VALLEY HILL FARM ELLSWORTH WI | | | | | | | | | | | |
| DPC MR ATOMIC F600 | | | | 1 | 6.9 | 2.7 | 48 | 75 | 15 | 39 | 0 | -0.2 | -21.2 | -0.11 | 0.39 |
| 215477 | 2/13/18 | FB | | 0 | 0.18 | 0.46 | 0.40 | 0.39 | 0.20 | | 0.14 | 0.07 | 0.20 | 0.06 | 0.12 |
| RED | POLLED | | | LEACHMAN ATOMIC 9360F | | | | DPC SHUR DREAM D900 | | | | | | | |
| DIAMOND PLUS CATTLE GACKLE ND | | | | DIAMOND PLUS CATTLE GACKLE ND | | | | | | | | | | | |
| EBS MISS ELKER 061H | | | | 1 | 8.4 | 2.8 | 67 | 101 | 13 | 47 | 1.9 | -0.2 | -18.5 | -0.10 | 0.32 |
| 217885 | 3/10/20 | FB | | 0 | 0.20 | 0.44 | 0.36 | 0.38 | 0.17 | | 0.15 | 0.14 | 0.28 | 0.13 | 0.23 |
| RED | POLLED | | | EBS ELKER MACHINE 419E | | | | EBS MISS ELKER 807B | | | | | | | |
| ELKINGTON BROS & SONS IDAHO FALLS ID | | | | ELKINGTON BROS & SONS IDAHO FALLS ID | | | | | | | | | | | |
| FC RENEGADE 5G | | | | 5 | 10.5 | 1.0 | 47 | 61 | 7 | 31 | 2.2 | -0.4 | -36.7 | -0.13 | 0.19 |
| 215376 | 4/19/19 | FB | | 1 | 0.43 | 0.51 | 0.44 | 0.43 | 0.14 | | 0.19 | 0.26 | 0.37 | 0.25 | 0.35 |
| RED | POLLED | | | KNN RENO 20E | | | | KNN 33B | | | | | | | |
| ABE AND RENEE FICK MAIDEN ROCK WI | | | | DLCC RANCH PIERZ MN; VALLEY HILL FARM ELLSWORTH WI | | | | | | | | | | | |
| JVM EGR HIGH ROLLER 076H | | | | 3 | 8.3 | 3.1 | 72 | 115 | 21 | 57 | 2.7 | -0.2 | 4.4 | -0.10 | 0.77 |
| 218114 | 10/26/20 | FB | | 0 | 0.36 | 0.41 | 0.38 | 0.37 | 0.10 | | 0.16 | 0.27 | 0.35 | 0.24 | 0.33 |
| BLK | POLLED | | | MJB DILLON 689D | | | | JVM EVE 702E | | | | | | | |
| JVM CATTLE COMPANY PELLA IA | | | | EMMA GNECH MALIN OR; JVM CATTLE COMPANY PELLA IA | | | | | | | | | | | |
| JVM JOHNNY CASH 150J | | | | 2 | 8.3 | 2.1 | 59 | 89 | 20 | 49 | 0.1 | -0.1 | -11.1 | -0.08 | 0.38 |
| 218924 | 2/25/21 | | | 0 | 0.21 | 0.48 | 0.39 | 0.35 | 0.09 | | 0.11 | 0.09 | 0.20 | 0.08 | 0.17 |
| BLK | POLLED | | | JVM EASTON 750E | | | | TLC BELLE 602D | | | | | | | |
| JVM CATTLE COMPANY PELLA IA | | | | JVM CATTLE COMPANY PELLA IA; DLCC RANCH PIERZ MN | | | | | | | | | | | |
| KNN FAIR-WARNING | | | | 2 | 9.9 | -0.1 | 50 | 72 | 12 | 37 | 3.2 | -0.3 | -28.3 | -0.11 | -0.03 |
| 217422 | 6/1/20 | FB | | 0 | 0.42 | 0.47 | 0.44 | 0.43 | 0.15 | | 0.20 | 0.28 | 0.36 | 0.26 | 0.33 |
| RED | POLLED | | | KNN RENO 20E | | | | KNN KEANA 52C | | | | | | | |
| KNN FARMS BAY CITY WI | | | | KNN FARMS BAY CITY WI | | | | | | | | | | | |
| KNN RIDGE 27H | | | | 1 | 9.3 | 1.6 | 52 | 66 | 14 | 40 | 3.8 | -0.3 | -26.3 | -0.13 | 0.18 |
| 217412 | 4/11/20 | FB | | 0 | 0.41 | 0.47 | 0.43 | 0.41 | 0.16 | | 0.19 | 0.27 | 0.33 | 0.24 | 0.32 |
| RED | POLLED | | | KNN RENO 20E | | | | KNN FLO 17A | | | | | | | |
| KNN FARMS BAY CITY WI | | | | KNN FARMS BAY CITY WI | | | | | | | | | | | |
| KNN WALKER 5G | | | | 1 | 8.7 | 1.8 | 64 | 104 | 18 | 50 | 4.1 | -0.1 | 5.6 | -0.10 | 0.32 |
| 215373 | 2/25/19 | | | 0 | 0.43 | 0.48 | 0.44 | 0.44 | 0.20 | | 0.24 | 0.33 | 0.36 | 0.29 | 0.34 |
| BLK | POLLED | | | MMM UNTOUCHABLE W810 | | | | KNN FEBE 1E | | | | | | | |
| KNN FARMS BAY CITY WI | | | | KNN FARMS BAY CITY WI | | | | | | | | | | | |
| MJB NFL 953G | | | | 2 | 9.3 | 1.0 | 76 | 119 | 13 | 51 | 5.7 | -0.2 | -4.6 | -0.10 | 0.30 |
| 216107 | 3/20/19 | FB | | 0 | 0.22 | 0.42 | 0.36 | 0.34 | 0.23 | | 0.19 | 0.18 | 0.23 | 0.16 | 0.21 |
| BLK | POLLED | | | NFL PROGRESS DSB014 | | | | MJB LADY 3658A | | | | | | | |
| MJB RANCH LODGE GRASS MT | | | | DOUBLE RL CATTLE COMPANY LLC RIDGWAY CO | | | | | | | | | | | |
| NICHOLS BLK JACK DSJ052 | | | | 1 | 8.6 | 2.3 | 75 | 119 | 27 | 64 | 4.4 | -0.2 | -7.8 | -0.12 | 0.82 |
| 219423 | 3/31/21 | FB | | 0 | 0.28 | 0.39 | 0.35 | 0.36 | 0.19 | | 0.18 | 0.18 | 0.29 | 0.16 | 0.25 |
| BLK | POLLED | | | NFL BLACK JACK DSD051 | | | | MMM LADY B802 | | | | | | | |
| NICHOLS FARMS LTD BRIDGEWATER IA | | | | NICHOLS FARMS LTD BRIDGEWATER IA | | | | | | | | | | | |
| NICHOLS UNTOUCHABLE DSJ037 | | | | 1 | 13.3 | 0.4 | 72 | 112 | 13 | 49 | 8.9 | -0.1 | 8.7 | -0.09 | 0.30 |
| 219420 | 3/27/21 | FB | | 0 | 0.38 | 0.47 | 0.43 | 0.43 | 0.15 | | 0.19 | 0.15 | 0.33 | 0.13 | 0.31 |
| BLK | POLLED | | | NFL UNTOUCHABLE DSC042 | | | | NFL BRANDY CREEK DSE030 | | | | | | | |
| NICHOLS FARMS LTD BRIDGEWATER IA | | | | NICHOLS FARMS LTD BRIDGEWATER IA | | | | | | | | | | | |

2024 SIRE SUMMARY - GENETIC INDICATOR LISTING

| Name | Reg# | DOB | % | #Herds | CED | BW | WW | YW | Milk | MWW | CEM | Marb | CW | Fat | REA |
|---|---------|---------|----|-----------------------|-------------|-------------|-----------|---|-----------|-----------|------------|-------------|--------------|--------------|-------------|
| | Color | H/P/S | | #Dcalves | Acc | Acc | Acc | Acc | Acc | | Acc | Acc | Acc | Acc | Acc |
| | Breeder | | | Sire | | | | Dam | | | | | | | |
| Owner(s) | | | | | | | | | | | | | | | |
| RP HONDO 5IH | | | | 2 | 12.3 | -0.5 | 61 | 93 | 17 | 47 | 4.2 | 0 | -2.9 | -0.06 | 0.17 |
| 217261 | | 3/5/20 | | 0 | 0.25 | 0.39 | 0.37 | 0.35 | 0.16 | | 0.15 | 0.14 | 0.22 | 0.12 | 0.20 |
| RED | | POLLED | | DLCC COWBOY JO 81C | | | | RP FLINT 02F | | | | | | | |
| R P FARMS SWANVILLE MN | | | | | | | | R P FARMS SWANVILLE MN | | | | | | | |
| TC GUNSLINGER 922G | | | | 1 | 10.8 | 1.4 | 75 | 114 | 2 | 40 | 4.2 | -0.5 | -13.7 | -0.12 | 0.63 |
| 215822 | | 2/5/19 | FB | 0 | 0.27 | 0.48 | 0.43 | 0.43 | 0.19 | | 0.17 | 0.16 | 0.27 | 0.14 | 0.26 |
| BLK | | POLLED | | TC BUCKAROO 412B | | | | TC SUSIE Q | | | | | | | |
| TRIPLE CROWN SOUTH DEVON FARM RUSSELLVILLE MO | | | | | | | | TRIPLE CROWN SOUTH DEVON FARM RUSSELLVILLE MO | | | | | | | |
| TC HE-MAN 11H | | | | 1 | 6.9 | 3.8 | 77 | 118 | 13 | 52 | 0.6 | -0.3 | -7.5 | -0.11 | 0.55 |
| 217009 | | 1/26/20 | FB | 0 | 0.19 | 0.45 | 0.39 | 0.36 | 0.15 | | 0.15 | 0.07 | 0.22 | 0.06 | 0.18 |
| RED | | POLLED | | TC FABIO 823F | | | | TC DREAMY 661D | | | | | | | |
| TRIPLE CROWN SOUTH DEVON FARM RUSSELLVILLE MO | | | | | | | | TRIPLE CROWN SOUTH DEVON FARM RUSSELLVILLE MO; TIM KAUFFMAN LOHMAN MO | | | | | | | |
| TC JOSEPH 107J | | | | 1 | 19.7 | -3.5 | 54 | 75 | 13 | 40 | 7.6 | -0.3 | -25.1 | -0.09 | 0.45 |
| 218645 | | 2/3/21 | FB | 0 | 0.42 | 0.47 | 0.43 | 0.43 | 0.16 | | 0.21 | 0.33 | 0.38 | 0.29 | 0.35 |
| RED | | POLLED | | TC CASSANOVA 517C | | | | TC GEM 934G | | | | | | | |
| TRIPLE CROWN SOUTH DEVON FARM RUSSELLVILLE MO | | | | | | | | TRIPLE CROWN SOUTH DEVON FARM RUSSELLVILLE MO | | | | | | | |
| TLC CROWN 920H | | | | 2 | 14.6 | -2.6 | 36 | 52 | 17 | 35 | 6.2 | -0.2 | -30.3 | -0.11 | 0.21 |
| 219546 | | 5/18/20 | | 0 | 0.21 | 0.49 | 0.39 | 0.36 | 0.11 | | 0.13 | 0.05 | 0.20 | 0.04 | 0.13 |
| RED | | POLLED | | TLC CROWN ROYAL 1023C | | | | TLC BEAUTY 920W | | | | | | | |
| THOMPSON LAND & CATTLE CO. MOTLEY MN | | | | | | | | DLCC RANCH PIERZ MN | | | | | | | |



K&M CATTLE
Simangus South Devon
Matt & Kindra Wayrynen
218-768-3367

McGregor, MN

The Backbone of Our Future

South Devon Juniors

ADVOCATES FOR THE BREED



2024 – Peyton Volkman, donated by C/N Ranch, Big Timber, MT



2023 – Dallas Hill, donated by 9 Mile Ranch, Kristin Dykes, Walla Walla, WA in memory of Josh Dykes



2022 – Connor Porath, donated by KNN Farms, Bay City, WI



2020 - Shelby Krebs, donated by Gnech Farms, Malin, OR



2019 - Levi Kramer, donated by Thompson Land & Cattle, Motley, MN



2018 - Adree Stapp, donated by DLCC Ranch, Pierz, MN & Scotchlans Farm, Armstrong, BC



2017 - Nicole Kibler, donated by Bar E Cattle, Clinton, NC



2016 - Wyatt Lawrence, donated by DLCC Ranch, Pierz, MN



2015 - Saavy Weimer, donated by Dahl Land & Cattle Company, Gackle, ND



2014 - Katelyn Horner, donated by JVM Cattle Company, Pella, IA



2013 - Jacob Allen, donated by MJB Ranch, Lodgegrass, MT

APPLICATIONS DUE NOV. 8, 2024

**Heifer will be presented at
the 2025 NWSS, Denver, CO**

2025 heifer is being donated by
HOXIE HILL FARMS
Mike Vanden Berg, Hammond, NY

Send applications to: tvandermolen22@yahoo.com

WWW.SOUTHDEVON.COM

2025 NASDA

Steer Profitability

COMPETITION

REQUIREMENTS

- Steers only
- Entrant must be a NASDA member
- Animals must be entered in the NASDA database
- Either sire or dam on file in the NASDA database
- Birthdate range: 1/15/24-4/15/24
- Weaning date range: 8/15/24-10/15/24
- Castration must occur prior to weaning
- Steers must weigh 500-750 lbs. at delivery
- Steers must be polled or dehorned
- Any breed composition welcome

CONTEST GUIDELINES

- Entry of \$65/head
- Feedlot placement approximately November 1
- All decisions at the discretion of the feedlot
- Harvest will occur approximately May 2025
- Entrant will receive reports on monthly feed and health
- Reports provided on final feedyard data and final carcass performance data

DETAILS

- All steers on GrowSafe feed intake system throughout the entire project
- Individual intake and gain information on all steers
- Monthly weights on all steers
- Steers will be fed at the University of Missouri Beef Research & Testing Farm in Columbia, MO
- Monthly bill detailing specific expenses on each steer

Register by October 15, 2024

WWW.SOUTHDEVON.COM

Or call 320-249-2130 for more information



Breed Leading Genetics

DLCC KOOPER 56K



- Balanced EPD profile
- Excels in overall eye appeal
- Use him to improve phenotype & performance

Homozygous Polled • Red • $\frac{3}{4}$ South Devon • $\frac{1}{4}$ Red Angus

NASDA #: 220629 • Birthdate: 3/16/2022

DLCC Fate 56F X CCM Montana Destiny D108

\$30/UNIT • SEMEN AVAILABLE FOR IMMEDIATE SHIPMENT



**2024 National Champion
Poundmaker Bull**



**2023 Reserve National Champion
Poundmaker Bull**



**CCM Montana Destiny D108
Dam of DLCC Kooper 56K**

C/N RANCH

Carroll Nelson
(406) 690-8731
cnelson@midrivers.com

HOXIE HILL FARMS

Mike Vanden Berg
(315) 744-4273
mapleallis@gmail.com

DLCC RANCH

Dar Giess
(320) 249-2130
dlccranch@outlook.com

32nd Annual Production Sale & Entire Fall Herd Dispersal

DLCC RANCH

SOUTH DEVONS | POUNDMAKERS | NAVIGATORS



DLCC Knock Em Over 243K || #220796 || 3/4 DS || STAY: 16 || YW: 95



DLCC Kabo 220K || #221810 || PB DS || STAY: 18 || YW: 71



DLCC K"Mon In 224K || #220642 || PB DS || WW: 70 || YW: 106



DLCC Genevieve 182G || #216354 || PB DS || STAY: 17 || CED: 12



DLCC H. H. Hannah 192H || #217779 || 5/8 DS || WW: 61 || YW: 96

April 20, 2024

1:00 PM CT - Pierz, MN

Selling 230 lots of South Devon and South Devon
designed composites.

100 Bulls | 130 Females

Breed-leading 18-month old bulls, yearling bulls, fall
bred cows, fall bred heifers, yearling open heifers.

Request a Catalog

www.DLCCRANCH.com

Dar Giess: (320)-249-2130 | Lane Giess: (320)-293-1647

NICHOLS SUPERIOR BEEF GENETICS

We've Come A Long Way Since 1998

The commercial market-place has responded! Real world cow/calf operations have found that Nichols South Devons' have delivered as promised and they are putting their money on them... It's because they have added heterosis, fertility, increased weaning weights and top prices at sale barns. Feedlots have realized feed efficiency, rate of gain and bottom line profits. Those who are selling "locker beef" have gained new customers because of their really good tasting, tender beef. We have and will continue to live up to our name to provide and deliver Superior South Devon Beef Genetics that add value from Conception to Consumer.



by dave nichols



NFL Untouchable F62 (214573) exceptional length of body and mass combined with his CE, Weaning wt, Scrotal, and Yearling wt EPDs. He's sound, moves like an athlete and tolerates Fescue pastures. His problem free daughters are Magnificent. Real Cowboys love him.

| BW | WW | YEAR | MILK | MWW |
|------|------|------|------|-----|
| +0.1 | +77 | +111 | +19 | +56 |
| CE | FAT | RE | MAR | CW |
| +13 | -.09 | +.54 | +.0 | +21 |

NFL Untouchable DSH019 (217475) is a Trait Leader for Wean and Year wt. He's average for Birth wt. *and in the top 33% for nine out of ten of all the other traits.* He's homo polled and black. His dam's "can't miss pedigree traces to Cimarron Rebel 941W and Double Doozie

| BW | WW | YEAR | MILK | MWW |
|------|------|------|------|------|
| +2.5 | +88 | +132 | +18 | +62 |
| CE | FAT | RE | MAR | CW |
| +5.8 | +.07 | +.47 | +.0 | -2.9 |



2188 Clay Avenue
Bridgewater, Iowa 50837

Nichols Farms
Superior Beef Genetics

office 641-369-2829
Cell 641-745-5241