

# SOUTH DEVON

R E V I E W



# NOW IS THE TIME

*to Build a Profitable and Efficient Cow Herd*



AT MJB, we believe great Herd Bulls come from great cows and that using great bulls is the best way to build a great cow herd. The following is a list of the prominent sires of our cow herd and the current crop of young bulls offered for sale – All of these bulls come from Hallmark Dams:

MJB Dillon 689D and 2 sons • MMM Untouchable W810 • NFL Progress DSB014

MJB Blackout 476B • NFL Progress DSE069 • MJB Cool 548C

Nichols Untouched DSG030 • MJB Extra 771E

The Hallmark Sire listing contains Sires of Multiple Hallmark Dams. At the top of the list is BC Progress 315U, who we bred and raised in our fall calving herd. There are 8 of the Top Ten sires of Hallmark Dams that have either seen significant service or were owned by MJB.

If you are ready to capitalize on the great sires we have used to build our cow herd, you have the opportunity to own some of these maternally efficient cows, as we are getting ready to slow down a bit. We have some fantastic heifers and young cows available that will be instrumental in building a profitable cow herd for your operation.



*Give us a call for more information on the bulls selling at Midland Bull Test on April 7, 2022, or to inquire about the females we have available.*

[www.MBJCATTLE.com](http://www.MBJCATTLE.com)

JIM AND MARY BROWN  
BOX 259  
LODGE GRASS, MONTANA 59050

JIM - (406) 679-0309 CELL  
MATT - (406) 679-1796 CELL



YOUR SOURCE FOR SOUTH DEVON GENETICS IN THE WEST

# Midland Bull Test

## THE FINAL SORT

**April 7, 2022**

*9 Age-Advantaged South Devon Bulls  
30 South Devon Yearling Bulls*



*2021 Champion High Efficiency Fall and Spring Bull • 2021 Champion ADG Bull • Champion WDA Bull • 2021 Champion Sire Group • 2021 World Champion Pen of 3  
MJB Ranch, Lodge Grass, MT*



*2021 Champion MBT High Indexing Fall Bull  
Stranberg Cattle Company, Maynard, MN*

Bulls are measured for Performance, Efficiency, Maternal and Carcass  
Semen Tested, Carcass Ultra-sounded, Screened for Soundness and Disposition  
BVD-PI Tested Negative, Tested for efficiency (RFI) and Feed Conversion

**MJB Ranch**  
Box 259  
Lodge Grass, MT 59050  
(406-679-0309)

**Stranberg Cattle  
Company**  
6085 70<sup>th</sup> Street SE  
Maynard, MN 56260  
(320) 894-7047

**Royal Beef Genetics**  
21321 State Hwy. 29  
Starbuck, MN 56381  
(320) 287-0751

**Thompson Land  
& Cattle Company**  
6629 100 Street SW  
Motley, MN 56466  
(801) 391-8989

# Advertiser Directory

|  |                       |
|--|-----------------------|
| Alumbaugh Farms.....                           | 57                    |
| Bar/ E Cattle Co.....                          | 57                    |
| C/N Ranch.....                                 | 31                    |
| Diamond Plus Cattle .....                      | 52                    |
| DLCC Ranch.....                                | 8 & Inside back cover |
| Elkington Polled Herefords & South Devon ..... | 31                    |
| Gnech Farms.....                               | 27                    |
| Hoxie Hill Farm.....                           | 57                    |
| JVM Cattle Company .....                       | 38                    |
| KNN Farms .....                                | 44                    |
| Valley Hill Farm & LAB Livestock .....         | 54                    |
| Midland Bull Test.....                         | 3                     |
| MJB Ranch .....                                | Inside front cover    |
| Nichols Farms.....                             | Back cover            |
| North American South Devon Association .....   | 58                    |
| NASDA Jr Association - Junior Nationals .....  | 11                    |
| Northern States South Devon Association .....  | 35                    |
| Popken South Devon .....                       | 43                    |
| Sadler Cattle Co. ....                         | 43                    |
| Thompson Land & Cattle .....                   | 55                    |
| Triple Crown South Devons.....                 | 54                    |
| Van Haur Family .....                          | 27                    |

## Staff

|                     |                |
|---------------------|----------------|
| Lynn Giess.....     | Editor         |
| Sherry Doubet ..... | NASDA Registry |

*Cover photo: Oakley Yarwood, Bay City, WI exhibits his heifer, KNN Katness 10H at the 2021 Iowa State Fair.*

*Editorial Design by Shannon Krueger, Allegro Creative, Abilene, Kansas*



@2022 North American South Devon Association. All rights reserved. Reproduction without permission from the North American South Devon Association is prohibited. The North American South Devon Association is not responsible for claims made by Advertisers in The South Devon Review. The North American South Devon Association is not responsible for unsolicited materials. Contributors are invited to submit photographs and manuscripts pertaining to South Devon cattle and their producers. Preference is given to material accompanied by photographs (300 dpi). All material and photographs are subject to editing and revisions.

Please send address changes to: North American South Devon Association, PO Box 850, Big Horn, WY 82833.

Published annually by the North American South Devon Association dedicated to the promotion and improvement of breeding, feeding and marketing South Devon cattle.



12



14

|                                 |    |
|---------------------------------|----|
| From the President.....         | 6  |
| 2022 Board of Directors .....   | 7  |
| Committee Appointments.....     | 7  |
| News & Notes .....              | 8  |
| In Remembrance .....            | 24 |
| Faces & Places .....            | 36 |
| 2022 Membership Directory ..... | 39 |
| 2022 Sire Summary.....          | 45 |

# Contents

|    |  |
|----|--|
| 12 | <b>Jallo Stock Farm</b><br>2022 Commercial Producer of the Year  |
| 14 | <b>Billie Culp</b><br>2022 Seedstock Producer of the Year  |
| 16 | <b>IGS Carcass EPD Updates</b><br>Adding valuable terminal records and genomic information to genetic evaluation |
| 19 | <b>Genetic Predictions</b><br>Seedstock producers' practices for getting accurate results                        |
| 20 | <b>Youth Heifer Recipient</b>  |
| 21 | <b>Iowa State Fair</b>   |
| 23 | <b>MN Beef Expo</b>  |
| 25 | <b>Junior Nationals</b>  |
| 28 | <b>48<sup>th</sup> National Show</b>   |
| 32 | <b>49<sup>th</sup> National Show</b>   |
| 35 | <b>Great Northern Livestock Exposition</b>   |

## Investing in Precision

In the past year, the North American South Devon Association producers have benefited from being a part of the International Genetic Solutions (IGS) database. We are able to offer seedstock and commercial producers the most accurate EPDs ever provided for our breed. As part of the largest beef cattle database in the world of nearly 19 million animals representing 17 different breed associations in the US, Canada and Australia, EPDs are now calculated weekly for our members. We also now have the availability of Genomic Enhanced EPDs for those animals having a 50K or greater genomic test on file.

To remain sustainable in the cattle industry, the role of South Devon producers, now and into the future is to provide all data to the association. In addition to providing birthweight, weaning weight and yearling weight, it is also important to provide body condition scores, udder and docility scores. Gathering all of this data will lead to the South Devon breed having precise EPD's and accurate information to offer to our buyers. Accuracy and efficiency are the keys to a profitable operation. By investing in precision and providing accurate data, producers and their buyers will succeed.

One area, the South Devon breed is lacking is carcass data. This year several breeders are participating in the carcass merit program at the University of Missouri. Carcass data will be provided on all steers and the data incorporated into the IGS database. If you, as a producer are feeding out steers or heifers and have the ability to obtain carcass data, please provide it to the association. The more data we have, the more accurate the numbers will be.

An additional area to improve upon, is the continued updates of your herd inventory. It is important to provide accurate disposal codes and dates of disposal. If you have questions about your herd inventory, contact



the NASDA office. The office has recently moved to Big Horn, Wyoming. The e-mail and phone number remains the same.

There is a lot of work yet to be done. In many of the articles in the 2022 South Devon Review, you'll read about genetic tools available to our membership, the successes and sustainability of different operations and where South Devon fit in crossbreeding programs and the seedstock pasture.

The association is planning several events this coming year, including the Junior National to be held in Ellsworth, Wisconsin. Members are also offering quality genetics privately and through the Midland Bull Test sale, DLCC Ranch sale and other sales across the country. I would like to encourage our membership to support our youth and participate in the events we have planned. We will also be organizing a tour to the US Meat Animal Research Center in the fall. Members must work diligently on marketing the breed at livestock events, shows, sales and personally to spread the message of the breed as the 'Profitable English Outcross'.

We have several members in the association, both here and in Canada that are battling illness. Our thoughts, prayers and support are with these individuals. All of us have had a difficult two years and everyone continues to struggle to get back on track.

The South Devon family has come together in the past and will continue to in the future. Next year, will be the 50th National South Devon and Poundmaker Show in Denver. We look forward to making it a big event for all to enjoy.

Sincerely,

*Dar Giess*

NASDA President

## 2022 BOARD OF DIRECTORS

### **Dar Giess, President**

33424 183rd Street, Pierz, MN 56364  
(320) 249-2130 • dlccranch@outlook.com

### **Kurt Nelson, Vice President**

W5137 290th Avenue, Bay City, WI 54723  
(715) 594-3805 • netnls@bevcomm.net

### **Joel Popken, Treasurer**

33360 220th Street, Swanville, MN 56382  
(320) 547-2202 • jpopken@wisper-wireless.com

### **Dr. Dale Alumbaugh**

193 SW 52nd Avenue, Trenton, MO 64683  
(660) 359-7808 • farmer6th@live.com

### **Jim Brown**

Box 259, Owl Creek Road, Lodge Grass, MT 59050  
(406) 679-0309 • mjb\_cattle2@hotmail.com

### **Keith Elkington**

5080 East Sunnyside Road, Idaho Falls, ID 83406  
(208) 523-2286 • ephrbulls@hotmail.com

### **Stephen Elmore**

1235 W Mt. Gilead CH Rd., Clinton, NC 28328  
(910) 385-6200 • sandbelmore@centurylink.net

### **Lane Giess**

324 E. Foothills Parkway, Apt. 208, Fort Collins, CO 80525  
(320) 293-1647 • lane.giess@gmail.com

### **Gino Gnech**

20990 Morelock Road, Malin, OR 97632  
(530) 905-0817 • jackignech@yahoo.com

### **Jared Mumm**

3620 N 3300 • Kimberly, ID 83341  
(208) 308-5785 • jared.mumm@yahoo.com

### **Carroll Nelson**

150 Howie Road, Big Timber, MT 59011  
(406) 690-8731 • cnelson@midrivers.com

### **Mike Steinlicht**

16764 North Cedar Road, Valley Falls, KS 66088  
(785) 224-8860 • m\_steinlicht@yahoo.com

## COMMITTEE APPOINTMENTS

### **Executive**

Dar Giess, Jim Brown, Kurt Nelson, Joel Popken

### **Finance**

**Joel Popken, Chairman**, Kurt Nelson, Jim Brown, Dr. Dale Alumbaugh, Carroll Nelson

### **Rules & Ethics**

**Dr. Dale Alumbaugh, Chairman**, Keith Elkington, Steve Elmore, Dar Giess, Carroll Nelson, Joel Popken

### **Show, Sales & Events**

**Dar Giess, Chairman**, Jim Brown, Joel Popken, Lane Giess, Jordan Vander Molen, Kurt Nelson, Gino Gnech

### **Membership & Junior Programs**

**Kurt Nelson, Chairman**, Jordan Vander Molen, Jared Mumm, Lynn Giess, Mike Steinlicht, Charles Terry, Gino Gnech

### **Performance, Carcass, IGS Programs**

**Lane Giess, Chairman**, Jared Mumm, Jim Brown, Dar Giess, Joel Popken

### **Breed Improvement & Promotion**

**Kurt Nelson, Chairman**, Mary Brown, Keith Elkington, Lane Giess, Lynn Giess, Gino Gnech, Jared Mumm, Mike Steinlicht

### **NASDA Registry Office**

#### **Sherry Doubet**

PO Box 850, Big Horn, WY 82833  
Phone: 303-770-3130 • Fax: 303-770-9302  
info@southdevon.com

### **NASDA Communications**

#### **Lynn Giess**

33424 183rd Street, Pierz, MN 56364  
southdevon\_lynn@outlook.com • 320-250-9121  
www.southdevon.com

## NEWS & NOTES

### NASDA BOARD MEMBERS ELECTED

Four board members were recently re-elected to the North American South Devon Association (NASDA) board of directors. Returning after sitting off the board for a year per Article IV of the by-laws, is Dar Giess, Pierz, MN. Newly elected board members include: Kurt Nelson, Bay City, WI; Lane Giess, Ft. Collins, CO and Dr. Dale Alumbaugh, Trenton, MO. The director whose term expired in 2022 and is required to sit off the board for a year is: Jordan Vander Molen, Pella, IA.

### NASDA OFFICE MOVES

The North American South Devon Association office has moved to Wyoming. The new address and contact information is:

NASDA  
PO Box 850  
Big Horn, WY 82833  
Phone: 303-770-3130  
Fax: 303-770-9302  
E-mail: [info@southdevon.com](mailto:info@southdevon.com)

### DNA REQUIREMENTS

The North American South Devon Association will require all South Devon sires to have a low-density genotype on file with the NASDA office on all sires of 2021 calves.

### DNA SERVICES

All DNA services and supplies must be coordinated through the North American South Devon Association office. A NASDA, DNA Cattle Testing and Summary Form is available on the NASDA website and must be submitted with all samples. DNA samples must be submitted to NASDA, PO Box 850, Big Horn, WY 82833 and the testing form e-mailed to [info@southdevon.com](mailto:info@southdevon.com).

### BODY CONDITION SCORES (BCS)

In order to calculate more accurate indexes, NASDA is encouraging members to record body condition scores and cow weights. The Beef Improvement Federation has recommended guidelines and best practices and the best time to record a BCS is at weaning. A .50 rebate will be given by NASDA to members for each BCS turned in.

## BELINDA ANN



2021 National Champion South Devon Female  
Sire: DLCC Everest 50E Dam: Belinda Ann 69E  
owned by: Kyle Stranberg, Maynard, MN

## HOPE



2022 National Champion Junior South Devon Female  
2021 Reserve National Champion South Devon Female  
Sire: DLCC Stockman 39C Dam: Contessa 82E  
owned by: Travis Moniz, Princeton, CA

**DLCC RANCH**  
SOUTH DEVONS | POUNDMAKERS | NAVIGATORS  
[www.DLCCRanch.com](http://www.DLCCRanch.com)

CHAMPION GENETICS

### LETTER K FOR 2022

The year-letter animal identification letter for 2022 is “K” and will be followed by “L” in 2023.

### BEEF QUALITY ASSURANCE (BQA)

The National BQA Program has placed a high priority on animal-handling issues and developed a variety of resources for producers working to improve. Online BQA self-assessment tools are available for cow/calf, stocker and feedlot producers. Find these tools and other information about the BQA program as [www.BQA.org](http://www.BQA.org).

### YOUTH EXPERIENCE APPLICATIONS

The deadline for the 2023 NASDA Youth Experience heifer application is October 1, 2022. Juniors interested in applying for the heifer can visit the junior page at [www.southdevon.com](http://www.southdevon.com). The 2023 heifer is being donated by 9 Mile Ranch, Kristin Dykes, Walla Walla, WA, in memory of Josh Dykes.

### MEMBERSHIP

Effective January 1, 2021, the active adult membership fee increased from \$50 to \$100 annually. The active junior membership fee increased from a lifetime \$15 fee to a \$15 setup and \$20 annual fee. Please note if you are planning to participate in a NASDA sponsored open or junior show, you must be a member in good standing with the association. Juniors will be required to pay junior dues to participate in the upcoming Junior National in Ellsworth, WI.

### WORLD SOUTH DEVON SOCIETY UPDATE

The zoom meetings held by the World South Devon Society are open to South Devon breeders from around the world. The meeting agenda includes updates from each country, special guests and future plans for the organization. For more information contact [southdevon\\_lynn@outlook.com](mailto:southdevon_lynn@outlook.com).

## Sale Reports

### NICHOLS FARMS

Bridgewater, Iowa • January 29, 2022

#### Averages:

##### South Devon Bulls

- 39 bulls averaged \$5060
- Top price: \$6100

##### Angus Bulls

- 66 bulls averaged \$5110
- Top price: \$6800

##### Simmental Bulls

- 52 bulls averaged \$5275
- Top price: \$7100

##### Hybrid Sim/Angus Bull

- 35 bulls averaged \$5000
- Top price: \$5900

### ELKINGTON POLLED HEREFORDS & SOUTH DEVON

Idaho Falls, Idaho • February 4, 2022

- 20 South Devon bulls averaged \$3350
- 75 Hereford bulls averaged \$3100
- 24 Bred Hereford heifers averaged \$1500
- 5 Bred South Devon heifers averaged \$1900

#### Top South Devon sellers:

- Lot 120H, a March 2020 son of EBS Elker 523Z sold for \$5000 to Bar A Ranch, Utah.
- Lot 091H, a March 2020 son of EBS Elker Machine 419E sold for \$4500. To Bob Slagowski of Manila, UT.
- South Devon bred heifers 050H and 089H sold for \$2600 and \$2000 to Lazy T Ranch, St. Charles, ID.

## NEWS & NOTES

### NASDA PUBLICATION ACCEPTING PHOTOS

The NASDA South Devon Review is looking for cover, editorial and advertising photos. Categories to consider: cattle in different environments, pasture, feedlot, show and sale; people working with cattle; industry-related events; and general ranch photos. Photos should strongly represent the principals and focus of the South Devon association. Vertical or horizontal

format is acceptable. NASDA will pay \$100 for photos used on the cover of the South Devon Review and \$50 for those used in South Devon advertisements. Photos received by NASDA are assumed to be released by the photographer and permission given to NASDA and the South Devon Review for use.

To submit your high-resolution photos for consideration, please email [southdevon\\_lynn@outlook.com](mailto:southdevon_lynn@outlook.com).

## 2022 CALENDAR HIGHLIGHTS

### MIDLAND BULL TEST

**April 7**

Columbus, Montana  
[midlandbulltest.com](http://midlandbulltest.com)

### ST. CROIX VALLEY BULL TEST

**April 16**

River Falls, Wisconsin  
[scvbt.com](http://scvbt.com)

### DLCC RANCH ANNUAL SALE

**April 16**

Pierz, Minnesota  
[dlccranch.com](http://dlccranch.com)

### NASDJA 'JUNIOR NATIONAL'

**June 29-July 2**

Ellsworth, Wisconsin  
[southdevon.com](http://southdevon.com)

### IOWA STATE FAIR

**August 11-21**

Des Moines, Iowa  
[iowastatefair.org](http://iowastatefair.org)

### WORLD BEEF EXPO

**September 22-25**

Milwaukee, Wisconsin  
[worldbeefexpo.com](http://worldbeefexpo.com)

### NILE SOUTH DEVON & POUNDMAKER SHOW

**October 14-22**

Billings, Montana  
[thenile.org](http://thenile.org)

### MINNESOTA BEEF EXPO JUNIOR SHOW

**October 20-23**

St. Paul, Minnesota  
[mnbeefexpo.com](http://mnbeefexpo.com)

### GREAT NORTHERN LIVESTOCK EXPOSITION

**November 14-21**

Cheyenne, Wyoming  
[greatnorthernlivestockexpo.com](http://greatnorthernlivestockexpo.com)

### NORTH STAR CLASSIC

**December 7-10**

Valley City, North Dakota  
[northdakotawintershow.com](http://northdakotawintershow.com)

### 50<sup>TH</sup> NATIONAL SOUTH DEVON SHOW

**January 8-9, 2023**

Denver, Colorado  
[nationalwestern.com](http://nationalwestern.com)



junior association

# join us for the Junior National Show & Leadership Conference

JUNE 29-JUL 2, 2022 • Pierce County Fairgrounds, Ellsworth, WI

## SHOW CHAIR

**Kurt & Nettie Nelson**

715-594-3805

651-246-8252 (Nettie's cell)

netnels@bevcomm.net

**Blocked rooms in  
River Falls, WI under  
NASDA Jr. Association**

Country Inn  
715-425-9500

Econo Lodge  
715-425-8288

Book by May 29th

## Tentative Event Schedule

### Wednesday, June 29

8am - 6pm Arena Barn available for Set-up and Check-in  
& Steer Weigh in

### Thursday, June 30

All Cattle in Place by 8am

8 a.m. Breakfast

8:30 a.m. Exhibitor Meeting & Election of Junior  
Officers

9 a.m. Check-in of, posters, photography, speeches

9:30 a.m. Speech, Marketing Contest & Quiz Bowl

12 p.m. Lunch Break

2 p.m. Ag-Olympics

4:30-5 p.m. Cattle to tie-outs

5:30 p.m. Bowling & Pizza Party

### Friday, July 1

8 a.m. Group & States Photos

Breakfast served following photos

9:30 a.m. Opening Ceremonies & Introduction of 2022  
Ambassadors

10 a.m. Poundmaker Show. Bred-and-Owned Show:  
Heifers, Bulls and Steers.

12:00 p.m. Lunch Served

1:00 p.m. Crystal Cave Tour

5-6 p.m. Cattle to tie-outs

### Saturday, July 2

8 a.m. Breakfast

10 a.m. Dedication

10:30 a.m. Purebred show followed by Showmanship

12-2 p.m. Lunch wagon available

Awards Celebration

Photos at Backdrop

End of Junior Nationals

5:00 p.m. BBQ and Hospitality at KNN Farms, Bay City

### Sunday, July 3

All out of Barn and Off Fairgrounds by Noon.

**ENTRY  
DEADLINE**  
May 1, 2022

**ENTRY FORMS**

<http://southdevon.com/juniors.html>

# Jallo Stock Farm

FORDVILLE, NORTH DAKOTA

By Kate Giess

Jallo Stock Farm, located in northeast North Dakota, owned and operated by Wayne and his wife Genell Jallow, was awarded the 2022 Commercial Producer of the Year award by the North American South Devon Association (NASDA) for his innovative AI breeding practices and incorporating the South Devon breed to achieve optimal heterosis in his commercial cow herd.

"I farm with my wife Genell and two sons Nathan and Adam," Jallo explains. "We plant 1600 acres of wheat pinto beans, soybeans and canola and have 250 acres of pasture along the Forest River and run 50 cow/calf pairs."

The farm's main focus is in farming, their calving season starts in February and concludes in March, with a majority of their genetics sourced from AI breeding.

"In 2020, we purchased two heifers and an Everest 50E son at the DLCC sale and I still have many of the first South Devons we ever bought, so longevity is also a trait they bring," Jallo says.

Bulls used in AI breeding are BC Progress 315U, DLCC Shur Loc 99W, Rock 296, DLCC Copy Cat, DLCC Dodge City, DLCC Battle Cry, DLCC Derby 64D, and DLCC Gold Dust 64G.

The heifers are synchronized to calve first and the cows are bred on natural heats for two to three weeks, then the bulls go out.

## **Founded on Heterosis, Focused on the Future**

"When I went to Dahl's sale in 2013, I knew I would find good cattle not duds," Jallo recalls. "They had three small groups of Red Angus, South Devon, and Red Angus South Devon cross - I really liked the two groups of South Devons and ended up buying the registered group of South Devons."

Jallo attended college with Jeff and John Dahl and remained lifelong friends.

"They had both Red Angus and South Devon bulls in the sale, so Jeff asked me if I was looking for a bull for heifers or cows," Jallo tells the story. "I said cows, so he suggested trying a South Devon."

Needless to say, Jallo and his family were highly pleased with the genetics they brought in to their commercial cowherd.

"We found the South Devons to be a nice breed of cattle to work with, we like the docility and feed efficiency, and to top it off - we've had fewer foot problems year-after-year with our best calves being our South Devon crosses," Jallo explains.

Before Jallo brought in the South Devon breed to his herd, he first had Angus and Red Angus genetics, which helps make excellent crossbreds in today's calves.

"Crossbreeding is making use of heterosis," Jallo says as he explains further in-depth why his operation utilizes an AI breeding technique.

"We started using AI right off the bat when we had our Jersey cows, that was the only thing we used was AI," Jallo says. "We didn't have a herd bull, so when we sold the dairy, we continued with AI'ing our beef cows."

As a commercial producer, maternal traits are vital to the success of their farm.

"We've never had a South Devon who didn't take a calf, which can be disgusting as a commercial producer," Jallo explains. "The feed efficiency of our South Devons stay in the more desirable body condition scores, whereas we've had problems with other cows."

Jallo and his family will continue to rely on successful breeds for the next generation of the family farm.

"I'm at the point of turning the farm over to my boys, they'll continue with commercial cattle and the South Devon breed or South Devon crosses," Jallo says with nothing but high hopes for his family operation. ❖



*Above: South Devons at Jallo Stock Farm. Below: Sons Adam and Nathan Jallo. Left: Genell and Wayne Jallo.*



“We found the South Devons to be a nice breed of cattle to work with, we like the docility and feed efficiency, and to top it off - we’ve had fewer foot problems year-after-year with our best calves being our South Devon crosses.”

**Wayne Jallo**  
Jallo Stock Farm  
Fordville, North Dakota



# Billie Culp

NEOSHO, MISSOURI

by Kate Giess

“Good cattle, good people, is what makes a great deal,” the 2022 South Devon Seedstock Producer of the Year Billie Culp says while he prepares his cowherd for an upcoming blizzard.

Culp is the third generation in his family of beef producers located in southwest Missouri, who invested his early dollars into South Devon to benefit from hybrid vigor, maternal strength, and unparalleled docility.

“My grandfather and father were both beef farmers, so of course, I have worked with cattle all my life,” Culp explains. “In 1977 my grandfather gave me 140 acres and Dad gave me 80 acres. I have been raising cattle since then, except for two years in which I was a teacher in China and Guatemala. I retired from teaching high school math in 2016.”

Culp became intrigued by the South Devon breed and purchased semen from ABS out of the bull, DLCC Black Enuf. “Since we liked the calves so much in 2007, we bought 20 some bred heifers from 4L South Devon and two bulls from Jack and Mary Jo Vance,” Culp says.

Culp recently decreased his cowherd from 100 to 42 cows on 500 acres with his current goal to fully manage his

cowherd on a grass-ran operation with his efforts focused on cutting back on hay costs and intensive labor time.

“This type of management allows me to run my operation with easier management practices and can reduce cost and labor usage,” Culp explains.

## Herd Breeding Practices

Since becoming involved in the South Devon breed, Culp admits to lacking knowledge in understanding how genetics can play a major factor in the future of a cowherd.

“The South Devon association has really opened my perspective about the difference of just looking at the cows, and then when you look at the data, in helping determine if it really is a good cow or not,” Culp outlines.

Culp explains what traits he takes into consideration when making a cowherd purchase.

“There are three things I look for when buying semen: diverse genetics from my cowherd, birth weight, and weaning weight. When I weaned and grew all my calves, yearling weight was more important.”



*Third-generation rancher Billie Culp started raising South Devons in 2007 in southwest Missouri.*



*Culp's current goal is to fully manage his cowherd on a grass-ran operation with his efforts focused on cutting back on hay costs and intensive labor time.*

The priority traits Culp selects for in his breeding program are - disposition, calving ease, and sound udders. Culp believes the South Devon breed to be extremely beneficial in these traits.

"With a smaller herd, I will cull more keeping cows that are (in order of priority) gentle, have good udders, and raise good calves," Culp says.

### **Predicting the Future**

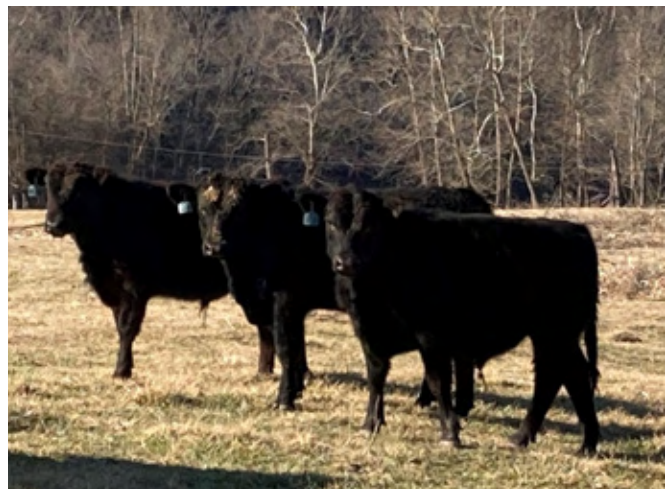
"A lot of beef producers in southwest Missouri aren't aware of the value of the breed," Culp says. "The success of the breed will depend on whether it can be marketed well."

Culp also predicts the value the South Devon breed can bring to commercial operations.

"If a beef farmer would use South Devon in a three-way cross-breeding program with Hereford and a continental breed, they would in time have a gentle herd with a high level of hybrid vigor," Culp explains.

Culp remains a member of the North American South Devon Association and continues to incorporate South Devon genetics in the profitability of his herd.

"The people, members, and staff involved in the breed, I have found all to be without exception, pleasant people to work with," Culp remarks. ❖



*The South Devon breed has been beneficial for Culp's breeding program. He selects for priority traits of disposition, calving ease and sound udders.*

"This type of management allows me to run my operation with easier management practices and can reduce cost and labor usage."

**Billie Culp**  
Neosho, Missouri

# ***IGS Carcass EPD Updates***

*by Randie Culbertson, PhD*

Carcass records on terminal cattle remain rare and highly sought-after phenotypes for National Cattle Evaluation. As the number of carcass phenotypes are limited in the National Cattle Evaluation, IGS uses breed effects from the USDA Meat Animal Research Center to adjust genetic predictions for various breeds. Programs like the Carcass Merit Program and Carcass Expansion Program are adding valuable terminal records and genomic information to the genetic evaluation.

As with any trait under selection, breed effects will change over time. As a result, US-MARC updates their breed effects annually and the IGS Multi-breed Genetic Evaluation recently updated the breed effects in the published EPDs (as of 12/20/21). The implementation of these updated breed effects caused some changes in carcass EPDs. The adjustments are set to an Angus base and are applied depending on the breed percent of the animal. When comparing the rank of bulls with a high percent of a breed, breeders may see a shift in the EPD value but the bulls still have the same rank among other bulls with the same breed percentage. However, reranking occurred when comparing one breed to another as well as different percentage composites.

An ongoing challenge of estimating carcass EPDs is the lack of carcass phenotypes. This lack of phenotypes creates a real challenge for the genetic evaluation to appropriately account for breed differences. With traits that have limited records and breed comparisons within contemporary groups, using field data (i.e. IGS data) can lead to unreliable estimation of breed effects. In those cases, breed effects from scientific literature are



“It’s easy to make crossbreeding decisions where we’re seeking out specific genetic traits and inputs for our production system. We don’t have to spend a lot of time trying to figure out how does breed A compare to breed B? It’s all laid out and they’re on the same base and scale.”

**Bob Weaber**

*Extension Specialist*

*Kansas State University*



often used. The advantage of using breed effects from literature is that the effects are derived from “clean” data and often from herds with breeding systems designed specifically to obtain these breed effects. In the case of carcass trait breed differences, the IGS Multi-breed Genetic Evaluation uses the breed effects derived from US-MARC.

**IGS Commercial Focus . . .**

Modern-day ranching requires more information to produce better animals, and International Genetic Solutions is propelling the effort across multiple breeds. The aim is to provide more accurate selection tools that allow for head-to-head comparisons and maximum profitability — regardless of breed.

“Tying all of that information together adds a lot of value to commercial and seedstock producers because it provides a set of EPD that are comparable across breeds without doing a bunch of extra math to figure out how they compare,” says Bob Weaber, Kansas State University Extension specialist.

“It’s easy to make crossbreeding decisions where we’re seeking out specific genetic traits and inputs for our production system. We don’t have to spend a lot of time trying to figure out how does breed A compare to breed B? It’s all laid out and they’re on the same base and scale.”

International Genetic Solutions, or IGS, is a collaborative effort between numerous beef breed associations from the US, Canada, and Australia, resulting in the largest and only major multi-breed cattle evaluation system. With decades of data and nearly 18 million

animals in the database, IGS Director of Commercial and Industry Relations Chip Kemp says IGS is helping producers make more powerful breeding decisions than ever before.

“You can directly compare a yearling weight from a Simmental to a Red Angus to a South Devon. You can directly compare the stayability or the cow longevity from a Balancer to Angus in the system to a SimAngus,” he says. “It empowers that commercial client to get past all of the clutter to make smarter, wiser, more profit-focused decisions.”

IGS uses a single-step genetic evaluation model that incorporates genomic and phenotypic information on purebred and composite animals. The collaboration allows participating breed associations to gather and analyze data on traits that are difficult to measure but economically important.

“We’re able to calculate EPD on those cattle, and these cattle bring the power of heterosis and crossbreeding to the commercial cattleman as far as increased performance in their cow herds, increased growth, and productivity in their calf crop,” says Tom Strahm of the American Gelbvieh Association, one of many IGS collaborators.

*(Continued on page 18)*



# Best Practices for Genomic Testing

## All animals within a contemporary group should be genotyped

If genomic data are meant to truly enable selection decisions, this information must be collected on animals before selection decisions are made.

The return on investment of this technology is substantially reduced if it is used after the decision is made.

## Both male and female animals should be genotyped

The promise of genomic selection has always suggested the largest impact is for lowly heritable and / or sex limited (e.g., fertility) traits or those that are not routinely collected (e.g., disease). This is indeed true, but it necessitates that, genotyped animals, have phenotypes. For sex-limited traits, this becomes a critical choke point given historically the vast majority of genotyped cattle are males. If producers wish to have genomic-enhanced EPD for traits such as calving ease, maternal and heifer pregnancy, they must begin to genotype females.

## Genotypes can provide useful information in addition to predictions of additive genetic merit.

Do not forget the value in correcting parentage errors, tracking inbreeding levels, identifying unfavorable haplotypes, estimating breed composition and estimating retained heterozygosity. All of these can be garnered from populations that have a well-defined set of genotyping protocols.

The beef industry should be congratulated for the rapid adoption of genomic technology, but there is a lot of work to do. Of critical importance is the fact that genomic technology will continue to change and does not replace the need for phenotypes nor the fundamental understanding of traditional selection principles including EPD and accuracy.

IGS also helps cattle producers verify the value of feeder calves, weighing good management practices alongside genetic merit through free tools like the Feeder Profit Calculator. The goal: Better, returns on genetic investments.

“The greatest thing it’s brought is just a better system for cattle evaluations and the collaborative effort of people working together through different breed associations. When you’ve got this many cattle in the evaluation, what you get is crossbred cattle evaluations that the commercial cattleman can use,” says Mark Anderson, North American Limousin Foundation executive director. “So, in the race to make the better kind of cattle, the science we’re using today, I think it’s on the forefront and getting really exciting.” ❖





# GENETIC PREDICTIONS

## Best Practices for Seedstock Producers to Receive the Most Accurate Results

### 1 Clearly define breeding objectives

With the ability to increase the rate of genetic change comes the possibility to make mistakes at a faster pace. Breeding goals need to be clearly identified to ensure that selections at the nucleus level matches the profit-oriented needs of the commercial industry.

### 2 Use whole herd reporting

Inventory-based reporting captures more complete phenotypes on reproductions and longevity traits and thus creates more accurate genetic selection tools.

### 3 Properly define contemporary groups

It is important for the precision of the genetic evaluation to group animals treated uniformly. Proper reporting of contemporary groups reduces bias in EPD.

### 4 Take data collection and reporting seriously

Phenotypes are the fuel that drives the genetic evaluation. Take pride in collecting accurate data. Report records on the complete contemporary group in order to paint the most accurate picture of the genetics in these cattle. If possible, collect additional phenotypes like mature cow weight, cow body condition score, udder scores, feed intake and carcass data.

## Adding a DNA test to your decision is like knowing . . .

- 25+ calving ease scores
- 22 birth weights
- 25+ weaning weights
- 25+ yearling weights
- Stayability / productivity records on 15 daughters
- 6 carcass weights
- 10 marbling scores
- 8 ribeye area measurements

All this from a test you can complete before you wean the calf.

### 5 Make both thorough and accurate data collection for economically relevant traits a high priority

The quantity and quality of fertility traits need to dramatically improve. Providing disposal codes to identify why females leave the herd is vital. Commercial data resources, where the true economically relevant traits exist, are going to become more critical to capture.

### 6 Use index-based selection

As the list of published EPD continues to grow, using economic selection indices will become even more helpful to reduce the complexity of multiple trait selection.

If the number of EPD increase, tools to reduce the complexity of sire selection of commercial producers must continue to develop. Breed associations and seedstock producers have the obligation to aid commercial clientele in making profitable bull selection decisions.

### 7 Use genomics

Genomic selection offers an opportunity to increase the rate of genetic change and break the antagonistic relationship between generation interval (the average age of the parents when the next generation is born) and the accuracy of selection (e.g., accuracy of EPD) – two components that determine the rate of genetic change. However, as with any tool, genomic information must be used correctly and to its fullest extent. ❖

2022 NORTH AMERICAN  
SOUTH DEVON ASSOCIATION

# Youth Heifer Recipient

CONNOR PORATH

Connor Porath of Twin Falls, Idaho, 17, is the 2022 recipient of the North American South Devon Association youth experience heifer, donated by KNN Farms, Bay City, Wisconsin.

“Compared to his contemporaries, Connor is always willing to jump in and help whomever asks. He isn’t afraid to work hard and take the time to problem solve. Most important of all to me, I have never seen him down, always optimistic and positive, something I feel we can always use more of in this challenging world of agriculture,” said Joseph Maxwell, Agriculture Education Instructor and FFA Advisor for the Kimberly, Idaho School District. “Without a doubt I fully believe that any support you can provide this young man is a wise investment into not only his future, but the Ag community as well.”

“I would like to participate in the South Devon Youth Experience Program, because I am very interested in the South Devon breed and being a part of the North American South Devon Association,” said Porath. “I enjoy showing heifers and learning from others.” ❖



2022 NASDA Youth Experience Recipient, Connor Porath, Twin Falls, ID and the heifer he received from the Nelson family.

“One thing I have noticed after showing steers for seven years, is that it is hard to raise a steer that does well in both the show ring and in the carcass contest. I take a lot of pride in both areas and feel that the South Devon’s superior carcass traits, coupled with good muscle and growth provide the potential to create animals that will have success in both areas.”

## Connor Porath

Youth Heifer Recipient  
Twin Falls, Idaho

Connor Porath accepts the award for the 2022 NASDA Youth Experience heifer, pictured with Jared Mumm, NASDA board member, Nettie and Kurt Nelson, KNN Farms and Dar Giess, NASDA president.



2021

# Iowa State Fair

DES MOINES, IOWA



## Iowa State Fair Showmanship

Front row L to R: Emilee White, Jillian Kniep, Jayse Vander Molen, Oakley Yarwood, Jaren Vander Molen, Back row L to R: Ciera Steinlicht, Riley McCormick, Savannah Anderson



## Champion Bull

JVM EGR High Roller 076H  
Sire: MJB Dillon 689D – BD: 10/26/20  
JVM Cattle Company, Pella, IA



## Reserve Champion Bull

WGF Dutton  
Sire: JVM Easton 750E – BD: 3/9/21  
Walnut Grove Farm, Valley Falls, KS



## Champion Female

KNN Katness 10H  
Sire: DLCC Energizer 37E – BD: 3/26/20  
KNN Farms, Bay City, WI



## Reserve Champion Female

JVM Carma 501C with her 2/3/21 calf at side  
Sire: KNN Ranger 37T – BD: 5/8/2015  
JVM Cattle Company, Pella, IA



**Champion Poundmaker Female**

JVM Halsey 0138

Sire: JVM Easton 750E – BD: 2/16/20

Abe Fick, Bay City, WI



**Reserve Champion Poundmaker Female**

WF Malibu Bay Breeze 18G

Sire: WF Wishful Thinking – BD: 6/6/19

White Farms, Wadena, MN



**Champion Junior Heifer**

KNN Katness 10H

Sire: DLCC Energizer 37E – BD: 3/26/20

Oakley Yarwood, Bay City, WI



**Reserve Champion Junior Heifer**

WGF Echo with her 3/9/21 calf at side

Sire: MGM G Callen 050X – BD: 11/15/12

White Farms, Wadena, MN



**Champion Junior Bull**

WGF Dutton

Sire: JVM Easton 750E – BD: 3/9/21

Ciera Steinlicht, Valley Falls, KS



**Reserve Champion Junior Bull**

WF Jack 2j

Sire: WF Wishful Thinking – BD: 2/1/21

Emilee White, Wadena, MN



**Champion Junior Poundmaker Female**

WF Malibu Bay Breeze 18G with her 5/1/21 calf at side

Sire: WF Wishful Thinking – BD: 6/6/19

Emilee White, Wadena, MN



**Reserve Champion Junior Poundmaker Female**

WF Smokette 6J

Sire: WF Wishful Thinking – BD: 4/15/21

Emilee White, Wadena, MN

2021

# MN Beef Expo

ST. PAUL, MINNESOTA



**Grand Champion Female**

DLCC Belinda Ann 33H

Sire: DLCC Everest 50E – BD: 3/18/20

Kyle Stranberg, Maynard, MN



**Reserve Champion Female**

ELS Queen of Fury 10H

Sire: DLCC Fury 46F – BD: 3/12/20

Lindsey Strauch, Fairchild, WI

## IN REMEMBRANCE

### *William (Bill) Angell* 1946-2022

Bill Angell, 76 of LaSalle, Colorado passed away January 27, 2022. Well-known in the cattle industry, Bill was especially at home ringside. A skilled ring man, Bill was sought after by seedstock producers across the country. Raised on a farm in Michigan, where he first acquired his love for agriculture, Bill went on to attend Michigan State University (MSU), and earned a master's degree from the University of Wisconsin. Actively involved in livestock judging at both MSU and UW, he went on to coach the livestock judging team at the University of Kentucky. After two years coaching and mentoring students at the university, Bill made a career change that would set in motion the next, nearly 50 years of his professional life.

His love for the purebred side of the cattle industry was forged when he began working for the American Polled Hereford Association as a field man. After a move to Colorado, he worked for the Record Stockman newspaper, assisting seedstock operations with their marketing and promotional strategies for their annual production sales. One of his most valued and loved contributions in this capacity was the ability to provide ring services at these



production sales. He was a fixture, ringside at production sales across the country for decades.

He also worked with Superior Livestock Auction, was the yards manager at the National Western Stock Show and the Nebraska State Fair. He gave a lifetime of service to the cattle industry and his contributions were vast.

Bill is survived by his wife of 50 plus years, Donna; son Blake (Kirsten) Angell, Gove, KS; daughter, Miki (Steve) Kissler, LaSalle, CO; daughter Missy (Amy) Angell, Greeley, CO and four grandchildren.

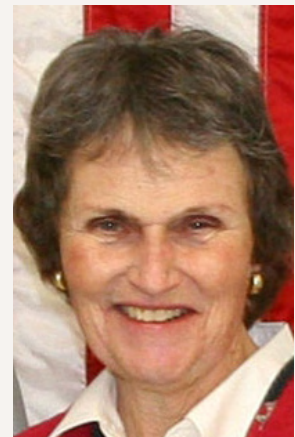
### *Phyllis Nichols* 1944-2021

Phyllis Nichols, 77 of Anita, IA died at her home on Sept. 23, 2021. A full-time owner/manager of Nichols Farms in Bridgewater, IA, Phyllis worked alongside her husband of over 50 years, Dave and sister-in-law Lillian.

An integral part of the Angus, South Devon and Simmental operation, in the first half of her married life, she calved 150-200 first calf heifers and had her own flock of Montadale ewes. After having children of her own, she dispersed her flock of sheep. In addition to calving and all the other duties a large cattle operation entails, she also worked in the Nichols Farms office.

She enjoyed interacting with the customers, visitors and Nichols crew. She was active in the community and was well-known as the "hostess with the mostest."

She is survived by her husband, Dave; children: Fletcher and Jennifer, brother Lans Gibbs; sisters-in-law Edy Hill and Lillian Nichols and two grandchildren.



# *Surf, Sand & Showin'*

On the Grand Island of Nebraska

June 21-24, 2021



2021 NASDJA Junior National Participants



## **2021 Junior National Showmanship Winners**

From l to r: Ciera Steinlicht, reserve intermediate; Jaelynn Smith, reserve junior; Lauren Terry, reserve senior; Emilee White, champion senior; Chace Terry, champion intermediate and Lindsey Strauch, champion junior.



## **Top Honors:**

From l to r: Kyle Stranberg, Premier Exhibitor; Chace Terry, Herdsman of the Year; Emilee White, People's Choice Herdsman; Carlee McCracken, Heartland Challenge. Not pictured: Hidden Paradise Ranch, Premier Breeder.



**Champion Female**

DLCC Belinda Ann 33H

Sire: DLCC Everest 50E – BD: 3/18/20

Kyle Stranberg, Maynard, MN



**Reserve Champion Female**

JVM Harper 001H

Sire: JVM Easton 750E – BD: 1/30/20

Jaelynn Smith, Sully, IA



**Champion Poundmaker Female**

EGR Hula Moola 62H

Sire: I-80 – BD: 9/2/20

Emma Gnech, Malin, OR



**Reserve Champion Poundmaker Female**

SC Miss Sassy 22G with her 2/12/21 calf at side

Sire: DLCC Mr. Brightside 92E – BD: 3/23/19

Kyle Stranberg, Maynard, MN



**Champion South Devon Steer**

WGF 22

Sire: Dillon – BD: 3/6/20

Ciera Steinlicht, Valley Falls, KS



**Champion Poundmaker Steer**

SBCC Hidalgo

Sire: SBCC Frontier 8140 – BD: 6/19/20

Chace Terry, Winchester, KS



*Gino & Jacki Gnech & Family*

20990 Morelock Road, Malin, OR 97632  
(541) 371-0085 • jackignech@yahoo.com

# TRUE OUTLIER

*Of the Breed*

SEMEN/OWNERSHIP  
OPPORTUNITY



*2021 National Champion  
Paundmaker Bull*  
SN JYNK 01J

BW+.02 | WW+66 | YW +108 | M+17



*2021 National Champion  
Paundmaker Heifer*  
KVH MS JOLENE 06J

BW +0.3 | WW+63 | YW+105 | M+20

FOR SALE

CONTACT THE VAN HAUR FAMILY, VALIER MT, 406-350-1564 FOR DETAILS.

NORTHERN INTERNATIONAL LIVESTOCK EXHIBITION

2021

# Parade of Champions

BILLINGS, MONTANA



**Champion Bull**

DLCC Gold Dust 64G

Sire: DLCC Debut 88D – BD: 4/1/19

DLCC Ranch, Pierz, MN



**Reserve Champion Bull**

DLCC Honest Broker 187H

Sire: DLCC Derby 64D – BD: 9/16/20

DLCC Ranch, Pierz, MN



**Champion Female**

DLCC Belinda Ann 33H

Sire: DLCC Everest 50E – BD: 3/18/20

Kyle Stranberg, Maynard, MN



**Reserve Champion Female**

DLCC Hope 29H

Sire: DLCC Stockman 39C – BD: 3/17/20

Travis Moniz, Princeton, CA



**Champion Poundmaker Bull**

SN Jynx 01J

Sire: BC Progress 315U – BD: 1/28/21

Shiloh Neal, Valier, MT



**Reserve Champion Poundmaker Bull**

JVH Buddy 02J

Sire: BC Progress 315U – BD: 2/13/21

Jaxson Van Haur, Valier, MT



**Champion Poundmaker Female**

KVH Miss Jolene 06J

Sire: BC Progress 315U – BD: 3/5/21

Kade Van Haur, Valier, MT



**Reserve Champion Poundmaker Female**

DLCC Holly's Charm 15H

Sire: BUBS Southern Charm – BD: 3/12/20

DLCC Ranch, Pierz, MN



**Champion Junior Heifer**

SC Miss Sassy 22G with her 2/12/21 calf at side

Sire: DLCC Mr. Brightside 92E – BD: 3/23/19

Kyle Stranberg, Maynard, MN



**Reserve Champion Junior Heifer**

ELS Queen of Fury 10H

Sire: DLCC Fury 46F – BD: 4/15/20

Lindsey Strauch, Fairchild, WI



**Champion Junior Bull**

*SN Jynx 01J*

*Sire: BC Progress 315U – BD: 1/28/21*

*Shiloh Neal, Valier, MT*



**Reserve Champion Junior Bull**

*JVH Buddy 02J*

*Sire: BC Progress 315U – BD: 2/13/21*

*Jaxson Van Haur, Valier, MT*

**2021 Golden Comb Award Winner**

*Travis Moniz, Princeton, CA*

*Special Honors*



**North American South Devon Association**

*Lifetime Achievement*

*Jim and Mary Brown*

*MJB Ranch, Lodge Grass, Montana*



**2021 Seedstock Producer of the Year**

*Joel & Bob Popken*

*RP Farms and Popken South Devons*

*Swanville, Minnesota*



# Elkington

## Polled Herefords & South Devon

### CONTACT

Keith Elkington (Home)  
208-523-2286  
(Cell) 208-521-1774

Layne Elkington  
(Cell) 208-681-0765

Brent Elkington (Home)  
208-523-6461

Eric Elkington  
(Cell) 208-881-4014

Range raised Polled Hereford and South Devon Cattle Raised at High Elevation in the Deserts of Eastern Idaho (annual precipitation 12 inches a year)

Bred to thrive on sparse feed with the need to travel for water.

We sell 25 to 30 range-raised coming two-year-old bulls on the first Friday in February every year and 5 to 10 bred heifers.

We are a short distance from Jackson Hole Wyoming and Yellowstone National Park. We invite you to come and visit if you are in the area. We will show you the cattle and take you fishing.



### EBS ELKER 1121 642A

- A red South Devon bull that is moderate and thick with tremendous depth.
- We love the calves out of this bull. They are long, smooth and super thick. They are great!
- Owned with David Corker in Australia.

**SAVE THE DATE**  
**Annual Sale**  
**February 3, 2023**



Our select herd of South Devons has an exceptional foundation based on 26 years of carefully chosen high-quality maternal traits crossed with outstanding bulls.

**\*Typical  
Poundmaker  
calf sired by  
DLCC Grandeur**

**650+ lb weaning  
weight**



NATIONAL WESTERN STOCK SHOW  
2022  
*Parade of Champions*  
DENVER, COLORADO



**Champion Bull**

DLCC Gold Dust 64G

Sire: DLCC Debut 88D – BD: 3/29/19

DLCC Ranch, Pierz, MN

Sponsored by: Elkington Bros. & Sons



**Reserve Champion Bull**

JVM Johnny Cash 150J

Sire: JVM Easton 750E – BD: 2/25/21

JVM Cattle Company, Pella, IA



**Champion Female**

DLCC Loop 74H

Sire: DLCC Everest 50E – BD: 4/2/20

DLCC Ranch, Pierz, MN

Sponsored by: Sadler Cattle Company



**Reserve Champion Female**

DLCC Jessica 149J

Sire: DLCC Gold Dust 64G – BD: 5/2/21

DLCC Ranch, Pierz, MN



**Champion Poundmaker Bull**

JVM Jack Daniels 161J

Sire: JVM Easton 750E – BD: 5/10/21

JVM Cattle Company, Pella, IA



**Reserve Champion Poundmaker Bull**

ELS Mountain Time 63H

Sire: DLCC Durango 26Z – BD: 5/30/20

Hidden Paradise Ranch, Eau Claire, WI



**Champion Poundmaker Female**

JVM Joslyn 110J

Sire: JVM Easton 750E – BD: 5/7/21

Emilee White, Wadena, MN



**Reserve Champion Poundmaker Female**

DLCC Loop 24J

Sire: BUBS Southern Charm – BD: 3/4/21

DLCC Ranch, Pierz, MN



**Champion Junior Heifer**

DLCC Hope 29H

Sire: DLCC Stockman 39C – BD: 3/17/20

Travis Moniz, Princeton, CA

Sponsored by: Zimmer Land & Livestock



**Reserve Champion Junior Heifer**

GIG Just a Freak 12J

Sire: EGR Beefcake – BD: 2/14/21

Emma Gnech, Malin, OR

Sponsored by: Alumbaugh Farms



**Champion Poundmaker Junior Heifer**

JVM Joslyn 110J

Sire: JVM Easton 750E – BD: 5/7/21

Emilee White, Wadena, MN

Sponsored by: Fick Cattle



**Reserve Champion Poundmaker Junior Heifer**

EGR Jenny 23J

Sire: EGR Beefcake – BD: 2/27/21

Emma Gnech, Malin, OR

Sponsored by: C/N Ranch



**2022 Golden Comb Award Winner**

Emma Gnech, Malin, Oregon

## Showmanship

**Champion Senior Showman**

Emma Gnech, Malin, OR

Sponsored by: JVM Cattle Company

**Reserve Champion Senior Showman**

Emilee White, Wadena, MN

Sponsored by: TM Livestock

**Champion Junior Showman**

Macie Casper, Alma Center, WI

Sponsored by: TM Livestock

**Reserve Champion Junior Showman**

Ciera Steinlicht, Valley Falls, KS

Sponsored by: Bar/E Cattle

# Thank You

sponsors and  
supporters of the  
2022 benefit auction.

2021

# Great Northern Livestock Exposition

CHEYENNE, WYOMING



## Grand Champion Female

DLCC Belinda Ann 33H

Sire: DLCC Everest 50E – BD: 3/18/20

Kyle Stranberg, Maynard, MN

# Northern States

SOUTH DEVON ASSOCIATION



*Congratulations Addison Kelm, Waseca, MN, 2021 Winner of the MYBEP South Devon Heifer. Provided by Popken South Devon, RP Farms, Swanville, MN & donated by Northern States members.*

The NSSDA welcomes all South Devon and cattle enthusiasts. The NSSDA is passionate about the breed and diligently works on junior involvement, connecting seedstock producers with commercial cattlemen and promoting the breed as a viable outcross.

## FOR MORE INFORMATION CONTACT:

**Jim Sadler, President**  
(612) 581-8706  
jwbulldog2@gmail.com

**Nettie Nelson, Secretary**  
(715) 594-3805  
netnels@bevcomm.net

## JOIN US IN 2022

**St. Croix Valley Bull Test**  
River Falls, WI – April 16

**DLCC Ranch Bull Sale**  
Pierz, MN – April 16

**NASDJA Junior National**  
Ellsworth, WI – June 29-July 2

**Minnesota State Fair**  
St. Paul, MN – August 18

**NSSDA Field Day**  
TBD – September 10

**MN Beef Expo**  
St. Paul, MN – October 20-23

## FACES & PLACES



*Jordan and Trice Vander Molen compete in the three-legged race at the 2021 Junior National in Grand Island, NE.*



*Calving in full swing at the Popken South Devon farm in Swanville, MN.*



*Larry Nielsen and Dar Giess at the 2021 48th National South Devon Show in Billings, MT.*



*South Devon-influenced calves at the 9 Mile Ranch, Walla Walla, WA.*

## FACES & PLACES



*Juniors competed during the peewee showmanship at the 2021 Junior National.*



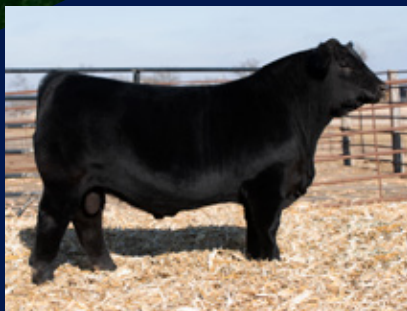
*Kurt Nelson, Bay City, WI and Keith Raty, Raty Ranch, Chinook, MT.*

Send us a pic! Submit your high-resolution photos for consideration to [southdevon\\_lynn@outlook.com](mailto:southdevon_lynn@outlook.com).

# JVM Cattle Company

**Bulls, Females, Embryos and Semen  
available year-round from  
the top genetics in the breed**

## **JVM High Roller 076H**



***Congratulations to all our  
customers and thank you for your  
continued support of our program***

## **JORDAN, TAYLER, TRICE & BREXTON VANDER MOLEN**

1186 133rd St. • Pella, Iowa 50219  
(641) 521-9917 • [jordanjvm@gmail.com](mailto:jordanjvm@gmail.com)



Like our Facebook page  
at JVM Cattle Company



## California

### SUPERIOR LAND & CATTLE

STEVE & ANNE SMULL  
PO BOX 455  
LINCOLN, CA 95648  
916-871-6463  
HERD PREFIX: SUP

### ZOMBIEWOLF CATTLE COMPANY

STEPHEN KING  
13010 COUNTY ROAD 60  
ALTURAS, CA 96101  
530-223-4444  
MUCSHARK8@MSN.COM

## Colorado

### DOUBLE RL CATTLE COMPANY

5180 HIGHWAY 62  
RIDGWAY, CO 81432  
970-626-5485  
LAURA@RRLRANCH.COM  
HERD PREFIX: DRL

### DEBBIE GRAY

14499 RAPID CREEK ROAD  
HOTCHKISS, CO 81419-9438  
970-872-9373  
HERD PREFIX: DBM

### LANE & KATE GIESS

324 E FOOTHILLS PARKWAY, APT. 208  
FORT COLLINS, CO 80525  
320-293-1647  
HERD PREFIX: DLCC

### LEACHMAN CATTLE OF COLORADO

2056 W COUNTY ROAD 70  
FT COLLINS, CO 80524  
LEE@LEACHMAN.COM

## Georgia

### BAR R CATTLE COMPANY

ALICIA RIGDON  
2900 TIG KNIGHT ROAD  
LOGANVILLE, GA 30052  
HERD PREFIX: RIGD

## Idaho

### ELKINGTON BROS & SONS

KEITH ELKINGTON  
5080 EAST SUNNYSIDE RD  
IDAHO FALLS, ID 83406  
208-523-2286  
EPHRBULLS@HOTMAIL.COM  
HERD PREFIX: EBS

### MARVIN AND DENISE MUMM

3620 N 3300 E  
KIMBERLY, ID 83341  
208-308-5058  
DENISEMUMM@GMAIL.COM  
HERD PREFIX: MD

### JARED MUMM

3620 N 3300  
KIMBERLY, ID 83341  
208-308-5785  
JARED.MUMM@YAHOO.COM  
HERD PREFIX: SIG

## Illinois

### WAGNER CATTLE

DUSTIN WAGNER  
9969 ST RT 3  
RED BUD, IL 62278  
618-980-4685  
WCCANGUS@AOL.COM  
HERD PREFIX: WCC

## Iowa

### G & S SOUTH DEVONS

GARY MILLER  
63777 GALVESTON ROAD  
ATLANTIC, IA 50022  
712-243-5098  
HERD PREFIX: GS

### GEM SOUTH DEVONS

DR. BARBARA HARRE  
13150 106 AVE  
DAVENPORT, IA 52804  
563-381-2294  
BHARRE@AOL.COM  
HERD PREFIX: GEM

### HILL CREST SOUTH DEVONS

SHARON & SHAWN VAN WYK  
401 460TH AVE  
GRINNELL, IA 50112  
641-593-6674  
VANWYKWOODB@IOWATELECOM.NET  
HERD PREFIX: EVW

### JVM CATTLE COMPANY

JORDAN & TAYLER VANDER MOLEN  
1186 133RD STREET  
PELLA, IA 50219  
641-521-9917  
JORDANJVM@GMAIL.COM  
HERD PREFIX: JVM

### KUNTZ & SONS

4082 170TH STREET  
BROOKLYN, IA 52211  
641-522-7179  
HERD PREFIX: SLF

### MAR-BET FARM

MARTY & BETTY VANDER MOLEN  
1186 133RD STREET  
PELLA, IA 50219  
641-594-4280  
MARBET@NETINS.NET

### NICHOLS FARMS LTD

DAVE NICHOLS  
2188 CLAY AVE  
BRIDGEWATER, IA 50837  
641-369-2829  
NICHOLS@NICHOLSFARMS.BIZ  
HERD PREFIX: DS

### LEVI WOIWOOD

1685 PALM AVE  
GARNER, IA 50438  
641-587-2186  
HERD PREFIX: LLW

## Kansas

### BUTTERFLY ACRES

CAROL WILKEN  
501 17TH ST  
VALLEY FALLS, KS 66088  
785-935-2185  
BUTTERFLYACRES@EMBARGMAIL.COM  
HERD PREFIX: BFA

### FRASER RANCH

LOUANN FRASER  
21994 BETHLEHEM ROAD  
PAXICO, KS 66526  
530-228-3567  
FRASERCATTLE@AOL.COM  
HERD PREFIX: TOAR

### SHOWBOAT CATTLE COMPANY

CHARLES TERRY  
13266 WELLMAN RD  
WINCHESTER, KS 66097-9718  
785-224-9565  
BOAT@SHOWBOATCO.COM  
HERD PREFIX: SBCC

### BILL AND BRIDGET THOMAS

PO BOX 376  
TOWANDA, KS 67144  
316-253-3264  
BRIDGETRTHOMAS@YAHOO.COM  
HERD PREFIX: BBT

### WALNUT GROVE FARM

MIKE & STEPHANIE STEINLICHT  
16764 NORTH CEDAR ROAD  
VALLEY FALLS, KS 66088  
785-224-8860  
GARRETTANDCO2000@YAHOO.COM  
HERD PREFIX: WGF

## Kentucky

### WINDY CREEK FARMS

MARK HAYNES  
317 FOX CHASE DRIVE  
ELIZABETHTOWN, KY 42701  
270-769-1383  
MARK@GOLDSTARREALTYKY.COM  
HERD PREFIX: KSP

## Massachusetts

### THE KOEBKE FAMILY

JIM & KRISANNE KOEBKE  
33 KOEBKE ROAD  
DUDLEY, MA 01571  
508-949-2043  
AMERADAHOLSTEINS@CHARTER.NET  
HERD PREFIX: JKK

## Minnesota

### TIFFANY BOYD

6070 277TH AVE NW  
ISANTI, MN 55040  
763-486-9717  
TMB@BOYDS-FARM.COM  
HERD PREFIX: TB

### DLCC RANCH

DAR & LYNN GIESS  
33424 183RD STREET  
PIERZ, MN 56364  
320-249-2130  
DARLYNN@FALLSNET.COM  
HERD PREFIX: DLCC

### MITCHELL FRANK

14347-210TH STREET  
MILACA, MN 56353  
320-282-3546  
CJMBFRANK@FRONTIERNET.NET  
HERD PREFIX: JCF

### LEAH GIESS

33424 183RD STREET  
PIERZ, MN 56364  
HERD PREFIX: DLCC

### DLCC WHIPLASH SYNDICATE

LYNN GIESS  
33424 183RD STREET  
PIERZ, MN 56364

### BRIANA FERGUSON

1745 50TH STREET SE  
KERKHOVEN, MN 56252  
320-264-1213  
SJAHN@TDS.NET  
HERD PREFIX: LV

### J BOONE HAWLEY

33424 183RD STREET  
PIERZ, MN 56364

### JC FARM

JASON FRANK  
14347-210TH STREET  
MILACA, MN 56353  
320-282-3546  
CJMBFRANK@FRONTIERNET.NET  
HERD PREFIX: JCF

### MAPLE RIDGE FARM

MATTHIAS J NOVAK  
8155 380TH AVE  
HILLMAN, MN 56338  
320-355-2129  
NOVAK@CLOUDNET.COM  
HERD PREFIX: MRF

### AARON MILLER

2299 140TH STREET  
SWANVILLE, MN 56382  
320-360-1152  
MILLERJ95@YAHOO.COM  
HERD PREFIX: AJR

### JOEL POPKEN

33360 220TH STREET  
SWANVILLE, MN 56382  
320-547-2202  
JPOPKEN@WISPER-WIRELESS.COM  
HERD PREFIX: JP

### R P FARMS

ROBERT POPKEN  
33360 220TH STREET  
SWANVILLE, MN 56382  
320-547-2202  
HERD PREFIX: RP

### SADLER CATTLE COMPANY

GAIL JOHNSON & JIM SADLER  
21140 SAINT FRANCIS BLVD  
ANOKA, MN 55303  
612-581-8706  
GAIL\_JOHNSON@YAHOO.COM  
HERD PREFIX: SCC

### THOMPSON LAND & CATTLE COMPANY

JACE & VEARL THOMPSON  
6629 100 STREET SW  
MOTLEY, MN 56466  
801-391-8989  
THEBRICK25@GMAIL.COM  
HERD PREFIX: TLC

### TWO STEP SYNDICATE

33424 183RD STREET  
PIERZ, MN 56364  
320-249-2130

### WHISPERING SPRUCE FARM

TRAVIS & CONNIE SCHLOSSER  
16312 CR #3 NE  
MILTONA, MN 56364  
218-943-4318  
TRAVISCONNIE@MIDWESTINFO.NET  
HERD PREFIX: WS

### WINTERS LIVESTOCK ENTRPRISES

ERIC & JAMES WINTERS  
14350 165TH AVE NE  
FOLEY, MN 56329  
320-387-2920  
HERD PREFIX: WLE

## Missouri

### ALUMBAUGH FARMS

DALE V AND TERESA M ALUMBAUGH  
193 SW 52ND AVE  
TRENTON, MO 64683  
660-359-7808  
FARMER6TH@LIVE.COM  
HERD PREFIX: DA

### WHITNEY ALLEN BINGHAM

677 SE 70TH STREET  
CHULA, MO 64635  
660-358-2101  
BEARCAT.W.ALLEN@GMAIL.COM  
HERD PREFIX: JWB

### BILLIE G CULP

20532 QUAIL ROAD  
NEOSHO, MO 64850  
417-628-3847  
BGCULP@LERU.NET  
HERD PREFIX: BGC

### DIAMOND S DEVONS

PATRICK & MYRA SWYERS  
33 COUNTRY ROAD 4055  
SALEM, MO 65560  
573-739-1161  
HERD PREFIX: DSD

### MICHAEL & HEATHER JOHNSON

2554 COUNTY ROAD 4740  
POMONA, MO 65789  
HERD PREFIX: HJ

### CHARLES MAYFIELD

63988 FOUNDRY STREET  
RUTLEDGE, MO 63563  
816-434-5435  
CHARLES MAYFIELD42@ICLOUD.COM  
HERD PREFIX: CKM

### PARROTTE CATTLE COMPANY LLC

JASON & CHELSEA PARROTTE  
12534 S 825 ROAD  
STOCKTON, MO 65785  
660-953-0271  
PARROTTECATTLECOLLC@GMAIL.COM  
HERD PREFIX: PCC

### STEPHENS B ROBERTS

PO BOX 585  
MACON, MO 63552  
660-385-4339  
SROBERTS1@MOFB.ORG  
HERD PREFIX: SR

### TYLER ROLOFSON

15279 CHINNERETH E STREET  
SAVANNAH, MO 64485  
660-623-0284  
TROLOFSONDVM@GMAIL.COM  
HERD PREFIX: TR

## 2022 MEMBERSHIP DIRECTORY

### TRIPLE CROWN SOUTH DEVON FARM

RANDALL J CAMPBELL  
4114 STATE RT U  
RUSSELLVILLE, MO 65074  
573-782-3418  
RSCAMPBELL1984@GMAIL.COM  
HERD PREFIX: TC

### WALKING C RANCH

JAKE & PETREA CARLSON  
7235 NW GOSPEL ROAD  
AMITY, MO 64422  
660-541-2986  
WALKINGCRANCH@GMAIL.COM  
HERD PREFIX: WCR

## Montana

### BIG COUNTRY BEEF GENETICS

LEO MCDONNELL & JIM BROWN  
BOX 259  
LODGE GRASS, MT 59050  
406-639-2569  
AMSALERS@AOL.COM  
HERD PREFIX: BC

### JOHN GRANDE

148 GRANDE ROAD  
MARTINSDALE, MT 59053  
406-572-3335

### LEO MCDONNELL JR

W-2 RANCH  
13 BULL DRIVE  
COLUMBUS, MT 59019  
406-433-5597  
HERD PREFIX: LM

### MJB RANCH

JIM & MARY BROWN  
BOX 259  
LODGE GRASS, MT 59050  
406-639-2569  
AMSALERS@AOL.COM  
HERD PREFIX: MJB

### MIDLAND BULL TEST

5 BULL DRIVE  
COLUMBUS, MT 59019  
406-322-5597  
BULLS@MIDLANDBULLTEST.COM

### CARROLL & CAROLE NELSON

150 HOWIE ROAD  
BIG TIMBER, MT 59011  
406-690-8731  
CNELSON@MIDDRIVERS.COM  
HERD PREFIX: CCN

### RATY RANCH

KEITH RATY  
27050 CLEAR CREEK ROAD  
CHINOOK, MT 59523  
406-395-4560  
KCRATY@ITSTRIANGLE.COM  
HERD PREFIX: RR

## Nebraska

### ELDON & BLAYNE DOERR

54019 HWY 59  
CREIGHTON, NE 68729  
402-358-5489  
DS59@WEBTV.NET  
HERD PREFIX: EBD

### TRIANGLE T CATTLE

AARON TENNEY  
3200 ELKHORN STREET  
WHITNEY, NE 69367  
208-320-8017  
TENNEYDA@YAHOO.COM  
HERD PREFIX: TEN

### WILSON RANCH

BLAINE G WILSON  
2676 213TH TRAIL  
LAKESIDE, NE 69351  
308-762-6026  
BWLSRANCH@GMAIL.COM  
HERD PREFIX: BW

## New York

### FISH CREEK FARM

JORDAN MACAULAY  
10922 HOXIE ROAD  
WEST EDMESTON, NY 13485  
HERD PREFIX: FCF

### GREEN ACRES ANGUS

RICHARD PEEBLES  
36412 VAN BROOKLIN ROAD  
CHARTHAGE, NY 13619  
315-816-1390  
HERD PREFIX: GAA

### HOXIE HILL FARM

MIKE VANDENBERG  
55 WARD ROAD  
HAMMOND, NY 13646  
315-744-4273  
HERD PREFIX: HHF

### THOMAS O'NEILL

643 COUNTY ROAD 18  
RICHVILLE, NY 13681  
845-235-2569  
TONEILL998@AOL.COM  
HERD PREFIX: TO

## North Carolina

### BAR/E CATTLE COMPANY

D STEPHEN ELMORE  
1235 W MT GILEAD CH ROAD  
CLINTON, NC 28328  
910-385-6200  
SANDBELMORE@CENTURYLINK.NET  
HERD PREFIX: DSE

### NAIRN FARMS SOUTH DEVON LLC

JAMES W NARRON  
PO BOX 1523  
SMITHFIELD, NC 27577  
919-934-0049  
HERD PREFIX: JWN

### TRIPLE M INCORPORATED

TONY, RONNIE, ELEANOR  
& BETTY MATTHIS  
5607 MOSELEY AVENUE  
CLINTON, NC 28328  
910-385-5260  
BEEFMAN@CENTURYLINK.NET  
HERD PREFIX: MMM

## North Dakota

### DAHL LAND & CATTLE CO

JEFF DAHL  
6442 55TH AVE SE  
GACKLE, ND 58442  
701-485-3206  
JLDAHL@DAKTEL.COM  
HERD PREFIX: DLC

### DIAMOND PLUS CATTLE

ROGER & DAVID PRESLER  
6161 56TH AVE SE  
GACKLE, ND 58442  
701-485-3505  
DAKOTADPC@DAKTEL.COM  
HERD PREFIX: DPC

### JALLO STOCK FARM

WAYNE & NATHAN JALLO  
12253 55TH ST NE  
FORDVILLE, ND 58231  
701-384-6153  
WJALLO@POLARCOMM.COM  
HERD PREFIX: JSF

### JOHN KUCHERA

15350 COUNTY ROAD 10  
WYNDMERE, ND 58081  
701-439-2152  
JKUCHERA@RRT.NET  
HERD PREFIX: KL

## Oklahoma

### BOLLENBACH CATTLE COMPANY

A SCOTT BOLLENBACH  
RR 1 BOX 5-A  
KINGFISHER, OK 73750  
405-375-5440  
SCOTTBOLLENBACH@PLDI.NET  
HERD PREFIX: SB

## Oregon

### GNECH FARMS

20990 MORELOCK ROAD  
MALIN, OR 97632  
541-371-0085  
JACKIGNECH@YAHOO.COM  
HERD PREFIX: GJG

## South Dakota

**JAMES E FAULSTICH**  
33795 186TH ST  
HIGHMORE, SD 57345-5305  
605-852-2622  
HERD PREFIX: JF

**GOLDHORN FARM**  
DONALD GOLDHORN  
45454 183RD STREET  
CASTLEWOOD, SD 57223  
605-237-6277  
DGOLDHORN@YAHOO.COM  
HERD PREFIX: GF

## Tennessee

**FLYNN RANCH**  
669 FLYNN LANE  
TOWNSEND, TN 37644  
406-980-0041  
HERD PREFIX: FR

## Texas

**MIKE & CONNIE MALLET**  
10602 N HWY 281  
LAMPASAS, TX 76550  
512-556-1021  
MMCMALLET@OUTLOOK.COM  
HERD PREFIX: MOM

**STEPHENS RANCH**  
PO BOX 1178  
MT. PLEASANT, TX 75456  
682-225-3056  
DRINGULLI@  
BAYAREANEUROPSYCHOLOGY.COM

## Utah

**BUCHANAN RANCHES**  
ROCKY BUCHANAN  
745 SO CANAL RD  
VENICE, UT 84701  
ROCKYBUCHANANI@YAHOO.COM

## Vermont

**CIOFFI CATTLE COMPANY**  
KYLE CIOFFI  
31 CLYDE ALLEN DRIVE  
ST. ALBANS, VT 05478  
802-935-5781  
KLCIOFFI@YAHOO.COM

## Washington

**X-E STOCK RANCH**  
LEE & CONNIE ENGELHARDT  
8354 RD 16 NE  
MOSES LAKE, WA 98837  
509-766-0161  
XESOUTHDEVON@ADESSAOFFICE.COM  
HERD PREFIX: XE

## Wisconsin

**LANCE A BRANTNER**  
N4524 710TH ST  
ELLSWORTH, WI 54011  
651-214-9918  
HERD PREFIX: LAB

**ABE & RENEE FICK**  
W2331 70TH AVE  
MAIDEN ROCK, WI 54750  
715-495-1956  
AFCATTLEI@YAHOO.COM  
HERD PREFIX: FC

**HIDDEN PARADISE RANCH**  
DEVIN HADORN-PAPKE  
S8020 HILLVIEW ROAD  
EAU CLAIRE, WI 54701  
715-271-5018  
HPCATTLE.COM

**KNN FARMS**  
KURT & NETTIE NELSON  
W5137 290TH AVENUE  
BAY CITY, WI 54723  
715-594-3805  
NETNELS@BEVCOMM.NET  
HERD PREFIX: KNN

## VALLEY HILL FARM

TODD LEONARD  
N4524 710 STREET  
ELLSWORTH, WI 54011  
715-273-4520  
TDLEONARD@LIVE.COM  
HERD PREFIX: VHF

## ZIMMER LAND & LIVESTOCK

CODY ZIMMER  
N2701 COUNTY ROAD D  
BAY CITY, WI 54723  
705-307-2216  
HERD PREFIX: ZLL

## Wyoming

**NORTH AMER SOUTH DEVON ASSOC**  
PO BOX 850  
Big Horn, WY 82833  
303-770-3130  
info@southdevon.com  
WWW.SOUTHDEVON.COM

## International

**DIAMOND M SOUTH DEVON**  
ELSIE BEDDOES  
BOX 389  
DUCHESS AB CANADA T0J 020  
403-566-2467  
DMRRANCHING@GMAIL.COM  
HERD PREFIX: DMS

**SAMPSON MCGREGOR STOCK FARM**  
RALPH MCGREGOR & B G SAMPSON  
GENERAL DELIVERY  
IRON RIVER AB CANADA T0A2A0  
780-826-7077  
SMS@XPLORNET.COM  
HERD PREFIX: SMS

**MISSOURI COTEAU CATTLE COMPANY**  
GARY JONES  
BOX 38  
CRANE VALLEY, SK, CANADA, S0H 1B0  
306-631-6274  
JONESRANCH@LIVE.CA

# SADLER CATTLE CO.



Jim, Gail, Dillon and Madeline Sadler  
21140 St. Francis Blvd. • Anoka, MN 55303

Jim: 612-581-8706  
jwbulldog2@gmail.com

Dillon: 763-370-1606  
dillon.j.sadler@gmail.com

## South Devon *Enhancing Heterosis*



### Diamond Plus Cattle

6161 56th Avenue SE | Gackle, ND 58442

David Presler | 701-320-6934  
super\_dave\_03@hotmail.com

Roger & Judy Presler | 701-485-3505  
dakotadpc@daktel.com

**Semen, Bulls,  
Bred and Open  
Females for Sale**



## *Looking Towards the Future*

You can view or purchase our quality  
South Devon Genetics at the National  
Show, DLCC Ranch Sale and Private Treaty.

**2022 Calves Sired By DLCC Gold  
Medal 104G and RP Hondo 51H**

**Joel or Robert Popken**  
33360 220th Street • Swanville, MN 56382  
(320) 547-2202 • jpopken@wisper-wireless.com



**Oakley & Katness**

#### THE NEXT GENERATION



**Fletcher, Oakley, Jeri,  
Nelson & Nena**



**KNN KATNESS 10H - 2021 Iowa State  
Fair - Grand Champion Female in both  
the junior & open show.**

# KNN FARMS

*We strive for cows who transfer prime  
genetics and produce offspring, equal to  
or better than themselves.*



*2022 NASDA youth beef experience donation  
heifer was donated by KNN Farms.*

**Females, bulls & semen available private treaty**

**2 Bulls on test at UW-River Falls -**

**Sale Date: April 16, 2022.**

**View videos at [www.scvbt.com](http://www.scvbt.com)**

**KURT & NETTIE NELSON**

715-594-3805 (HOME) W5137 290TH AVE

651-246-8252 (N) BAY CITY, WI. 54723

651-246-8774 (K) [netnells@bevcomm.net](mailto:netnells@bevcomm.net)



EARN UP TO  
**\$100**

FOR YOUR  
*South Devon photos!*

The North American South Devon Association  
and the South Devon Review are seeking  
outstanding photos that showcase South Devon,  
Poundmakers and South Devon composites.

Submit photos to [southdevon\\_lynn@outlook.com](mailto:southdevon_lynn@outlook.com).  
Questions? Please contact Lynn Giess, 320-250-9121.

## 2021 HALLMARK DAMS

The North American South Devon Association in continuing efforts to stress performance and productivity, recognizes the superior females of the breed, the Hallmark Dams. To identify these cows, emphasis was placed on early puberty, breeding, early calving and superior production over time. A Hallmark Dam is the standard by which all South Devon cows can be judged.

### Hallmark Dams Criteria

1. Dams must have weaned a calf born since January 1, 2020.
2. Dams must be at least 50 percent South Devon and have had a minimum of three calves.
3. The maximum age for a dam to have had her first calf is 30 months of age.
4. A maximum calving interval of 395 days.
5. Every calf produced must have weaning records submitted.
6. A progeny average 205-day adjusted weaning weight ratio of at least 105.

The following list recognizes 67 South Devon cows bred and owned by 10 South Devon breeders. The first table lists each individual Hallmark Dam and her current owner. The table on page 46 shows the 43 sires of these distinguished dams, while the last table lists all breeders of these Hallmark Dams. Once a dam reaches this status she will continue to be recorded in the database as a Hallmark Dam.

| Owner<br>Dam's Name                               | No.<br>Calves | Avg.<br>205-Ratio | Calving<br>Interval | Owner<br>Dam's Name                                    | No.<br>Calves | Avg.<br>205-Ratio | Calving<br>Interval |
|---|---------------|-------------------|---------------------|--|---------------|-------------------|---------------------|
| <b>BIG COUNTRY BEEF GENETICS, LODGE GRASS, MT</b> |               |                   |                     | <b>MJB RANCH, LODGE GRASS, MT</b>                      |               |                   |                     |
| BC SAMMY 5583C (1/2 Blood)                        | 5             | 110.2             | 368                 | MJB FELICITY 7579E (Fullblood)                         | 3             | 107               | 382                 |
| BC ROYALTY 4702B (Fullblood)                      | 6             | 106.8             | 380                 | MJB PROGRESSIVE 6649D (1/2 Blood)                      | 4             | 109.3             | 392                 |
| <b>DAHL LAND &amp; CATTLE CO, GACKLE, ND</b>      |               |                   |                     | MJB CALLIE 5501C (Fullblood)                           | 5             | 105               | 385                 |
| DLC MS ROMEO 745 (Fullblood)                      | 3             | 106               | 375                 | MJB CORA 5598C (1/2 Blood)                             | 5             | 111.4             | 369                 |
| DLC MS ROMEO 746 (Fullblood)                      | 3             | 105.7             | 364                 | MJB PROGRESS 5504C (Fullblood)                         | 5             | 110.2             | 379                 |
| DLC MISS SHILO 692 (Fullblood)                    | 4             | 106               | 374                 | MJB ZENITH 5623C (1/2 Blood)                           | 5             | 105.2             | 378                 |
| DLC SHILO LASS 650 (Fullblood)                    | 4             | 106.5             | 377                 | MJB BLACK DIAMOND 4560B (1/2 Blood)                    | 6             | 111.2             | 373                 |
| DLC MR ROMEO 436 (Purebred)                       | 6             | 108.2             | 359                 | MJB ROYALTY 4530B (3/4 Blood)                          | 6             | 107               | 377                 |
| DLC MS HUDSON 494 (Purebred)                      | 6             | 106.5             | 374                 | MJB ARENA 3507A (3/4 Blood)                            | 7             | 106.3             | 368                 |
| DLC SHILO LASS 305 (Fullblood)                    | 7             | 105.4             | 355                 | CIMARRON DIVA 219Z (Fullblood)                         | 8             | 106.6             | 373                 |
| DLC SHILO LASS 308 (Fullblood)                    | 7             | 106.9             | 365                 | MJB SHEALAN 2534Z (7/8 Blood)                          | 8             | 107.9             | 370                 |
| <b>DLCC RANCH, PIERZ, MN</b>                      |               |                   |                     | MJB YURI 1666Y (Fullblood)                             | 8             | 109.5             | 373                 |
| DLCC BELMONT 49E (Purebred)                       | 3             | 108.7             | 369                 | MJB YAHOO 1543Y (Fullblood)                            | 9             | 105               | 374                 |
| DLCC CONTESSA 82E (1/2 Blood)                     | 3             | 115.7             | 365                 | MJB PERFECT 0582X (3/4 Blood)                          | 10            | 105.3             | 364                 |
| DLCC ELITA 16E (1/2 Blood)                        | 3             | 107.7             | 359                 | <b>NICHOLS FARMS LTD, BRIDGEWATER, IA</b>              |               |                   |                     |
| DLCC ELSIE 25E (1/2 Blood)                        | 3             | 117               | 373                 | NFL PERFECTION DSE063 (Fullblood)                      | 3             | 107               | 360                 |
| DLCC EMMA LEE 32E (Fullblood)                     | 3             | 113.7             | 391                 | NICHOLS LADY DSE004 (Fullblood)                        | 3             | 110               | 373                 |
| DLCC EVITA 20E (Fullblood)                        | 3             | 111               | 370                 | MMM LADY B802 (Fullblood)                              | 5             | 112               | 370                 |
| CCN MONTANA DESTINY D108 (1/2 Blood)              | 4             | 109               | 375                 | NFL BLACKBIRD DSC003 (1/2 Blood)                       | 5             | 109.8             | 368                 |
| DLCC DORY 100D (1/2 Blood)                        | 4             | 110.5             | 355                 | NFL PRIDE DSC011 (1/2 Blood)                           | 5             | 107.8             | 365                 |
| DLCC LOOP 72D (Fullblood)                         | 4             | 109.5             | 366                 | <b>JOEL POPKEN, SWANVILLE, MN</b>                      |               |                   |                     |
| DLCC ROSE 69D (Fullblood)                         | 4             | 115               | 360                 | JP ANNA 45A (Fullblood)                                | 7             | 105.6             | 371                 |
| DLCC SYDNEY 73D (Fullblood)                       | 4             | 109.3             | 358                 | <b>R P FARMS, SWANVILLE, MN</b>                        |               |                   |                     |
| DLC LEGEND LASS 414 (3/4 Blood)                   | 6             | 109.5             | 352                 | RP72E (Fullblood)                                      | 3             | 108               | 394                 |
| DLCC CLAIRE 12B (Fullblood)                       | 6             | 106.3             | 366                 | RP CLOVER 63C (Fullblood)                              | 5             | 107.4             | 369                 |
| DLCC PRECIOUS 39A (Fullblood)                     | 7             | 105.1             | 378                 | RP WINCHESTER 95W (Fullblood)                          | 11            | 105.9             | 367                 |
| DLCC GRACIE 80Y (Fullblood)                       | 9             | 106.4             | 368                 | <b>TRIPLE CROWN SOUTH DEVON FARM, RUSSELLVILLE, MO</b> |               |                   |                     |
| DLCC SIERRA 92Y (Fullblood)                       | 9             | 112.6             | 364                 | TC ESSENCE 702E (Fullblood)                            | 3             | 118.7             | 377                 |
| DLCC WILMA 154W (Purebred)                        | 10            | 105.6             | 366                 | TC EXPRESS 760E (Fullblood)                            | 3             | 105.3             | 387                 |
| DLCC MANDI 55U (Fullblood)                        | 12            | 110.2             | 365                 | TC DARLIN' 634D (Fullblood)                            | 4             | 113.3             | 372                 |
| DLCC HARMONY 59T (Fullblood)                      | 13            | 109.7             | 367                 | TC CAMPBELL 523C (Fullblood)                           | 5             | 107.2             | 373                 |
| <b>ABE AND RENEE FICK, MAIDEN ROCK, WI</b>        |               |                   |                     | TC BARBIE 430B (Fullblood)                             | 6             | 143.3             | 368                 |
| KNN 26B (3/4 Blood)                               | 6             | 106.5             | 365                 | CIMARRON CLIMAX 302A (Fullblood)                       | 7             | 105.9             | 364                 |
| <b>JVM CATTLE COMPANY, PELLA, IA</b>              |               |                   |                     | TC APACHE (Fullblood)                                  | 7             | 105.1             | 365                 |
| TLC BELLE 602D (3/4 Blood)                        | 3             | 108.7             | 364                 | CIMARRON SPLENDOR 241Z (Fullblood)                     | 8             | 107.3             | 370                 |
| JVM YANCY 001Y (Fullblood)                        | 9             | 105.8             | 365                 | TC ZONE (Fullblood)                                    | 8             | 106.5             | 374                 |
|   |               |                   |                     | CIMARRON SULTRESS 152Y (Fullblood)                     | 9             | 105.2             | 363                 |
|   |               |                   |                     | TC YEARN (Fullblood)                                   | 9             | 108.9             | 366                 |
|   |               |                   |                     | TC YES (Fullblood)                                     | 9             | 109               | 365                 |

## 2021 HALLMARK SIRES

| Sire's Name            | Reg. Number | Percentage  | No. Dams | Sire's Name              | Reg. Number | Percentage  | No. Dams |
|------------------------|-------------|-------------|----------|--------------------------|-------------|-------------|----------|
| BC PROGRESS 315U       | 194458      | (Fullblood) | 7        | DLCC CHANCE 52X          | 198753      | (Purebred)  | 1        |
| MMM UNTOUCHABLE W810   | 199405      | (Purebred)  | 4        | DLCC COPY CAT 69C        | 208807      | (Fullblood) | 1        |
| CIMARRON REBEL 738T    | 192356      | (Purebred)  | 3        | DLCC HUDSON 82U          | 193574      | (7/8 Blood) | 1        |
| DLC SHILO LAD 1100     | 200083      | (Fullblood) | 3        | DLCC OO LALA 62L         | 173690      | (Purebred)  | 1        |
| DLCC DODGE CITY 78Y    | 200720      | (Purebred)  | 3        | DLCC OPEN RANGE 3R       | 186509      | (7/8 Blood) | 1        |
| MJB ROMEO 337Z         | 201824      | (Purebred)  | 3        | DLCC POLLED PRO 111H     | 166186      | (Fullblood) | 1        |
| MJB SHUR LOC 106S      | 188977      | (Fullblood) | 3        | DLCC SURE THING TOO 119T | 192106      | (3/4 Blood) | 1        |
| DLC ROYAL LAD 1139     | 200031      | (Fullblood) | 2        | DLCC SURE-ENUF           | 174528      | (Fullblood) | 1        |
| DLCC BELMONT 25B       | 206413      | (Fullblood) | 2        | DLCC TWO STEP 84B        | 205508      | (Purebred)  | 1        |
| DLCC WHIPLASH 1Y       | 199722      | (Purebred)  | 2        | GUM HILL RED 530         | 208776      | (Fullblood) | 1        |
| LCOC TRINITY JO64B     | 210338      | (3/4 Blood) | 2        | LEACHMAN YOSEMITE X730Y  | 204573      | (3/4 Blood) | 1        |
| TC XPLOSION            | 198811      | (Fullblood) | 2        | MJB LEGEND 338X          | 198128      | (3/4 Blood) | 1        |
| BC ZENITH 104Z         | 203336      | (Fullblood) | 1        | NICHOLS MAJESTIC Y808    | 203588      | (Fullblood) | 1        |
| CIMARRON AVENGER 135Y  | 203209      | (Fullblood) | 1        | NICHOLS T800             | 194550      | (Purebred)  | 1        |
| CIMARRON BOLD OKIE 20X | 200992      | (Fullblood) | 1        | SBCC NOBLE LEGEND 314I   | 178627      | (Purebred)  | 1        |
| CIMARRON CARUSO 923W   | 198943      | (Fullblood) | 1        | SBCC UNDENIABLE 8122     | 195319      | (Purebred)  | 1        |
| CIMARRON CASSANOVA 23X | 201045      | (Fullblood) | 1        | TC BUCKAROO 412B         | 206540      | (Fullblood) | 1        |
| CIMARRON FOREMOST 320A | 204509      | (Fullblood) | 1        | TC SARGE                 | 188523      | (Fullblood) | 1        |
| CIMARRON REBEL 941W    | 198091      | (Purebred)  | 1        | TC YADIER                | 200213      | (Fullblood) | 1        |
| CIMARRON REBEL 944W    | 198898      | (Purebred)  | 1        | TLC MR THOMPSON          | 201792      | (3/4 Blood) | 1        |
| DLC MR SHILO 496       | 206719      | (Fullblood) | 1        | TLC NEWT 945W            | 201772      | (Purebred)  | 1        |
| DLCC BATTLECRY 27B     | 206340      | (Fullblood) | 1        |                          |             |             |          |

## 2021 HALLMARK BREEDERS

BIG COUNTRY BEEF GENETICS, LODGE GRASS, MT ..... 2  
 BOLLENBACH CATTLE COMPANY, KINGFISHER, OK ..... 4  
 DAHL LAND & CATTLE CO, GACKLE, ND..... 9  
 DLCC RANCH, PIERZ, MN..... 16  
 LEAH GIESS, PIERZ, MN ..... 1  
 JVM CATTLE COMPANY, PELLA, IA..... 1  
 KNN FARMS, BAY CITY, WI..... 1  
 MJB RANCH, LODGE GRASS, MT ..... 13

CARROLL & CAROLE NELSON, BIG TIMBER, MT ..... 1  
 NICHOLS FARMS LTD, BRIDGEWATER, IA ..... 4  
 JOEL POPKEN, SWANVILLE, MN ..... 1  
 R P FARMS, SWANVILLE, MN ..... 3  
 THOMPSON LAND & CATTLE CO., MOTLEY, MN..... 1  
 TRIPLE CROWN SOUTH DEVON FARM, RUSSELLVILLE, MO..... 9  
 TONY RONNIE ELEANOR BETTY MATT, CLINTON, NC ..... 1

## PERCENTILE CHARTS

### ALL SIREs

|     | CED  | BW   | WW | YW  | Milk | MWW | CEM  | REA   | MARB | FAT   | CWT   | DOC | STAY |
|-----|------|------|----|-----|------|-----|------|-------|------|-------|-------|-----|------|
| 5%  | 15.4 | -2.8 | 72 | 111 | 26   | 56  | 9.3  | 0.60  | 0.5  | 0.03  | 36.2  | 15  | 20   |
| 10% | 13.6 | -2.2 | 67 | 99  | 23   | 52  | 7.7  | 0.47  | 0.4  | 0.01  | 24.0  | 14  | 18   |
| 15% | 13.1 | -1.4 | 63 | 92  | 22   | 49  | 6.9  | 0.42  | 0.3  | -0.01 | 17.7  | 13  | 17   |
| 20% | 12.4 | -0.8 | 60 | 86  | 21   | 47  | 6.6  | 0.38  | 0.2  | -0.02 | 13.3  | 12  | 16   |
| 25% | 11.9 | -0.3 | 57 | 82  | 20   | 45  | 6.2  | 0.35  | 0.1  | -0.05 | 8.5   | 11  | 15   |
| 30% | 11.3 | 0.2  | 55 | 77  | 19   | 44  | 5.6  | 0.34  | 0    | -0.06 | 2.5   | 11  | 15   |
| 35% | 10.7 | 0.7  | 52 | 73  | 18   | 42  | 5.0  | 0.33  | -0.1 | -0.08 | 0     | 10  | 14   |
| 40% | 10.2 | 1.1  | 50 | 69  | 17   | 41  | 4.4  | 0.31  | -0.2 | -0.09 | -6.5  | 10  | 13   |
| 45% | 9.7  | 1.5  | 48 | 65  | 17   | 40  | 3.9  | 0.30  | -0.2 | -0.10 | -11.2 | 9   | 13   |
| 50% | 9.2  | 1.6  | 45 | 60  | 16   | 39  | 3.4  | 0.30  | -0.3 | -0.10 | -14.3 | 9   | 12   |
| 55% | 8.6  | 1.9  | 43 | 56  | 16   | 38  | 3.0  | 0.29  | -0.3 | -0.10 | -16.4 | 9   | 11   |
| 60% | 8.2  | 2.3  | 41 | 52  | 15   | 37  | 2.7  | 0.27  | -0.3 | -0.11 | -18.4 | 9   | 10   |
| 65% | 8.0  | 2.6  | 39 | 49  | 15   | 36  | 2.1  | 0.26  | -0.3 | -0.11 | -19.8 | 8   | 9    |
| 70% | 7.5  | 3.0  | 37 | 45  | 14   | 35  | 1.6  | 0.23  | -0.3 | -0.11 | -21.1 | 8   | 8    |
| 75% | 7.0  | 3.4  | 35 | 43  | 13   | 33  | 1.1  | 0.19  | -0.3 | -0.11 | -21.7 | 7   | 7    |
| 80% | 6.4  | 3.7  | 35 | 41  | 11   | 32  | 0.5  | 0.15  | -0.3 | -0.11 | -22.8 | 7   | 5    |
| 85% | 5.5  | 4.2  | 32 | 38  | 10   | 30  | -0.2 | 0.06  | -0.3 | -0.12 | -23.7 | 6   | 5    |
| 90% | 4.5  | 4.9  | 29 | 32  | 8    | 28  | -1.1 | 0.01  | -0.3 | -0.12 | -24.9 | 6   | 4    |
| 95% | 3.0  | 5.9  | 22 | 22  | 6    | 26  | -2.6 | -0.11 | -0.4 | -0.12 | -26.7 | 5   | 4    |

### ALL DAMS

|     | CED  | BW   | WW | YW | Milk | MWW | CEM  | REA  | MARB | FAT   | CWT   | DOC | STAY |
|-----|------|------|----|----|------|-----|------|------|------|-------|-------|-----|------|
| 5%  | 13.8 | -1.9 | 66 | 97 | 25   | 53  | 7.8  | 0.49 | 0.3  | -0.01 | 22.5  | 13  | 19   |
| 10% | 12.9 | -1.3 | 62 | 89 | 23   | 49  | 6.9  | 0.43 | 0.2  | -0.04 | 14.3  | 12  | 18   |
| 15% | 12.4 | -0.7 | 59 | 83 | 22   | 47  | 6.4  | 0.40 | 0.1  | -0.05 | 9.4   | 11  | 17   |
| 20% | 11.9 | -0.3 | 56 | 78 | 21   | 45  | 6.1  | 0.37 | 0    | -0.06 | 3.4   | 11  | 16   |
| 25% | 11.4 | 0.1  | 53 | 74 | 20   | 44  | 5.6  | 0.35 | -0.1 | -0.07 | -0.1  | 10  | 15   |
| 30% | 11.0 | 0.5  | 51 | 70 | 19   | 42  | 5.1  | 0.34 | -0.1 | -0.08 | -4.1  | 10  | 14   |
| 35% | 10.6 | 0.8  | 49 | 67 | 18   | 41  | 4.6  | 0.32 | -0.2 | -0.09 | -7.1  | 9   | 13   |
| 40% | 10.1 | 1.1  | 47 | 63 | 18   | 40  | 4.2  | 0.32 | -0.2 | -0.09 | -9.8  | 9   | 13   |
| 45% | 9.7  | 1.4  | 45 | 60 | 17   | 39  | 3.7  | 0.31 | -0.2 | -0.10 | -12.4 | 9   | 12   |
| 50% | 9.3  | 1.7  | 44 | 57 | 16   | 38  | 3.3  | 0.30 | -0.2 | -0.10 | -14.1 | 9   | 11   |
| 55% | 8.9  | 2.0  | 42 | 54 | 15   | 37  | 2.9  | 0.29 | -0.3 | -0.10 | -15.9 | 8   | 11   |
| 60% | 8.5  | 2.3  | 40 | 51 | 15   | 36  | 2.4  | 0.28 | -0.3 | -0.10 | -17.5 | 8   | 10   |
| 65% | 8.0  | 2.6  | 38 | 48 | 14   | 35  | 2    | 0.27 | -0.3 | -0.11 | -18.7 | 8   | 9    |
| 70% | 7.6  | 2.9  | 37 | 45 | 13   | 33  | 1.6  | 0.26 | -0.3 | -0.11 | -20.0 | 7   | 8    |
| 75% | 7.1  | 3.2  | 35 | 43 | 12   | 32  | 1.1  | 0.24 | -0.3 | -0.11 | -21.0 | 7   | 7    |
| 80% | 6.6  | 3.6  | 34 | 40 | 11   | 31  | 0.5  | 0.22 | -0.3 | -0.11 | -22.0 | 7   | 6    |
| 85% | 5.9  | 4.0  | 32 | 37 | 10   | 29  | -0.1 | 0.18 | -0.3 | -0.11 | -23.0 | 6   | 4    |
| 90% | 5.0  | 4.6  | 30 | 33 | 8    | 27  | -1   | 0.13 | -0.3 | -0.12 | -24.2 | 6   | 4    |
| 95% | 3.6  | 5.5  | 26 | 28 | 6    | 24  | -2.4 | 0.04 | -0.4 | -0.12 | -26.1 | 5   | 4    |

## 2021 SIRE SUMMARY - MAIN LISTING

| Name                                     | Reg#  | DOB     | %  | #Herds                   | CED         | BW          | WW        | YW         | Milk                   | MWW       | CEM         | Marb        | CW           | Fat          | REA          |
|--|-------|---------|----|--------------------------|-------------|-------------|-----------|------------|------------------------|-----------|-------------|-------------|--------------|--------------|--------------|
|  |       |         |    | #Dcalves                 | Acc         | Acc         | Acc       | Acc        | Acc                    |           | Acc         | Acc         | Acc          | Acc          | Acc          |
|  | Color | H/P/S   |    | Sire                     |             |             | Owner(s)  | Dam        |                        |           |             |             |              |              |              |
| <b>BC PROGRESS 315U</b>                  |       |         |    | <b>18</b>                | <b>5.5</b>  | <b>1.5</b>  | <b>77</b> | <b>135</b> | <b>20</b>              | <b>58</b> | <b>5.3</b>  | <b>-0.1</b> | <b>2.3</b>   | <b>-0.11</b> | <b>0.43</b>  |
| 194458                                   |       | 1/28/08 | FB | 253                      | 0.67        | 0.84        | 0.80      | 0.77       | 0.67                   |           | 0.57        | 0.69        | 0.72         | 0.62         | 0.69         |
| BLK                                      |       | POLLED  |    | MJB ROMEO 125R           |             |             |           |            | BC SASSY 6714S         |           |             |             |              |              |              |
| BIG COUNTRY BEEF GENETICS LODGE GRASS MT |       |         |    |                          |             |             |           |            |                        |           |             |             |              |              |              |
| <b>BGC P2E</b>                           |       |         |    | <b>1</b>                 | <b>10.6</b> | <b>2.6</b>  | <b>68</b> | <b>92</b>  | <b>16</b>              | <b>50</b> | <b>3.1</b>  | <b>-0.1</b> | <b>-9.1</b>  | <b>-0.11</b> | <b>0.47</b>  |
| 212550                                   |       | 2/27/17 | PB |                          | 0.41        | 0.48        | 0.46      | 0.45       | 0.12                   |           | 0.17        | 0.32        | 0.43         | 0.29         | 0.37         |
| RED                                      |       | POLLED  |    | TLC DEETZ 9012           |             |             |           |            | BGC SIB                |           |             |             |              |              |              |
| BILLIE G CULP NEOSHO MO                  |       |         |    |                          |             |             |           |            |                        |           |             |             |              |              |              |
| <b>CIMARRON AVENGER 135Y</b>             |       |         |    | <b>5</b>                 | <b>4.5</b>  | <b>3.4</b>  | <b>69</b> | <b>100</b> | <b>11</b>              | <b>45</b> | <b>-4.5</b> | <b>-0.4</b> | <b>-9.6</b>  | <b>-0.09</b> | <b>0.31</b>  |
| 203209                                   |       | 3/9/11  | FB | 48                       | 0.32        | 0.75        | 0.70      | 0.69       | 0.43                   |           | 0.37        | 0.25        | 0.46         | 0.15         | 0.40         |
| RED                                      |       | POLLED  |    | CIMARRON CARUSO 923W     |             |             |           |            | CIMARRON SAVANAH 538R  |           |             |             |              |              |              |
| BOLLENBACH CATTLE COMPANY KINGFISHER OK  |       |         |    |                          |             |             |           |            |                        |           |             |             |              |              |              |
| <b>CIMARRON BOLD ONE 404B</b>            |       |         |    | <b>3</b>                 | <b>16.3</b> | <b>-2.6</b> | <b>52</b> | <b>69</b>  | <b>17</b>              | <b>43</b> | <b>3.9</b>  | <b>-0.2</b> | <b>-23.7</b> | <b>-0.10</b> | <b>0.28</b>  |
| 207638                                   |       | 2/1/14  | FB | 10                       | 0.38        | 0.69        | 0.60      | 0.57       | 0.29                   |           | 0.29        | 0.15        | 0.39         | 0.14         | 0.34         |
| RED                                      |       | POLLED  |    | CIMARRON BOLD OKIE 20X   |             |             |           |            | CIMARRON DESIRE 235Z   |           |             |             |              |              |              |
| BOLLENBACH CATTLE COMPANY KINGFISHER OK  |       |         |    |                          |             |             |           |            |                        |           |             |             |              |              |              |
| <b>CIMARRON DEFENDER 443B</b>            |       |         |    | <b>3</b>                 | <b>4.4</b>  | <b>2.7</b>  | <b>67</b> | <b>93</b>  | <b>17</b>              | <b>51</b> | <b>-2.6</b> | <b>-0.1</b> | <b>-8.3</b>  | <b>-0.11</b> | <b>0.55</b>  |
| 207528                                   |       | 3/7/14  | FB | 5                        | 0.54        | 0.70        | 0.66      | 0.64       | 0.25                   |           | 0.29        | 0.40        | 0.52         | 0.28         | 0.47         |
| BLK                                      |       | POLLED  |    | CIMARRON CITATION 118Y   |             |             |           |            | BIEBER CINNAMON 50P    |           |             |             |              |              |              |
| BOLLENBACH CATTLE COMPANY KINGFISHER OK  |       |         |    |                          |             |             |           |            |                        |           |             |             |              |              |              |
| <b>CIMARRON REBEL 738T</b>               |       |         |    | <b>1</b>                 | <b>12.4</b> | <b>0.7</b>  | <b>67</b> | <b>101</b> | <b>4</b>               | <b>37</b> | <b>6.7</b>  | <b>-0.5</b> | <b>-10.4</b> | <b>-0.12</b> | <b>0.53</b>  |
| 192356                                   |       | 2/22/07 | PB | 123                      | 0.26        | 0.59        | 0.52      | 0.54       | 0.42                   |           | 0.23        | 0.22        | 0.42         | 0.16         | 0.38         |
| RED                                      |       | POLLED  |    | MJB ROUNDUP 208R         |             |             |           |            | CIMARRON BELLE 362N    |           |             |             |              |              |              |
| BOLLENBACH CATTLE COMPANY KINGFISHER OK  |       |         |    |                          |             |             |           |            |                        |           |             |             |              |              |              |
| <b>CIMARRON REBEL 941W</b>               |       |         |    | <b>4</b>                 | <b>7.4</b>  | <b>2.6</b>  | <b>69</b> | <b>102</b> | <b>15</b>              | <b>50</b> | <b>8.8</b>  | <b>-0.4</b> | <b>-9.6</b>  | <b>-0.12</b> | <b>0.48</b>  |
| 198091                                   |       | 2/17/09 | PB | 108                      | 0.42        | 0.67        | 0.61      | 0.61       | 0.47                   |           | 0.38        | 0.34        | 0.48         | 0.28         | 0.46         |
| BLK                                      |       | POLLED  |    | MJB ROUNDUP 208R         |             |             |           |            | CIMARRON PLAYMATE 136L |           |             |             |              |              |              |
| BOLLENBACH CATTLE COMPANY KINGFISHER OK  |       |         |    |                          |             |             |           |            |                        |           |             |             |              |              |              |
| <b>CIMARRON SUPERIOR 261</b>             |       |         |    | <b>14</b>                | <b>4.6</b>  | <b>3.5</b>  | <b>65</b> | <b>91</b>  | <b>11</b>              | <b>44</b> | <b>-3.1</b> | <b>-0.1</b> | <b>-14.8</b> | <b>-0.10</b> | <b>0.27</b>  |
| 119261                                   |       | 3/27/92 | FB | 249                      | 0.35        | 0.69        | 0.64      | 0.67       | 0.56                   |           | 0.39        | 0.28        | 0.41         | 0.23         | 0.40         |
| RED                                      |       | POLLED  |    | CIMARRON RULER 815       |             |             |           |            | CIMARRON EMPRESS 871   |           |             |             |              |              |              |
| BOLLENBACH CATTLE COMPANY KINGFISHER OK  |       |         |    |                          |             |             |           |            |                        |           |             |             |              |              |              |
| <b>CIMARRON SUPERIOR 442</b>             |       |         |    | <b>29</b>                | <b>7.7</b>  | <b>1.6</b>  | <b>59</b> | <b>96</b>  | <b>15</b>              | <b>45</b> | <b>1.1</b>  | <b>0.1</b>  | <b>-16.3</b> | <b>-0.06</b> | <b>0.09</b>  |
| 125263                                   |       | 3/27/94 | FB | 996                      | 0.81        | 0.89        | 0.84      | 0.85       | 0.81                   |           | 0.69        | 0.66        | 0.74         | 0.58         | 0.70         |
| RED                                      |       | POLLED  |    | CIMARRON RULER 815       |             |             |           |            | CIMARRON SUNSET 935    |           |             |             |              |              |              |
| BOLLENBACH CATTLE COMPANY KINGFISHER OK  |       |         |    |                          |             |             |           |            |                        |           |             |             |              |              |              |
| <b>CIMARRON TRIUMPH 705T</b>             |       |         |    | <b>7</b>                 | <b>16.2</b> | <b>-3.8</b> | <b>25</b> | <b>40</b>  | <b>26</b>              | <b>38</b> | <b>4.2</b>  | <b>-0.1</b> | <b>-36.9</b> | <b>-0.08</b> | <b>-0.06</b> |
| 192390                                   |       | 1/29/07 | FB | 136                      | 0.49        | 0.75        | 0.68      | 0.70       | 0.51                   |           | 0.40        | 0.22        | 0.47         | 0.20         | 0.42         |
| BLK                                      |       | POLLED  |    | CIMARRON BARNBURNER 545R |             |             |           |            | CIMARRON LOLITA 521R   |           |             |             |              |              |              |
| BOLLENBACH CATTLE COMPANY KINGFISHER OK  |       |         |    |                          |             |             |           |            |                        |           |             |             |              |              |              |
| <b>COTEAU BEAVER SUNRISE 510</b>         |       |         |    | <b>1</b>                 | <b>12.2</b> | <b>2.0</b>  | <b>50</b> | <b>75</b>  | <b>11</b>              | <b>36</b> | <b>3.9</b>  | <b>-0.3</b> | <b>-7.7</b>  | <b>-0.11</b> | <b>0.39</b>  |
| 203370                                   |       | 2/24/12 | PB | 10                       | 0.28        | 0.58        | 0.57      | 0.56       | 0.30                   |           | 0.24        | 0.10        | 0.36         | 0.10         | 0.30         |
| RED                                      |       | POLLED  |    | HHSD BEAVER 1ST          |             |             |           |            | COTEAU SUNRISE 85      |           |             |             |              |              |              |
| DIAMOND PLUS CATTLE GACKLE ND            |       |         |    |                          |             |             |           |            |                        |           |             |             |              |              |              |
| <b>COTEAU SHUR LAD A032</b>              |       |         |    | <b>1</b>                 | <b>10.2</b> | <b>0.3</b>  | <b>57</b> | <b>80</b>  | <b>15</b>              | <b>44</b> | <b>2.2</b>  | <b>-0.2</b> | <b>-19.2</b> | <b>-0.11</b> | <b>0.49</b>  |
| 204884                                   |       | 2/23/13 | PB | 4                        | 0.20        | 0.51        | 0.49      | 0.49       | 0.20                   |           | 0.18        | 0.17        | 0.32         | 0.15         | 0.28         |
| RED                                      |       | SCURRED |    | MJB SHUR LOC 106S        |             |             |           |            | COTEAU LADY X653       |           |             |             |              |              |              |
| DIAMOND PLUS CATTLE GACKLE ND            |       |         |    |                          |             |             |           |            |                        |           |             |             |              |              |              |
| <b>DLC BLACKFOOT LAD 226</b>             |       |         |    | <b>1</b>                 | <b>10.8</b> | <b>1.3</b>  | <b>63</b> | <b>94</b>  | <b>16</b>              | <b>47</b> | <b>5</b>    | <b>-0.1</b> | <b>-4.1</b>  | <b>-0.09</b> | <b>0.44</b>  |
| 214210                                   |       | 4/20/18 | FB |                          | 0.25        | 0.48        | 0.47      | 0.47       | 0.18                   |           | 0.17        | 0.17        | 0.33         | 0.16         | 0.28         |
| BLK                                      |       | POLLED  |    | MJB BLACKFOOT 546C       |             |             |           |            | DLC MS HUDSON 406      |           |             |             |              |              |              |
| DAHL LAND & CATTLE CO GACKLE ND          |       |         |    |                          |             |             |           |            |                        |           |             |             |              |              |              |
| <b>DLC MR BLACKFOOT 300</b>              |       |         |    | <b>2</b>                 | <b>9.6</b>  | <b>1.9</b>  | <b>54</b> | <b>82</b>  | <b>21</b>              | <b>47</b> | <b>4.8</b>  | <b>0</b>    | <b>5.0</b>   | <b>-0.07</b> | <b>0.43</b>  |
| 212830                                   |       | 4/1/17  | PB |                          | 0.54        | 0.69        | 0.62      | 0.60       | 0.14                   |           | 0.25        | 0.28        | 0.49         | 0.30         | 0.45         |
| BLK                                      |       | POLLED  |    | MJB BLACKFOOT 546C       |             |             |           |            | DLC LEGEND LASS 423    |           |             |             |              |              |              |
| DAHL LAND & CATTLE CO GACKLE ND          |       |         |    |                          |             |             |           |            |                        |           |             |             |              |              |              |
| <b>DLC MR BLACKFOOT 779</b>              |       |         |    | <b>1</b>                 | <b>8.8</b>  | <b>1.4</b>  | <b>71</b> | <b>108</b> | <b>20</b>              | <b>56</b> | <b>3.4</b>  | <b>-0.1</b> | <b>0.5</b>   | <b>-0.09</b> | <b>0.55</b>  |
| 212837                                   |       | 5/3/17  | PB |                          | 0.21        | 0.43        | 0.45      | 0.46       | 0.13                   |           | 0.15        | 0.17        | 0.33         | 0.17         | 0.29         |
| BLK                                      |       | POLLED  |    | MJB BLACKFOOT 546C       |             |             |           |            | DLC MS HUDSON 439      |           |             |             |              |              |              |
| DAHL LAND & CATTLE CO GACKLE ND          |       |         |    |                          |             |             |           |            |                        |           |             |             |              |              |              |
| REED ZIMMERMAN NAPOLEON ND               |       |         |    |                          |             |             |           |            |                        |           |             |             |              |              |              |

## 2021 SIRE SUMMARY - MAIN LISTING

| Name  | DOB     | %  | #Herds                   | CED         | BW          | WW        | YW                    | Milk      | MWW       | CEM         | Marb        | CW           | Fat          | REA          |
|---|---------|----|--------------------------|-------------|-------------|-----------|-----------------------|-----------|-----------|-------------|-------------|--------------|--------------|--------------|
| Reg#  | H/P/S   |    | #Dcalves                 | Acc         | Acc         | Acc       | Acc                   | Acc       |           | Acc         | Acc         | Acc          | Acc          | Acc          |
| Color   |         |    | Sire                     |             |             |           | Dam                   |           |           |             |             |              |              |              |
| Breeder   |         |    |                          |             |             | Owner(s)  |                       |           |           |             |             |              |              |              |
| <b>DLCC MR SHILO 164</b>  |         |    | <b>1</b>                 | <b>4.4</b>  | <b>4.0</b>  | <b>74</b> | <b>108</b>            | <b>17</b> | <b>53</b> | <b>-3.9</b> | <b>-0.2</b> | <b>-3.6</b>  | <b>-0.09</b> | <b>0.45</b>  |
| 210079  | 4/23/16 | FB | 8                        | 0.20        | 0.55        | 0.53      | 0.55                  | 0.25      |           | 0.21        | 0.17        | 0.35         | 0.14         | 0.30         |
| RED   | POLLED  |    | DLCC SHILO LAD 1100      |             |             |           | DLCC MISS HUDSON 112  |           |           |             |             |              |              |              |
| DAHL LAND & CATTLE CO GACKLE ND   |         |    |                          |             |             |           |                       |           |           |             |             |              |              |              |
| <b>DLCC SHILO LAD 112</b>   |         |    | <b>1</b>                 | <b>4.8</b>  | <b>4.2</b>  | <b>75</b> | <b>113</b>            | <b>15</b> | <b>53</b> | <b>-1.0</b> | <b>-0.2</b> | <b>5.9</b>   | <b>-0.09</b> | <b>0.35</b>  |
| 212810  | 4/17/17 | FB | 1                        | 0.20        | 0.54        | 0.53      | 0.54                  | 0.16      |           | 0.16        | 0.16        | 0.33         | 0.12         | 0.31         |
| RED   | SCURRED |    | DLCC SHILO LAD 1100      |             |             |           | DLCC MISS LEGACY 317  |           |           |             |             |              |              |              |
| DAHL LAND & CATTLE CO GACKLE ND   |         |    |                          |             |             |           |                       |           |           |             |             |              |              |              |
| <b>DLCC BATTLECRY 27B</b>   |         |    | <b>9</b>                 | <b>11.3</b> | <b>0.8</b>  | <b>52</b> | <b>70</b>             | <b>23</b> | <b>49</b> | <b>5.7</b>  | <b>-0.1</b> | <b>-24.7</b> | <b>-0.11</b> | <b>0.31</b>  |
| 206340  | 3/26/14 | FB | 13                       | 0.24        | 0.53        | 0.47      | 0.48                  | 0.25      |           | 0.18        | 0.19        | 0.34         | 0.20         | 0.300        |
| RED   | POLLED  |    | DLCC PATRIOT 51Y         |             |             |           | DLCC TOPAZ 20Y        |           |           |             |             |              |              |              |
| DLCC RANCH PIERZ MN   |         |    |                          |             |             |           |                       |           |           |             |             |              |              |              |
| <b>DLCC BELMONT 25B</b>   |         |    | <b>7</b>                 | <b>7.4</b>  | <b>0.9</b>  | <b>73</b> | <b>116</b>            | <b>14</b> | <b>51</b> | <b>-0.1</b> | <b>-0.2</b> | <b>-4.9</b>  | <b>-0.09</b> | <b>0.36</b>  |
| 206413  | 3/24/14 | FB | 22                       | 0.27        | 0.53        | 0.47      | 0.48                  | 0.32      |           | 0.25        | 0.27        | 0.41         | 0.22         | 0.36         |
| BLK   | POLLED  |    | DLCC WHIPLASH 1Y         |             |             |           | DLCC MANDI 2X         |           |           |             |             |              |              |              |
| LEAH GIESS PIERZ MN   |         |    |                          |             |             |           |                       |           |           |             |             |              |              |              |
| <b>DLCC BOLERO 14B</b>  |         |    | <b>29</b>                | <b>9.1</b>  | <b>2.2</b>  | <b>57</b> | <b>90</b>             | <b>-7</b> | <b>22</b> | <b>4.4</b>  | <b>-0.3</b> | <b>-32.1</b> | <b>-0.08</b> | <b>-0.12</b> |
| 118536  | 3/21/92 | PB | 176                      | 0.68        | 0.77        | 0.71      | 0.72                  | 0.61      |           | 0.49        | 0.34        | 0.48         | 0.21         | 0.47         |
| RED   | POLLED  |    | LEACHMAN MR MONTANA 872U |             |             |           | FOXY LADY             |           |           |             |             |              |              |              |
| DLCC RANCH PIERZ MN   |         |    |                          |             |             |           |                       |           |           |             |             |              |              |              |
| <b>DLCC CADET 4C</b>  |         |    | <b>1</b>                 | <b>9.3</b>  | <b>2.8</b>  | <b>60</b> | <b>80</b>             | <b>10</b> | <b>40</b> | <b>2.6</b>  | <b>0</b>    | <b>-18.9</b> | <b>-0.08</b> | <b>0.24</b>  |
| 208409  | 2/22/15 | PB | 4                        | 0.26        | 0.51        | 0.49      | 0.49                  | 0.20      |           | 0.20        | 0.23        | 0.37         | 0.21         | 0.32         |
| RED   | POLLED  |    | DLCC ADMIRAL 12A         |             |             |           | DLCC MAMMY 46A        |           |           |             |             |              |              |              |
| LEAH GIESS PIERZ MN   |         |    |                          |             |             |           |                       |           |           |             |             |              |              |              |
| <b>DLCC CHECKERS 12C</b>  |         |    | <b>6</b>                 | <b>10.7</b> | <b>-0.4</b> | <b>55</b> | <b>80</b>             | <b>11</b> | <b>39</b> | <b>3.6</b>  | <b>0</b>    | <b>-12.8</b> | <b>-0.09</b> | <b>0.27</b>  |
| 208860  | 3/17/15 | FB | 11                       | 0.49        | 0.61        | 0.58      | 0.56                  | 0.25      |           | 0.25        | 0.36        | 0.51         | 0.30         | 0.48         |
| RED   | POLLED  |    | DLCC ADMIRAL 12A         |             |             |           | DLCC POPPY 108Z       |           |           |             |             |              |              |              |
| LEAH GIESS PIERZ MN   |         |    |                          |             |             |           |                       |           |           |             |             |              |              |              |
| <b>DLCC COPY CAT 69C</b>  |         |    | <b>7</b>                 | <b>11.8</b> | <b>0.7</b>  | <b>62</b> | <b>98</b>             | <b>11</b> | <b>42</b> | <b>4.1</b>  | <b>-0.1</b> | <b>-6.9</b>  | <b>-0.09</b> | <b>0.23</b>  |
| 208807  | 4/9/15  | FB | 28                       | 0.30        | 0.63        | 0.58      | 0.59                  | 0.32      |           | 0.25        | 0.28        | 0.41         | 0.23         | 0.35         |
| BLK   | POLLED  |    | DLCC DODGE CITY 78Y      |             |             |           | DLCC TOPAZ 20Y        |           |           |             |             |              |              |              |
| DLCC RANCH PIERZ MN   |         |    |                          |             |             |           |                       |           |           |             |             |              |              |              |
| <b>DLCC COULEE 97C</b>  |         |    | <b>6</b>                 | <b>12.7</b> | <b>-2.3</b> | <b>61</b> | <b>86</b>             | <b>19</b> | <b>50</b> | <b>4.0</b>  | <b>0</b>    | <b>-11.0</b> | <b>-0.07</b> | <b>0.07</b>  |
| 208805  | 6/1/15  | FB | 13                       | 0.30        | 0.63        | 0.59      | 0.58                  | 0.32      |           | 0.24        | 0.27        | 0.43         | 0.20         | 0.37         |
| BLK   | POLLED  |    | DLCC DODGE CITY 78Y      |             |             |           | DLCC CLARE 1X         |           |           |             |             |              |              |              |
| DLCC RANCH PIERZ MN   |         |    |                          |             |             |           |                       |           |           |             |             |              |              |              |
| <b>DLCC COWBOY JO 81C</b>   |         |    | <b>13</b>                | <b>11</b>   | <b>-1.5</b> | <b>55</b> | <b>83</b>             | <b>11</b> | <b>38</b> | <b>3.0</b>  | <b>-0.1</b> | <b>-14.9</b> | <b>-0.06</b> | <b>0.22</b>  |
| 208816  | 4/21/15 | FB | 13                       | 0.34        | 0.63        | 0.58      | 0.60                  | 0.26      |           | 0.25        | 0.21        | 0.42         | 0.18         | 0.34         |
| RED   | POLLED  |    | DLCC DODGE CITY 78Y      |             |             |           | DLCC KATARINA 67Z     |           |           |             |             |              |              |              |
| DLCC RANCH PIERZ MN   |         |    |                          |             |             |           |                       |           |           |             |             |              |              |              |
| <b>DLCC CROSSFIRE 67C</b>   |         |    | <b>1</b>                 | <b>8.3</b>  | <b>2.3</b>  | <b>76</b> | <b>111</b>            | <b>19</b> | <b>57</b> | <b>3.2</b>  | <b>0</b>    | <b>8.9</b>   | <b>-0.08</b> | <b>0.26</b>  |
| 208406  | 4/9/15  | FB | 18                       | 0.24        | 0.56        | 0.53      | 0.55                  | 0.32      |           | 0.26        | 0.21        | 0.40         | 0.16         | 0.32         |
| RED   | POLLED  |    | DLCC DODGE CITY 78Y      |             |             |           | DLCC CLAIRE 50W       |           |           |             |             |              |              |              |
| LANE GIESS PIERZ MN   |         |    |                          |             |             |           |                       |           |           |             |             |              |              |              |
| <b>DLCC DEBUT 88D</b>   |         |    | <b>2</b>                 | <b>11.9</b> | <b>-0.3</b> | <b>72</b> | <b>107</b>            | <b>7</b>  | <b>42</b> | <b>4.8</b>  | <b>0.2</b>  | <b>1.7</b>   | <b>-0.07</b> | <b>0.14</b>  |
| 210912  | 4/12/16 | FB | 7                        | 0.28        | 0.68        | 0.64      | 0.63                  | 0.27      |           | 0.26        | 0.29        | 0.44         | 0.19         | 0.40         |
| BLK   | POLLED  |    | DLCC DODGE CITY 78Y      |             |             |           | DLCC BINDI 71X        |           |           |             |             |              |              |              |
| DLCC RANCH PIERZ MN   |         |    |                          |             |             |           |                       |           |           |             |             |              |              |              |
| <b>DLCC DERBY 64D</b>   |         |    | <b>8</b>                 | <b>9.3</b>  | <b>1.4</b>  | <b>61</b> | <b>61</b>             | <b>16</b> | <b>46</b> | <b>3.2</b>  | <b>-0.1</b> | <b>-35.4</b> | <b>-0.09</b> | <b>0.18</b>  |
| 210507  | 4/2/16  | FB | 6                        | 0.35        | 0.70        | 0.61      | 0.61                  | 0.22      |           | 0.24        | 0.19        | 0.40         | 0.21         | 0.35         |
| RED   | POLLED  |    | DLCC DODGE CITY 78Y      |             |             |           | DLCC TOPAZ 20Y        |           |           |             |             |              |              |              |
| DLCC RANCH PIERZ MN   |         |    |                          |             |             |           |                       |           |           |             |             |              |              |              |
| <b>DLCC DODGE CITY 78Y</b>  |         |    | <b>11</b>                | <b>10.5</b> | <b>0.4</b>  | <b>68</b> | <b>97</b>             | <b>3</b>  | <b>37</b> | <b>4.1</b>  | <b>0</b>    | <b>-1.9</b>  | <b>-0.06</b> | <b>0.12</b>  |
| 200720  | 4/22/11 | PB | 60                       | 0.44        | 0.75        | 0.71      | 0.72                  | 0.45      |           | 0.39        | 0.37        | 0.58         | 0.28         | 0.45         |
| BLK   | POLLED  |    | SBCC WOMANIZER 9137      |             |             |           | DLCC PERFECT ENUF 28W |           |           |             |             |              |              |              |
| LANE GIESS PIERZ MN   |         |    |                          |             |             |           |                       |           |           |             |             |              |              |              |
| <b>DLCC DURANGO 26Z</b>   |         |    | <b>5</b>                 | <b>6.8</b>  | <b>2.7</b>  | <b>65</b> | <b>111</b>            | <b>23</b> | <b>55</b> | <b>0.4</b>  | <b>-0.1</b> | <b>-5.5</b>  | <b>-0.10</b> | <b>0.64</b>  |
| 202828  | 3/30/12 | PB | 6                        | 0.34        | 0.60        | 0.54      | 0.55                  | 0.29      |           | 0.25        | 0.31        | 0.43         | 0.27         | 0.38         |
| BLK   | POLLED  |    | DLCC SHUR LOC 99W        |             |             |           | DLCC MANDI 55U        |           |           |             |             |              |              |              |
| DLCC RANCH PIERZ MN   |         |    |                          |             |             |           |                       |           |           |             |             |              |              |              |
| WATINGA WILLALOOKA AUSTRALIA; DLCC RANCH PIERZ MN;                          |         |    |                          |             |             |           |                       |           |           |             |             |              |              |              |
| NICHOLS FARMS LTD BRIDGEWATER IA; LEACHMAN CATTLE OF COLORADO WELLINGTON CO |         |    |                          |             |             |           |                       |           |           |             |             |              |              |              |

## 2021 SIRE SUMMARY - MAIN LISTING

| Name                                 | Reg#    | DOB           | % | #Herds                   | CED         | BW          | WW        | YW  | Milk      | MWW       | CEM         | Marb        | CW           | Fat          | REA          |
|--------------------------------------|---------|---------------|---|--------------------------|-------------|-------------|-----------|---|-----------|-----------|-------------|-------------|--------------|--------------|--------------|
|                                      |         |               |   | #Dcalves                 | Acc         | Acc         | Acc       | Acc   | Acc       |           | Acc         | Acc         | Acc          | Acc          | Acc          |
|                                      | Color   | H/P/S         |   | Sire                     |             |             |           | Dam   |           |           |             |             |              |              |              |
|                                      | Breeder |               |   |                          |             |             | Owner(s)  |   |           |           |             |             |              |              |              |
| <b>DLCC ENERGIZER 87E</b>            |         |               |   | <b>1</b>                 | <b>3.0</b>  | <b>2.6</b>  | <b>62</b> | <b>83</b>   | <b>14</b> | <b>45</b> | <b>-1.5</b> | <b>-0.2</b> | <b>-20.0</b> | <b>-0.08</b> | <b>0.04</b>  |
| 213025                               | 4/9/17  | FB            |   |                          | 0.46        | 0.55        | 0.52      | 0.50  | 0.17      |           | 0.21        | 0.35        | 0.46         | 0.29         | 0.43         |
| RED                                  | POLLED  |               |   | DLCC MANHATTAN 33Z       |             |             |           | DLCC POPPY 108Z   |           |           |             |             |              |              |              |
| LEAH GIESS PIERZ MN                  |         |               |   |                          |             |             |           | KNN FARMS BAY CITY WI; DLCC RANCH PIERZ MN                                |           |           |             |             |              |              |              |
| <b>DLCC GOLD DUST 64G</b>            |         |               |   | <b>2</b>                 | <b>10.1</b> | <b>1.7</b>  | <b>83</b> | <b>124</b>  | <b>13</b> | <b>54</b> | <b>5.3</b>  | <b>0.2</b>  | <b>4.7</b>   | <b>-0.07</b> | <b>0.51</b>  |
| 216262                               | 3/29/19 | FB            |   |                          | 0.21        | 0.53        | 0.46      | 0.43  | 0.14      |           | 0.18        | 0.20        | 0.31         | 0.16         | 0.28         |
| BLK                                  | POLLED  |               |   | DLCC DEBUT 88D           |             |             |           | DLCC LOOP 19B   |           |           |             |             |              |              |              |
| DLCC RANCH PIERZ MN                  |         |               |   |                          |             |             |           | DLCC RANCH PIERZ MN   |           |           |             |             |              |              |              |
| <b>DLCC GOLD MEDAL 104G</b>          |         |               |   | <b>2</b>                 | <b>10.2</b> | <b>0.4</b>  | <b>67</b> | <b>103</b>  | <b>17</b> | <b>50</b> | <b>1.4</b>  | <b>0</b>    | <b>-1.4</b>  | <b>-0.07</b> | <b>-0.10</b> |
| 216296                               | 4/16/19 | 7/8 DS 1/8 AN |   |                          | 0.45        | 0.52        | 0.49      | 0.48  | 0.15      |           | 0.20        | 0.37        | 0.47         | 0.34         | 0.45         |
| BLK                                  | POLLED  |               |   | DLCC EVEREST 50E         |             |             |           | DLCC CLAIRE 12B   |           |           |             |             |              |              |              |
| LANE GIESS PIERZ MN                  |         |               |   |                          |             |             |           | R P FARMS SWANVILLE MN; DLCC RANCH PIERZ MN                               |           |           |             |             |              |              |              |
| <b>DLCC SHUR LOC 99W</b>             |         |               |   | <b>27</b>                | <b>5.8</b>  | <b>2.5</b>  | <b>54</b> | <b>82</b>   | <b>7</b>  | <b>34</b> | <b>-0.6</b> | <b>-0.2</b> | <b>-12.7</b> | <b>-0.11</b> | <b>0.43</b>  |
| 196653                               | 4/14/09 | 7/8 DS 1/8 HH |   | 179                      | 0.62        | 0.80        | 0.74      | 0.75  | 0.56      |           | 0.47        | 0.63        | 0.70         | 0.52         | 0.64         |
| BLK                                  | POLLED  |               |   | MJB SHUR LOC 106S        |             |             |           | VPK KEYSHA 047K   |           |           |             |             |              |              |              |
| DLCC RANCH PIERZ MN                  |         |               |   |                          |             |             |           | LEACHMAN CATTLE OF CO FT COLLINS CO; DLCC RANCH PIERZ MN                  |           |           |             |             |              |              |              |
| <b>DLCC STOCKMAN 39C</b>             |         |               |   | <b>4</b>                 | <b>11.4</b> | <b>0.3</b>  | <b>81</b> | <b>123</b>  | <b>5</b>  | <b>45</b> | <b>5.6</b>  | <b>-0.1</b> | <b>10.1</b>  | <b>-0.08</b> | <b>0.52</b>  |
| 207902                               | 3/27/15 | PB            |   | 10                       | 0.27        | 0.57        | 0.54      | 0.55  | 0.27      |           | 0.22        | 0.25        | 0.41         | 0.22         | 0.35         |
| BLK                                  | POLLED  |               |   | MMM UNTOUCHABLE W810     |             |             |           | DLCC PROMISE 40U  |           |           |             |             |              |              |              |
| LANE GIESS PIERZ MN                  |         |               |   |                          |             |             |           | JARED MUMM KIMBERLY ID; MISSOURI COTEAU CATTLE CO CRANE VALLEY SK CANADA; |           |           |             |             |              |              |              |
|                                      |         |               |   |                          |             |             |           | DLCC RANCH PIERZ MN; TERRY HOUSER LEONARDVILLE KS                         |           |           |             |             |              |              |              |
| <b>DLCC TWO STEP 84B</b>             |         |               |   | <b>13</b>                | <b>0.7</b>  | <b>4.7</b>  | <b>71</b> | <b>103</b>  | <b>12</b> | <b>47</b> | <b>-7.1</b> | <b>-0.6</b> | <b>-19.8</b> | <b>-0.12</b> | <b>0.71</b>  |
| 205508                               | 5/12/14 | PB            |   | 39                       | 0.29        | 0.61        | 0.58      | 0.58  | 0.34      |           | 0.23        | 0.28        | 0.45         | 0.23         | 0.40         |
| RED                                  | POLLED  |               |   | DLCC SHUR LOC 99W        |             |             |           | DLCC DANCER 141T  |           |           |             |             |              |              |              |
| LANE GIESS PIERZ MN                  |         |               |   |                          |             |             |           | DLCC RANCH PIERZ MN   |           |           |             |             |              |              |              |
| <b>DLCC WHIPLASH 1Y</b>              |         |               |   | <b>21</b>                | <b>7.6</b>  | <b>-0.2</b> | <b>55</b> | <b>83</b>   | <b>13</b> | <b>40</b> | <b>-4.3</b> | <b>-0.3</b> | <b>-22.3</b> | <b>-0.08</b> | <b>-0.24</b> |
| 199722                               | 1/1/11  | PB            |   | 107                      | 0.48        | 0.76        | 0.72      | 0.71  | 0.55      |           | 0.40        | 0.62        | 0.67         | 0.53         | 0.63         |
| BLK                                  | POLLED  |               |   | DLCC SURE THING TOO 119T |             |             |           | DLCC DANCER 141T  |           |           |             |             |              |              |              |
| LANE GIESS PIERZ MN                  |         |               |   |                          |             |             |           | DLCC WHIPLASH SYNDICATE PIERZ MN; DLCC RANCH PIERZ MN                     |           |           |             |             |              |              |              |
| <b>EBS ELKER 1121 642A</b>           |         |               |   | <b>1</b>                 | <b>8.1</b>  | <b>2.8</b>  | <b>58</b> | <b>78</b>   | <b>6</b>  | <b>35</b> | <b>2</b>    | <b>-0.3</b> | <b>-23.7</b> | <b>-0.10</b> | <b>0.30</b>  |
| 203524                               | 3/3/13  | FB            |   | 16                       | 0.21        | 0.53        | 0.46      | 0.50  | 0.26      |           | 0.18        | 0.22        | 0.40         | 0.18         | 0.35         |
| RED                                  | POLLED  |               |   | DLC LEGACY 1121          |             |             |           | EBS IDA 507T  |           |           |             |             |              |              |              |
| ELKINGTON BROS & SONS IDAHO FALLS ID |         |               |   |                          |             |             |           | ELKINGTON BROS & SONS IDAHO FALLS ID                                      |           |           |             |             |              |              |              |
| <b>EBS ELKER 523Z</b>                |         |               |   | <b>1</b>                 | <b>15.1</b> | <b>-3.6</b> | <b>39</b> | <b>61</b>   | <b>9</b>  | <b>28</b> | <b>4</b>    | <b>-0.1</b> | <b>-25.1</b> | <b>-0.08</b> | <b>0.09</b>  |
| 201500                               | 3/21/12 | FB            |   | 9                        | 0.32        | 0.59        | 0.54      | 0.56  | 0.27      |           | 0.23        | 0.21        | 0.40         | 0.13         | 0.32         |
| BLK                                  | POLLED  |               |   | CIMARRON TRIUMPH 705T    |             |             |           | EBS MARTHA 975W   |           |           |             |             |              |              |              |
| ELKINGTON BROS & SONS IDAHO FALLS ID |         |               |   |                          |             |             |           | ELKINGTON BROS & SONS IDAHO FALLS ID                                      |           |           |             |             |              |              |              |
| <b>GUM HILL RED 530</b>              |         |               |   | <b>9</b>                 | <b>9.3</b>  | <b>3.5</b>  | <b>56</b> | <b>73</b>   | <b>15</b> | <b>43</b> | <b>5.9</b>  | <b>-0.3</b> | <b>-11.7</b> | <b>-0.12</b> | <b>0.11</b>  |
| 208776                               | 3/17/09 | FB            |   | 59                       | 0.21        | 0.60        | 0.57      | 0.59  | 0.31      |           | 0.24        | 0.21        | 0.39         | 0.10         | 0.34         |
| RED                                  | POLLED  |               |   | GUM HILL B41             |             |             |           | GUM HILL Y046   |           |           |             |             |              |              |              |
| <b>JVM EASTON 750E</b>               |         |               |   | <b>12</b>                | <b>6.7</b>  | <b>2.1</b>  | <b>69</b> | <b>100</b>  | <b>16</b> | <b>50</b> | <b>-2.3</b> | <b>-0.4</b> | <b>-19.3</b> | <b>-0.09</b> | <b>0.48</b>  |
| 211759                               | 4/28/17 | FB            |   | 1                        | 0.5         | 0.59        | 0.53      | 0.48  | 0.11      |           | 0.20        | 0.41        | 0.45         | 0.33         | 0.43         |
| BLK                                  | POLLED  |               |   | HILL CREST 465B          |             |             |           | JVM ZELLA 203Z  |           |           |             |             |              |              |              |
| JVM CATTLE COMPANY PELLA IA          |         |               |   |                          |             |             |           | JVM CATTLE COMPANY PELLA IA   |           |           |             |             |              |              |              |
| <b>JVM FLYNN 853F</b>                |         |               |   | <b>2</b>                 | <b>12.1</b> | <b>0.6</b>  | <b>63</b> | <b>90</b>   | <b>24</b> | <b>55</b> | <b>5.7</b>  | <b>-0.3</b> | <b>12.3</b>  | <b>-0.09</b> | <b>0.73</b>  |
| 214382                               | 3/20/18 | PB            |   |                          | 0.47        | 0.60        | 0.57      | 0.56  | 0.15      |           | 0.21        | 0.36        | 0.47         | 0.32         | 0.43         |
| BLK                                  | POLLED  |               |   | MJB DILLON 689D          |             |             |           | TLC NAVY 2019B  |           |           |             |             |              |              |              |
| JVM CATTLE COMPANY PELLA IA          |         |               |   |                          |             |             |           | JVM CATTLE COMPANY PELLA IA   |           |           |             |             |              |              |              |
| <b>JVM ZEKE 252Z</b>                 |         |               |   | <b>9</b>                 | <b>8.2</b>  | <b>1.1</b>  | <b>52</b> | <b>73</b>   | <b>11</b> | <b>37</b> | <b>-0.8</b> | <b>-0.3</b> | <b>-16.0</b> | <b>-0.10</b> | <b>0.49</b>  |
| 202601                               | 5/4/12  | PB            |   | 23                       | 0.30        | 0.54        | 0.47      | 0.41  | 0.22      |           | 0.20        | 0.16        | 0.35         | 0.12         | 0.33         |
| RED                                  | POLLED  |               |   | HS E PLURBIS UNUM        |             |             |           | MAPLE LEAF IRIS 11N   |           |           |             |             |              |              |              |
| JVM CATTLE COMPANY PELLA IA          |         |               |   |                          |             |             |           | JVM CATTLE COMPANY PELLA IA   |           |           |             |             |              |              |              |
| <b>KNN RANGER 37T</b>                |         |               |   | <b>8</b>                 | <b>10.1</b> | <b>-2.0</b> | <b>39</b> | <b>54</b>   | <b>13</b> | <b>32</b> | <b>6.9</b>  | <b>-0.2</b> | <b>-16.8</b> | <b>-0.09</b> | <b>0.15</b>  |
| 193165                               | 5/17/07 | PB            |   | 106                      | 0.38        | 0.67        | 0.62      | 0.60  | 0.42      |           | 0.28        | 0.10        | 0.40         | 0.14         | 0.35         |
| BLK                                  | POLLED  |               |   | DLCC OPEN RANGE 3R       |             |             |           | KNN RUBEE DANCER 25R  |           |           |             |             |              |              |              |
| KNN FARMS BAY CITY WI                |         |               |   |                          |             |             |           | KNN FARMS BAY CITY WI   |           |           |             |             |              |              |              |
| <b>MJB BLACK JACK 424B</b>           |         |               |   | <b>1</b>                 | <b>6.6</b>  | <b>2.3</b>  | <b>69</b> | <b>108</b>  | <b>20</b> | <b>54</b> | <b>1.9</b>  | <b>0</b>    | <b>-1.9</b>  | <b>-0.10</b> | <b>0.76</b>  |
| 205606                               | 2/19/14 | PB            |   | 9                        | 0.50        | 0.67        | 0.61      | 0.59  | 0.33      |           | 0.33        | 0.45        | 0.53         | 0.42         | 0.49         |
| BLK                                  | SCURRED |               |   | MMM UNTOUCHABLE W810     |             |             |           | MJB NIKKI 3657N   |           |           |             |             |              |              |              |
| MJB RANCH LODGE GRASS MT             |         |               |   |                          |             |             |           | NICHOLS FARMS LTD BRIDGEWATER IA; MJB RANCH LODGE GRASS MT                |           |           |             |             |              |              |              |

# 2021 SIRE SUMMARY - MAIN LISTING

| Name                               | Reg#     | DOB | % | #Herds                | CED         | BW          | WW   | YW                      | Milk      | MWW       | CEM        | Marb        | CW           | Fat          | REA         |
|------------------------------------|----------|-----|---|-----------------------|-------------|-------------|--|-------------------------|-----------|-----------|------------|-------------|--------------|--------------|-------------|
|                                    |          |     |   | #Dcalves              | Acc         | Acc         | Acc  | Acc                     | Acc       |           | Acc        | Acc         | Acc          | Acc          | Acc         |
|                                    |          |     |   | Sire                  |             |             |  | Dam                     |           |           |            |             |              |              |             |
|                                    |          |     |   |                       |             |             | Owner(s)   |                         |           |           |            |             |              |              |             |
| <b>MJB BLACKFOOT 546C</b>          |          |     |   | <b>3</b>              | <b>13.0</b> | <b>-0.8</b> | <b>66</b>  | <b>104</b>              | <b>19</b> | <b>51</b> | <b>9.3</b> | <b>0</b>    | <b>8.8</b>   | <b>-0.08</b> | <b>0.41</b> |
| 208539                             | 3/3/15   | PB  |   | 23                    | 0.56        | 0.67        | 0.63   | 0.63                    | 0.34      |           | 0.33       | 0.35        | 0.53         | 0.34         | 0.49        |
| BLK                                | POLLED   |     |   | MMM UNTOUCHABLE W810  |             |             |  | MJB JULIET 0536X        |           |           |            |             |              |              |             |
| MJB RANCH LODGE GRASS MT           |          |     |   |                       |             |             | DAHL LAND & CATTLE CO GACKLE ND  |                         |           |           |            |             |              |              |             |
| <b>MJB COOL 548C</b>               |          |     |   | <b>2</b>              | <b>8.3</b>  | <b>0</b>    | <b>62</b>  | <b>91</b>               | <b>19</b> | <b>50</b> | <b>0.9</b> | <b>-0.2</b> | <b>-8.3</b>  | <b>-0.10</b> | <b>0.52</b> |
| 208541                             | 3/4/15   | FB  |   |                       | 0.34        | 0.60        | 0.55   | 0.54                    | 0.27      |           | 0.24       | 0.18        | 0.37         | 0.20         | 0.32        |
| BLK                                | POLLED   |     |   | MJB SWAGGER 330Z      |             |             |  | MJB NIKKI 8613U         |           |           |            |             |              |              |             |
| MJB RANCH LODGE GRASS MT           |          |     |   |                       |             |             | MISSOURI COTEAU CATTLE CO CRANE VALLEY SK CANADA                         |                         |           |           |            |             |              |              |             |
| <b>MJB COUNTRY COOL 535C</b>       |          |     |   | <b>1</b>              | <b>2.6</b>  | <b>3.6</b>  | <b>57</b>  | <b>90</b>               | <b>6</b>  | <b>35</b> | <b>2.1</b> | <b>-0.5</b> | <b>-13.0</b> | <b>-0.15</b> | <b>0.94</b> |
| 208533                             | 2/25/15  | PB  |   | 4                     | 0.54        | 0.72        | 0.68   | 0.60                    | 0.35      |           | 0.33       | 0.67        | 0.69         | 0.61         | 0.67        |
| BLK                                | POLLED   |     |   | CIMARRON REBEL 941W   |             |             |  | MJB NIKKI 3657N         |           |           |            |             |              |              |             |
| MJB RANCH LODGE GRASS MT           |          |     |   |                       |             |             | MJB RANCH LODGE GRASS MT   |                         |           |           |            |             |              |              |             |
| <b>MJB DILLON 689D</b>             |          |     |   | <b>8</b>              | <b>8.9</b>  | <b>2.4</b>  | <b>73</b>  | <b>115</b>              | <b>21</b> | <b>58</b> | <b>5.1</b> | <b>-0.2</b> | <b>13.8</b>  | <b>-0.10</b> | <b>0.76</b> |
| 209901                             | 3/7/16   | FB  |   | 5                     | 0.51        | 0.62        | 0.58   | 0.55                    | 0.25      |           | 0.28       | 0.39        | 0.48         | 0.34         | 0.46        |
| BLK                                | POLLED   |     |   | MJB SWAGGER 330Z      |             |             |  | MJB YURI 1666Y          |           |           |            |             |              |              |             |
| MJB RANCH LODGE GRASS MT           |          |     |   |                       |             |             | MJB RANCH LODGE GRASS MT; JVM CATTLE COMPANY PELLA IA; WALNUT GROVE FARM |                         |           |           |            |             |              |              |             |
| VALLEY FALLS KS;                   |          |     |   |                       |             |             |  |                         |           |           |            |             |              |              |             |
| <b>MJB EXTRA 771E</b>              |          |     |   | <b>2</b>              | <b>4.6</b>  | <b>1.1</b>  | <b>63</b>  | <b>104</b>              | <b>15</b> | <b>46</b> | <b>1.0</b> | <b>-0.4</b> | <b>4.0</b>   | <b>-0.12</b> | <b>0.76</b> |
| 212167                             | 3/10/17  | FB  |   | 6                     | 0.33        | 0.66        | 0.60   | 0.56                    | 0.31      |           | 0.27       | 0.33        | 0.41         | 0.33         | 0.38        |
| BLK                                | POLLED   |     |   | MJB COUNTRY COOL 535C |             |             |  | MJB NIKKI 8613U         |           |           |            |             |              |              |             |
| MJB RANCH LODGE GRASS MT           |          |     |   |                       |             |             | MJB RANCH LODGE GRASS MT   |                         |           |           |            |             |              |              |             |
| <b>MJB PROGRESS 892F</b>           |          |     |   | <b>1</b>              | <b>7.7</b>  | <b>1.1</b>  | <b>83</b>  | <b>136</b>              | <b>21</b> | <b>63</b> | <b>3.4</b> | <b>-0.1</b> | <b>13.4</b>  | <b>-0.08</b> | <b>0.31</b> |
| 213833                             | 3/22/18  | PB  |   |                       | 0.46        | 0.55        | 0.51   | 0.51                    | 0.24      |           | 0.26       | 0.41        | 0.48         | 0.39         | 0.45        |
| BLK                                | POLLED   |     |   | BC PROGRESS 315U      |             |             |  | MJB PERFECT 0582X       |           |           |            |             |              |              |             |
| MJB RANCH LODGE GRASS MT           |          |     |   |                       |             |             | MJB RANCH LODGE GRASS MT   |                         |           |           |            |             |              |              |             |
| <b>MJB SHUR LOC 106S</b>           |          |     |   | <b>13</b>             | <b>7.4</b>  | <b>1.6</b>  | <b>54</b>  | <b>81</b>               | <b>14</b> | <b>41</b> | <b>2.4</b> | <b>-0.2</b> | <b>-29.1</b> | <b>-0.11</b> | <b>0.47</b> |
| 188977                             | 1/24/06  | FB  |   | 129                   | 0.44        | 0.74        | 0.69   | 0.70                    | 0.52      |           | 0.41       | 0.38        | 0.51         | 0.30         | 0.47        |
| RED                                | POLLED   |     |   | DLCC SURE-ENUF        |             |             |  | MJB PROMISE 4550P       |           |           |            |             |              |              |             |
| MJB RANCH LODGE GRASS MT           |          |     |   |                       |             |             | MJB RANCH LODGE GRASS MT; DLCC RANCH PIERZ MN                            |                         |           |           |            |             |              |              |             |
| <b>MJB SWAGGER 330Z</b>            |          |     |   | <b>4</b>              | <b>10.2</b> | <b>0.1</b>  | <b>61</b>  | <b>94</b>               | <b>14</b> | <b>45</b> | <b>3.7</b> | <b>-0.3</b> | <b>-1.2</b>  | <b>-0.11</b> | <b>0.71</b> |
| 201818                             | 3/4/12   | PB  |   | 67                    | 0.42        | 0.78        | 0.74   | 0.72                    | 0.47      |           | 0.40       | 0.26        | 0.49         | 0.25         | 0.43        |
| BLK                                | POLLED   |     |   | MMM UNTOUCHABLE W810  |             |             |  | MJB NIKKI 3657N         |           |           |            |             |              |              |             |
| MJB RANCH LODGE GRASS MT           |          |     |   |                       |             |             | MJB RANCH LODGE GRASS MT   |                         |           |           |            |             |              |              |             |
| <b>MMM UNTOUCHABLE W810</b>        |          |     |   | <b>22</b>             | <b>12.8</b> | <b>0.2</b>  | <b>74</b>  | <b>107</b>              | <b>16</b> | <b>53</b> | <b>8.3</b> | <b>-0.1</b> | <b>7.1</b>   | <b>-0.09</b> | <b>0.49</b> |
| 199405                             | 8/27/09  | PB  |   | 309                   | 0.60        | 0.82        | 0.78   | 0.78                    | 0.62      |           | 0.54       | 0.42        | 0.59         | 0.41         | 0.56        |
| BLK                                | POLLED   |     |   | DLCC ASTOUND 48S      |             |             |  | BRANDY CREEK 68J        |           |           |            |             |              |              |             |
| TRIPLE M INCORPORATED CLINTON NC   |          |     |   |                       |             |             | MJB RANCH LODGE GRASS MT; TRIPLE M INCORPORATED CLINTON NC               |                         |           |           |            |             |              |              |             |
| <b>NFL BLACK JACK DSD051</b>       |          |     |   | <b>1</b>              | <b>10.1</b> | <b>1.6</b>  | <b>69</b>  | <b>107</b>              | <b>24</b> | <b>58</b> | <b>4.0</b> | <b>0</b>    | <b>1.5</b>   | <b>-0.11</b> | <b>0.71</b> |
| 210781                             | 3/30/16  | FB  |   |                       | 0.55        | 0.72        | 0.67   | 0.63                    | 0.19      |           | 0.29       | 0.57        | 0.63         | 0.49         | 0.57        |
| BLK                                | POLLED   |     |   | MJB BLACK JACK 424B   |             |             |  | NFL CHELSEA DSB013      |           |           |            |             |              |              |             |
| NICHOLS FARMS LTD BRIDGEWATER IA   |          |     |   |                       |             |             | NICHOLS FARMS LTD BRIDGEWATER IA   |                         |           |           |            |             |              |              |             |
| <b>NFL MAJESTIC DSE084</b>         |          |     |   | <b>1</b>              | <b>8.4</b>  | <b>2.8</b>  | <b>83</b>  | <b>117</b>              | <b>12</b> | <b>54</b> | <b>2.8</b> | <b>-0.2</b> | <b>-1.6</b>  | <b>-0.09</b> | <b>0.54</b> |
| 212995                             | 4/10/17  | FB  |   |                       | 0.38        | 0.50        | 0.46   | 0.47                    | 0.15      |           | 0.20       | 0.16        | 0.42         | 0.13         | 0.38        |
| BLK                                | POLLED   |     |   | NICHOLS MAJESTIC Y808 |             |             |  | NICHOLS PERFECTION Z915 |           |           |            |             |              |              |             |
| NICHOLS FARMS LTD BRIDGEWATER IA   |          |     |   |                       |             |             | NICHOLS FARMS LTD BRIDGEWATER IA   |                         |           |           |            |             |              |              |             |
| <b>NFL PROGRESS DSB014</b>         |          |     |   | <b>3</b>              | <b>6.2</b>  | <b>2.4</b>  | <b>87</b>  | <b>137</b>              | <b>9</b>  | <b>52</b> | <b>6.5</b> | <b>-0.3</b> | <b>28.5</b>  | <b>-0.08</b> | <b>0.61</b> |
| 206246                             | 3/28/14  | PB  |   | 19                    | 0.62        | 0.79        | 0.75   | 0.72                    | 0.31      |           | 0.35       | 0.61        | 0.65         | 0.49         | 0.59        |
| BLK                                | POLLED   |     |   | BC PROGRESS 315U      |             |             |  | NICHOLS BEVERLY         |           |           |            |             |              |              |             |
| NICHOLS FARMS LTD BRIDGEWATER IA   |          |     |   |                       |             |             | NICHOLS FARMS LTD BRIDGEWATER IA   |                         |           |           |            |             |              |              |             |
| <b>NFL UNTOUCHABLE DSC042</b>      |          |     |   | <b>1</b>              | <b>10.3</b> | <b>1.4</b>  | <b>81</b>  | <b>129</b>              | <b>12</b> | <b>53</b> | <b>6.9</b> | <b>0.1</b>  | <b>18.0</b>  | <b>-0.08</b> | <b>0.40</b> |
| 208337                             | 3/21/15  | FB  |   | 7                     | 0.33        | 0.58        | 0.51   | 0.51                    | 0.23      |           | 0.26       | 0.26        | 0.39         | 0.23         | 0.35        |
| BLK                                | POLLED   |     |   | MMM UNTOUCHABLE W810  |             |             |  | NICHOLS PERFECTION Z909 |           |           |            |             |              |              |             |
| NICHOLS FARMS LTD BRIDGEWATER IA   |          |     |   |                       |             |             | NICHOLS FARMS LTD BRIDGEWATER IA   |                         |           |           |            |             |              |              |             |
| <b>NICHOLS DS A406</b>             |          |     |   | <b>1</b>              | <b>7.9</b>  | <b>3.0</b>  | <b>72</b>  | <b>101</b>              | <b>33</b> | <b>69</b> | <b>4.3</b> | <b>-0.1</b> | <b>-11.2</b> | <b>-0.1</b>  | <b>0.19</b> |
| 205909                             | 11/12/13 | FB  |   | 7                     | 0.41        | 0.62        | 0.57   | 0.57                    | 0.23      |           | 0.24       | 0.19        | 0.45         | 0.12         | 0.42        |
| BLK                                | POLLED   |     |   | NICHOLS T807          |             |             |  | MMM PERFECTION X923     |           |           |            |             |              |              |             |
| TRIPLE M INCORPORATED CLINTON NC   |          |     |   |                       |             |             | NICHOLS FARMS LTD BRIDGEWATER IA   |                         |           |           |            |             |              |              |             |
| <b>PRAIRIE FIELDMASTER</b>         |          |     |   | <b>8</b>              | <b>17.9</b> | <b>-1.1</b> | <b>28</b>  | <b>43</b>               | <b>13</b> | <b>27</b> | <b>4.1</b> | <b>-0.3</b> | <b>-33.9</b> | <b>-0.11</b> | <b>0.16</b> |
| 130706                             | 2/14/96  | PB  |   | 113                   | 0.54        | 0.77        | 0.69   | 0.68                    | 0.49      |           | 0.41       | 0.23        | 0.43         | 0.16         | 0.39        |
| BLK                                | POLLED   |     |   | CIMARRON ULTIMATE 375 |             |             |  | JAJ 420D                |           |           |            |             |              |              |             |
| KS DUSTY PRAIRIE CATTLE CO HAYS KS |          |     |   |                       |             |             | MJB RANCH LODGE GRASS MT; FOUR J RANCH AUSTIN TX                         |                         |           |           |            |             |              |              |             |

## 2021 SIRE SUMMARY - MAIN LISTING

| Name  | Reg#    | DOB   | % | #Herds                 | CED         | BW          | WW  | YW         | Milk       | MWW                 | CEM        | Marb        | CW           | Fat          | REA         |
|---|---------|-------|---|------------------------|-------------|-------------|---|------------|------------|---------------------|------------|-------------|--------------|--------------|-------------|
|   | Color   | H/P/S |   | #Dcalves               | Acc         | Acc         | Acc   | Acc        | Acc        |                     | Acc        | Acc         | Acc          | Acc          | Acc         |
|   | Breeder |       |   | Sire                   |             |             | Owner(s)  | Dam        |            |                     |            |             |              |              |             |
| <b>SCC MELBOURNE 1D</b>                       |         |       |   | <b>2</b>               | <b>6.4</b>  | <b>5.0</b>  | <b>72</b>   | <b>101</b> | <b>13</b>  | <b>49</b>           | <b>4.2</b> | <b>-0.3</b> | <b>-9.7</b>  | <b>-0.12</b> | <b>0.31</b> |
| 209763  | 3/14/16 | FB    |   | 6                      | 0.21        | 0.53        | 0.46  | 0.45       | 0.17       |                     | 0.16       | 0.17        | 0.35         | 0.13         | 0.30        |
| RED   | POLLED  |       |   | GUM HILL RED 530       |             |             |   |            |            | SCC MISS DIXIE 4A   |            |             |              |              |             |
| SADLER CATTLE COMPANY ANOKA MN                |         |       |   |                        |             |             | R P FARMS SWANVILLE MN; SADLER CATTLE COMPANY ANOKA MN; DLCC RANCH PIERZ MN |            |            |                     |            |             |              |              |             |
| <b>TC BUCKAROO 412B</b>                       |         |       |   | <b>1</b>               | <b>11.5</b> | <b>1.5</b>  | <b>70</b>   | <b>106</b> | <b>-15</b> | <b>20</b>           | <b>5.1</b> | <b>-0.8</b> | <b>-19.9</b> | <b>-0.13</b> | <b>0.9</b>  |
| 206540  | 2/3/14  | FB    |   | 45                     | 0.44        | 0.65        | 0.59  | 0.59       | 0.32       |                     | 0.26       | 0.46        | 0.54         | 0.34         | 0.49        |
| RED   | POLLED  |       |   | CIMARRON BONANZA 174L  |             |             |   |            |            | TC WENDY            |            |             |              |              |             |
| TRIPLE CROWN SOUTH DEVON FARM RUSSELLVILLE MO |         |       |   |                        |             |             | TRIPLE CROWN SOUTH DEVON FARM RUSSELLVILLE MO                               |            |            |                     |            |             |              |              |             |
| <b>TC CASSANOVA 517C</b>                      |         |       |   | <b>1</b>               | <b>16.2</b> | <b>-4.4</b> | <b>49</b>   | <b>68</b>  | <b>21</b>  | <b>45</b>           | <b>5.1</b> | <b>-0.2</b> | <b>-22.2</b> | <b>-0.06</b> | <b>0.37</b> |
| 208380  | 2/13/15 | FB    |   | 8                      | 0.41        | 0.65        | 0.56  | 0.54       | 0.26       |                     | 0.26       | 0.39        | 0.50         | 0.31         | 0.45        |
| RED   | POLLED  |       |   | CIMARRON FOREMOST 320A |             |             |   |            |            | TC UDDERLY PERFECT  |            |             |              |              |             |
| TRIPLE CROWN SOUTH DEVON FARM RUSSELLVILLE MO |         |       |   |                        |             |             | TRIPLE CROWN SOUTH DEVON FARM RUSSELLVILLE MO                               |            |            |                     |            |             |              |              |             |
| <b>TC DESIGN 671D</b>                         |         |       |   | <b>1</b>               | <b>14.7</b> | <b>1.2</b>  | <b>68</b>   | <b>104</b> | <b>8</b>   | <b>42</b>           | <b>5.7</b> | <b>-0.6</b> | <b>-5.4</b>  | <b>-0.12</b> | <b>0.76</b> |
| 210646  | 4/5/16  | FB    |   |                        | 0.42        | 0.50        | 0.45  | 0.44       | 0.16       |                     | 0.19       | 0.40        | 0.45         | 0.34         | 0.42        |
| RED   | POLLED  |       |   | TC BUCKAROO 412B       |             |             |   |            |            | TC ANN              |            |             |              |              |             |
| TRIPLE CROWN SOUTH DEVON FARM RUSSELLVILLE MO |         |       |   |                        |             |             | RANDY SEIDEL LOHMAN MO  |            |            |                     |            |             |              |              |             |
| <b>TC DOMINO 662D</b>                         |         |       |   | <b>1</b>               | <b>14.2</b> | <b>-1.2</b> | <b>59</b>   | <b>81</b>  | <b>18</b>  | <b>47</b>           | <b>4.2</b> | <b>-0.2</b> | <b>-24.0</b> | <b>-0.08</b> | <b>0.28</b> |
| 210638  | 3/16/16 | FB    |   |                        | 0.43        | 0.54        | 0.46  | 0.45       | 0.17       |                     | 0.20       | 0.37        | 0.46         | 0.31         | 0.40        |
| RED   | POLLED  |       |   | CIMARRON FOREMOST 320A |             |             |   |            |            | TC ZONE             |            |             |              |              |             |
| TRIPLE CROWN SOUTH DEVON FARM RUSSELLVILLE MO |         |       |   |                        |             |             | HF SEIDEL LOHMAN MO   |            |            |                     |            |             |              |              |             |
| <b>TC FABIO 823F</b>                          |         |       |   | <b>1</b>               | <b>6.5</b>  | <b>4.6</b>  | <b>77</b>   | <b>118</b> | <b>1</b>   | <b>39</b>           | <b>1.8</b> | <b>-0.5</b> | <b>-10.5</b> | <b>-0.11</b> | <b>0.8</b>  |
| 214139  | 2/6/18  | FB    |   |                        | 0.22        | 0.56        | 0.49  | 0.46       | 0.17       |                     | 0.16       | 0.24        | 0.38         | 0.20         | 0.31        |
| RED   | POLLED  |       |   | TC BUCKAROO 412B       |             |             |   |            |            | TC UPPER CRUST      |            |             |              |              |             |
| TRIPLE CROWN SOUTH DEVON FARM RUSSELLVILLE MO |         |       |   |                        |             |             | TRIPLE CROWN SOUTH DEVON FARM RUSSELLVILLE MO                               |            |            |                     |            |             |              |              |             |
| <b>TLC GENERAL PATTON</b>                     |         |       |   | <b>4</b>               | <b>10.7</b> | <b>-0.5</b> | <b>56</b>   | <b>81</b>  | <b>16</b>  | <b>44</b>           | <b>1.7</b> | <b>0</b>    | <b>-11.1</b> | <b>-0.06</b> | <b>0.01</b> |
| 209702  | 5/5/15  | FB    |   |                        | 0.42        | 0.48        | 0.46  | 0.45       | 0.17       |                     | 0.21       | 0.34        | 0.45         | 0.34         | 0.44        |
| BLK   | POLLED  |       |   | DLCC ADMIRAL 12A       |             |             |   |            |            | TLC DAISY DUKE 3802 |            |             |              |              |             |
| THOMPSON LAND & CATTLE CO. MOTLEY MN          |         |       |   |                        |             |             | THOMPSON LAND & CATTLE CO. MOTLEY MN  |            |            |                     |            |             |              |              |             |
| <b>TLC NEWT 945W</b>                          |         |       |   | <b>2</b>               | <b>9.0</b>  | <b>1.0</b>  | <b>59</b>   | <b>87</b>  | <b>23</b>  | <b>53</b>           | <b>2.1</b> | <b>-0.1</b> | <b>-2.2</b>  | <b>-0.09</b> | <b>0.22</b> |
| 201772  | 5/17/09 | PB    |   | 37                     | 0.24        | 0.55        | 0.49  | 0.48       | 0.33       |                     | 0.20       | 0.09        | 0.34         | 0.17         | 0.29        |
| BLK   | POLLED  |       |   | TLC AUGUSTUS 22        |             |             |   |            |            | TLC TANDI 645S      |            |             |              |              |             |
| THOMPSON LAND & CATTLE CO. MOTLEY MN          |         |       |   |                        |             |             | THOMPSON LAND & CATTLE CO. MOTLEY MN  |            |            |                     |            |             |              |              |             |
| <b>X-E DEPUTY D908</b>                        |         |       |   | <b>5</b>               | <b>9.6</b>  | <b>1.7</b>  | <b>65</b>   | <b>92</b>  | <b>16</b>  | <b>48</b>           | <b>2.7</b> | <b>-0.3</b> | <b>-15.7</b> | <b>-0.1</b>  | <b>0.37</b> |
| 211556  | 2/7/16  | FB    |   | 8                      | 0.20        | 0.61        | 0.57  | 0.57       | 0.17       |                     | 0.18       | 0.18        | 0.35         | 0.11         | 0.30        |
| RED   | POLLED  |       |   | GUM HILL RED 530       |             |             |   |            |            | X-E MISS LEO W908   |            |             |              |              |             |
| X-E STOCK RANCH MOSES LAKE WA                 |         |       |   |                        |             |             | DLCC RANCH PIERZ MN   |            |            |                     |            |             |              |              |             |

## 2021 SIRE SUMMARY - GENETIC INDICATOR LISTING

| Name                                     | Reg#    | DOB   | % | #Herds             | CED         | BW          | WW                                       | YW        | Milk      | MWW                 | CEM        | Marb        | CW           | Fat          | REA         |
|--|---------|-------|---|--------------------|-------------|-------------|--|-----------|-----------|---------------------|------------|-------------|--------------|--------------|-------------|
|  | Color   | H/P/S |   | #Dcalves           | Acc         | Acc         | Acc                                      | Acc       | Acc       |                     | Acc        | Acc         | Acc          | Acc          | Acc         |
|  | Breeder |       |   | Sire               |             |             | Owner(s)                                 | Dam       |           |                     |            |             |              |              |             |
| <b>BC DUKE 71D</b>                       |         |       |   | <b>2</b>           | <b>14.6</b> | <b>-0.4</b> | <b>59</b>                                | <b>89</b> | <b>22</b> | <b>52</b>           | <b>7.1</b> | <b>-0.2</b> | <b>-12.3</b> | <b>-0.09</b> | <b>0.29</b> |
| 211779                                   | 8/30/16 | FB    |   | 1                  | 0.23        | 0.41        | 0.38                                     | 0.36      | 0.22      |                     | 0.19       | 0.16        | 0.29         | 0.16         | 0.26        |
| RED                                      | POLLED  |       |   | DLC ROYAL LAD 1139 |             |             |  |           |           | BC SHERIDAN 6866S   |            |             |              |              |             |
| BIG COUNTRY BEEF GENETICS LODGE GRASS MT |         |       |   |                    |             |             | BIG COUNTRY BEEF GENETICS LODGE GRASS MT |           |           |                     |            |             |              |              |             |
| <b>DLC BLACK FOOT 307</b>                |         |       |   | <b>1</b>           | <b>15.2</b> | <b>-2.2</b> | <b>57</b>                                | <b>89</b> | <b>23</b> | <b>51</b>           | <b>9.2</b> | <b>-0.1</b> | <b>-0.5</b>  | <b>-0.09</b> | <b>0.33</b> |
| 212824                                   | 4/19/17 | FB    |   |                    | 0.23        | 0.39        | 0.35                                     | 0.38      | 0.16      |                     | 0.17       | 0.17        | 0.30         | 0.17         | 0.26        |
| BLK                                      | POLLED  |       |   | MJB BLACKFOOT 546C |             |             |  |           |           | DLC MISS ROMEO 403  |            |             |              |              |             |
| DAHL LAND & CATTLE CO GACKLE ND          |         |       |   |                    |             |             | DAHL LAND & CATTLE CO GACKLE ND          |           |           |                     |            |             |              |              |             |
| <b>DLC MR ROMEO 168</b>                  |         |       |   | <b>1</b>           | <b>5.9</b>  | <b>0.1</b>  | <b>57</b>                                | <b>90</b> | <b>22</b> | <b>50</b>           | <b>0.3</b> | <b>-0.2</b> | <b>-7.2</b>  | <b>-0.10</b> | <b>0.31</b> |
| 210097                                   | 4/11/16 | FB    |   |                    | 0.19        | 0.44        | 0.40                                     | 0.41      | 0.19      |                     | 0.15       | 0.18        | 0.30         | 0.16         | 0.27        |
| RED                                      | POLLED  |       |   | MJB ROMEO 337Z     |             |             |  |           |           | DLC HUDSON LASS 216 |            |             |              |              |             |
| DAHL LAND & CATTLE CO GACKLE ND          |         |       |   |                    |             |             | DIAMOND PLUS CATTLE GACKLE ND            |           |           |                     |            |             |              |              |             |

# 2021 SIRE SUMMARY - GENETIC INDICATOR LISTING

| Name  | DOB     | %       | #Herds                 | CED         | BW          | WW  | YW                       | Milk      | MWW       | CEM         | Marb        | CW           | Fat          | REA         |
|---|---------|---------|------------------------|-------------|-------------|---|--------------------------|-----------|-----------|-------------|-------------|--------------|--------------|-------------|
| Reg#  | Color   | Breeder | #Dcalves               | Acc         | Acc         | Acc   | Acc                      | Acc       | Acc       | Acc         | Acc         | Acc          | Acc          | Acc         |
|   | H/P/S   |         | Sire                   |             |             | Owner(s)  | Dam                      |           |           |             |             |              |              |             |
| <b>DLCC SHILO LAD 105</b>                     |         |         | <b>1</b>               | <b>7.3</b>  | <b>1.7</b>  | <b>58</b>   | <b>86</b>                | <b>17</b> | <b>46</b> | <b>0.2</b>  | <b>-0.2</b> | <b>-11.6</b> | <b>-0.09</b> | <b>0.27</b> |
| 212784  | 4/9/17  | FB      | 1                      | 0.18        | 0.43        | 0.38  | 0.38                     | 0.19      |           | 0.17        | 0.17        | 0.29         | 0.14         | 0.25        |
| BLK   | SCURRED |         | DLCC SHILO LAD 1100    |             |             |   | DLCC MS BLK HUDSON 075   |           |           |             |             |              |              |             |
| DAHL LAND & CATTLE CO GACKLE ND               |         |         |                        |             |             | DAHL LAND & CATTLE CO GACKLE ND   |                          |           |           |             |             |              |              |             |
| <b>DLCC FATE 56F</b>                          |         |         | <b>2</b>               | <b>9.3</b>  | <b>-0.5</b> | <b>69</b>   | <b>103</b>               | <b>11</b> | <b>46</b> | <b>1.4</b>  | <b>0.1</b>  | <b>-0.6</b>  | <b>-0.06</b> | <b>0.08</b> |
| 214816  | 3/25/18 | PB      |                        | 0.28        | 0.48        | 0.42  | 0.42                     | 0.23      |           | 0.21        | 0.26        | 0.36         | 0.23         | 0.32        |
| RED   | POLLED  |         | DLCC DODGE CITY 78Y    |             |             |   | DLCC FANCY PANTS 103Y    |           |           |             |             |              |              |             |
| DLCC RANCH PIERZ MN                           |         |         |                        |             |             | DLCC RANCH PIERZ MN; SCOTCHLANDS FARM ARMSTRONG BC; NINE MILE RANCH WALLA |                          |           |           |             |             |              |              |             |
| WALLA WA;                                     |         |         |                        |             |             |   |                          |           |           |             |             |              |              |             |
| <b>DLCC GRANDEUR 42G</b>                      |         |         | <b>2</b>               | <b>11.3</b> | <b>-1.6</b> | <b>65</b>   | <b>99</b>                | <b>18</b> | <b>50</b> | <b>3.2</b>  | <b>-0.1</b> | <b>-4.1</b>  | <b>-0.08</b> | <b>0.19</b> |
| 216237  | 3/25/19 | FB      |                        | 0.18        | 0.43        | 0.37  | 0.36                     | 0.16      |           | 0.15        | 0.16        | 0.29         | 0.16         | 0.25        |
| RED   | POLLED  |         | DLCC COWBOY JO 81C     |             |             |   | DLCC PERFECT 9A          |           |           |             |             |              |              |             |
| DLCC RANCH PIERZ MN                           |         |         |                        |             |             | CARROLL & CAROLE NELSON BIG TIMBER MT; DLCC RANCH PIERZ MN                |                          |           |           |             |             |              |              |             |
| <b>DLCC STOCKMAN 13E</b>                      |         |         | <b>1</b>               | <b>10.0</b> | <b>0</b>    | <b>72</b>   | <b>104</b>               | <b>12</b> | <b>48</b> | <b>2.9</b>  | <b>-0.1</b> | <b>-10.0</b> | <b>-0.08</b> | <b>0.50</b> |
| 213079  | 3/6/17  | FB      |                        | 0.19        | 0.41        | 0.37  | 0.39                     | 0.20      |           | 0.17        | 0.23        | 0.33         | 0.20         | 0.30        |
| BLK   | POLLED  |         | DLCC STOCKMAN 39C      |             |             |   | DLCC TEA CUP 113U        |           |           |             |             |              |              |             |
| DLCC RANCH PIERZ MN                           |         |         |                        |             |             | DLCC RANCH PIERZ MN; MISSOURI COTEAU CATTLE CO CRANE VALLEY SK CANADA     |                          |           |           |             |             |              |              |             |
| <b>DPC DALLAS PROGRESS D302</b>               |         |         | <b>1</b>               | <b>4.3</b>  | <b>3.9</b>  | <b>74</b>   | <b>121</b>               | <b>14</b> | <b>51</b> | <b>0.7</b>  | <b>-0.3</b> | <b>-0.5</b>  | <b>-0.11</b> | <b>0.52</b> |
| 212318  | 2/28/16 | FB      |                        | 0.21        | 0.39        | 0.37  | 0.37                     | 0.21      |           | 0.18        | 0.24        | 0.30         | 0.22         | 0.28        |
| RED   | POLLED  |         | BC PROGRESS 315U       |             |             |   | COTEAU DALLAS SKY A812   |           |           |             |             |              |              |             |
| DIAMOND PLUS CATTLE GACKLE ND                 |         |         |                        |             |             | DIAMOND PLUS CATTLE GACKLE ND   |                          |           |           |             |             |              |              |             |
| <b>DPC DALLAS SKYLINE D812</b>                |         |         | <b>1</b>               | <b>5.4</b>  | <b>3.6</b>  | <b>59</b>   | <b>85</b>                | <b>9</b>  | <b>39</b> | <b>-2.3</b> | <b>-0.5</b> | <b>-10.6</b> | <b>-0.11</b> | <b>0.54</b> |
| 212279  | 2/26/16 | FB      |                        | 0.18        | 0.39        | 0.38  | 0.38                     | 0.19      |           | 0.16        | 0.10        | 0.26         | 0.08         | 0.23        |
| RED   | POLLED  |         | LJB T. C. DALLAS       |             |             |   | COTEAU SKYLINE U612      |           |           |             |             |              |              |             |
| DIAMOND PLUS CATTLE GACKLE ND                 |         |         |                        |             |             | DIAMOND PLUS CATTLE GACKLE ND   |                          |           |           |             |             |              |              |             |
| <b>EBS ELKER MACHINE 419E</b>                 |         |         | <b>1</b>               | <b>8.5</b>  | <b>2.7</b>  | <b>68</b>   | <b>104</b>               | <b>16</b> | <b>50</b> | <b>2.5</b>  | <b>-0.2</b> | <b>-10.1</b> | <b>-0.10</b> | <b>0.35</b> |
| 214269  | 3/7/17  | FB      |                        | 0.20        | 0.51        | 0.44  | 0.47                     | 0.17      |           | 0.17        | 0.24        | 0.40         | 0.20         | 0.32        |
| RED   | POLLED  |         | EBS ELKER 1121 642A    |             |             |   | EBS MISS ELKER 1121 880B |           |           |             |             |              |              |             |
| ELKINGTON BROS & SONS IDAHO FALLS ID          |         |         |                        |             |             | ELKINGTON BROS & SONS IDAHO FALLS ID                                      |                          |           |           |             |             |              |              |             |
| <b>JVM EDGE 753E</b>                          |         |         | <b>4</b>               | <b>8.5</b>  | <b>2.0</b>  | <b>61</b>   | <b>88</b>                | <b>15</b> | <b>45</b> | <b>0.5</b>  | <b>-0.3</b> | <b>-2.3</b>  | <b>-0.07</b> | <b>0.44</b> |
| 213244  | 3/12/17 | PB      | 2                      | 0.41        | 0.44        | 0.43  | 0.43                     | 0.15      |           | 0.18        | 0.33        | 0.41         | 0.29         | 0.41        |
| BLK   | POLLED  |         | JVM ZEKE 252Z          |             |             |   | TLC NAVY 1889B           |           |           |             |             |              |              |             |
| JVM CATTLE COMPANY PELLA IA                   |         |         |                        |             |             | LANCE A BRANTNER ELLSWORTH WI   |                          |           |           |             |             |              |              |             |
| <b>KNN MARSHALL 8G</b>                        |         |         | <b>1</b>               | <b>7.6</b>  | <b>3.3</b>  | <b>53</b>   | <b>75</b>                | <b>11</b> | <b>37</b> | <b>1.7</b>  | <b>-0.4</b> | <b>0.5</b>   | <b>-0.11</b> | <b>0.65</b> |
| 215372  | 3/18/19 | FB      |                        | 0.40        | 0.46        | 0.43  | 0.42                     | 0.17      |           | 0.21        | 0.32        | 0.43         | 0.34         | 0.43        |
| RED   | POLLED  |         | KNN MIDWEST 20D        |             |             |   | KNN KIZA 3Z              |           |           |             |             |              |              |             |
| KNN FARMS BAY CITY WI                         |         |         |                        |             |             | KNN FARMS BAY CITY WI ;   |                          |           |           |             |             |              |              |             |
| <b>KNN MIDWEST 20D</b>                        |         |         | <b>3</b>               | <b>6.3</b>  | <b>4.2</b>  | <b>54</b>   | <b>80</b>                | <b>9</b>  | <b>36</b> | <b>1.2</b>  | <b>-0.2</b> | <b>-2.0</b>  | <b>-0.09</b> | <b>0.49</b> |
| 210364  | 4/15/16 | PB      | 5                      | 0.24        | 0.50        | 0.40  | 0.38                     | 0.16      |           | 0.16        | 0.12        | 0.31         | 0.11         | 0.30        |
| RED   | POLLED  |         | KNN MIDWEST 15B        |             |             |   | KNN CHERRIE BOMB 10X     |           |           |             |             |              |              |             |
| KNN FARMS BAY CITY WI                         |         |         |                        |             |             | JVM CATTLE COMPANY PELLA IA   |                          |           |           |             |             |              |              |             |
| <b>KNN RENO 20E</b>                           |         |         | <b>2</b>               | <b>10.0</b> | <b>0.2</b>  | <b>46</b>   | <b>57</b>                | <b>9</b>  | <b>32</b> | <b>3.6</b>  | <b>-0.2</b> | <b>-21.8</b> | <b>-0.10</b> | <b>0.22</b> |
| 212365  | 4/16/17 | PB      |                        | 0.17        | 0.41        | 0.35  | 0.35                     | 0.15      |           | 0.14        | 0.05        | 0.29         | 0.05         | 0.24        |
| RED   | POLLED  |         | KNN RIO GRAND 25B      |             |             |   | KNN CHERRY BOMB 8A       |           |           |             |             |              |              |             |
| KNN FARMS BAY CITY WI                         |         |         |                        |             |             | KNN FARMS BAY CITY WI   |                          |           |           |             |             |              |              |             |
| <b>MD EFFORTLESS 2E</b>                       |         |         | <b>8</b>               | <b>12.2</b> | <b>-1.0</b> | <b>63</b>   | <b>91</b>                | <b>11</b> | <b>42</b> | <b>3.3</b>  | <b>-0.2</b> | <b>-8.8</b>  | <b>-0.08</b> | <b>0.31</b> |
| 216095  | 3/27/17 | FB      |                        | 0.22        | 0.42        | 0.38  | 0.38                     | 0.09      |           | 0.14        | 0.18        | 0.30         | 0.14         | 0.25        |
| RED   | POLLED  |         | DLCC COWBOY JO 81C     |             |             |   | KNN STRAWBERRY 38C       |           |           |             |             |              |              |             |
| MARVIN AND DENISE MUMM KIMBERLY ID            |         |         |                        |             |             | MARVIN AND DENISE MUMM KIMBERLY ID; LONN CAMPBELL MCINTOSH SD;            |                          |           |           |             |             |              |              |             |
| DLCC RANCH PIERZ MN                           |         |         |                        |             |             | DLCC RANCH PIERZ MN   |                          |           |           |             |             |              |              |             |
| <b>SBCC DAKOTA 6131</b>                       |         |         | <b>3</b>               | <b>10.6</b> | <b>0.9</b>  | <b>66</b>   | <b>96</b>                | <b>19</b> | <b>52</b> | <b>4.8</b>  | <b>-0.3</b> | <b>1.7</b>   | <b>-0.11</b> | <b>0.60</b> |
| 211058  | 3/13/16 | FB      |                        | 0.16        | 0.42        | 0.35  | 0.35                     | 0.16      |           | 0.14        | 0.15        | 0.28         | 0.13         | 0.24        |
| RED   | POLLED  |         | MJB SWAGGER 330Z       |             |             |   | HB589S                   |           |           |             |             |              |              |             |
| SHOWBOAT CATTLE CO WINCHESTER KS              |         |         |                        |             |             | SHOWBOAT CATTLE CO WINCHESTER KS ;  |                          |           |           |             |             |              |              |             |
| <b>TC DIRECTION 652D</b>                      |         |         | <b>1</b>               | <b>6.9</b>  | <b>2.3</b>  | <b>69</b>   | <b>96</b>                | <b>20</b> | <b>55</b> | <b>-0.2</b> | <b>-0.1</b> | <b>-9.5</b>  | <b>-0.10</b> | <b>0.47</b> |
| 210664  | 3/6/16  | FB      | 2                      | 0.27        | 0.50        | 0.43  | 0.39                     | 0.21      |           | 0.18        | 0.12        | 0.32         | 0.09         | 0.29        |
| BLK   | POLLED  |         | CIMARRON DEFENDER 443B |             |             |   | CIMARRON CLIMAX 301A     |           |           |             |             |              |              |             |
| BOLLENBACH CATTLE COMPANY KINGFISHER OK       |         |         |                        |             |             | TRIPLE CROWN SOUTH DEVON FARM RUSSELLVILLE MO                             |                          |           |           |             |             |              |              |             |
| <b>TC EXCALIBUR 710E</b>                      |         |         | <b>1</b>               | <b>8.9</b>  | <b>1.0</b>  | <b>66</b>   | <b>92</b>                | <b>11</b> | <b>44</b> | <b>0.4</b>  | <b>-0.3</b> | <b>-12</b>   | <b>-0.10</b> | <b>0.41</b> |
| 212417  | 1/27/17 | FB      | 2                      | 0.18        | 0.48        | 0.41  | 0.39                     | 0.20      |           | 0.18        | 0.18        | 0.31         | 0.13         | 0.27        |
| RED   | POLLED  |         | CIMARRON AVENGER 135Y  |             |             |   | TC YEARN                 |           |           |             |             |              |              |             |
| TRIPLE CROWN SOUTH DEVON FARM RUSSELLVILLE MO |         |         |                        |             |             | MEYER FARMS COLE CAMP MO  |                          |           |           |             |             |              |              |             |



## International Highlights

- South Devons steers excel at EKKA 2021 and the Southern Grainfed Carcass Classic in Australia. For more information log on to <https://southdevonaustralia.com>
- The World South Devon Congress and Tour has been tentatively re-scheduled for the Fall of 2023 in New Zealand. More information and updates about the tour and South Devon happenings can be found at <https://www.southdevon.co.nz>
- The South Devon Herd Book Society in the United Kingdom has comprehensive coverage of South Devon shows, sales, carcass competitions and special events at <https://www.sdhbs.org.uk>
- South Devon prices in South Africa are flourishing. Records are being set across the country. To read more about the sales and events in South Africa, <https://www.southdevon.co.za>



## VHF Black Cherry 91J

1st Offspring of: FC Renegade 5G

*Semen Available*

Valley Hill Farm & LAB Livestock

**TODD LEONARD**

715-338-1382

**LANCE A BRANTNER**

651-214-9918

[tdleonard@live.com](mailto:tdleonard@live.com) • Ellsworth, Wisconsin

## TRIPLE CROWN SOUTH DEVONS

MORE THAN 25 YEARS OF BREEDING EXCELLENCE



RANDY & SHARON CAMPBELL  
(573) 782-3418 | (573) 694-0179  
[RSCAMPBELL1984@GMAIL.COM](mailto:RSCAMPBELL1984@GMAIL.COM)  
RUSSELLVILLE, MO.

# TLC

*Thompson Land & Cattle*

## SELLING BULLS OUT OF PROVEN SIRES

SIRES ARE TLC UINTAH,  
TLC VALIANT, TLC CROWN  
ROYAL 405, TLC GAME  
CHANGER 3940,  
TLC GENERAL PATTON,  
TLC ROCK 8273 &  
TLC CROWN ROYAL 1023.

35 BULLS CURRENTLY ON  
TEST. DELIVERY AVAILABLE  
MID-MAY.

YEARLING HEIFERS FOR SALE.

*Videos available in April*



*All registered Purebred South Devon  
and Angus Red Angus  
South Devon Poundmakers  
These bulls come from proven maternal sires.*



*You can find it all at Thompson Land & Cattle*

### THOMPSON LAND & CATTLE

6629 100th Street SW, Motley, MN 56466

Jace (801) 391-8989 • Email [thebrick25@gmail.com](mailto:thebrick25@gmail.com)

[www.thompsoncattle.com](http://www.thompsoncattle.com) • Females and Semen for Sale Private Treaty

*South Devon Angus crosses that work for the beef industry!*

## ALSO SELLING FALL YEARLING BULLS AT THE MIDLAND BULL TEST

# *The Backbone of Our Future*

## **South Devon Juniors**

### ADVOCATES FOR THE BREED



2022 – Connor Porath, donated by KNN Farms, Bay City, WI



2020 - Shelby Krebs, donated by Gnech Farms, Malin, OR



2019 - Levi Kramer, donated by Thompson Land & Cattle, Motley, MN



2018 - Adree Stapp, donated by DLCC Ranch, Pierz, MN & Scotchlands Farm, Armstrong, BC



2017 - Nicole Kibler, donated Bar E Cattle, Clinton, NC



2016 - Wyatt Lawrence, donated by DLCC Ranch, Pierz, MN



2015 - Saavy Weimer, donated by Dahl Land & Cattle Company, Gackle, ND



2014 - Katelyn Horner, donated by JVM Cattle Company, Pella, IA



2013 - Jacob Allen, donated by MJB Ranch, Lodgegrass, MT

## APPLICATIONS DUE OCT. 1, 2022

**Heifer will be presented at the 2023 NWSS, Denver, CO**  
**2023 heifer is being donated by 9 Mile Ranch, Kristin Dykes in memory of Josh Dykes**

**WWW.SOUTHDEVON.COM**

# Bar/E Cattle Co. South Devon

*2017 Seedstock Producer of the Year*

Congratulations Nicole Kibler  
2017 NASDA Youth Experience  
Heifer Recipient of

**Bar E Teddy**  
donated by Bar/E Cattle Co.



*Heifers For Sale*

**Steve & Barbara Elmore**

1235 W. Mt. Gilead Church Rd.  
Clinton, N.C. 28328  
Cell: 910-385-6200  
sandbelmore@centurylink.net

# HOXIE HILL FARM

Your Source for South Devon Genetics in the Northeast



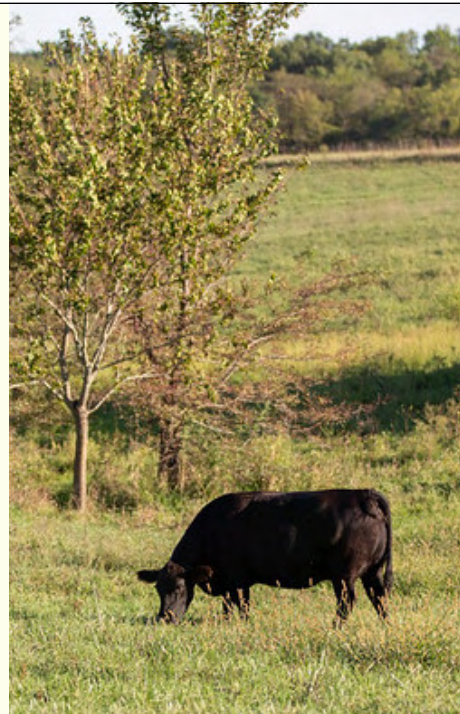
**BULLS AND FEMALES FOR SALE**

Mike VandenBerg  
55 Ward Road, Hammond, NY 13646

Join us at the  
**NEW YORK FARM EMPIRE DAYS**  
AUGUST 2-4, 2022

## SERVING UP QUALITY SOUTH DEVON GENETICS *In the Pasture and On the Plate*

- Good Quality South Devon Beef
- Pasture-raised, free choice local grains
- No antibiotic or growth hormones
- Inspected by the Missouri Department of Agriculture
- Master Cutters - Ryan Hughs and Jordan Lopez



**ALUMBAUGH FARMS**

**DR. DALE & TERESA ALUMBAUGH**

545 W. Hwy 6, Trenton, Missouri 64683  
(660) 358-1509 • alumbaughfarms@gmail.com



## The Profitable English Outcross

“The challenge to crossbreeding, is finding the right breed to cross on Angus. The South Devon breed keeps Angus marbling, adds muscularity and increases carcass weight. For these reasons, South Devon is the best British breed crossbreeding option. In addition, the smart commercial ranchers will seek genetics that improve the profitability of their herd. When we add them to our composites, they sort out as some of our very top cattle on our \$Profit index and their genetics will play a big role in our Stabilizer composite in the coming years. The South Devon breed is ideally positioned to establish itself as a key player in profitable beef production.”

**Lee Leachman**

*Leachman Cattle of Colorado  
Ft. Collins, Colorado*



The USDA Meat Animal Research Center (MARC) across-breed EPDs bare this observation out. When looking for a breed to cross with Angus, their data reveals that after Angus, the average South Devon has more marbling than any other breed and more ribeye area than any other British breed alternative in the MARC across-breed database.



# DLCC RANCH

SOUTH DEVONS | POUNDMAKERS | NAVIGATORS



## Honest Cattle. Real Results.

The maternal capability and outcross potential of South Devon has long kept DLCC firmly committed to the improvement of this breed and its usefulness to the commercial cow/calf industry. Our program strives to produce the most profitable genetics for our customer's bottom line, and this can only be done by trusting science and using it in all of our decisions. Our 30+ years in this business has taught us the importance of data collection, responsible crossbreeding, and the use of technology to make our selection decisions.

**Balanced Genetics**

**Only Black-Hided British Alternative to Angus**

**DLCC 3-Year Guarantee**

Join us on **Saturday, April 16<sup>th</sup> at the ranch near Pierz, MN** for the DLCC 30<sup>th</sup> Annual Production Sale.  
**80 Spring Bulls | 20 Fall 18-Month Bulls | 10 Elite Show Heifers | 30 Replacement Females | 15 Fall Pairs**

**Request a Catalog**

**[www.DLCCRANCH.com](http://www.DLCCRANCH.com)**

Dar Giess: (320)-249-2130 | Lane Giess: (320)-293-1647 | Wyatt Lawrence: (763)-242-2804

# Nichols Farms

*Superior Beef Genetics*

**HEADED IN THE  
RIGHT DIRECTION  
WITH SOUTH DEVON**



## **The commercial market-place has responded!**

Real world cow/calf operations have found that Nichols South Devon genetics have delivered as promised and they are putting their money on them. It's because they have added heterosis, fertility, increased weaning weights and top prices at sale barns. Feedlots have realized feed efficiency,

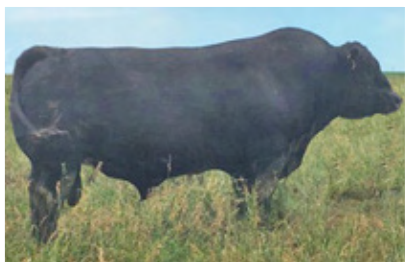
rate of gain and bottom-line profits. Those who are selling locker beef have gained new customers because of good-tasting, tender beef. We have and will continue to live up to our name to provide and deliver Superior South Devon Beef Genetics that add value from Conception to Consumer.



**DAVE NICHOLS**

**Join us in January for our Private Treaty Bull Sale.**

Bulls and females for sale throughout the year.



**Nichols Majestic Y808**



**NFL Untouchable 042**  
Co-owned with Neil Hagger,  
South Australia



**Nichols Black  
Perfection X835**

**[www.nicholsfarms.biz](http://www.nicholsfarms.biz)**



**FOLLOW US ON FACEBOOK**