

Spring 2023 | Volume 8 | Edition 1

SOUTH DEVON

R E V I E W



RETIREMENT

Sale!

*The Nation's Largest South Devon Herd
will be available this Spring and Summer*



We love everything about these cattle and what they have done for us and our customers. This is a herd of performance selected cattle. The cattle have been very competitive since the grand kids started showing. The comparative data on the sires we have raised or purchased says it all. At the Midland Bull Test they have proven to be very efficient and high performing while providing a very tender, tasty end product.

Due to age and health, we have to slow down. We are breeding 340 South Devon and composite cows and 40 heifers. We want to end up with 50 bred cows and heifers. Our reduction is your opportunity. We will sell 1 to a trailer load or a semi load of an age group or 2 depending on price private treaty this spring and summer.

Please call or visit at your convenience

Thanking you sincerely,

Jim and Mary Brown & family



You can reap the rewards of our 40 years with Breed Leading Genetics including:

	Reg #	CED	BW	WW	YW	Milk	REA
MJB EXTRA 771E	212167	5	0.7	65	106	10	0.79
NICHOLS PROGRESS DSJ038	219463	7.8	2.3	98	152	21	0.57
MJB PROGRESS 892F	213833	6.9	1.2	80	132	22	0.24
MMM UNTOUCHABLE W810	199405	11.4	-0.1	72	105	19	0.62
MJB DILLON 689D	209901	9.2	2.4	74	117	25	0.69
NFL PROGRESS DSB014	206246	7.5	1.8	86	136	2	0.49
JVM FLYNN 853F	214382	11.9	0.6	64	93	27	0.67
BC PROGRESS 315U	194458	5.5	1.4	77	133	21	0.49
MJB COOL 548C	208541	8.8	-0.2	62	92	18	0.59
MJB SWAGGER 330Z	201818	10.2	-0.1	62	96	16	0.67

Providing 2 semen straws from our inventory with every female purchased.



www.MBJCATTLE.com

JIM AND MARY BROWN
BOX 259
LODGE GRASS, MONTANA 59050

JIM - (406) 679-0309
(406) 639-2569



YOUR SOURCE FOR SOUTH DEVON GENETICS IN THE WEST

Midland Bull Test

THE FINAL SORT

April 6, 2023

*6 Age-Advantaged South Devon Bulls
13 South Devon Yearling Bulls*



*2022 Champion High
Indexing and High Efficiency
South Devon Bulls*

**MJB Ranch
Lodge Grass, MT**

Bulls are measured for Performance, Efficiency, Maternal and Carcass
Semen Tested, Carcass Ultra-sounded, Screened for Soundness and Disposition
BVD-PI Tested Negative, Tested for efficiency (RFI) and Feed Conversion

MJB Ranch
Box 259
Lodge Grass, MT 59050
(406-679-0309)

Royal Beef Genetics
21321 State Hwy. 29
Starbuck, MN 56381
(320) 287-0751

**Thompson Land
& Cattle Company**
6629 100 Street SW
Motley, MN 56466
(801) 391-8989

Advertiser Directory

Alumbaugh Farms.....	24
Bar/ E Cattle Co.....	24
DLCC Ranch.....	Inside back cover
Elkington Polled Herefords & South Devon	34
Gnech Farms.....	30
Hoxie Hill Farm.....	24
KNN Farms	55
Mallett South Devons & Poundmakers.....	44
Midland Bull Test.....	3
MJB Ranch	Inside front cover
Nichols Farms.....	Back cover
North American South Devon Association	58
NASDA Youth Experience Heifer	56
NASDA Jr Association - Junior Nationals.....	11
NASDA Steer Profitability Competition	57
Northern States South Devon Association	55
Popken South Devon	44
Sadler Cattle Co.	10
Thompson Land & Cattle	40
Triple Crown South Devons.....	29
Valley Hill Farm	44
Walnut Grove Farm	30
Walnut Lane Farm.....	54
Western States South Devon.....	9
World South Devon Tour & Conference	29
Zimmer Land & Livestock.....	34

Staff

Lynn Giess.....	Editor
Sherry Doubet	NASDA Registry

Cover photo by Kate Giess

Editorial Design by Shannon Krueger, Allegro Creative LLC, Abilene, KS



@2023 North American South Devon Association. All rights reserved. Reproduction without permission from the North American South Devon Association is prohibited. The North American South Devon Association is not responsible for claims made by Advertisers in The South Devon Review. The North American South Devon Association is not responsible for unsolicited materials. Contributors are invited to submit photographs and manuscripts pertaining to South Devon cattle and their producers. Preference is given to material accompanied by photographs (300 dpi). All material and photographs are subject to editing and revisions.

Please send address changes to: North American South Devon Association, PO Box 850, Big Horn, WY 82833.

Published annually by the North American South Devon Association dedicated to the promotion and improvement of breeding, feeding and marketing South Devon cattle.



From the President.....	6
2023 Board of Directors	7
Committee Appointments.....	7
News & Notes	8
Faces & Places	37
2023 Membership Directory	41
2023 Sire Summary.....	45

Contents

12	Walnut Lane Farm 2023 Commercial Producer of the Year
14	Mike VandenBerg 2023 Seedstock Producer of the Year
16	A Genomics Bull Buying Guide A producer's guide to buying bulls
20	Dallas Hill Youth Heifer Recipient
21	Iowa State Fair
23	MN Beef Expo
25	Showdown in Good Ol' Curdtown 2022 Junior Nationals
31	50th National Show National Western Stock Show
35	Northern International Livestock Exposition

Positioned for Growth

The cattle industry knows volatility. Even with that experience, the number of negative external forces working on agriculture is astounding. Navigating through those changes is taking every tool in the cattle producer's arsenal.

While we can't eliminate the effects of weather, conflict around the world, regulatory uncertainty, inflation and more, producers through cooperation can use our collective strength to secure a sustainable future.

Today the North American South Devon Association and South Devon producers, continue to use tools available to promote and demonstrate that South Devon cattle are "The Profitable English Outcross".

Both seedstock and commercial producers continue to benefit from the alliance with International Genetic Solutions. Not only do we receive the most accurate and timely EPDs ever provided for our breed, we are now able to receive Genomic Enhanced EPDs. Once again, to remain sustainable in the cattle industry, the role of South Devon producers, now and into the future is to collect and provide all data to the association. By gathering all of this data, will lead to the South Devon breed having increasingly precise EPDs and accurate information to offer our buyers.

Last year several breeders participated in the carcass merit program held at the University of Missouri test station to obtain carcass data. Due to it's success, the NASDA board has approved a carcass competition to begin with 2023 born animals. More information is included in this issue of the Review.

During the recent National Cattlemen's Beef Association industry convention, the Cattle Fax outlook session reported that the forecast for the year calls for moisture in many parts of the country that have been facing drought conditions for a long time. For cow/calf producers, the market signals are strong and consistent. With the U.S. Beef Cow Inventory report showing a 1-million head decline, about 170,000



head above the record low from 2014, prices are projected to increase. The recent bull sales are strong and bred female averages are increasing. Unfortunately, weather events are presenting unique challenges for producers during the 2023 calving season.

Pulling together as an association, we can face the challenges and continue to produce a quality product.

There are several events scheduled for 2023 that breeders can attend and participate in, including the Junior

National to be held in Mount Ayr, Iowa, the Northern International Livestock Exposition, Iowa State Fair and the Minnesota Beef Expo. Members are also offering quality genetics privately and through the Midland Bull Test Sale, St. Croix Valley Bull Test, DLCC Ranch sale and other sales across the country. I would encourage you all to attend, participate and support the events.

The South Devon family came together at the recent 50th National Show in Denver, Colorado. Members and exhibitors made the breed proud, by displaying a high-quality set of cattle. Congratulations to all the juniors, parents, exhibitors and winners for their dedication to the breed. The banquet and benefit auction, was very well-attended, and supporters showed up to support the juniors and exhibitors.

There's no doubt these are complicated times, but if we all work together, by increasing submission of data to the association, accuracy and efficiency will be the key to profitability. This includes genomic testing, carcass data, ultrasound data, body condition scores, udder and docility scores and of course the mandatory, birthweight, weaning weight and yearling weights. By providing accurate data, the South Devon breed will be favorably positioned for growth.

Sincerely,

Dar Giess

NASDA President

2023 BOARD OF DIRECTORS

Dar Giess, President

33424 183rd Street, Pierz, MN 56364
(320) 249-2130 • dlccranch@outlook.com

Kurt Nelson, Vice President

W5137 290th Avenue, Bay City, WI 54723
(715) 594-3805 • knnfarmswi@gmail.com

Joel Popken, Treasurer

33360 220th Street, Swanville, MN 56382
(320) 547-2202 • jpopken@wisper-wireless.com

Dr. Dale Alumbaugh

193 SW 52nd Avenue, Trenton, MO 64683
(660) 359-7808 • farmer6th@live.com

Jim Brown

Box 259, Owl Creek Road, Lodge Grass, MT 59050
(406) 679-0309 • mjb_cattle2@hotmail.com

Keith Elkington

5080 East Sunnyside Road, Idaho Falls, ID 83406
(208) 523-2286 • ephrbulls@hotmail.com

Stephen Elmore

1235 W Mt. Gilead CH Rd., Clinton, NC 28328
(910) 385-6200 • sandbelmore@centurylink.net

Lane Giess

324 E. Foothills Parkway, Apt. 208, Fort Collins, CO 80525
(320) 293-1647 • lane.giess@gmail.com

Gino Gnech

20990 Morelock Road, Malin, OR 97632
(530) 905-0817 • jackignech@yahoo.com

Jared Mumm

1717 Division Street, Commerce, TX 75428
(208) 308-5785 • jared.mumm@yahoo.com

Carroll Nelson

150 Howie Road, Big Timber, MT 59011
(406) 690-8731 • cnelson@midrivers.com

Mike Steinlicht

16764 North Cedar Road, Valley Falls, KS 66088
(785) 224-8860 • m_steinlicht@yahoo.com

COMMITTEE APPOINTMENTS

Executive

Dar Giess, Jim Brown, Kurt Nelson, Joel Popken

Finance

Joel Popken, Chairman, Kurt Nelson, Jim Brown, Dr. Dale Alumbaugh, Carroll Nelson

Rules & Ethics

Dr. Dale Alumbaugh, Chairman, Keith Elkington, Steve Elmore, Dar Giess, Carroll Nelson, Joel Popken

Show, Sales & Events

Dar Giess, Chairman, Jim Brown, Joel Popken, Lane Giess, Jordan Vander Molen, Kurt Nelson, Gino Gnech

Membership & Junior Programs

Kurt Nelson, Chairman, Jordan Vander Molen, Jared Mumm, Lynn Giess, Mike Steinlicht, Charles Terry, Gino Gnech

Performance, Carcass, IGS Programs

Lane Giess, Chairman, Jared Mumm, Jim Brown, Dar Giess, Joel Popken

Breed Improvement & Promotion

Kurt Nelson, Chairman, Mary Brown, Keith Elkington, Lane Giess, Lynn Giess, Gino Gnech, Jared Mumm, Mike Steinlicht

NASDA Registry Office

Sherry Doubet

PO Box 850, Big Horn, WY 82833
Phone: 303-770-3130 • Fax: 303-770-9302
info@southdevon.com

NASDA Communications

Lynn Giess

33424 183rd Street, Pierz, MN 56364
southdevon_lynn@outlook.com • 320-250-9121
www.southdevon.com

NASDA BOARD OF DIRECTORS MEETING HIGHLIGHTS

- Initiated a carcass competition, to be held at the University of Missouri Beef Research & Teaching Farm in Columbia, Missouri. Awards will be granted for the top three animals overall, top three pens and top animal. For more information contact Dar Giess, 320-249-2130.
- Approved funding for the 2023 Junior National, 2023 Northern International Livestock Exposition South Devon Show and the South Devon booth at the National Cattlemen's Beef Association convention.
- Approved continuation of Youth Experience Program.

DNA REQUIREMENTS

The North American South Devon Association requires all South Devon sires to have a low-density genotype on file with the NASDA office on all sires of 2023 calves.

DNA SERVICES

All DNA services and supplies must be coordinated through the North American South Devon Association office. A NASDA, DNA Cattle Testing and Summary Form is available on the NASDA website and must be submitted with all samples. DNA samples must be submitted to NASDA, PO Box 850, Big Horn, WY 82333 and the testing form e-mailed to info@southdevon.com.

BODY CONDITION SCORES (BCS)

In order to calculate more accurate indexes, NASDA is encouraging members to record body condition scores and cow weights. The Beef Improvement Federation has recommended guidelines and best practices and the best time to record a BCS is at weaning. A .50 rebate will be given by NASDA to members for each BCS turned in.

LETTER L FOR 2023

The year-letter animal identification letter for 2023 is "L" and will be followed by "M" in 2024.

MEMBERSHIP

The active adult membership fee is \$100 annually. The active annual junior membership fee is \$20. Please note if you are planning to participate in a NASDA sponsored open or junior show, you must be a member in good standing with the association. Juniors will

be required to pay junior dues to participate in the upcoming Junior National in Mount Ayr, Iowa.

NASDA PUBLICATION ACCEPTING PHOTOS

The NASDA South Devon Review is looking for cover, editorial and advertising photos. Categories to consider: cattle in different environments, pasture, feedlot, show and sale; people working with cattle; industry-related events; and general ranch photos. Photos should strongly represent the principals and focus of the South Devon association. Vertical or horizontal format is acceptable. NASDA will pay \$100 for photos used on the cover of the South Devon Review and \$50 for those used in South Devon advertisements. Photos received by NASDA are assumed to be released by the photographer and permission given to NASDA and the South Devon Review for use. Send high-resolution photos to southdevon_lynn@outlook.com.

BEEF QUALITY ASSURANCE (BQA)

The National BQA Program has placed a high priority on animal-handling issues and developed a variety of resources for producers working to improve. Online BQA self-assessment tools are available for cow/calf, stocker and feedlot producers. Find these tools and other information about the BQA program at www.BQA.org.

NATIONAL 2023 BQA COW-CALF AWARD WILSON FLYING DIAMOND RANCH

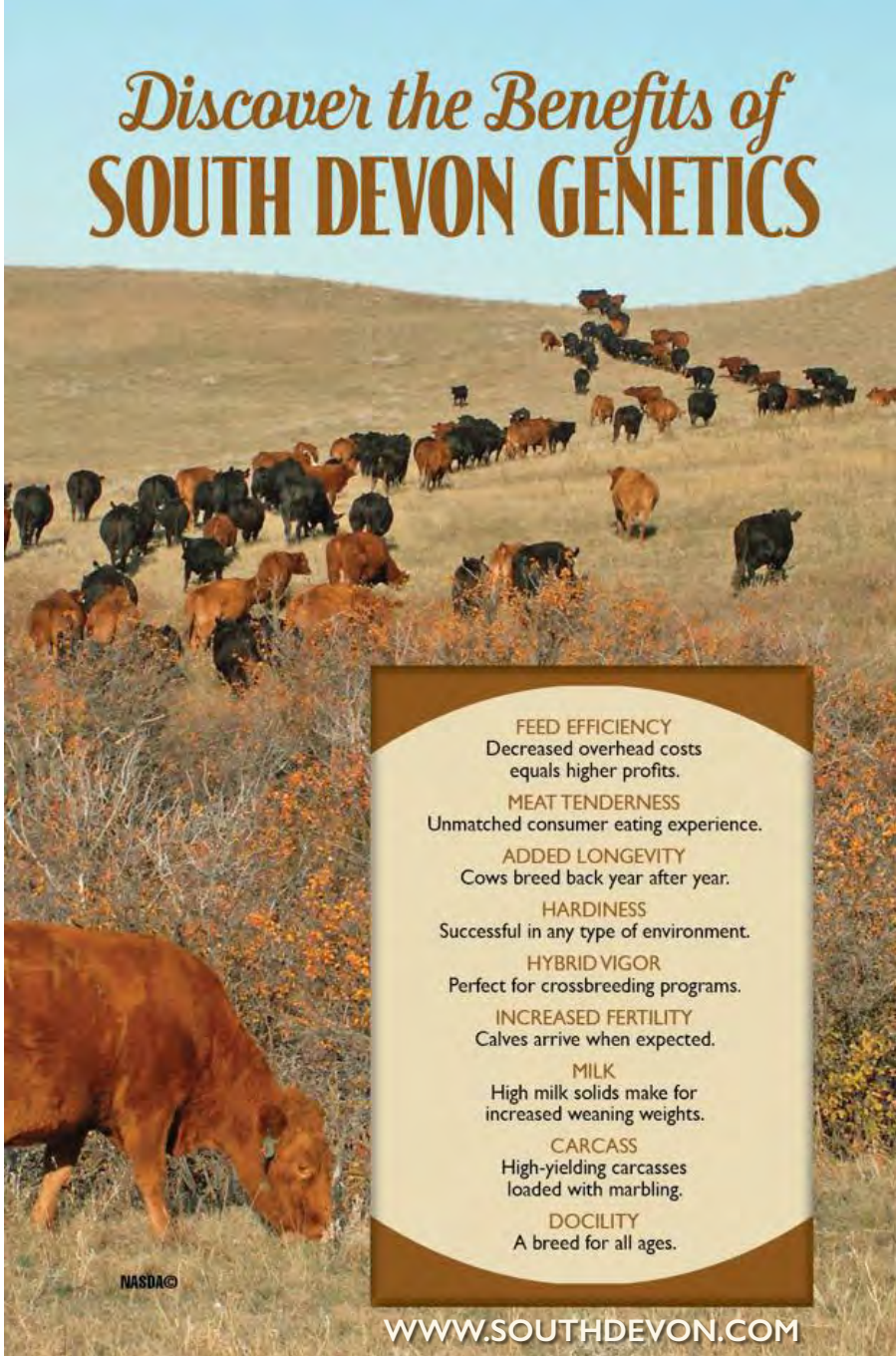
Located on the western edge of the Nebraska Sandhills since 1888, the family behind the Wilson Flying Diamond Ranch has passed down its forward-thinking mindset for generations. The ranch is now owned and operated by the family's fourth and fifth generations, Blaine Wilson and his daughter Jaclyn. The Wilson family has transformed its operation of more than 800 head of Red Angus and composite cattle into a quintessential example of proper conservation and environmental management. The ranch adheres to strict stewardship principles focused on pasture rotation, facilitated by computer programming and mapping. The ranch also uses year-round grazing management to ensure they are continuing to improve the land in the fragile Sandhills.

W.D. FARR SCHOLARSHIP

Lane Giess, NASDA board member and graduate student at Colorado State University, Ft. Collins, CO was the recipient of the National Cattlemen's Foundation 2022 W.D. Farr scholarship. Giess was selected based on his academic achievements, leadership and commitment to the advancement of the beef industry. Giess grew up on his family's seedstock cattle ranch in central Minnesota and quickly learned the value of genetics. After earning bachelor's and master's degrees in animal science from Kansas State University, Giess was accepted to Colorado State University's animal science doctoral program. He is studying quantitative animal breeding and genetics with an emphasis in developing genetic evaluations to improve fertility, longevity and economic sustainability of commercial cattle. Giess is looking forward to contributing to the advancement of genetic technologies making cattle producers more profitable. "Receiving the W.D. Farr Scholarship will help me become a better researcher, a better leader and validate my commitment to the beef industry," Giess said. The scholarship honors the successful career of the late W.D. Farr who was a third-generation Coloradan, pioneer rancher, statesman and banker known for his extraordinary vision.

YOUTH EXPERIENCE APPLICATIONS

The deadline for the 2024 NASDA Youth Experience heifer application is November 8, 2023. Juniors interested in applying for the heifer can visit the junior page at www.southdevon.com. The 2024 heifer is being donated by C/N Ranch, Big Timber, Montana.



Discover the Benefits of
SOUTH DEVON GENETICS

FEED EFFICIENCY
Decreased overhead costs equals higher profits.

MEAT TENDERNESS
Unmatched consumer eating experience.

ADDED LONGEVITY
Cows breed back year after year.

HARDINESS
Successful in any type of environment.

HYBRID VIGOR
Perfect for crossbreeding programs.

INCREASED FERTILITY
Calves arrive when expected.

MILK
High milk solids make for increased weaning weights.

CARCASS
High-yielding carcasses loaded with marbling.

DOCILITY
A breed for all ages.

NASDA®

WWW.SOUTHDEVON.COM

NEWS & NOTES

WORLD SOUTH DEVON SOCIETY UPDATE

The zoom meetings held by the World South Devon Society are open to South Devon breeders from around the world. The meeting agenda includes updates from each country, special guests and future plans for the organization. For more information contact southdevon_lynn@outlook.com.

ELKINGTON POLLED HEREFORDS & SOUTH DEVON 44TH ANNUAL SALE Idaho Falls, Idaho • February 3, 2023

- 22 South Devon Bulls averaged \$3163
- 105 Hereford & South Devon Bulls averaged \$3308
- 35 Hereford & South Devon Heifers averaged \$1700

Top South Devon sellers:

- Lot 401J, EBS ELKER EXTREEM 401J a son of EBS ELKER MACHINE 419E sold for \$6200 to Curt Owen, Montana
- Lot 445J and 478J South Devon heifers were purchased by Whispering Pine Farms of Montana for \$2300 each.

SADLER CATTLE CO.



Jim, Gail, Dillon and Madeline Sadler
21140 St. Francis Blvd. • Anoka, MN 55303

Jim: 612-581-8706
jwbulldog2@gmail.com

Dillon: 763-370-1606
dillon.jsadler@gmail.com

2023 CALENDAR HIGHLIGHTS

MIDLAND BULL TEST

April 6

Columbus, Montana
midlandbulltest.com

NASDJA 'JUNIOR NATIONAL'

June 28-July 2

Mount Ayr, Iowa
southdevon.com

MINNESOTA BEEF EXPO

JUNIOR SHOW

October 19-22

St. Paul, Minnesota
mnbeefexpo.com

ST. CROIX VALLEY BULL TEST

April 15

River Falls, Wisconsin
scvbt.com

IOWA STATE FAIR

August 11-14

Des Moines, Iowa
iowastatefair.org

51ST NATIONAL SOUTH

DEVON SHOW

January 5-10, 2024

Denver, Colorado
nationalwestern.com

DLCC RANCH ANNUAL SALE

April 15

Pierz, Minnesota
dlccranch.com

NILE SOUTH DEVON & POUNDMAKER SHOW

October 13-21

Billings, Montana
thenile.org

ELKINGTON ANNUAL PRODUCTION SALE

February 2, 2024

Idaho Falls, Idaho
ephrbulls@hotmail.com



NORTH AMERICAN SOUTH DEVON

junior
association

**JUNE 28-
JULY 2** 2023

Mount Ayr, Iowa

join us for the
**JUNIOR NATIONAL SHOW &
LEADERSHIP CONFERENCE**

SHOW CHAIR

The Kniep Family

Shaun - 641-340-0304

Jillian - 641-234-0945

jill.knief@gmail.com

Clint - 641-344-0623

LODGING

Mount Ayr Inn and Suites

641-464-3500

Book by May 15th

Mount Ayr Campgrounds

Full electricity and water.

Call Shaun or Clint to make reservations.

**Fogle Lake Cabins
and Campground**

15 miles from fairgrounds

610 8th Street

Diagonal, IA 50845

641-734-5491

TENTATIVE EVENT SCHEDULE

Wednesday, June 28

8am - 6pm Arena Barn available for Set-up
and Check-in & Steer Weigh in

Thursday, June 29

All Cattle in Place by 8am

8 a.m. Breakfast

8:30 a.m. Exhibitor Meeting & Election
of Junior Officers

9 a.m. Check-in of posters, photography,
speeches

9:30 a.m. Speech, Marketing Contest & Quiz Bowl

12 p.m. Lunch Break

2 p.m. Ag-Olympics

4:30-5 p.m. Cattle to tie-outs

6:30 p.m. Dinner & Bowling

Friday, June 30

8 a.m. Group & States Photos

Breakfast served following photos

9:30 a.m. Opening Ceremonies & Introduction of
2023 Ambassadors

10 a.m. Poundmaker Show. Bred-and-Owned
Show: Heifers, Bulls and Steers.

12:00 p.m. Lunch Served

1:00 p.m. Werner Family Angus Farms Tour

5-6 p.m. Cattle to tie-outs

Saturday, July 1

8 a.m. Breakfast

10 a.m. Dedication

10:30 a.m. Purebred show followed by Showmanship

12-2 p.m. Lunch wagon available

Awards Celebration

Photos at Backdrop

End of Junior Nationals

5:00 p.m. Catered Meal

Sunday, July 2

All out of Barn and Off Fairgrounds by Noon.

ENTRY DEADLINE

June 1, 2023

ENTRY FORMS

<http://southdevon.com/juniors.html>

Walnut Lane Farm

THE KOEBKE FAMILY • DUDLEY, MASSACHUSETTS

By Hannah Gill

Walnut Lane Farm in Worcester County, Massachusetts has been in the Koebe family since 1910. Though they have mostly raised and milked dairy cattle since the beginning, towards the end averaging 2 million pounds of milk a year, the family run business branched out almost 10 years ago and introduced South Devon beef cattle to the farm and this year they are being honored as South Devon's Commercial Producer of the Year.

Because of their higher than average rainfall and subsequent high-quality forage, Jim Koebe says it felt natural to look into bringing grass-fed beef to the farm. In 2013, they bought some beef cattle from a neighbor that was getting out of business and in 2014, learned about the South Devon breed.

"That's when I met Mike VandenBerg in New York and he introduced me to Dar Giess," Koebe says. "They invited me out to Denver in 2014 and I really got a look at what the breed was doing."

It didn't take long for Koebe to be sold on the breed. He had been looking for an English breed that would marble well, being finished on grass and South Devon fit the bill. Walnut Lane Farm bought their first South Devon cattle that year from DLCC Ranch, Dahl Land and Cattle and Hoxie Hill Farm.



The farm's first set of South Devon cows purchased in 2014 surprised the Koebes with their good temperaments.

Today, Jim, his wife, Krisanne and their three sons have between 35 and 40 mother cows, and though they are small, all their beef is marketed through a retail system.

"Everything we finish, whatever heifers we don't bring back for breeding, are completely finished with all of our steers and sold to a retail market," Koebe says.

They have a small farm store and they market their beef and other products at a few farmer's markets around the area where they offer grass-finished South Devon beef, raw milk from their 10 dairy cows, milk-finished veal, milk-fed pork, broiler chickens and fresh eggs from their milk-fed laying hens. Everything works together at Walnut Lane Farm.

"They eat a lot less grain when they're drinking milk and it helps keep our costs down a little bit, it helps us balance a little bit," Koebe says. "We are deep into regenerative ag. We use no synthetic fertilizer here, we're just trying to keep things as natural as possible. We're all about the science behind regenerative ag."

They also practice adaptive grazing, moving the beef cattle every 24 hours to new grass which improves the vegetation, improves growth and recovery of the vegetation, improves the soil health and in turn, improves animal production relative to continuous grazing.

"Essentially, like your gut has a microbiome, so does the soil and we try to grow healthy soils, healthy grass and healthy cattle," Koebe says. "That's kind of our whole message that we use in advertising, along with advertising that we use South Devon cattle as well."

The meat processor that the Koebes use for their beef has given feedback numerous times saying that the quality of Walnut Lane Farm beef is consistently some of the best they see, and they butcher around 1,500 head of beef per year. A compliment that Koebe credits to having good forage, good management and the characteristics of South Devon cattle that give it such excellent marbling, interior fat and good flavor.



“Essentially, like your gut has a microbiome, so does the soil and we try to grow healthy soils, healthy grass and healthy cattle.”

Jim Koebke
Dudley, Massachusetts

The Koebkes practice adaptive grazing, moving the herd every 24 hours to new grass, as part of their focus on the health of their soils, grass and cattle.

Their herd of mother cows is 50 percent or greater South Devon and has some Angus influence, Koebke likes the diversity and the hybrid vigor that the cross brings to the table, but, like Dar Giess, he says he is always trying to get back to South Devon.

“When I look at bulls, I look for ribeye size, I’m looking for fertility, great foot and leg structure and moderate size,” he says. “I’m not so much a pedigree guy, we’ve got a Derby son here and an Untouchable son we got through Dar and both have worked fabulous, came here and went right to work.”

The first set of cows Koebke bought in 2014 had such good temperaments, Koebke was shocked. Today, most of those 10-year-old cows are still producing and Koebke has narrowed down what he looks for in his maternal herd.

“We like a small frame but I like a lot of width,” Koebke says. “I’d like a cow that can consume a lot of forage, calve easy, has a flat rump structure. I don’t like a high hip structure and that goes back to my dairy cow experience.”

And of course, fertility is a must. Something that Koebke is working on within his own herd by shortening breeding exposure windows and this year, the farm only had one open cow.

“We’re full bore on what we’re doing right now,” Koebke says of their operation, from the grass-fed beef to the various farm goods they sell. “I will put our beef up against anybody in the country. I think South Devon has helped us achieve that.” ❖



Introduced to Walnut Lane Farm nearly a decade ago, the South Devon breed has contributed to the success of the Koebke’s grass-fed beef operation.

2023 SEEDSTOCK
PRODUCER OF THE YEAR

Mike VandenBerg

HOXIE HILL FARM • HAMMOND, NEW YORK

By Hannah Gill



Mike VandenBerg, Hoxie Hill Farm, accepts the 2023 Seedstock Producer of the Year award from Ambassador Ciera Steinlicht and NASDA President Dar Giess.

Agriculture runs in Mike VandenBerg's blood. His grandparents lived on a farm in Holland that had been in the family for over 350 years, so it came as no surprise that young VandenBerg bought his first cow at the age of seven. Despite being the son of immigrants and living in a subdivision, he made friends with a neighboring farmer. Through junior high and high school, he kept some cattle on the nearby farm, fed them out and sold beef. His life has taken some turns since then, but today, VandenBerg is basically still doing that, although on a larger scale and with arguably higher quality beef, raising registered South Devon cattle on his farm near Hammond, New York and earning the title of the 2023 Seedstock Producer of the Year.

"I spent time in the military and lived in Montana for a while, went to graduate school in Maine and during some of those times I didn't have animals but I always found a farm or ranch or somewhere to hang out on," VandenBerg says. "I've got a pretty serious addiction to cattle so I always seemed to find them somewhere, no matter where I was at."

In fact, when he was stationed in Germany for two years, he would spend his leave time at his grandparent's farm in Holland, getting his "fix."

It was in the mid-1990s when VandenBerg bought a USDA inspected meat plant and he realized there were quality issues in the beef coming through the line, so when he came across a sale catalog, the South Devon breed caught his eye. He bought a bull from that catalog and had it shipped to New York from Montana.

"The first group of calves I had out of that bull were really good, I mean, really good," VandenBerg says.

For a while, VandenBerg was a lone wolf, not many people in his part of the country at that time were valuing quality over quantity when it came to beef production, but eventually as his feeder calves would go through the

VandenBerg's success with South Devon cattle in the field and on the rail has caused rising demand from other area producers.



“We’re trying to do the best job that we can do, to provide our seedstock customers with quality animals and our beef customers with quality beef, and if we can do both of those, you know, hopefully we can keep doing this for the long haul.”

Mike Vandenberg
Hammond, New York

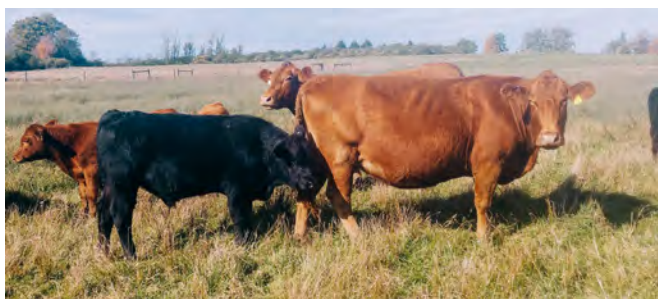


Vandenberg's experience studying beef quality in his processing plant led him to add South Devon genetics to his herd.

sale barn, they started to speak for themselves. Each year Vandenberg bought a few more registered cows and eventually, the people who used to question his business sense buying higher priced breeding stock, began to see the value in it and started asking if he had any bulls for sale.

Vandenberg was still operating his processing plant. Looking at carcasses every day helped him see what areas of beef really needed improvement. He recalls one day, butchering a high-quality Angus carcass alongside a South Devon.

"All things being equal as far as the meat quality between the two carcasses was like comparing apples to apples, but what I noticed with the South Devon was, I got three quarters of a barrel of scrap from trim and such, and with the Angus I got a barrel and a half of scrap," Vandenberg says. "When I looked at how much there was in trim to get the same product, we were getting more yield on the South Devon carcass than the Angus carcass, so that kind of pushed me to do more with the South Devon and we've had good luck with them."



Vandenberg looks for animals that will maintain or increase pounds to provide quality to his seedstock and beef customers.

The plant closed when Vandenberg, still serving in the Army Reserves, was deployed to Afghanistan from 2005 to 2007, during which time, his herd was held together by good friends in the breed, Dar and Lynn Giess and Jim and Mary Brown, who kept and cared for some of his cattle until he came home.

Today, Vandenberg tries to keep between 75 to 100 mother cows on the farm and as interest in quality beef cattle around the east coast has risen, so has demand for the top tier of his bull calves that he keeps intact and markets to the public.

"When I look at a potential bull, I look at pedigrees, I try to keep the birth weight down and I want one that phenotypically looks good, is structurally correct and stands well on its feet and legs," he says.

On the maternal side, Vandenberg looks for a moderate size, feminine cow that is structurally sound, feed efficient and he has found an advantage of South Devon cows is that they are generally easy keepers, especially in harsh New York winters.

In the end, Vandenberg's selection process revolves around an animal that will maintain or increase pounds.

"I look at all cattle as meat because you're getting paid by the pound, so the decisions that we make when it comes to purchasing either females or bulls, it's all based on what those animals are going to do pound wise because ultimately, that's the name of the game," Vandenberg says. "We're trying to do the best job that we can do, to provide our seedstock customers with quality animals and our beef customers with quality beef, and if we can do both of those, you know, hopefully we can keep doing this for the long haul." ❖

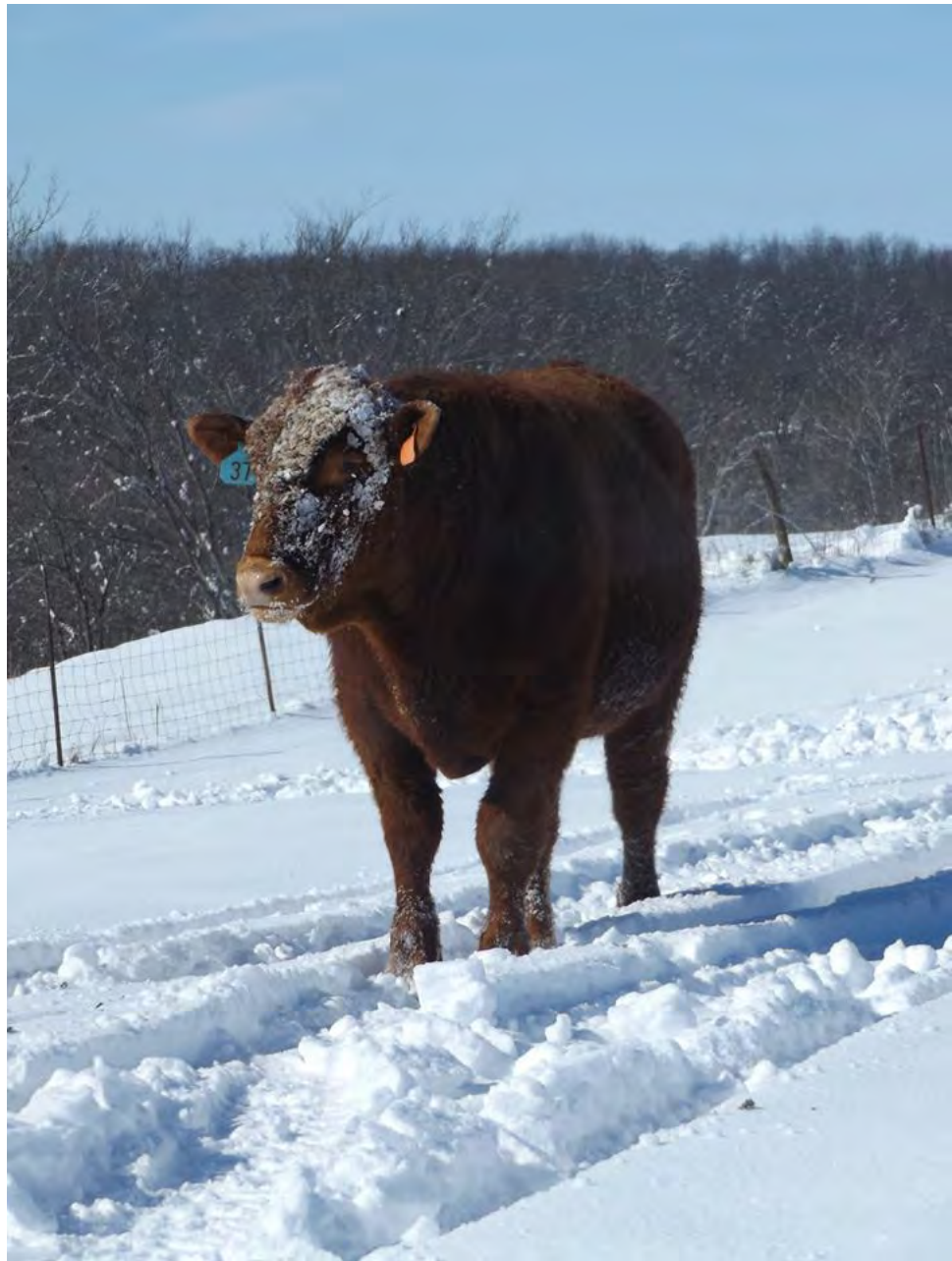
A GENOMICS BULL BUYING GUIDE

A producer's guide to selecting bulls

*By Jamie T Courter, PhD
Bovine Technical Services Manager
Neogen Genomics*

As we enter spring bull buying season it is imperative that producers arm themselves with information to make educated purchasing decisions.

As you continue to flip through various catalogs, selecting bulls as you have so many times before, I would like to take this opportunity to provide what I believe are fundamental pieces of information to better assist a producer in their bull buying decisions. In addition to the overall soundness and conformation of a bull, it is always important to select a sire that is backed by data. You wouldn't necessarily go out and buy a new pickup truck without researching its horsepower, torque, and tow-rating. Instead, you would ensure that the overall mechanics of the engine matched your daily needs. The same should be true about purchasing a new herd bull or AI sire. Instead of an owner's manual, you now have expected progeny differences (EPD).



Expected progeny differences (EPD) serve as a valuable tool to evaluate prospective bulls to meet the needs of your herd.

What is expected progeny difference (EPD) and how is it interpreted?

In addition to photographs, most catalogs included a multitude of information and numbers for a given sire. While they can be overwhelming, those numbers summarize what is currently known about the genetic potential of an animal. These values are referred to as expected progeny differences (EPD) and represent an estimate of the genetic merit an animal will pass on to its offspring.

Seedstock producers invest heavily into reporting the key information used to calculate an EPD. For traditional EPD, these include individual pedigrees, phenotypes for key traits of interest, genomics and progeny information. When an EPD is reported back to the seedstock producer the estimate of genetic merit is summarized in four different ways:

1. EXPECTED PROGENY DIFFERENCE (EPD):

The first number listed following the trait abbreviation, an EPD is an estimate of the average genetic merit an animal will pass on to its progeny. They can be used to rank animals according to their potential to make genetic change within a herd, or when making bull buying decisions. For example, if you are comparing a bull whose weaning weight EPD is +53 to another whose EPD is +63, one would expect the second bull's progeny to weigh on average ten pounds more than the first bull's. Therefore if the second bull is purchased and sires 30 progeny in a season, all other factors excluded, that should be 300 extra pounds of weaning weight expected from the second animal as compared to the first.

2. PERCENTILE RANK:

A percentile rank reports where the specific EPD for that animal ranks across the entire breed. Ranging from 1 to 100, if an individual is in the top 1%, they are one of the best animals in the database for that trait of interest. Percentile rankings are particularly useful to gain bearings as to what a "good" or "bad" EPD looks like within a breed population. Percentile rankings quickly tell the producer if the animal is above average (less than 50 percentile rank) for a trait compared to all other animals in that population. It is important to know which other animals are compared in the percentile rankings.

3. ACCURACY:

Ranging from 0 to 1, accuracy is an estimate of the confidence that the EPD provided is the "true EPD" of the animal. After all, an EPD is a geneticist's best estimate of genetic potential on an animal given the information provided to the evaluation at that time. As more progeny records and phenotypes on an animal are reported, geneticists know more about that animal. This results in the EPD fluctuating up and down over time, while accuracy increases.

4. POSSIBLE CHANGE:

Possible change is a way to interpret the amount of change likely in an EPD. When considering a young bull with low accuracy, it is important to consider the amount of change that could potentially occur as data for this specific animal enters into the genetic evaluation. Younger bulls will have a larger possible change range than older bulls with higher accuracy. As an EPD approaches an animal's true genetic value, two-thirds of the time this value would be within the possible change range, but one third of the time the "true EPD" will fall outside of this window. If you add and subtract two possible change units, you will have a window in which the "true" EPD will land 95% of the time. This doesn't mean that each animal's EPD will change by this amount, but it is the potential change that could occur to an EPD. It gives an indication of the level of risk for each trait and accuracy level.



Expected progeny differences (EPD) represent an estimate of the genetic merit an animal will pass on to its offspring.

Accuracy

Accuracies are also important to consider when selecting a bull. As previously mentioned, EPD are an estimate based on the information available to the genetic evaluation at the time. As more information is reported, be it in the form of phenotype records or DNA, that estimate can move up or down as the accuracy of the prediction increases. However, the amount of potential movement decreases as accuracy increases.

To help visualize this, Table 1 includes birth weight (BW) EPD information for two different yearling bulls. While they have the same EPD for BW (-2.7 lbs.), thus the same percentile rank in the breed (2%), the accuracy is higher for Bull A than for Bull B. This is because Bull A has been genotyped while Bull B has not. Just looking at their respective EPD, both animals would be considered “calving ease” bulls and would be purchased as such. The possible change for BW with an accuracy of .39 is 1.75 and 2.5 for the BW accuracy of .15. This means, with complete knowledge about these bulls, 2/3 of the

time Bull A’s “true EPD” will land between -4.45 and -0.95 (-2.7+/-1.75). For Bull B, 2/3 of the time his “true EPD” would land between -5.2 and -0.2 (-2.7+/-2.5). To be even more confident in the range in which the bulls’ final EPD will land, you can add and subtract two possible change units to find the window in which the “true EPD” will land 95% of the time. In other words, there is only a 5% chance the “true EPD” for the animal falls outside the range provided. Notice how much smaller the range is for Bull A compared to Bull B. When comparing the range of minimum to maximum value, by genomically testing Bull A, 3 lbs. of uncertainty were removed from the overall estimate of BW. Genomic testing helps reduce the risk to the buyer and allows them to confidently purchase a heifer bull, knowing the seedstock producer has done everything possible. Please note that Calving Ease is the best EPD to use to predict calving difficulty, not birthweight (BW).

What does this mean for a seedstock producer?

The strength of an evaluation and the benefit of genomic technology are a direct result of the investment from seedstock producer to record pedigrees, collect phenotypes and genomically test their herd. While much of this article has been geared toward purchasing bulls with genomically enhanced EPD (GE-EPD), the concepts and reasons also apply to why seedstock providers should genomically test their bulls. In addition

to powering the genetic evaluation, selling bulls with GE-EPD is a standard practice to ensure that when a young bull is sold to a commercial rancher, he has more accurate genetic predictions and therefore less risk of big movements in the EPD listed on sale day. Genomic testing increases the confidence a seedstock producer as in the bulls they are selling, as well as the confidence the commercial customer has in their purchase. ❖

TABLE 1.
The impact of accuracy on the 95% confidence interval of an expected progeny difference (EPD).

	BULL A	BULL B
EPD	-2.7	-2.7
Percentile Rank	2%	2%
Accuracy	.39	.15
Possible Change	1.75	2.5
Range of minimum to maximum “true EPD” 95% of the Time (+/- two Possible change units)	-6.2 to .8	-7.7 to 2.3

Reprinted from Sim Talk, Volume 31, Number 1, January 2023.

2023 NORTH AMERICAN
SOUTH DEVON ASSOCIATION

Youth Heifer Recipient

DALLAS HILL

Dallas Hill, Welch, Oklahoma is the 2023 recipient of the North American South Devon Association youth experience heifer, donated by 9 Mile Ranch, Kristin Dykes, Walla Walla, Washington, in memory of her husband Josh Dykes.

“Dallas is a hard-working young man with an industrious spirit. He is a self-starter and will see this project through to success, not because he is forced to, but because he wants to. Dallas will put in the time necessary, no matter what other activities are scheduled in his life, and he will be happy to work with his heifer no matter the date, weather conditions or time of day. Dallas is not afraid of hard work and he knows that success often shows up in work boots” said Dustin Wiley, Labette County High School agriculture instructor. “Dallas is appreciative of the efforts of others to help him in his journey. He has grown up raising cattle and it is truly something that he is passionate about. He has a love for cattle and pride in his heritage as a beef producer.”



Dallas Hill with his heifer at the 2023 National Western Stock Show in Denver, Colorado.



Dallas Hill accepts the award for the 2023 NASDA Youth Experience Heifer from NASDA Youth Ambassador, Ciera Steinlicht, Valley Falls, Kansas.

“In the last two years, I have purchased two South Devon bulls, seven bred heifers and a show heifer. I am building my own South Devon herd. I love cattle and have researched the South Devon breed and feel like it will be a great fit for my family’s freezer beef business. Showing this heifer at local and regional shows would help promote the breed and help me eventually sell bulls and heifers in my area of the country,” said Hill. I want to increase the South Devon numbers in Oklahoma and Kansas. ❖

“I want to be a seedstock producer with at least fifty cow-calf pairs and this program would give me that opportunity to not only build my herd faster, but also provide a way for me to promote the breed at my local and larger fairs.”

Dallas Hill
Youth Heifer Recipient
Welch, Oklahoma

2022

Iowa State Fair

DES MOINES, IOWA



Champion Bull

KNN Frank 9K

Sire: KNN Final Draft 2H – BD: 3/1/22

KNN Farms, Bay City, WI



Reserve Champion Bull

WGF Dutton

Sire: JVM Easton 750E – BD: 3/9/21

Walnut Grove Farm, Valley Falls, KS



Champion Female

KNN Katness 10H & Calf

Sire: DLCC Energizer 87E – BD: 3/26/20

KNN Farms, Bay City, WI



Reserve Champion Female

WGF Divina

Sire: WGF Hondo – BD: 6/1/21

Walnut Grove Farm, Valley Falls, KS



Champion Poundmaker Female

JVM Joslyn 110J

Sire: JVM Easton 750E – BD: 5/7/21

Emilee White, Wadena, MN



Reserve Champion Poundmaker Female

WGF Scarlet & Calf – BD: 3/2/18

Sire: WGF Chilly Pepper

Walnut Grove Farm, Valley Falls, KS



Champion Poundmaker Bull

SRA Rose's Copper Kovu

Sire: JVM Easton 750E – BD: 3/30/22

Nederhoff Cattle Company, Wellsburg, IA



Reserve Champion Poundmaker Bull

FC Kustom Made 4K

Sire: KNN Ranger BD: 3/5/22

Fick Cattle, Maiden Rock, WI

SHOWMANSHIP

PEEWEE

Champion

Oakley Yarwood
Bay City, WI

Reserve

Trice VanderMolen
Pella, IA

JUNIOR

Champion

Lane Rigdon
Mediapolis, IA

Reserve

Savannah Anderson
Wellsburg, IA

INTERMEDIATE

Champion

Ciera Steinlicht
Valley Falls, KS

Reserve

Jaelynn Smith
Sully, IA

SENIOR

Champion

Emma Gnech
Malin, OR

Reserve

Lauren Zaabel
Newton, IA



Champion Beef Herdsman

Abe & Renee Fick

Fick Cattle, Maiden Rock, WI

Thank You

IOWA STATE FAIR
JUNIOR SHOW SPONSORS

JVM Cattle Company
Zach & Amy Kitzmann
Diamond D Tags
Wehrle Trucking
White Farms
Iowa South Devon Association

2022

MN Beef Expo

ST. PAUL, MINNESOTA



Grand Champion Female

JVM Joslyn 110J

Sire: JVM Easton 750E – BD: 5/7/21

Emilee White, Wadena, MN



Reserve Champion Female

SC Emma 15K

Sire: Redhill Double Agent 139H – BD: 3/5/22

Kassey Pauling, Montevideo, MN

Bar/E Cattle Co. South Devon

2017 Seedstock Producer of the Year



Congratulations Nicole Kibler
2017 NASDA Youth Experience
Heifer Recipient of

Bar E Teddy

donated by Bar/E Cattle Co.



Heifers For Sale

Steve & Barbara Elmore

1235 W. Mt. Gilead Church Rd.

Clinton, N.C. 28328

Cell: 910-385-6200

sandbelmore@centurylink.net

HOXIE HILL FARM

Your Source for South Devon Genetics in the Northeast



BULLS AND FEMALES FOR SALE

Mike Vandenberg

55 Ward Road, Hammond, NY 13646

(315) 744-4273 • mapleallis@gmail.com

**2023 SEEDSTOCK
PRODUCER OF THE YEAR**

SERVING UP QUALITY SOUTH DEVON GENETICS *In the Pasture and On the Plate*

- Good Quality South Devon Beef
- Pasture-raised, free choice local grains
- No antibiotic or growth hormones
- Inspected by the Missouri Department of Agriculture
- Master Cutters - Ryan Hughs and Jordan Lopez



ALUMBAUGH FARMS

DR. DALE & TERESA ALUMBAUGH

545 W. Hwy 6, Trenton, Missouri 64683

(660) 358-1509 • alumbaughfarms@gmail.com

Showdown in Good Ol' Curdtown

June 29-July 2, 2022



2022 NASDJA Junior National Participants



Premier Exhibitor
Emilee White, Wadena, MN



Premier Breeder
JVM Cattle Company, Pella, IA



Champion Bred & Owned

WGF Divina

Sire: WGF Hondo – BD: 6/1/21

Ciera Steinlicht, Valley Falls, KS



Reserve Champion Bred & Owned

KNN Katness & Calf

Sire: DLCC Energizer 87E – BD: 3/26/20

Oakley Yarwood, Bay City, WI



Champion Bull

JVM King 150K

Sire: JVM Easton 750E – BD: 3/22/22

Trice VanderMolen, Pella, IA



Reserve Champion Bull

EGR Jukebox Hero

Sire: JVM Gladiator 951G

Emma Gnech, Malin, OR



Champion Poundmaker Bred & Owned

EGR Jolene 24J

Sire: EGR Beefcake – BD: 3/15/21

Emma Gnech, Malin, OR



Reserve Champion Poundmaker Bred & Owned

ELS Princess of Fury

Sire: VCR 711E Convoy 41H

Lindsey Strauch, Fairchild, WI



Champion Steer

KNN Switch 39J

Sire: DLCC Energizer 87E – BD: 5/26/21

Oakley Yarwood, Bay City, WI



Champion Poundmaker Bull

SRA Rose's Copper Kovu

Sire: JVM Easton 750E – BD: 3/30/22

Savannah Anderson, Wellsburg, IA



Champion Cow-Calf Pair

WF Deja Vu & WF Karisma 2K

Sire: MJB Midnight Rider – BD: 4/10/16

Emilee White, Wadena, MN



Reserve Champion Cow-Calf Pair

KNN Katness 10H & KNN Frank 9K

Sire: DLCC Energizer 87E – BD: 3/26/20

Oakley Yarwood, Bay City, WI



Champion Female

JVM Journey 102J

Sire: JVM Easton 750E – BD: 1/29/21

Lauren Zaabel, Kellogg, IA



Reserve Champion Female

GJG Just A Freak 12J

Sire: EGR Beefcake – BD: 2/14/21

Emma Gnech, Malin, OR



Champion Poundmaker Female

EGR Jolene 24J

Sire: EGR Beefcake – BD: 3/15/21

Emma Gnech, Malin, OR



Reserve Champion Poundmaker Female

JVM Joslyn 110J

Sire: JVM Easton 750E – BD: 5/7/21

Emilee White, Wadena, MN



PeeWee Showmanship

Champion, Oakley Yarwood

Reserve, Trice VanderMolen



Junior Showmanship

Champion, Lexie Welsh

Reserve, Allison Axness



Intermediate Showmanship

Champion, Ciera Steinlicht

Reserve, Addison Kelm



Senior Showmanship

Champion, Travis Moniz

Reserve, Emilee White



Heartland Challenge & Herdsman of the Year

Heartland Challenge winner, Emma Gnech

Herdsman, Ciera Steinlicht



2022 Junior National Show Dedication

JVM Cattle Company, Anoka, MN. Jim Sadler and Gail Johnson accept the award from NASDJA Junior President, Travis Moniz and Ambassadors, Jillian Kniep and Ciera Steinlicht.



World South Devon Tour & Conference

NOV. 14-DEC. 1

2023

*Hosted by the New Zealand
South Devon Cattle Society*

Tours include several options to choose from, including the South Island, the conference and the North Island.

A wide array of activities including a visit to the New Zealand Agricultural Show, South Devon farm visits and a multitude of special events and cultural stops are scheduled.

FOR MORE INFORMATION CONTACT
NZSDCS Breed Coordinator
Lindy Lawrence
lindy@pbbnz.com
WWW.SOUTHDEVON.CO.NZ



TRIPLE CROWN SOUTH DEVONS

Striving for Breeding Excellence Since 1989



RANDY & SHARON CAMPBELL
(573) 782-3418 | (573) 694-0179
RSCAMPBELL1984@GMAIL.COM
RUSSELLVILLE, MO.

Making the backdrop ...



YEAR AFTER YEAR

Find us on
Facebook



*Heifers, bulls
& genetics
available
private treaty*



Gino & Jacki Gnech & Family

20990 Morelock Road, Malin, OR 97632
(541) 371-0085 • jackignech@yahoo.com

Walnut Grove Farm

WG



Champion Jr. Get of Sire
2023 National Western Stock Show

3



WGF Divina
2023 National Western Stock Show
Division Winner



WGF Karen
2023 National Western Stock Show
Division Winner



WGF Walker
2023 National Western Stock Show
Reserve Division Winner

Mike, Stephanie & Ciera Steinlicht
Valley Falls, Kansas
785/224-8860

WGF Hondo
Semen for Sale

NATIONAL WESTERN STOCK SHOW
2023
Parade of Champions
DENVER, COLORADO



Champion Bull

JVM Kryptonite 251K

Sire: MMM Untouchable W810 – BD: 2/22/22

JVM Cattle Company, Pella, IA



Reserve Champion Bull

JVM Kittle 255K

Sire: MJB Dillon 689D – BD: 4/3/22

JVM Cattle Company, Pella, IA



Champion Female

GJG Just A Freak 12J

Sire: EGR Beefcake – BD: 2/14/21

Emma Gnech, Malin, OR



Reserve Champion Female

JVM Katniss 201K

Sire: JVM Easton 750E – BD: 2/28/22

Travis Moniz, Princeton, CA



Champion Poundmaker Bull

DLCC Judge 3J

Sire: DLCC Fate 56F – BD: 2/23/21

DLCC Ranch, Pierz, MN & Hayse Farms, Maryville, MO



Reserve Champion Poundmaker Bull

DLCC Kooper 56K

Sire: DLCC Fate 56F – BD: 3/16/22

DLCC Ranch, Pierz, MN



Champion Poundmaker Female

EGR Jolene 24J

Sire: EGR Beefcake – BD: 3/15/21

Emma Gnech, Malin, OR



Reserve Champion Poundmaker Female

JVM Joslyn 110J

Sire: JVM Easton 750E – BD: 5/7/21

Emilee White, Wadena, MN



Champion Junior Heifer

JVM Journey 102J

Sire: JVM Easton 750E – BD: 1/29/21

Lauren Zaabel, Kellog, IA

Sponsored by: C/N Ranch, Carroll & Carole Nelson, Big Timber, MT



Reserve Champion Junior Heifer

GJG Just A Freak 12J

Sire: EGR Beefcake – BD: 2/14/21

Emma Gnech, Malin, OR

Sponsored by: KNN Farms, Bay City, WI



Champion Poundmaker Junior Heifer

EGR Jolene 24J

Sire: EGR Beefcake – BD: 3/15/21

Emma Gnech, Malin, OR

Sponsored by: C/N Ranch, Carroll & Carole Nelson, Big Timber, MT



Reserve Champion Poundmaker Junior Heifer

ELS Princess of Fury 39K

Sire: VCR 711E Convoy 41H – BD: 4/2/22

Lindsey Strauch, Fairchild, WI

Sponsored by: MJB Ranch, Lodge Grass, MT

Special Honors

Premier Exhibitor

DLCC Ranch

Pierz, MN

Premier Breeder

JVM Cattle Company

Pella, IA

SHOWMANSHIP

SENIOR

Champion

Emma Gnech

Malin, OR

Sponsored by:

Lane & Kate Giess

Ft. Collins, CO

Reserve

Lauren Zaabel

Kellogg, IA

Sponsored by:

Jared Mumm

Commerce City, TX

JUNIOR

Champion

Hailey Maggy

Pleasanton, CA

Sponsored by:

Triple M Incorporated

Clinton, NC

Reserve

Lindsey Strauch

Fairchild, WI

Sponsored by:

Bar E Cattle

Clinton, NC



2022 GOLDEN COMB AWARD WINNER

Addison Kelm, Waseca, MN

Sponsored by:

TM Livestock, Princeton, CA

DLCC Ranch, Pierz, MN

Lane & Kate Giess, Ft. Collins, CO

Elkington Bros. & Sons, Idaho Falls, ID



Elkington

Polled Herefords & South Devon

CONTACT

Keith Elkington (Home)
208-523-2286
(Cell) 208-521-1774

Layne Elkington
(Cell) 208-681-0765

Brent Elkington (Home)
208-523-6461

Eric Elkington
(Cell) 208-881-4014

Range raised Polled Hereford and South Devon Cattle Raised at High Elevation in the Deserts of Eastern Idaho (annual precipitation 12 inches a year)

Bred to thrive on sparse feed with the need to travel for water.

We sell 25 to 30 range-raised coming two-year-old bulls on the first Friday in February every year and 5 to 10 bred heifers.


We are a short distance from Jackson Hole Wyoming and Yellowstone National Park. We invite you to come and visit if you are in the area. We will show you the cattle and take you fishing.




EBS ELKER 1121 642A

- A red South Devon bull that is moderate and thick with tremendous depth.
- We love the calves out of this bull. They are long, smooth and super thick. They are great!
- Owned with David Corker in Australia.

SAVE THE DATE
Annual Sale
February 2, 2024




**Cody, Haley, Kelsey &
Carley Zimmer**
N2701 County Road D
Bay City, WI 54723
715-590-2124
Czimmer1@gmail.com




ZIMMER
LAND & LIVESTOCK

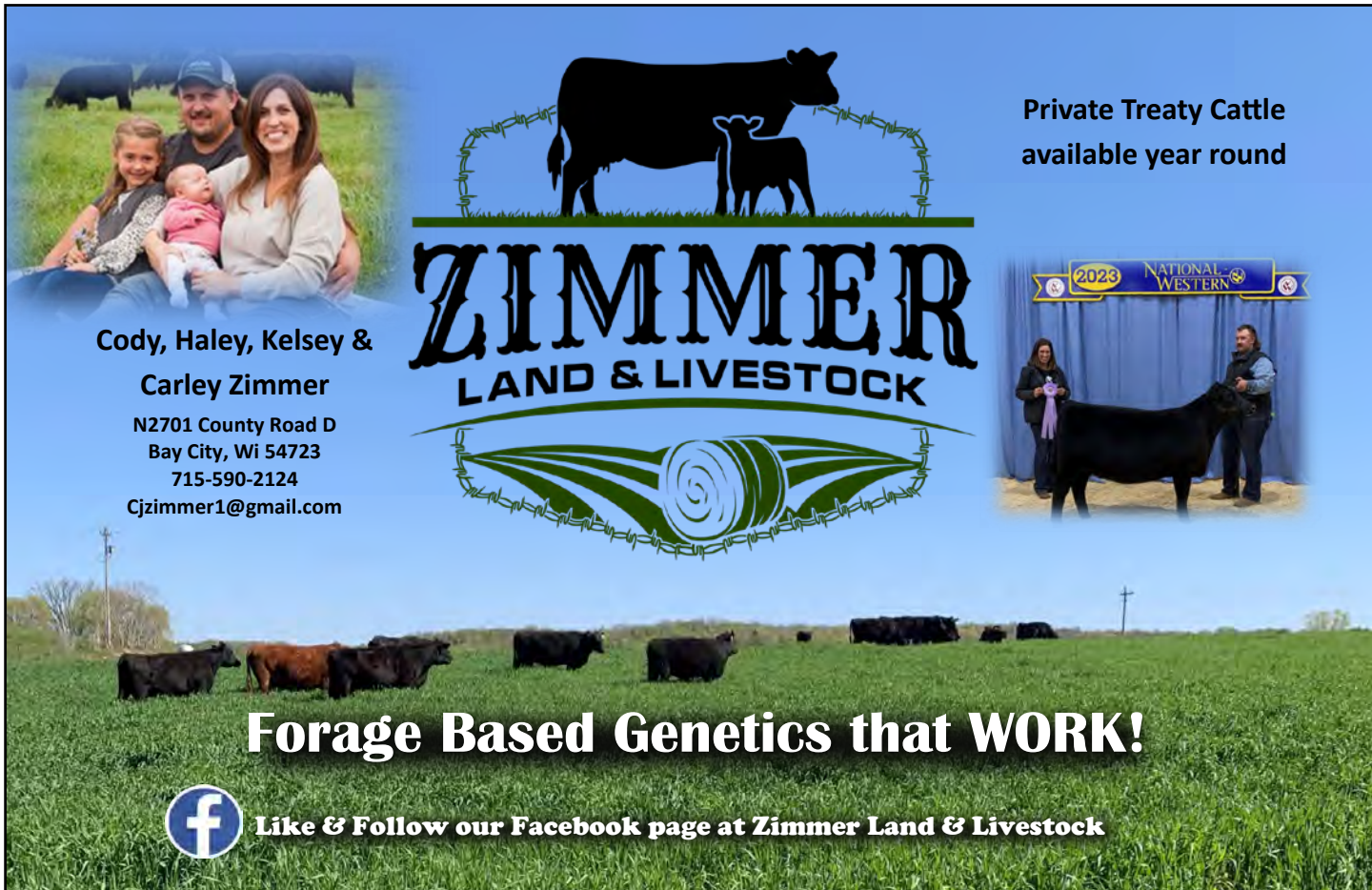
**Private Treaty Cattle
available year round**



Forage Based Genetics that WORK!



Like & Follow our Facebook page at Zimmer Land & Livestock



NORTHERN INTERNATIONAL LIVESTOCK EXPOSITION

2022

Parade of Champions

BILLINGS, MONTANA

**Champion Bull**

DLCC Judge 3J

Sire: DLCC Fate 56F – BD: 2/23/21

DLCC Ranch, Pierz, MN & Hayse Farms, Maryville, MO

**Reserve Champion Bull**

DLCC Kodiak 65K

Sire: JVM Easton 750E – BD: 3/21/22

DLCC Ranch, Pierz, MN

**Champion Female**

JVM Katniss 201K

Sire: JVM Easton 750E – BD: 2/28/22

Travis Moniz, Princeton, CA

**Reserve Champion Female**

KNN Sylvee 29J

Sire: JVM Easton 750E – BD: 4/12/21

Connor Porath, Twin Falls, ID



Champion Poundmaker Bull

JVM Kasanova 260K

Sire: JVM Easton 750E – BD: 3/20/22

JVM Cattle Company, Pella, IA



Champion Junior Bull

Konan

Sire: MD Effortless 2E – BD: 3/20/22

Mylee Porath, Twin Falls, ID



Champion Poundmaker Female

WCKRJ

Sire: JVM Easton 750E – BD: 2/2/22

Wade Kramer, Columbus, MT



Reserve Champion Poundmaker Female

DLCC Loop 24J

Sire: BUBS Southern Charm – BD: 3/4/21

DLCC Ranch, Pierz, MN



Champion Junior Heifer

JVM Jinger 101J

Sire: JVM Easton 750E – BD: 2/3/21

Travis Moniz, Princeton, CA



Reserve Champion Junior Heifer

WCKRJ

Sire: JVM Easton 750E – BD: 2/2/22

Wade Kramer, Columbus, MT

FACES & PLACES



Oakley Yarwood concentrates on the judge at the 2022 Iowa State Fair.



2022 Junior National Senior Quiz Bowl division.



2022 Junior National PeeWee Quiz Bowl division.



Lane Giess, Ft. Collins, CO accepted the W.D. Farr Scholarship at the National Cattlemen's Beef Association convention in New Orleans, LA. Pictured with his wife Kate and parents Dar and Lynn.

Send us a pic! Submit your high-resolution photos for consideration to southdevon_lynn@outlook.com.

FACES & PLACES



Marty VanderMolen, Sully, IA, one of the first members of the North American South Devon Association regaled the 50th Anniversary, 2023 NASDA banquet attendees with stories from the beginning years of the association.



Emma Gnech, Malin, OR and Alexis Casey, Midland, OR at the 50th Anniversary National South Devon Show, Denver, CO.



Junior show judge, Laddy Trehal, Ault, CO congratulates Lauren Zaabel, Kellogg, IA on her championship entry during the 2023 NWSS South Devon Junior Show.



NASDA Youth Ambassador, Ciera Steinlicht, Valley Falls, KS exhibits her heifer at the National South Devon Show in Denver.



50th Anniversary benefit auctioneer, Travis Moniz, Princeton, CA.

FACES & PLACES



Kurt and Nettie Nelson, KNN Farms, Bay City, WI were recognized by South Devon juniors for their coordination of the 2022 Junior National.



Open show judge, John Toledo, Visalia, CA compliments Travis Moniz, Princeton, CA on his National Reserve Champion Female at the 50th Anniversary show in Denver, CO.



Hailey Maggy, Pleasanton, CA wins the 2023 Junior Showmanship championship at the NWSS South Devon Junior Show.



Blaine Wilson, Flying Diamond Ranch, Lakeside, NE, past NASDA board member and Dar Giess, NASDA president connect at the National Cattlemen's Beef Association convention in New Orleans.



Connor Porath, Twin Falls, ID exhibits his NASDA Youth Experience heifer at the 2022 Northern International Livestock Exposition (NILE) in Billings, MT.



Paige Nelson Owen, Bay City, WI exhibited the Champion South Devon Female for KNN Farms at the 2022 Iowa State Fair.

TLC

Thompson Land & Cattle

SELLING BULLS OUT OF PROVEN MATERNAL SIRE

Registered Purebred South
Devon and Angus/Red Angus
South Devon Poundmakers

35 Bulls Currently on Test
Videos Available in April
Delivery Available Mid-May
Yearling Heifers for Sale



*Bulls of this
caliber available*



You can find it all at Thompson Land & Cattle

THOMPSON LAND & CATTLE

6629 100th Street SW, Motley, MN 56466

Jace (801) 391-8989 • Email thebrick25@gmail.com

www.thompsoncattle.com • Females and Semen for Sale Private Treaty

South Devon Angus crosses that work for the beef industry!

ALSO SELLING FALL YEARLING BULLS AT THE MIDLAND BULL TEST

California**TM LIVESTOCK**

BRIAN, JO & TRAVIS MONIZ
6990 NORMAN ROAD
PRINCETON, CA 95970
OUTLAWRODEO@GMAIL.COM

ZOMBIEWOLF CATTLE COMPANY

STEPHEN KING
13010 COUNTY ROAD 60
ALTURAS, CA 96101
530-223-4444
MUCSHARK8@MSN.COM

Colorado**DOUBLE RL CATTLE COMPANY**

5180 HIGHWAY 62
RIDGWAY, CO 81432
970-626-5485
LAURA@RRLRANCH.COM
HERD PREFIX: DRL

DEBBIE GRAY

14499 RAPID CREEK ROAD
HOTCHKISS, CO 81419-9438
970-872-9373
HERD PREFIX: DBM

LANE & KATE GIESS

324 E FOOTHILLS PARKWAY, APT. 208
FORT COLLINS, CO 80525
320-293-1647
HERD PREFIX: DLCC

Georgia**BAR R CATTLE COMPANY**

ALICIA RIGDON
2900 TIG KNIGHT ROAD
LOGANVILLE, GA 30052
HERD PREFIX: RIGD

Idaho**ELKINGTON BROS & SONS**

KEITH ELKINGTON
5080 EAST SUNNYSIDE RD
IDAHO FALLS, ID 83406
208-523-2286
EPHRBULLS@HOTMAIL.COM
HERD PREFIX: EBS

MARVIN AND DENISE MUMM

3620 N 3300 E
KIMBERLY, ID 83341
208-308-5058
DENISEMUMM@GMAIL.COM
HERD PREFIX: MD

Iowa**G & S SOUTH DEVONS**

GARY MILLER
63777 GALVESTON ROAD
ATLANTIC, IA 50022
712-243-5098
HERD PREFIX: GS

GEM SOUTH DEVONS

DR. BARBARA HARRE
13150 106 AVE
DAVENPORT, IA 52804
563-381-2294
BHARRE@AOL.COM
HERD PREFIX: GEM

HILL CREST SOUTH DEVONS

SHARON & SHAWN VAN WYK
401 460TH AVE
GRINNELL, IA 50112
641-593-6674
VANWYKWOODBOLD@IOWATELECOM.NET
HERD PREFIX: EVW

JVM CATTLE COMPANY

JORDAN & TAYLER VANDER MOLEN
1186 133RD STREET
PELLA, IA 50219
641-521-9917
JORDANJVM@GMAIL.COM
HERD PREFIX: JVM

KUNTZ & SONS

4082 170TH STREET
BROOKLYN, IA 52211
641-522-7179
HERD PREFIX: SLF

MAR-BET FARM

MARTY & BETTY VANDER MOLEN
1186 133RD STREET
PELLA, IA 50219
641-594-4280
MARBET@NETINS.NET

NEDERHOFF CATTLE COMPANY

AUSTIN & VICTORIA NEDERHOFF
710 MONROE STREET
WELLSBURG, IA 50680
NEDERHOFFCATTLECOMPANY@GMAIL.COM

NICHOLS FARMS LTD

DAVE NICHOLS
2188 CLAY AVE
BRIDGEWATER, IA 50837
641-369-2829
NICHOLS@NICHOLSFARMS.BIZ
HERD PREFIX: DS

LEVI WOIWOOD

1685 PALM AVE
GARNER, IA 50438
641-587-2186
HERD PREFIX: LLW

Kansas**SHOWBOAT CATTLE COMPANY**

CHARLES TERRY
13266 WELLMAN RD
WINCHESTER, KS 66097-9718
785-224-9565
BOAT@SHOWBOATCO.COM
HERD PREFIX: SBCC

WALNUT GROVE FARM

MIKE & STEPHANIE STEINLICHT
16764 NORTH CEDAR ROAD
VALLEY FALLS, KS 66088
785-224-8860
GARRETTANDCO2000@YAHOO.COM
HERD PREFIX: WGF

Kentucky**WINDY CREEK FARMS**

MARK HAYNES
317 FOX CHASE DRIVE
ELIZABETHTOWN, KY 42701
270-769-1383
MARK@GOLDSTARREALTYKY.COM
HERD PREFIX: KSP

Massachusetts**THE KOEBKE FAMILY**

JIM & KRISANNE KOEBKE
33 KOEBKE ROAD
DUDLEY, MA 01571
508-949-2043
AMERADAHOLSTEINS@CHARTER.NET
HERD PREFIX: JKK

Minnesota**DLCC RANCH**

DAR & LYNN GIESS
33424 183RD STREET
PIERZ, MN 56364
320-249-2130
DLCCRANCH@OUTLOOK.COM
HERD PREFIX: DLCC

MITCHELL FRANK

14347-210TH STREET
MILACA, MN 56353
320-282-3546
CJMBFRANK@FRONTIERNET.NET
HERD PREFIX: JCF

LEAH GIESS

33424 183RD STREET
PIERZ, MN 56364
HERD PREFIX: DLCC

DLCC WHIPLASH SYNDICATE

LYNN GIESS
33424 183RD STREET
PIERZ, MN 56364
DLCCRANCH@OUTLOOK.COM

2023 MEMBERSHIP DIRECTORY

J2 FARMS

AMANDA JOHNSON
41639 JIVARO STREET NW
OGILVIE, MN 56358
AMJOHN816@GMAIL.COM

J BOONE HAWLEY

33424 183RD STREET
PIERZ, MN 56364

JC FARM

JASON FRANK
14347-210TH STREET
MILACA, MN 56353
320-282-3546
CJMBFRANK@FRONTIERNET.NET
HERD PREFIX: JCF

MAPLE RIDGE FARM

MATTHIAS J NOVAK
8155 380TH AVE
HILLMAN, MN 56338
320-355-2129
NOVAKFARMS@ICLOUD.COM
HERD PREFIX: MRF

AARON MILLER

2299 140TH STREET
SWANVILLE, MN 56382
320-360-1152
MILLERJ95@YAHOO.COM
HERD PREFIX: AJR

JOEL POPKEN

33360 220TH STREET
SWANVILLE, MN 56382
320-547-2202
JPOPKEN@WISPER-WIRELESS.COM
HERD PREFIX: JP

R P FARMS

ROBERT POPKEN
33360 220TH STREET
SWANVILLE, MN 56382
320-547-2202
HERD PREFIX: RP

SADLER CATTLE COMPANY

GAIL JOHNSON & JIM SADLER
21140 SAINT FRANCIS BLVD
ANOKA, MN 55303
612-581-8706
GAIL_JOHNSON@YAHOO.COM
HERD PREFIX: SCC

THOMPSON LAND & CATTLE COMPANY

JACE & VEARL THOMPSON
6629 100 STREET SW
MOTLEY, MN 56466
801-391-8989
THEBRICK25@GMAIL.COM
HERD PREFIX: TLC

TWO STEP SYNDICATE

33424 183RD STREET
PIERZ, MN 56364
320-249-2130

WARPAINT RANCH

JOHN SCHMITZ
16450 117TH AVENUE 10
MAPLE GROVE, MN 55369
JPSCHMITZ1961@AOL.COM

WHISPERING SPRUCE FARM

TRAVIS & CONNIE SCHLOSSER
16312 CR #3 NE
MILTONA, MN 56364
218-943-4318
TRAVISCONNIE@MIDWESTINFO.NET
HERD PREFIX: WS

Missouri

ALUMBAUGH FARMS

DALE V AND TERESA M ALUMBAUGH
193 SW 52ND AVE
TRENTON, MO 64683
660-359-7808
FARMER6TH@LIVE.COM
HERD PREFIX: DA

BILLIE G CULP

20532 QUAIL ROAD
NEOSHO, MO 64850
417-628-3847
BGCULP@LERU.NET
HERD PREFIX: BGC

DIAMOND S DEVONS

PATRICK & MYRA SWYERS
33 COUNTRY ROAD 4055
SALEM, MO 65560
573-739-1161
SWYERSM@HOTMAIL.COM
HERD PREFIX: DSD

TRIPLE CROWN SOUTH DEVON FARM

RANDALL J CAMPBELL
4114 STATE RT U
RUSSELLVILLE, MO 65074
573-782-3418
RSCAMPBELL1984@GMAIL.COM
HERD PREFIX: TC

Montana

BIG COUNTRY BEEF GENETICS

LEO MCDONNELL & JIM BROWN
BOX 259
LODGE GRASS, MT 59050
406-639-2569
AMSALERS@AOL.COM
HERD PREFIX: BC

LEO MCDONNELL JR

W-2 RANCH
13 BULL DRIVE
COLUMBUS, MT 59019
406-433-5597
HERD PREFIX: LM

MJB RANCH

JIM & MARY BROWN
BOX 259
LODGE GRASS, MT 59050
406-639-2569
AMSALERS@AOL.COM
HERD PREFIX: MJB

MIDLAND BULL TEST

5 BULL DRIVE
COLUMBUS, MT 59019
406-322-5597
BULLS@MIDLANDBULLTEST.COM

CARROLL & CAROLE NELSON

150 HOWIE ROAD
BIG TIMBER, MT 59011
406-690-8731
CNELSON@MIDRIVERS.COM
HERD PREFIX: CCN

Nebraska

WILSON RANCH

BLAINE G WILSON
2676 213TH TRAIL
LAKESIDE, NE 69351
308-762-6026
BWLSRANCH@GMAIL.COM
HERD PREFIX: BW

New York

FISH CREEK FARM

JORDAN MACAULAY
10922 HOXIE ROAD
WEST EDMESTON, NY 13485
HERD PREFIX: FCF

GREEN ACRES ANGUS

RICHARD PEEBLES
36412 VAN BROOKLIN ROAD
CHARTHAGE, NY 13619
RPEEBLES1966@GMAIL.COM

HOXIE HILL FARM

MIKE VANDENBERG
55 WARD ROAD
HAMMOND, NY 13646
315-744-4273
HERD PREFIX: HHH

North Carolina

BAR/E CATTLE COMPANY
D STEPHEN ELMORE
1235 W MT GILEAD CH ROAD
CLINTON, NC 28328
910-385-6200
SANDBELMORE@CENTURYLINK.NET
HERD PREFIX: DSE

North Dakota

DAHL LAND & CATTLE CO
JEFF DAHL
6442 55TH AVE SE
GACKLE, ND 58442
701-485-3206
JLDAHL@DAKTEL.COM
HERD PREFIX: DLC

DIAMOND PLUS CATTLE
ROGER & DAVID PRESLER
6161 56TH AVE SE
GACKLE, ND 58442
701-485-3505
DAKOTADPC@DAKTEL.COM
HERD PREFIX: DPC

JALLO STOCK FARM
WAYNE & NATHAN JALLO
12253 55TH ST NE
FORDVILLE, ND 58231
701-384-6153
WJALLO@POLARCOMM.COM
HERD PREFIX: JSF

JOHN KUCHERA
15350 COUNTY ROAD 10
WYNDMERE, ND 58081
701-439-2152
JKUCHERA@RRT.NET
HERD PREFIX: KL

Oklahoma

BOLLENBACH CATTLE COMPANY
A SCOTT BOLLENBACH
RR 1 BOX 5-A
KINGFISHER, OK 73750
405-375-5440
SCOTTBOLLENBACH@PLDI.NET
HERD PREFIX: SB

Oregon

GNECH FARMS
20990 MORELOCK ROAD
MALIN, OR 97632
541-371-0085
JACKIGNECH@YAHOO.COM
HERD PREFIX: GJG

South Dakota

GOLDHORN FARM
DONALD GOLDHORN
45454 183RD STREET
CASTLEWOOD, SD 57223
605-237-6277
DGOLDHORN@YAHOO.COM
HERD PREFIX: GF

Texas

MIKE & CONNIE MALLET
10602 N HWY 281
LAMPASAS, TX 76550
512-556-1021
MMCMALLET@OUTLOOK.COM
HERD PREFIX: MOM

JARED MUMM
1717 DIVISION STREET
COMMERCE, TX 75428
JARED.MUMM@YAHOO.COM
HERD PREFIX: SIG

Vermont

CIOFFI CATTLE COMPANY
KYLE CIOFFI
31 CLYDE ALLEN DRIVE
ST. ALBANS, VT 05478
802-935-5781
KLCIOFFI@YAHOO.COM

Washington

X-E STOCK RANCH
LEE & CONNIE ENGELHARDT
8354 RD 16 NE
MOSES LAKE, WA 98837
509-766-0161
XESOUTHDEVON@ADESSAOFFICE.COM
HERD PREFIX: XE

Wisconsin

LANCE A BRANTNER
N4524 710TH ST
ELLSWORTH, WI 54011
651-214-9918
HERD PREFIX: LAB

ABE & RENEE FICK
W2331 70TH AVE
MAIDEN ROCK, WI 54750
715-495-1956
AFCATTLEI@YAHOO.COM
HERD PREFIX: FC

HIDDEN PARADISE RANCH
DEVIN HADORN-PAPKE
S8020 HILLVIEW ROAD
EAU CLAIRE, WI 54701
715-271-5018
HPCATTLE.COM
DEVIN@JOHNSONLITHO.COM

KNN FARMS

KURT & NETTIE NELSON
W5137 290TH AVENUE
BAY CITY, WI 54723
715-594-3805
KNNFARMSWI@GMAIL.COM
HERD PREFIX: KNN

VALLEY HILL FARM

TODD LEONARD
N4524 710 STREET
ELLSWORTH, WI 54011
715-273-4520
TDLEONARD@LIVE.COM
HERD PREFIX: VHF

ZIMMER LAND & LIVESTOCK

CODY ZIMMER
N2701 COUNTY ROAD D
BAY CITY, WI 54723
705-307-2216
HERD PREFIX: ZLL

Wyoming

NORTH AMER SOUTH DEVON ASSOC
PO BOX 850
BIG HORN, WY 82833
303-770-3130
INFO@SOUTHDEVON.COM
WWW.SOUTHDEVON.COM

WYOMING SOUTH DEVONS
PO BOX 72
MANVILLE, WY 82227

International

DIAMOND M SOUTH DEVON
ELSIE BEDDOES
BOX 389
DUCHESS AB CANADA T0J 020
403-566-2467
DMRRANCHING@GMAIL.COM
HERD PREFIX: DMS

SAMPSON MCGREGOR STOCK FARM
RALPH MCGREGOR & B G SAMPSON
GENERAL DELIVERY
IRON RIVER AB CANADA T0A2A0
780-826-7077
SMS@XPLORNET.COM
HERD PREFIX: SMS

MISSOURI COTEAU CATTLE COMPANY
GARY JONES
BOX 38
CRANE VALLEY, SK, CANADA, S0H 1B0
306-631-6274
JONESRANCH@LIVE.CA

LAMPASAS ★ TEXAS

Mallett South Devons
& Poundmakers



*Mallett
Red River*

South Devon x Simmental
selling at DLCC Ranch
4/15/23

Mike & Connie • mmmallett@outlook.com • 512-556-1021

Valley Hill
FARM



**Semen Available on
FC Renegade 5G**

FOR MORE INFORMATION CONTACT

Valley Hill Farm
Todd Leonard
715-338-1382

LAB Livestock
Lance A Brantner
651-214-9918

tdleonard@live.com • Ellsworth, Wisconsin

**Semen, Bulls,
Bred and Open
Females for Sale**



 **POPKEN**
SOUTH DEVON

*Looking Towards
the Future*

You can view or purchase our
quality South Devon Genetics at the
National Show and Private Treaty.

**2023 Calves Sired By DLCC Gold Medal
104G and Nichols Black JAC DSH024**

Joel or Robert Popken
33360 220th Street • Swanville, MN 56382
(320) 547-2202 • jpopken@wisper-wireless.com

2022 HALLMARK DAMS

The North American South Devon Association in continuing efforts to stress performance and productivity, recognizes the superior females of the breed, the Hallmark Dams. To identify these cows, emphasis was placed on early puberty, breeding, early calving and superior production over time. A Hallmark Dam is the standard by which all South Devon cows can be judged.

Hallmark Dams Criteria

1. Dams must have weaned a calf born since January 1, 2022.
2. Dams must be at least 50 percent South Devon and have had a minimum of three calves.
3. The maximum age for a dam to have had her first calf is 30 months of age.
4. A maximum calving interval of 395 days.
5. Every calf produced must have weaning records submitted.
6. A progeny average 205-day adjusted weaning weight ratio of at least 105.

The following list recognizes 45 South Devon cows bred and owned by 9 South Devon breeders. The first table lists each individual Hallmark Dam and her current owner and the second table lists all breeders of these Hallmark Dams. The table on page 46 shows the 33 sires of these distinguished dams. Once a dam reaches this status she will continue to be recorded in the database as a Hallmark Dam.

Owner Dam's Name	No. Calves	Avg. 205-Ratio	Calving Interval	Owner Dam's Name	No. Calves	Avg. 205-Ratio	Calving Interval
BIG COUNTRY BEEF GENETICS, LODGE GRASS, MT				KNN FARMS, BAY CITY, WI			
BC ROYALTY 4702B (Fullblood)	7	106.7	379	KNN IKEA 3F (Fullblood)	3	108	372
DAHL LAND & CATTLE CO, GACKLE, ND				KNN KIA RIO 9F (Fullblood)	3	110	369
DLC MISS SHILO 835 (Fullblood)	3	106	371	MJB RANCH, LODGE GRASS, MT			
DLC MS CROSSFIRE 819 (Fullblood)	3	106.3	373	MJB CALICO 6526D (1/2 Blood)	5	105.2	387
DLC MS ROMEO 745 (Fullblood)	4	105	370	MJB SHEALAN 2534Z (7/8 Blood)	9	106.7	370
DLC MISS SHILO 692 (Fullblood)	5	106	371	NICHOLS FARMS LTD, BRIDGEWATER, IA			
DLC MR ROMEO 436 (Purebred)	7	108.4	361	NFL LULA DSE015 (3/4 Blood)	4	105	361
DLC MS HUDSON 494 (Purebred)	7	105.7	371	NFL PERFECTION DSE063 (Fullblood)	4	105	360
DLC SHILO LASS 305 (Fullblood)	8	105	359	NFL BLACKBIRD DSC003 (1/2 Blood)	6	109.5	374
DLCC RANCH, PIERZ, MN				JOEL POPKEN, SWANVILLE, MN			
DLCC GEMMA 36F (1/2 Blood)	3	119.3	365	JP FOXTROT 82F (Fullblood)	3	109.3	375
DLCC MANDI 76F (Fullblood)	3	108.7	355	R P FARMS, SWANVILLE, MN			
DLCC BELMONT 49E (Purebred)	4	110	359	RP FLINT 02F (3/4 Blood)	3	111.3	381
DLCC CONTESSA 82E (1/2 Blood)	4	116.8	376	RP72E (Fullblood)	4	105.8	370
DLCC ELITA 16E (1/2 Blood)	4	111	356	TRIPLE CROWN SOUTH DEVON FARM, RUSSELLVILLE, MO			
DLCC ELSIE 25E (1/2 Blood)	4	114.3	378	TC DARLIN' 634D (Fullblood)	5	109.8	369
DLCC EMMA LEE 32E (Fullblood)	4	109	376	TC CAMPBELL 523C (Fullblood)	6	106.7	367
DLCC EVITA 20E (Fullblood)	4	113.5	368	TC BARBIE 430B (Fullblood)	7	137.1	367
CCN MONTANA DESTINY DI08 (1/2 Blood)	5	106.2	369	CIMARRON CLIMAX 302A (Fullblood)	8	105.5	365
DLCC BISCUIT 18D (Fullblood)	5	105	376	TC APACHE (Fullblood)	8	105	363
DLCC DORY 100D (1/2 Blood)	5	110.8	369	CIMARRON SPLENDOR 241Z (Fullblood)	9	105.8	373
DLCC LOOP 72D (Fullblood)	5	111.4	370	TC ZONE (Fullblood)	9	105.3	369
DLCC ROSE 69D (Fullblood)	5	115	369	CIMARRON SULTRESS 152Y (Fullblood)	10	105.2	364
DLCC SYDNEY 73D (Fullblood)	5	106.8	367	TC YEARN (Fullblood)	10	110.2	367
DLCC LOOP 19B (Fullblood)	7	105.9	364	TC YES (Fullblood)	10	108.7	372
DLCC SIERRA 92Y (Fullblood)	10	112.2	366				
DLCC WILMA 154W (Purebred)	11	105.7	371				

2022 HALLMARK BREEDERS

BIG COUNTRY BEEF GENETICS, LODGE GRASS, MT	1	NICHOLS FARMS LTD, BRIDGEWATER, IA	3
DAHL LAND & CATTLE CO, GACKLE, ND.....	7	JOEL POPKEN, SWANVILLE, MN	1
DLCC RANCH, PIERZ, MN	17	R P FARMS, SWANVILLE, MN	2
KNN FARMS, BAY CITY, WI.....	2	TRIPLE CROWN SOUTH DEVON FARM, RUSSELLVILLE, MO	10
MJB RANCH, LODGE GRASS, MT	2		

2022 HALLMARK SIRES

Sire's Name	Reg. Number	Percentage	No. Dams	Sire's Name	Reg. Number	Percentage	No. Dams
CIMARRON REBEL 738T	192356	(Purebred)	3	DLCC BATTLECRY 27B	206340	(Fullblood)	1
DLCC DODGE CITY 78Y	200720	(Purebred)	3	DLCC CHECKERS 12C	208860	(Fullblood)	1
MMM UNTOUCHABLE W810	199405	(Purebred)	3	DLCC COPY CAT 69C	208807	(Fullblood)	1
DLC SHILO LAD 1100	200083	(Fullblood)	2	DLCC CROSSFIRE 67C	208406	(Fullblood)	1
DLCC BELMONT 25B	206413	(Fullblood)	2	DLCC HUDSON 82U	193574	(7/8 Blood)	1
DLCC TWO STEP 84B	205508	(Purebred)	2	DLCC OPEN RANGE 3R	186509	(7/8 Blood)	1
LCOC TRINITY JO64B	210338	(3/4 Blood)	2	DLCC WHIPLASH 1Y	199722	(Purebred)	1
MJB ROMEO 337Z	201824	(Purebred)	2	DLCC YOSEMITE 44A	204577	(3/4 Blood)	1
TC XPLOSION	198811	(Fullblood)	2	GUM HILL RED 530	208776	(Fullblood)	1
BC PROGRESS 315U	194458	(Fullblood)	1	KNN MIDWEST 20D	210364	(Purebred)	1
CIMARRON BOLD OKIE 20X	200992	(Fullblood)	1	LEACHMAN ACCELERATE X166D	213673	(3/4 Blood)	1
CIMARRON CASSANOVA 23X	201045	(Fullblood)	1	MJB SHUR LOC 106S	188977	(Fullblood)	1
CIMARRON FOREMOST 320A	204509	(Fullblood)	1	NFL UNTOUCHABLE DSC042	208337	(Fullblood)	1
CIMARRON REBEL 944W	198898	(Purebred)	1	NICHOLS MAJESTIC Y808	203588	(Fullblood)	1
CIMARRON TRIUMPH 705T	192390	(Fullblood)	1	TC YADIER	200213	(Fullblood)	1
DLC MR SHILO 496	206719	(Fullblood)	1	X-E DEPUTY D908	211556	(Fullblood)	1
DLC ROYAL LAD 1139	200031	(Fullblood)	1				

PERCENTILE CHARTS

ALL SIRES

	CED	BW	WW	YW	Milk	MWW	CEM	REA	MARB	FAT	CWT	DOC	STAY
5%	15.6	-2.8	73	113	27	57	9.3	0.62	0.5	0.03	37.4	15	20
10%	13.8	-2.2	67	101	24	52	7.6	0.48	0.4	0.01	24.6	14	18
15%	13.2	-1.5	63	93	22	50	6.8	0.43	0.3	-0.01	18.2	13	17
20%	12.5	-0.9	61	87	22	47	6.5	0.39	0.2	-0.02	14.5	12	16
25%	11.9	-0.3	57	82	20	46	6.1	0.35	0.1	-0.04	10.4	11	15
30%	11.4	0.2	55	78	19	44	5.6	0.35	0	-0.06	3.7	11	15
35%	10.9	0.7	53	73	19	43	5.0	0.33	-0.1	-0.08	0.4	10	14
40%	10.4	1.1	50	69	18	41	4.4	0.31	-0.2	-0.09	-6.0	10	13
45%	9.9	1.5	48	65	17	40	3.9	0.30	-0.2	-0.10	-10.9	10	13
50%	9.4	1.6	46	61	16	40	3.3	0.29	-0.2	-0.10	-14.0	9	12
55%	8.9	1.9	44	57	16	39	2.9	0.29	-0.3	-0.10	-16.4	9	11
60%	8.4	2.3	41	53	16	37	2.7	0.27	-0.3	-0.11	-18.3	9	10
65%	7.9	2.6	39	50	15	36	2.1	0.26	-0.3	-0.11	-19.8	8	9
70%	7.7	3.0	37	46	14	35	1.6	0.23	-0.3	-0.11	-21.1	8	8
75%	7.2	3.3	36	44	13	34	1.1	0.20	-0.3	-0.11	-21.8	7	7
80%	6.6	3.8	35	42	12	32	0.4	0.15	-0.3	-0.11	-22.8	7	5
85%	5.8	4.2	33	39	10	31	-0.3	0.08	-0.3	-0.11	-23.9	6	5
90%	4.8	4.9	30	33	9	28	-1.2	0.02	-0.3	-0.12	-25.0	6	4
95%	3.3	5.9	23	22	6	26	-2.6	-0.1	-0.4	-0.12	-26.9	5	4

PERCENTILE CHARTS

ALL DAMS

	CED	BW	WW	YW	Milk	MWW	CEM	REA	MARB	FAT	CWT	DOC	STAY
5%	13.9	-1.9	67	98	26	54	7.7	0.50	0.3	0	23.1	14	19
10%	13.0	-1.3	62	90	23	50	6.8	0.44	0.2	-0.03	15.1	12	18
15%	12.4	-0.7	59	84	22	48	6.4	0.40	0.1	-0.05	10.9	11	17
20%	12.0	-0.2	56	79	21	46	6.0	0.37	0	-0.06	4.9	11	16
25%	11.6	0.1	54	75	20	44	5.5	0.35	0	-0.07	0.5	10	15
30%	11.2	0.5	52	71	19	43	5.0	0.34	-0.1	-0.08	-3.4	10	14
35%	10.7	0.8	50	68	18	42	4.6	0.33	-0.1	-0.09	-6.4	10	13
40%	10.3	1.1	48	64	18	40	4.1	0.32	-0.2	-0.09	-9.4	9	13
45%	9.9	1.4	46	61	17	39	3.7	0.31	-0.2	-0.09	-11.9	9	12
50%	9.5	1.7	44	58	16	38	3.2	0.30	-0.2	-0.10	-13.8	9	11
55%	9.1	2.0	42	55	16	37	2.8	0.29	-0.2	-0.10	-15.6	8	11
60%	8.7	2.3	40	52	15	36	2.4	0.28	-0.3	-0.10	-17.2	8	10
65%	8.3	2.6	39	49	14	35	2.0	0.27	-0.3	-0.11	-18.6	8	9
70%	7.8	2.9	37	46	13	34	1.5	0.25	-0.3	-0.11	-19.8	7	8
75%	7.3	3.2	36	43	12	33	1.0	0.24	-0.3	-0.11	-21.0	7	7
80%	6.8	3.6	34	41	11	31	0.5	0.22	-0.3	-0.11	-22.0	7	6
85%	6.1	4.0	32	38	10	30	-0.2	0.19	-0.3	-0.11	-23.1	6	4
90%	5.3	4.6	30	34	8	28	-1.1	0.14	-0.3	-0.11	-24.3	6	4
95%	3.9	5.5	27	29	6	25	-2.5	0.05	-0.3	-0.12	-26.1	5	4

NON-PARENT

	CED	BW	WW	YW	Milk	MWW	CEM	REA	MARB	FAT	CWT	DOC	STAY
5%	14.2	-1.8	82	124	23	60	7.2	0.64	0.4	-0.02	27.4	16	20
10%	13.3	-1.2	76	117	22	57	6.5	0.57	0.3	-0.04	19.7	15	19
15%	12.5	-0.8	73	111	21	55	6.0	0.53	0.2	-0.04	16.2	14	18
20%	12.1	-0.5	71	108	20	54	5.5	0.50	0.1	-0.05	13.5	13	18
25%	11.6	-0.3	69	104	20	53	5.1	0.47	0.1	-0.06	11.0	13	18
30%	11.2	0	67	102	19	52	4.8	0.45	0.1	-0.06	9.1	13	17
35%	10.9	0.2	66	99	19	51	4.4	0.43	0	-0.06	6.7	12	17
40%	10.6	0.4	65	97	18	50	4.1	0.41	0	-0.07	4.8	12	17
45%	10.4	0.6	64	95	17	49	3.9	0.39	0	-0.07	2.8	12	16
50%	10.1	0.7	63	93	17	48	3.6	0.38	-0.1	-0.08	0.5	11	16
55%	9.8	0.9	62	92	16	47	3.2	0.36	-0.1	-0.08	-1.7	11	16
60%	9.5	1.1	61	90	16	47	2.9	0.34	-0.1	-0.08	-3.6	11	15
65%	9.2	1.4	60	88	15	46	2.6	0.31	-0.2	-0.09	-5.5	11	15
70%	8.9	1.6	59	86	14	45	2.3	0.28	-0.2	-0.09	-7.9	11	15
75%	8.6	1.8	58	83	14	44	1.9	0.26	-0.2	-0.09	-10.3	10	14
80%	8.2	2.1	56	81	13	43	1.5	0.23	-0.2	-0.09	-12.4	10	14
85%	7.6	2.3	55	78	12	41	1.1	0.20	-0.3	-0.10	-14.7	10	13
90%	7.1	2.7	52	74	11	40	0.5	0.15	-0.3	-0.10	-17.5	9	12
95%	6.2	3.3	49	67	9	37	-0.3	0.09	-0.3	-0.11	-21.4	8	11

2023 SIRE SUMMARY - MAIN LISTING

Name	Reg#	DOB	%	#Herds	CED	BW	WW	YW	Milk	MWW	CEM	Marb	CW	Fat	REA	
	Color	H/P/S		#Dcalves	Acc	Acc	Acc	Acc	Acc		Acc	Acc	Acc	Acc	Acc	
	Breeder			Sire			Owner(s)	Dam								
BC PROGRESS 315U				18	5.5	1.4	77	133	21	59	4.5	-0.1	3.8	-0.12	0.49	
194458	1/28/08	FB	261	0.67	0.84	0.81	0.79	0.69			0.58	0.68	0.69	0.60	0.67	
BLK	POLLED		MJB ROMEO 125R				BC SASSY 6714S									
BIG COUNTRY BEEF GENETICS LODGE GRASS MT								TRIPLE M INCORPORATED CLINTON NC; BIG COUNTRY BEEF GENETICS LODGE GRASS MT								
BGC P2E				1	11.2	2.2	68	91	15	49	3.3	0	-13.1	-0.11	0.39	
212550	2/27/17	PB		0.44	0.52	0.48	0.47	0.17			0.17	0.26	0.36	0.23	0.33	
RED	POLLED		TLC DEETZ 9012				BGC SIB									
BILLIE G CULP NEOSHO MO								BILLIE G CULP NEOSHO MO								
CIMARRON AVENGER 135Y				5	5.2	3.2	69	101	12	47	-4.3	-0.4	-8.3	-0.09	0.33	
203209	3/9/11	FB	53	0.34	0.76	0.71	0.71	0.44			0.37	0.24	0.39	0.17	0.31	
RED	POLLED		CIMARRON CARUSO 923W				CIMARRON SAVANAH 538R									
BOLLENBACH CATTLE COMPANY KINGFISHER OK								MJB RANCH LODGE GRASS MT								
CIMARRON DEFENDER 443B				3	4.6	2.5	66	93	17	50	-2.5	-0.1	-9.9	-0.11	0.47	
207528	3/7/14	FB	11	0.55	0.70	0.66	0.66	0.28			0.30	0.37	0.48	0.32	0.44	
BLK	POLLED		CIMARRON CITATION 118Y				BIEBER CINNAMON 50P									
BOLLENBACH CATTLE COMPANY KINGFISHER OK								MJB RANCH LODGE GRASS MT								
CIMARRON REBEL 738T				1	13.0	0.9	64	97	5	37	6.8	-0.4	-10.9	-0.12	0.50	
192356	2/22/07	PB	131	0.26	0.61	0.53	0.55	0.41			0.24	0.18	0.34	0.14	0.26	
RED	POLLED		MJB ROUNDUP 208R				CIMARRON BELLE 362N									
BOLLENBACH CATTLE COMPANY KINGFISHER OK								BRIKEN FARMS LLC;JEFFERSON CITY MO								
CIMARRON REBEL 941W				4	7.3	2.4	68	100	17	51	8.5	-0.4	-12.1	-0.12	0.46	
198091	2/17/09	PB	112	0.42	0.67	0.61	0.61	0.49			0.41	0.26	0.40	0.22	0.35	
BLK	POLLED		MJB ROUNDUP 208R				CIMARRON PLAYMATE 136L									
BOLLENBACH CATTLE COMPANY KINGFISHER OK								MJB RANCH LODGE GRASS MT; NICHOLS FARMS LTD BRIDGEWATER IA								
CIMARRON SUPERIOR 26I				14	5.0	3.5	65	91	11	44	-3.2	-0.1	-14.6	-0.09	0.27	
119261	3/27/92	FB	249	0.36	0.70	0.64	0.65	0.57			0.39	0.20	0.33	0.17	0.29	
RED	POLLED		CIMARRON RULER 815				CIMARRON EMPRESS 871									
BOLLENBACH CATTLE COMPANY KINGFISHER OK								DLCC RANCH PIERZ MN; OREGON SOUTH DEVON CATTLE CO MONUMENT OR								
CIMARRON SUPERIOR 442				29	8.0	1.6	59	97	16	45	1.2	0.1	-17.4	-0.06	0.08	
125263	3/27/94	FB	1008	0.81	0.89	0.84	0.85	0.80			0.69	0.66	0.71	0.58	0.66	
RED	POLLED		CIMARRON RULER 815				CIMARRON SUNSET 935									
BOLLENBACH CATTLE COMPANY KINGFISHER OK								WAYNE DOHE LINCOLN KS								
CIMARRON TRIUMPH 705T				7	16.7	-3.8	25	40	26	39	3.7	-0.1	-36.0	-0.08	-0.06	
192390	1/29/07	FB	138	0.49	0.74	0.68	0.69	0.53			0.40	0.23	0.44	0.23	0.35	
BLK	POLLED		CIMARRON BARNBURNER 545R				CIMARRON LOLITA 521R									
BOLLENBACH CATTLE COMPANY KINGFISHER OK								MJB RANCH LODGE GRASS MT; ELKINGTON BROS & SONS IDAHO FALLS ID								
CIRCLE S 61X				7	15.3	-3.7	10	5	19	24	4.0	-0.3	-23.9	-0.12	0.20	
110060	3/8/88	FB	115	0.33	0.73	0.67	0.68	0.49			0.36	0.13	0.24	0.07	0.26	
RED	POLLED		LEACHMAN DEVON 828T				LEACHMAN JH S873									
CIRCLE S RANCH COMPANY THREE FORKS MT								WILLIAM L MCCLEEREY MANVILLE WY								
COTEAU BEAVR SUNRISE 510				1	12.4	1.9	50	76	9	34	3.9	-0.2	-7.6	-0.11	0.37	
203370	2/24/12	PB	20	0.28	0.60	0.57	0.57	0.34			0.25	0.01	0.24	0.01	0.18	
RED	POLLED		HHSD BEAVER 1ST				COTEAU SUNRISE 85									
DIAMOND PLUS CATTLE GACKLE ND								DIAMOND PLUS CATTLE GACKLE ND								
DLC BLACKFOOT LAD 226				1	11.6	1.1	64	96	17	49	5.2	-0.2	-3.1	-0.08	0.46	
214210	4/20/18	FB	2	0.28	0.51	0.51	0.48	0.19			0.19	0.12	0.26	0.09	0.21	
BLK	POLLED		MJB BLACKFOOT 546C				DLC MS HUDSON 406									
DAHL LAND & CATTLE CO GACKLE ND								DAHL LAND & CATTLE CO GACKLE ND								
DLC MR BLACKFOOT 300				2	12.0	1.1	53	83	22	48	6	0	6.7	-0.07	0.38	
212830	4/1/17	PB	4	0.55	0.72	0.68	0.66	0.23			0.27	0.38	0.47	0.30	0.41	
BLK	POLLED		MJB BLACKFOOT 546C				DLC LEGEND LASS 423									
DAHL LAND & CATTLE CO GACKLE ND								MJB RANCH LODGE GRASS MT								
DLC MR SHILO 164				1	4.7	4.1	74	108	17	54	-3.9	-0.2	-1.7	-0.09	0.48	
210079	4/23/16	FB	12	0.21	0.56	0.54	0.55	0.24			0.21	0.10	0.30	0.07	0.23	
RED	POLLED		DLC SHILO LAD 1100				DLC MISS HUDSON 112									
DAHL LAND & CATTLE CO GACKLE ND								DAHL LAND & CATTLE CO GACKLE ND								
DLC ROYAL LAD 1139				8	16.8	-0.2	60	94	28	57	8.8	-0.2	-12.3	-0.08	0.21	
200031	5/7/11	FB	144	0.51	0.78	0.71	0.71	0.51			0.43	0.23	0.45	0.20	0.33	
RED	POLLED		DLC BLACK LAD 60W				DLC ROCKETTE 803U									
DAHL LAND & CATTLE CO GACKLE ND								ELKINGTON BROS & SONS IDAHO FALLS ID; MJB RANCH LODGE GRASS MT; DLCC RANCH PIERZ MN;								

2023 SIRE SUMMARY - MAIN LISTING

Name	Reg#	DOB	%	#Herds	CED	BW	WW	YW	Milk	MWW	CEM	Marb	CW	Fat	REA
	Color	H/P/S		#Dcalves	Acc	Acc	Acc	Acc	Acc		Acc	Acc	Acc	Acc	Acc
	Breeder			Sire			Owner(s)								
DLC SHILO LAD 112				1	5.1	4.0	75	113	14	52	-1.3	-0.2	7.7	-0.09	0.37
212810	4/17/17	FB	8	0.23	0.55	0.53	0.53	0.24			0.20	0.07	0.26	0.06	0.19
RED	SCURRED		DLC SHILO LAD 1100				DLC MISS LEGACY 317								
DAHL LAND & CATTLE CO GACKLE ND				DAHL LAND & CATTLE CO GACKLE ND											
DLCC BATTLECRY 27B				9	10.7	1.0	51	70	19	45	5.5	-0.1	-22.5	-0.1	0.30
206340	3/26/14	FB	19	0.26	0.54	0.51	0.51	0.26			0.20	0.17	0.28	0.12	0.22
RED	POLLED		DLCC PATRIOT 51Y				DLCC TOPAZ 20Y								
DLCC RANCH PIERZ MN				CARROLL & CAROLE NELSON BIG TIMBER MT											
DLCC BELMONT 25B				7	8.8	1.2	76	123	16	54	0.2	-0.3	-8.4	-0.09	0.35
206413	3/24/14	FB	27	0.35	0.55	0.50	0.50	0.34			0.27	0.29	0.37	0.24	0.33
BLK	POLLED		DLCC WHIPLASH 1Y				DLCC MANDI 2X								
LEAH GIESS PIERZ MN				MISSOURI COTEAU CATTLE CO CRANE VALLEY SK CANADA											
DLCC CADET 4C				1	9.6	3.0	60	81	10	39	2.5	0	-18.7	-0.08	0.26
208409	2/22/15	PB	8	0.28	0.51	0.5	0.50	0.25			0.20	0.17	0.29	0.14	0.25
RED	POLLED		DLCC ADMIRAL 12A				DLCC MAMMY 46A								
LEAH GIESS PIERZ MN				DIAMOND PLUS CATTLE GACKLE ND											
DLCC CHECKERS 12C				6	10.4	-0.2	55	81	9	37	3.3	0.1	-11.8	-0.08	0.28
208860	3/17/15	FB	20	0.50	0.60	0.58	0.57	0.28			0.26	0.38	0.44	0.32	0.41
RED	POLLED		DLCC ADMIRAL 12A				DLCC POPPY 108Z								
LEAH GIESS PIERZ MN				R P FARMS SWANVILLE MN											
DLCC COPY CAT 69C				7	9.9	0.7	63	99	9	41	2.1	-0.1	-4.4	-0.09	0.21
208807	4/9/15	FB	37	0.39	0.64	0.6	0.61	0.37			0.28	0.29	0.38	0.23	0.33
BLK	POLLED		DLCC DODGE CITY 78Y				DLCC TOPAZ 20Y								
DLCC RANCH PIERZ MN				DLCC RANCH PIERZ MN; LEACHMAN CATTLE OF CO FT COLLINS CO											
DLCC COWBOY JO 81C				13	14.1	-1.9	55	84	7	34	3.1	-0.1	-6.9	-0.05	0.18
208816	4/21/15	FB	20	0.55	0.68	0.64	0.64	0.33			0.29	0.42	0.49	0.34	0.45
RED	POLLED		DLCC DODGE CITY 78Y				DLCC KATARINA 67Z								
DLCC RANCH PIERZ MN				DLCC RANCH PIERZ MN; LEACHMAN CATTLE OF CO FT COLLINS CO											
DLCC CROSSFIRE 67C				1	8.4	2.3	76	111	19	57	2.6	0	10.1	-0.08	0.25
208406	4/9/15	FB	23	0.27	0.59	0.56	0.58	0.33			0.26	0.17	0.32	0.12	0.25
RED	POLLED		DLCC DODGE CITY 78Y				DLCC CLAIRE 50W								
LANE GIESS PIERZ MN				DLCC RANCH PIERZ MN; DAHL LAND & CATTLE CO GACKLE ND											
DLCC DEBUT 88D				3	11.2	-0.1	77	110	4	43	2.2	0.3	-0.2	-0.09	0.12
210912	4/12/16	FB	16	0.52	0.73	0.67	0.66	0.32			0.35	0.41	0.48	0.32	0.41
BLK	POLLED		DLCC DODGE CITY 78Y				DLCC BINDI 71X								
DLCC RANCH PIERZ MN				DLCC RANCH PIERZ MN											
DLCC DERBY 64D				8	5.8	2.7	60	65	5	35	0.7	0	-35.5	-0.08	0.14
210507	4/2/16	FB	18	0.50	0.74	0.66	0.65	0.33			0.31	0.39	0.45	0.29	0.40
RED	POLLED		DLCC DODGE CITY 78Y				DLCC TOPAZ 20Y								
DLCC RANCH PIERZ MN				DON & LINDA HARVEY ARBELA MO; DLCC RANCH PIERZ MN											
DLCC DODGE CITY 78Y				11	10.6	0.4	69	100	1	36	2.4	0.1	-0.4	-0.06	0.13
200720	4/22/11	PB	78	0.52	0.76	0.71	0.72	0.53			0.42	0.43	0.52	0.33	0.44
BLK	POLLED		SBCC WOMANIZER 9137				DLCC PERFECT ENUF 28W								
LANE GIESS PIERZ MN				DLCC RANCH PIERZ MN; LEACHMAN CATTLE OF CO FT COLLINS CO											
DLCC DURANGO 26Z				5	6.9	2.4	63	106	24	55	0.2	-0.1	-7.8	-0.09	0.61
202828	3/30/12	PB	7	0.36	0.60	0.56	0.56	0.31			0.26	0.29	0.38	0.24	0.32
BLK	POLLED		DLCC SHUR LOC 99W				DLCC MANDI 55U								
DLCC RANCH PIERZ MN				WATINGA WILLALOOKA AUSTRALIA; DLCC RANCH PIERZ MN; LEACHMAN CATTLE OF COLORADO WELLINGTON CO; NICHOLS FARMS LTD BRIDGEWATER IA											
DLCC ENERGIZER 87E				1	2.8	2.5	61	84	8	39	-1.4	-0.1	-18.8	-0.07	0.03
213025	4/9/17	FB	8	0.47	0.57	0.53	0.53	0.19			0.23	0.33	0.40	0.27	0.35
RED	POLLED		DLCC MANHATTAN 33Z				DLCC POPPY 108Z								
LEAH GIESS PIERZ MN				KNN FARMS BAY CITY WI; DLCC RANCH PIERZ MN											
DLCC FATE 56F				3	10.6	-0.5	67	100	8	41	1.4	0	-12.1	-0.07	-0.08
214816	3/25/18	PB	2	0.51	0.57	0.53	0.53	0.27			0.27	0.41	0.43	0.34	0.40
RED	POLLED		DLCC DODGE CITY 78Y				DLCC FANCY PANTS 103Y								
DLCC RANCH PIERZ MN				DLCC RANCH PIERZ MN; NINE MILE RANCH WALLA WALLA WA; SCOTCHLANDS FARM ARMSTRONG BC BC;											
DLCC GOLD DUST 64G				4	7.0	3.1	95	140	13	61	2.3	0.3	12.8	-0.08	0.65
216262	3/29/19	FB		0.48	0.68	0.63		0.57	0.19		0.23	0.37	0.42	0.27	0.36
BLK	POLLED		DLCC DEBUT 88D				DLCC LOOP 19B								
DLCC RANCH PIERZ MN				DLCC RANCH PIERZ MN											

2023 SIRE SUMMARY - MAIN LISTING

Name	Reg#	DOB	%	#Herds	CED	BW	WW	YW	Milk	MWW	CEM	Marb	CW	Fat	REA
				#Dcalves	Acc	Acc	Acc	Acc	Acc		Acc	Acc	Acc	Acc	Acc
				Sire			Owner(s)	Dam							
DLCC GOLD MEDAL 104G				2	10.4	-0.1	70	107	18	53	2.5	0	1.7	-0.06	-0.16
216296	4/16/19				0.49	0.57	0.54	0.53	0.18		0.24	0.35	0.43	0.31	0.42
BLK	POLLED			DLCC EVEREST 50E				DLCC CLAIRE 12B							
LANE GIESS PIERZ MN							R P FARMS SWANVILLE MN; DLCC RANCH PIERZ MN								
DLCC GRANDEUR 42G				4	14.5	-1.5	65	105	16	49	4.2	-0.2	-3.7	-0.06	-0.04
216237	3/25/19	FB			0.46	0.56	0.51	0.52	0.19		0.21	0.37	0.41	0.31	0.37
RED	POLLED			DLCC COWBOY JO 81C				DLCC PERFECT 9A							
DLCC RANCH PIERZ MN							DLCC RANCH PIERZ MN; CARROLL & CAROLE NELSON BIG TIMBER MT								
DLCC HOMESTEADER 140H				2	11.8	-1.8	56	82	11	39	1.1	-0.2	-20	-0.07	0.14
217737	5/5/20	FB			0.46	0.51	0.48	0.48	0.21		0.24	0.36	0.41	0.32	0.39
BLK	POLLED			DLCC DEBUT 88D				DLCC BELINDA 14B							
DLCC RANCH PIERZ MN							DLCC RANCH PIERZ MN; 9-R RANCH GOODLAND MN								
DLCC SHUR LOC 99W				27	6.6	2.6	54	83	8	35	-0.4	-0.2	-15.3	-0.11	0.43
196653	4/14/09			186	0.61	0.8	0.76	0.75	0.57		0.44	0.62	0.64	0.52	0.62
BLK	POLLED			MJB SHUR LOC 106S				VPG KEYSHA 047K							
DLCC RANCH PIERZ MN							LEACHMAN CATTLE OF CO FT COLLINS CO; DLCC RANCH PIERZ MN								
DLCC STOCKMAN 39C				5	9.2	0.7	85	128	5	48	5.1	-0.2	11.8	-0.08	0.51
207902	3/27/15	PB		14	0.38	0.59	0.55	0.56	0.29		0.26	0.29	0.37	0.24	0.32
BLK	POLLED			MMM UNTOUCHABLE W810				DLCC PROMISE 40U							
DLCC RANCH PIERZ MN							TERRY HOUSER LEONARDVILLE KS; MISSOURI COTEAU CATTLE CO CRANE VALLEY SK								
							CANADA; JARED MUMM COMMERCE TX; DLCC RANCH PIERZ MN								
DLCC SURE THING 34P				9	7.7	0.4	64	97	16	47	-2.1	0.1	-6.0	-0.06	0.06
181632	4/1/04			120	0.50	0.70	0.64	0.65	0.56		0.45	0.45	0.51	0.38	0.46
BLK	POLLED			DLCC SURE-ENUF				DLCC PERFECT ENUF 4M							
DLCC RANCH PIERZ MN							DLCC RANCH PIERZ MN								
DLCC TWO STEP 84B				13	1.7	4.6	72	106	13	48	-7.0	-0.5	-19.7	-0.12	0.70
205508	5/12/14	PB		50	0.31	0.6	0.58	0.58	0.38		0.24	0.24	0.38	0.21	0.30
RED	POLLED			DLCC SHUR LOC 99W				DLCC DANCER 141T							
LANE GIESS PIERZ MN							DLCC RANCH PIERZ MN								
DLCC WHIPLASH 1Y				21	8.2	-0.4	55	83	13	40	-4.2	-0.3	-23.8	-0.07	-0.23
199722	1/1/11	PB		116	0.50	0.77	0.72	0.70	0.56		0.43	0.6	0.62	0.51	0.60
BLK	POLLED			DLCC SURE THING TOO 119T				DLCC DANCER 141T							
LANE GIESS PIERZ MN							DLCC WHIPLASH SYNDICATE PIERZ MN; DLCC RANCH PIERZ MN								
DPC DALLAS PROGRESS D302				1	4.9	3.3	75	122	15	52	0.5	-0.3	3.4	-0.11	0.60
212318	2/28/16	FB			0.24	0.47	0.45	0.44	0.22		0.19	0.15	0.24	0.14	0.21
RED	POLLED			BC PROGRESS 315U				COTEAU DALLAS SKY A812							
DIAMOND PLUS CATTLE GACKLE ND							DIAMOND PLUS CATTLE GACKLE ND								
EBS ELKER 1121 642A				1	8.6	2.8	58	79	7	36	2.0	-0.2	-24.3	-0.10	0.30
203524	3/3/13	FB		16	0.23	0.53	0.47	0.51	0.25		0.20	0.17	0.31	0.10	0.25
RED	POLLED			DLC LEGACY 1121				EBS IDA 507T							
ELKINGTON BROS & SONS IDAHO FALLS ID							ELKINGTON BROS & SONS IDAHO FALLS ID								
EBS ELKER 523Z				1	15.5	-3.6	39	61	9	29	3.7	-0.1	-24.7	-0.08	0.10
201500	3/21/12	FB		9	0.32	0.59	0.53	0.56	0.28		0.24	0.18	0.30	0.14	0.26
BLK	POLLED			CIMARRON TRIUMPH 705T				EBS MARTHA 975W							
ELKINGTON BROS & SONS IDAHO FALLS ID							ELKINGTON BROS & SONS IDAHO FALLS ID								
GUM HILL RED 530				9	8.8	3.5	57	76	14	43	5.0	-0.4	-11.8	-0.11	0.10
208776	3/17/09	FB		64	0.30	0.59	0.58	0.59	0.38		0.25	0.23	0.34	0.17	0.29
RED	POLLED			GUM HILL B41				GUM HILL Y046							
HHSD BEAVER 1ST				51	14	0.5	48	65	6	30	9.9	-0.4	-6.3	-0.11	0.47
10706	4/22/77	FB		587	0.47	0.78	0.73	0.74	0.69		0.48	0.07	0.31	0.04	0.26
MXD	POLLED			ZORRA CHOLWELLS BEAVER				GATHERLEY JOAN 14TH							
HAGER & HAMPERS SOUTH DEVON SOUTH LYNDENBORO NH							FLYING TRIANGLE PARTNRSP%% NORTH PLATTE NE								
HS E PLURBIS UNUM				16	9.5	0.7	52	75	13	39	-2.5	-0.3	-23.9	-0.10	0.33
190982	1/4/07			27	0.29	0.57	0.45	0.41	0.31		0.27	0.10	0.31	0.06	0.26
RED	SCURRED			DLC ROYAL LAD 21				MJB PRIMA 7506G							
THREE CEDARS FARM DENMARK TN							TENNESSEE RIVER MUSIC INC FT PAYNE AL; JVM CATTLE COMPANY PELLA IA; SHOWBOAT								
							CATTLE CO WINCHESTER KS;								
JVM EASTON 750E				19	7.8	1.0	67	101	12	46	-2.0	-0.3	-20.3	-0.08	0.53
211759	4/28/17	FB		5	0.53	0.62	0.56	0.53	0.15		0.25	0.35	0.41	0.28	0.37
BLK	POLLED			HILL CREST 465B				JVM ZELLA 203Z							
JVM CATTLE COMPANY PELLA IA							JVM CATTLE COMPANY PELLA IA								

2023 SIRE SUMMARY - MAIN LISTING

Name	DOB	%	#Herds	CED	BW	WW	YW	Milk	MWW	CEM	Marb	CW	Fat	REA
Reg#			#Dcalves	Acc	Acc	Acc	Acc	Acc		Acc	Acc	Acc	Acc	Acc
Color	H/P/S		Sire				Dam							
Breeder						Owner(s)								
JVM EDGE 753E			4	6.1	3.0	62	88	18	49	-1.1	-0.4	-2.3	-0.07	0.46
213244	3/12/17	PB	5	0.44	0.51	0.48	0.48	0.18		0.19	0.27	0.38	0.26	0.37
BLK	POLLED		JVM ZEKE 252Z					TLC NAVY 1889B						
JVM CATTLE COMPANY PELLA IA						LANCE A BRANTNER ELLSWORTH WI								
JVM FLYNN 853F			2	12.3	0.5	63	90	28	59	5.5	-0.2	11.1	-0.09	0.65
214382	3/20/18	PB	5	0.49	0.61	0.56	0.56	0.18		0.21	0.34	0.41	0.30	0.38
BLK	POLLED		MJB DILLON 689D					TLC NAVY 2019B						
JVM CATTLE COMPANY PELLA IA						JVM CATTLE COMPANY PELLA IA								
JVM ZEKE 252Z			9	8.6	0.8	49	69	13	37	-1.0	-0.3	-18.2	-0.10	0.46
202601	5/4/12	PB	27	0.32	0.56	0.47	0.43	0.25		0.21	0.11	0.27	0.09	0.25
RED	POLLED		HS E PLURBIS UNUM					MAPLE LEAF IRIS 11N						
JVM CATTLE COMPANY PELLA IA						JVM CATTLE COMPANY PELLA IA								
KNN ALL-IN 1H			1	10.4	-1.4	53	77	17	43	2.1	-0.3	-28.1	-0.11	0.45
217434	2/12/20	FB		0.46	0.54	0.46	0.45	0.11		0.21	0.30	0.36	0.28	0.34
BLK	POLLED		JVM EASTON 750E					KNN KEA 2F						
KNN FARMS BAY CITY WI						KNN FARMS BAY CITY WI; DLCC RANCH PIERZ MN								
KNN KENO 28S			8	11.0	3.3	49	73	19	44	4.5	-0.2	-15.0	-0.11	0.30
188557	5/15/06	PB	31	0.24	0.56	0.48	0.45	0.30		0.20	0.10	0.20	0.08	0.18
RED	POLLED		RSC GLACIER 108					DLCC KEYSHA 15IN						
KNN FARMS BAY CITY WI						KNN FARMS BAY CITY WI								
KNN MARSHALL 8G			2	11.1	2.0	47	65	13	36	3.7	-0.5	-1.3	-0.11	0.65
215372	3/18/19	FB		0.45	0.51	0.48	0.47	0.18		0.23	0.33	0.42	0.29	0.36
RED	POLLED		KNN MIDWEST 20D					KNN KIZA 3Z						
KNN FARMS BAY CITY WI						KNN FARMS BAY CITY WI								
KNN RANGER 37T			8	11.0	-1.9	39	54	14	34	7.5	-0.2	-17.2	-0.09	0.17
193165	5/17/07	PB	117	0.39	0.68	0.64	0.60	0.43		0.30	0.13	0.35	0.08	0.32
BLK	POLLED		DLCC OPEN RANGE 3R					KNN RUBEE DANCER 25R						
KNN FARMS BAY CITY WI						KNN FARMS BAY CITY WI								
L-7 461Z			11	4.6	6.4	67	95	12	45	-4.7	-0.1	-21.9	-0.11	0.25
113890	4/5/90	FB	465	0.39	0.79	0.72	0.73	0.65		0.52	0.28	0.47	0.18	0.34
RED	HORNED		PMS MR UNIVERSE 137U					PMS MISS IDAHO GEM 104U						
PAUL M SIEVERT RIVER FOREST IL						MJB RANCH LODGE GRASS MT; LEO MCDONNELL JR COLUMBUS MT								
MD EFFORTLESS 2E			9	11.6	-1.1	51	73	9	35	1.8	-0.2	-20.2	-0.07	0.14
216095	3/27/17	FB	3	0.39	0.56	0.49	0.47	0.18		0.20	0.19	0.29	0.14	0.25
RED	POLLED		DLCC COWBOY JO 81C					KNN STRAWBERRY 38C						
MARVIN AND DENISE MUMM KIMBERLY ID						MARVIN AND DENISE MUMM KIMBERLY ID; DLCC RANCH PIERZ MN; LONN CAMPBELL MCINTOSH SD;								
MJB BLACK OUT 476B			2	7.5	-0.4	72	113	15	51	0.8	-0.1	13.4	-0.09	0.44
205655	3/19/14	FB	8	0.29	0.64	0.58	0.57	0.28		0.27	0.22	0.34	0.17	0.28
BLK	POLLED		MMM UNTOUCHABLE W810					MJB NIKKI 8613U						
MJB RANCH LODGE GRASS MT						MJB RANCH LODGE GRASS MT								
MJB BLACKFOOT 546C			3	13.5	-1.0	67	105	23	56	9.3	-0.1	10.0	-0.08	0.43
208539	3/3/15	PB	33	0.56	0.68	0.65	0.65	0.37		0.33	0.42	0.47	0.34	0.42
BLK	POLLED		MMM UNTOUCHABLE W810					MJB JULIET 0536X						
MJB RANCH LODGE GRASS MT						DAHL LAND & CATTLE CO GACKLE ND								
MJB COOL 548C			2	8.7	-0.2	61	92	18	49	0.8	-0.3	-2.8	-0.10	0.60
208541	3/4/15	FB	3	0.35	0.62	0.57	0.57	0.27		0.26	0.25	0.36	0.19	0.31
BLK	POLLED		MJB SWAGGER 330Z					MJB NIKKI 8613U						
MJB RANCH LODGE GRASS MT						MISSOURI COTEAU CATTLE CO CRANE VALLEY SK CANADA								
MJB DILLON 689D			9	9.3	2.5	75	117	25	62	4.9	-0.1	12.9	-0.09	0.68
209901	3/7/16	FB	10	0.53	0.63	0.58	0.56	0.27		0.28	0.36	0.42	0.32	0.43
BLK	POLLED		MJB SWAGGER 330Z					MJB YURI 1666Y						
MJB RANCH LODGE GRASS MT						WALNUT GROVE FARM VALLEY FALLS KS; MJB RANCH LODGE GRASS MT; JVM CATTLE COMPANY PELLA IA;								
MJB EXTRA 771E			2	5.0	0.7	65	106	10	43	0.8	-0.3	5.7	-0.12	0.80
212167	3/10/17	FB	12	0.36	0.69	0.65	0.62	0.32		0.30	0.31	0.40	0.27	0.37
BLK	POLLED		MJB COUNTRY COOL 535C					MJB NIKKI 8613U						
MJB RANCH LODGE GRASS MT						MJB RANCH LODGE GRASS MT								
MJB PROGRESS 892F			1	6.8	1.2	80	132	22	62	2.4	0	10.1	-0.08	0.24
213833	3/22/18	PB		0.48	0.54	0.52	0.53	0.24		0.28	0.42	0.44	0.38	0.43
BLK	POLLED		BC PROGRESS 315U					MJB PERFECT 0582X						
MJB RANCH LODGE GRASS MT						MJB RANCH LODGE GRASS MT								

2023 SIRE SUMMARY - MAIN LISTING

Name	DOB	%	#Herds	CED	BW	WW	YW	Milk	MWW	CEM	Marb	CW	Fat	REA
Reg#			#Dcalves	Acc	Acc	Acc	Acc	Acc		Acc	Acc	Acc	Acc	Acc
Color	H/P/S		Sire				Dam							
Breeder						Owner(s)								
MJB SHUR LOC 106S			13	7.8	1.5	52	78	15	41	2.5	-0.1	-30.0	-0.10	0.47
188977	1/24/06	FB	140	0.46	0.74	0.70	0.71	0.54		0.41	0.33	0.44	0.28	0.38
RED	POLLED		DLCC SURE-ENUF					MJB PROMISE 4550P						
MJB RANCH LODGE GRASS MT								MJB RANCH LODGE GRASS MT; DLCC RANCH PIERZ MN						
MMM UNTOUCHABLE W810			22	11.4	-0.1	72	105	19	55	7.2	-0.3	3.7	-0.09	0.62
199405	8/27/09	PB	338	0.66	0.83	0.79	0.79	0.65		0.54	0.56	0.60	0.48	0.55
BLK	POLLED		DLCC ASTOUND 48S					BRANDY CREEK 68J						
TRIPLE M INCORPORATED CLINTON NC								MJB RANCH LODGE GRASS MT; TRIPLE M INCORPORATED CLINTON NC						
NFL BLACK JACK DSD051			1	11.4	1.3	70	111	21	56	4.8	-0.2	-5.0	-0.13	0.72
210781	3/30/16	FB	11	0.58	0.73	0.68	0.66	0.32		0.31	0.59	0.60	0.50	0.58
BLK	POLLED		MJB BLACK JACK 424B					NFL CHELSEA DSB013						
NICHOLS FARMS LTD BRIDGEWATER IA								NICHOLS FARMS LTD BRIDGEWATER IA						
NFL PROGRESS DSB014			3	7.5	1.8	86	135	2	45	6.8	-0.4	20.1	-0.10	0.48
206246	3/28/14	PB	34	0.62	0.8	0.75	0.73	0.43		0.37	0.64	0.63	0.56	0.61
BLK	POLLED		BC PROGRESS 315U					NICHOLS BEVERLY						
NICHOLS FARMS LTD BRIDGEWATER IA								NICHOLS FARMS LTD BRIDGEWATER IA						
NFL UNTOUCHABLE DSC042			1	10.6	0.7	75	117	18	56	6.5	0.1	11.9	-0.08	0.32
208337	3/21/15	FB	8	0.45	0.62	0.58	0.57	0.26		0.27	0.24	0.40	0.17	0.34
BLK	POLLED		MMM UNTOUCHABLE W810					NICHOLS PERFECTION Z909						
NICHOLS FARMS LTD BRIDGEWATER IA								NICHOLS FARMS LTD BRIDGEWATER IA						
NICHOLS UNTOUCHABLE DSH019			1	8.7	2.0	98	144	19	68	5.1	0	7.2	-0.08	0.59
217475	3/18/20	PB		0.42	0.55	0.49	0.48	0.15		0.20	0.13	0.38	0.10	0.34
BLK	POLLED		NFL UNTOUCHABLE DSC042					NFL PERFECTION DSC069						
NICHOLS FARMS LTD BRIDGEWATER IA								NICHOLS FARMS LTD BRIDGEWATER IA						
SCC MELBOURNE ID			2	6.3	5.1	71	102	11	47	3.8	-0.4	-11.2	-0.11	0.27
209763	3/14/16	FB	14	0.25	0.51	0.49	0.46	0.25		0.19	0.10	0.29	0.07	0.24
RED	POLLED		GUM HILL RED 530					SCC MISS DIXIE 4A						
SADLER CATTLE COMPANY ANOKA MN								SADLER CATTLE COMPANY ANOKA MN; R P FARMS SWANVILLE MN; DLCC RANCH PIERZ MN;						
TC BUCKAROO 412B			1	13.1	1.4	69	104	-16	19	5.8	-0.7	-20.5	-0.13	0.84
206540	2/3/14	FB	59	0.45	0.65	0.60	0.60	0.36		0.27	0.41	0.49	0.36	0.46
RED	POLLED		CIMARRON BONANZA 174L					TC WENDY						
TRIPLE CROWN SOUTH DEVON FARM RUSSELLVILLE MO								TRIPLE CROWN SOUTH DEVON FARM RUSSELLVILLE MO						
TC CASSANOVA 517C			1	17.9	-4.2	49	67	21	45	6.2	-0.3	-20.1	-0.07	0.39
208380	2/13/15	FB	14	0.42	0.68	0.62	0.59	0.31		0.28	0.36	0.44	0.29	0.40
RED	POLLED		CIMARRON FOREMOST 320A					TC UDDERLY PERFECT						
TRIPLE CROWN SOUTH DEVON FARM RUSSELLVILLE MO								TRIPLE CROWN SOUTH DEVON FARM RUSSELLVILLE MO						
TC DESIGN 671D			1	18.3	0.3	63	98	8	40	7.7	-0.7	-8.2	-0.12	0.71
210646	4/5/16	FB		0.47	0.53	0.46	0.45	0.16		0.20	0.33	0.41	0.29	0.35
RED	POLLED		TC BUCKAROO 412B					TC ANN						
TRIPLE CROWN SOUTH DEVON FARM RUSSELLVILLE MO								RANDY SEIDEL LOHMAN MO						
TC DOMINO 662D			1	15.7	-1.6	58	81	18	47	4.9	-0.2	-22.6	-0.08	0.37
210638	3/16/16	FB		0.46	0.56	0.46	0.46	0.19		0.21	0.33	0.39	0.27	0.35
RED	POLLED		CIMARRON FOREMOST 320A					TC ZONE						
TRIPLE CROWN SOUTH DEVON FARM RUSSELLVILLE MO								HF SEIDEL LOHMAN MO						
TC FABIO 823F			1	8.1	4.2	76	117	-3	36	2.9	-0.4	-10.9	-0.11	0.76
214139	2/6/18	FB	2	0.24	0.58	0.53	0.47	0.21		0.19	0.16	0.31	0.12	0.28
RED	POLLED		TC BUCKAROO 412B					TC UPPER CRUST						
TRIPLE CROWN SOUTH DEVON FARM RUSSELLVILLE MO								TRIPLE CROWN SOUTH DEVON FARM RUSSELLVILLE MO						
TLC GENERAL PATTON			4	10.9	-0.8	53	81	16	43	1.8	0	-7.6	-0.05	0.12
209702	5/5/15	FB		0.43	0.49	0.45	0.46	0.16		0.21	0.33	0.38	0.28	0.36
BLK	POLLED		DLCC ADMIRAL 12A					TLC DAISY DUKE 3802						
THOMPSON LAND & CATTLE CO. MOTLEY MN								THOMPSON LAND & CATTLE CO. MOTLEY MN						
TLC NEWT 945W			2	8.9	1.0	60	89	24	54	1.8	-0.1	0	-0.08	0.29
201772	5/17/09	PB	38	0.26	0.56	0.48	0.47	0.32		0.22	0.12	0.24	0.09	0.20
BLK	POLLED		TLC AUGUSTUS 22					TLC TANDI 645S						
THOMPSON LAND & CATTLE CO. MOTLEY MN								THOMPSON LAND & CATTLE CO. MOTLEY MN						
X-E DEPUTY D908			5	10.0	1.7	64	92	13	45	2.4	-0.4	-15.6	-0.09	0.40
211556	2/7/16	FB	16	0.51	0.65	0.61	0.62	0.25		0.26	0.41	0.45	0.30	0.40
RED	POLLED		GUM HILL RED 530					X-E MISS LEO W908						
X-E STOCK RANCH MOSES LAKE WA								DLCC RANCH PIERZ MN						

2023 SIRE SUMMARY - GENETIC INDICATOR LISTING

Name	DOB	%	#Herds	CED	BW	WW	YW	Milk	MWW	CEM	Marb	CW	Fat	REA
Reg#	H/P/S		#Dcalves	Acc	Acc	Acc	Acc	Acc		Acc	Acc	Acc	Acc	Acc
Color			Sire				Dam							
Breeder						Owner(s)								
BC GARTH IIG			2	6.7	2.2	77	129	13	51	0.3	-0.2	13.5	-0.10	0.73
216999	10/1/19	FB		0.43	0.49	0.44	0.44	0.15		0.21	0.34	0.37	0.28	0.34
BLK	POLLED		MJB EXTRA 77IE				BC AMELIA 6645D							
BIG COUNTRY BEEF GENETICS LODGE GRASS MT							BIG COUNTRY BEEF GENETICS LODGE GRASS MT							
BGC F30E			1	9.3	4.6	61	89	15	45	3.5	-0.3	-24.8	-0.09	0.45
212552	3/20/17	FB		0.41	0.46	0.41	0.42	0.16		0.19	0.28	0.35	0.26	0.33
BLK	HORNED		BGC FI6W				BGC F9Y							
BILLIE G CULP NEOSHO MO							BILLIE G CULP NEOSHO MO							
BGC P70E			1	8.6	0	51	69	19	45	4.9	-0.2	-6.1	-0.07	0.42
213476	10/5/17	PB		0.42	0.48	0.44	0.43	0.17		0.21	0.28	0.35	0.25	0.34
BLK	POLLED		KNN RANGER 37T				BGC S33B							
BILLIE G CULP NEOSHO MO							BILLIE G CULP NEOSHO MO							
DLC BLACKFOOT 232G			1	12.5	-0.8	46	73	26	49	7.4	-0.2	-12.6	-0.10	0.19
216451	4/8/19	FB		0.23	0.42	0.41	0.40	0.14		0.16	0.05	0.21	0.04	0.15
BLK	POLLED		DLC BLACK FOOT 307				DLC MS ROMEO 745							
DAHL LAND & CATTLE CO GACKLE ND							DAHL LAND & CATTLE CO GACKLE ND							
DLC MR BLACKFOOT 779			1	9.0	1.4	71	108	21	56	3.2	-0.2	0.8	-0.08	0.55
212837	5/3/17	PB	7	0.23	0.43	0.44	0.45	0.21		0.19	0.12	0.25	0.09	0.18
BLK	POLLED		MJB BLACKFOOT 546C				DLC MS HUDSON 439							
DAHL LAND & CATTLE CO GACKLE ND							REED ZIMMERMAN NAPOLEON ND							
DLCC FURY 46F			1	13.5	-0.2	52	77	13	39	4.9	-0.2	-13.0	-0.08	0.22
214811	3/18/18	FB	1	0.23	0.42	0.35	0.37	0.20		0.16	0.17	0.25	0.11	0.21
BLK	POLLED		DLCC COPY CAT 69C				DLCC KATARINA 67Z							
DLCC RANCH PIERZ MN							HIDDEN PARADISE RANCH EAU CLAIRE WI							
DLCC HOO DOO 26H			2	13.6	-1.9	53	81	13	39	4.3	-0.3	-25.4	-0.08	0.10
217633	3/16/20	FB		0.42	0.49	0.43	0.45	0.14		0.19	0.34	0.37	0.28	0.36
RED	POLLED		MD EFFORTLESS 2E				DLCC PUNCH IIF							
DLCC RANCH PIERZ MN							DLCC RANCH PIERZ MN							
DLCC MR BRIGHTSIDE 92E			1	5.9	2.4	65	101	7	40	-2.9	0	0	-0.08	0.30
213112	4/11/17	FB		0.23	0.37	0.35	0.36	0.20		0.18	0.17	0.24	0.13	0.22
BLK	POLLED		DLCC DODGE CITY 78Y				DLCC RIBBONS 69A							
LANE GIESS PIERZ MN							KYLE STRANBERG MAYNARD MN; DLCC RANCH PIERZ MN							
DLCC STOCKMAN 13E			1	8.5	0.2	73	106	13	50	2.5	-0.2	-8.9	-0.07	0.51
213079	3/6/17	FB		0.22	0.42	0.37	0.39	0.21		0.17	0.18	0.26	0.14	0.23
BLK	POLLED		DLCC STOCKMAN 39C				DLCC TEA CUP 113U							
DLCC RANCH PIERZ MN							MISSOURI COTEAU CATTLE CO CRANE VALLEY SK CANADA; DLCC RANCH PIERZ MN							
EBS ELKER MACHINE 419E			1	8.8	2.6	68	104	17	51	2.5	-0.2	-11.0	-0.1	0.35
214269	3/7/17	FB		0.23	0.51	0.43	0.45	0.16		0.17	0.17	0.28	0.12	0.28
RED	POLLED		EBS ELKER 1121 642A				EBS MISS ELKER 1121 880B							
ELKINGTON BROS & SONS IDAHO FALLS ID							ELKINGTON BROS & SONS IDAHO FALLS ID							
FC RENEGADE 5G			4	9.3	1.1	56	67	9	36	1.5	-0.4	-32.0	-0.13	0.26
215376	4/19/19	FB		0.43	0.48	0.41	0.40	0.14		0.18	0.25	0.34	0.22	0.33
RED	POLLED		KNN RENO 20E				KNN 33B							
ABE AND RENEE FICK MAIDEN ROCK WI							VALLEY HILL FARM ELLSWORTH WI; DLCC RANCH PIERZ MN							
KNN FINAL DRAFT 2H			3	13.7	-2.1	58	83	16	45	3.9	-0.3	-19.0	-0.08	0.45
217435	2/14/20	FB		0.41	0.47	0.43	0.43	0.10		0.19	0.30	0.35	0.26	0.34
RED	POLLED		JVM EASTON 750E				KNN IEKA 3F							
KNN FARMS BAY CITY WI							KNN FARMS BAY CITY WI							
KNN RENO 20E			2	10.7	0.3	47	54	8	32	4.5	-0.2	-21.1	-0.10	0.25
212365	4/16/17	PB	2	0.24	0.43	0.39	0.39	0.18		0.16	0.02	0.19	0.02	0.17
RED	POLLED		KNN RIO GRAND 25B				KNN CHERRY BOMB 8A							
KNN FARMS BAY CITY WI							KNN FARMS BAY CITY WI							
KNN WALKER 5G			1	8.3	1.5	66	104	18	51	3.6	-0.2	-4.0	-0.09	0.26
215373	2/25/19			0.42	0.48	0.44	0.43	0.19		0.23	0.32	0.36	0.29	0.34
BLK	POLLED		MMM UNTOUCHABLE W810				KNN FEBE IE							
KNN FARMS BAY CITY WI							KNN FARMS BAY CITY WI							
MJB ELITE 759E			1	7.5	2.4	76	120	17	55	1.2	-0.3	-1.7	-0.10	0.50
211945	3/5/17	PB		0.23	0.40	0.35	0.37	0.21		0.19	0.13	0.21	0.11	0.18
RED	POLLED		CIMARRON AVENGER 135Y				MJB SHEALAN 2534Z							
MJB RANCH LODGE GRASS MT							DLCC RANCH PIERZ MN; MJB RANCH LODGE GRASS MT; MISSOURI COTEAU CATTLE CO CRANE VALLEY SK CANADA;							

2023 SIRE SUMMARY - GENETIC INDICATOR LISTING

Name	Reg#	DOB	%	#Herds	CED	BW	WW	YW	Milk	MWW	CEM	Marb	CW	Fat	REA
	Color	H/P/S		#Dcalves	Acc	Acc	Acc	Acc	Acc		Acc	Acc	Acc	Acc	Acc
	Breeder			Sire			Owner(s)								
MJB EUREKA 791E				1	8.0	3.1	72	107	22	58	-0.1	-0.3	-11.8	-0.10	0.59
211970	3/19/17	FB			0.13	0.43	0.37	0.37	0.17		0.13	0.09	0.21	0.07	0.15
RED	POLLED			DLCC MT DUNDEE 9Y				MJB YAHOO 1543Y							
MJB RANCH LODGE GRASS MT								DIAMOND PLUS CATTLE GACKLE ND; MJB RANCH LODGE GRASS MT							
NICHOLS BLACK JAC DSH024				1	9.3	2.6	80	122	29	69	4.4	-0.3	-7.3	-0.11	0.81
217505	3/21/20	FB			0.24	0.47	0.40	0.39	0.19		0.16	0.18	0.26	0.15	0.23
BLK	POLLED			NFL BLACK JACK DSD051				MMM LADY B802							
NICHOLS FARMS LTD BRIDGEWATER IA								DLCC RANCH PIERZ MN							
NICHOLS DS DSG050				1	10.0	2.6	60	91	33	63	6.1	-0.3	-18.0	-0.10	0.12
215517	4/20/19	FB			0.41	0.47	0.44	0.46	0.18		0.21	0.32	0.38	0.29	0.35
BLK	POLLED			NICHOLS DS A406				NICHOLS PERFECTION Z915							
NICHOLS FARMS LTD BRIDGEWATER IA								NICHOLS FARMS LTD BRIDGEWATER IA							
RP HONDO 51H				2	12.2	-0.7	63	94	14	46	2.5	0	-0.6	-0.06	0.28
217261	3/5/20				0.23	0.35	0.36	0.33	0.14		0.14	0.14	0.21	0.12	0.18
RED	POLLED			DLCC COWBOY JO 81C				RP FLINT 02F							
R P FARMS SWANVILLE MN								R P FARMS SWANVILLE MN							
TC EXCALIBUR 710E				1	9.4	0.9	65	90	12	44	0.1	-0.3	-12.3	-0.10	0.40
212417	1/27/17	FB			0.19	0.47	0.42	0.40	0.22		0.18	0.12	0.23	0.08	0.17
RED	POLLED			CIMARRON AVENGER 135Y				TC YEARN							
TRIPLE CROWN SOUTH DEVON FARM RUSSELLVILLE MO								MEYER FARMS COLE CAMP MO							
TC GUNSLINGER 922G				1	11.1	1.8	78	113	1	40	4.3	-0.5	-10.9	-0.12	0.69
215822	2/5/19	FB			0.24	0.45	0.41	0.40	0.20		0.16	0.16	0.25	0.14	0.21
BLK	POLLED			TC BUCKAROO 412B				TC SUSIE Q							
TRIPLE CROWN SOUTH DEVON FARM RUSSELLVILLE MO								TRIPLE CROWN SOUTH DEVON FARM RUSSELLVILLE MO							
TC HE-MAN 11H				1	6.8	4.3	80	119	9	49	0.3	-0.4	-4.8	-0.10	0.62
217009	1/26/20	FB			0.17	0.45	0.38	0.32	0.18		0.15	0.07	0.19	0.05	0.16
RED	POLLED			TC FABIO 823F				TC DREAMY 661D							
TRIPLE CROWN SOUTH DEVON FARM RUSSELLVILLE MO								TRIPLE CROWN SOUTH DEVON FARM RUSSELLVILLE MO; TIM KAUFFMAN LOHMAN MO							



2023 NASDA COMMERCIAL PRODUCER OF THE YEAR

The Koebke Family

Jim & Krisanne Koebke

33 Koebke Rd., Dudley, MA 01571

Jim cell 508.245.7984

Kris cell 508.245.8826

***Raised & Grazed
Right Here!***

KNN FARMS

Kurt & Nettie Nelson

*A special thanks to everyone
who supported our
SALE IN THE HARTLAND
this past Fall*

2 Poundmaker Bulls on test ~ UW-River Falls, WI.
Sale Date: April 15 2023.
View videos at www.scvbt.com

Females and bulls available private treaty

651-246-8774 (K) W5137 290TH AVE
651-246-8252 (N) BAY CITY, WI. 54723
knnfarmswi@gmail.com

The Next Generation

The Next Level of Genetics

The Future of KNN Farms

Northern States

SOUTH DEVON ASSOCIATION



Congratulations Brady Mitchell, Detroit Lakes, MN, 2022 Winner of the MYBEP South Devon Heifer. Provided by Sadler Cattle Company, Anoka, MN & donated by Northern States members.

The NSSDA welcomes all South Devon and cattle enthusiasts. The NSSDA is passionate about the breed and diligently works on junior involvement, connecting seedstock producers with commercial cattlemen and promoting the breed as a viable outcross.

FOR MORE INFORMATION CONTACT:

Jim Sadler, President
(612) 581-8706
jwbulldog2@gmail.com

Nettie Nelson, Secretary
(715) 594-3805
knnfarmswi@gmail.com

JOIN US IN 2023

St. Croix Valley Bull Test
River Falls, WI – April 15

DLCC Ranch Bull Sale
Pierz, MN – April 15

NASDJA Junior National
Mount Airy, IA – June 28-July 2

Minnesota State Fair
St. Paul, MN – August 24

NSSDA Field Day
TBD – September 9

MN Beef Expo
St. Paul, MN – October 19-22

The Backbone of Our Future

South Devon Juniors

ADVOCATES FOR THE BREED



2023 – Dallas Hill, donated by 9 Mile Ranch, Kristin Dykes, Walla Walla, WA in memory of Josh Dykes



2022 – Connor Porath, donated by KNN Farms, Bay City, WI



2020 - Shelby Krebs, donated by Gnech Farms, Malin, OR



2019 - Levi Kramer, donated by Thompson Land & Cattle, Motley, MN



2018 - Adree Stapp, donated by DLCC Ranch, Pierz, MN & Scotchlands Farm, Armstrong, BC



2017 - Nicole Kibler, donated Bar E Cattle, Clinton, NC



2016 - Wyatt Lawrence, donated by DLCC Ranch, Pierz, MN



2015 - Saavy Weimer, donated by Dahl Land & Cattle Company, Gackle, ND



2014 - Katelyn Horner, donated by JVM Cattle Company, Pella, IA



2013 - Jacob Allen, donated by MJB Ranch, Lodgegrass, MT

APPLICATIONS DUE NOV. 8, 2023

**Heifer will be presented at the
2024 NWSS, Denver, CO**

*2024 heifer is being donated by C/N Ranch,
Carroll & Carole Nelson, Big Timber, MT*

WWW.SOUTHDEVON.COM

2024 NASDA

Steer Profitability

COMPETITION

REQUIREMENTS

- Steers only
- Entrant must be a NASDA member
- Animals must be entered in the NASDA database
- Either sire or dam on file in the NASDA database
- Birthdate range: 1/15/23-4/15/23
- Weaning date range: 8/15/23-10/15/23
- Castration must occur prior to weaning
- Steers must weigh 500-750 lbs. at delivery
- Steers must be polled or dehorned
- Any breed composition welcome

CONTEST GUIDELINES

- Entry of \$65/head
- Feedlot placement approximately November 1
- All decisions at the discretion of the feedlot
- Harvest will occur approximately May 2024
- Entrant will receive reports on monthly feed and health
- Reports provided on final feedyard data and final carcass performance data

DETAILS

- All steers on GrowSafe feed intake system throughout the entire project
- Individual intake and gain information on all steers
- Monthly weights on all steers
- Steers will be fed at the University of Missouri Beef Research & Testing Farm in Columbia, MO
- Monthly bill detailing specific expenses on each steer

Register by October 15, 2023

WWW.SOUTHDEVON.COM

Or call 320-249-2130 for more information





“South Devon cattle have a lot to offer to the commercial cattleman in terms of practical, problem-free cattle that will work for them, not the other way around.”

Steve Williams

Midland Bull Test, Columbus, Montana



The Profitable English Outcross

“South Devon cattle are trait leaders for Residual Feed Intake (RFI) and feed efficiency, not only at the Midland Bull Test, but around the country.” The first South Devon were tested at his family’s bull test facility in the 1970’s. “I appreciate the South Devon breed for their outstanding conformation, growth, performance and feed efficiency.”

Leo McDonnell Jr.

Midland Bull Test, Columbus, Montana



IGS Multi-breed
Genetic Evaluation

PO Box 850 | Big Horn, WY 82833
303-770-3130 | info@southdevon.com

www.southdevon.com

UNCOVER THE OUTCROSS PROFIT-POTENTIAL

DLCC GOLD DUST 64G



NASDA # 216262 | Sire: DLCC Debut 88D (210912) | Dam: DLCC Loop 19B (206364)

CED: 7 WW: 96 YW: 140 ADG: 0.28 Milk: 13.1 Stay: 21 CW: 13 Marb: 0.33 BF -0.08 REA: 0.7 | API: 159 TI: 99

Purebred South Devon | Homozygous Polled | Homozygous Black | DOB: 3/29/2019

Genetics Matter. Use an Outcross.

Gold Dust is the culmination of our generations of selection for exceptional performance, balanced genetic merit and outstanding eye-appeal. We believe that it is possible to make attractive cattle that are great numbered - Gold Dust is our proof. With thousands of units of semen sold, and hundreds of progeny registered, we are confident this bull is not only a breed changer, but one that moves the needle in an industry hungry for crossbreeding solutions.

HIS SONS SELL

Join us on **April 15th** for the DLCC Ranch 31st Annual Production Sale. Selling 80 bulls and 60 females.

Visit the website for more information.

To order semen visit

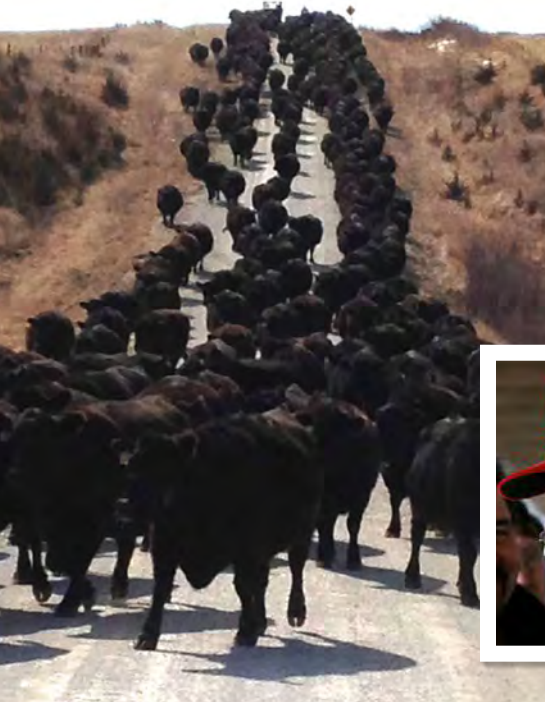
www.DLCCRANCH.com

Dar Giess: (320)-249-2130 | Lane Giess: (320)-293-1647 | Wyatt Lawrence: (763)-242-2804

Nichols Farms

Superior Beef Genetics

**HEADED IN THE
RIGHT DIRECTION
WITH SOUTH DEVON**



The commercial market-place has responded!

Real world cow/calf operations have found that Nichols South Devon genetics have delivered as promised and they are putting their money on them. It's because they have added heterosis, fertility, increased weaning weights and top prices at sale barns. Feedlots have realized feed efficiency,

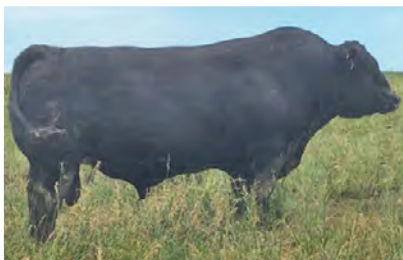
rate of gain and bottom-line profits. Those who are selling locker beef have gained new customers because of good-tasting, tender beef. We have and will continue to live up to our name to provide and deliver Superior South Devon Beef Genetics that add value from Conception to Consumer.



DAVE NICHOLS

Join us in January for our Private Treaty Bull Sale.

Bulls and females for sale throughout the year.



Nichols Majestic Y808



NFL Untouchable 042
Co-owned with Neil Hagger,
South Australia



**Nichols Black
Perfection X835**

www.nicholsfarms.biz



FOLLOW US ON FACEBOOK